

# 2026 Spring In-House RV Show

**PREMIER**   
LLC

Thurs-Sat 9am-6pm  
March 5th - 7th

2025 Final  
Closeouts

Over 50  
RVs Inside  
& heated!

New RVs  
Starting at  
\*\$124/  
month



BRINKLEY

SALEM

inTech

SUNSET PARK RV  
MANUFACTURING

**OUR LARGEST  
SELECTION  
EVER!**



VENTURE

Open Range

K2  
RECREATIONAL  
VEHICLES

KEYSTONE  
RV COMPANY

**RVing is not just for summer - Take advantage of our large volume discounts!**

FREE  
ADMISSION

Over 230 RVs in  
stock!



No payments  
until spring!

SHOW  
SPECIAL!

**\$19,991**



2026 Open Range  
Colt 26DBS

RV BUSINESS

**TOP 50**

DEALER AWARDS

## WHAT CUSTOMERS WANT AND DESERVE

- Premier RV Named RVDA Top 50 Dealers in the Nation 2 years in a row!
  - Iowa's ONLY 2025 Top 50 Dealer!
- Quality Brands at Volume Discounted Prices
- No Pressure, Transparent Sales Process
- Family Owned with Over 400 Years of RV Experience

**NO HIDDEN FEES**

563-424-7788

746 Industrial Drive, Blue Grass, Iowa 52726

 [www.premierrv.com](http://www.premierrv.com)

Check out our Facebook page!

[facebook.com/premierrviowa](https://facebook.com/premierrviowa)

Not responsible for printing errors

# RVDA Top 50 Dealership in North America Press Release

[Blue Grass, IA] – Local business Premier RV was recently recognized as a 2024 & 2025 RVBusiness Magazine Top 50 RV Dealers of North America before hundreds of colleagues, friends and family at a gala awards ceremony held in conjunction with the RV Dealers Association Convention/Expo in Las Vegas.

Brad and Brandy Thompson were thrilled to receive this award on behalf of their team in only their fourth year back in the RV business after owning and operating Thompson Family RV from 1957 to 2017 with their family partners Darlene (Jim) Thompson, Mark (Dawn) Thompson, Tim (Brenda) Thompson, Jill (Larry) Tappendorf and Ann (Paul) Thordyke. Jason Rettler, VP of Service and Kayla Taylor, comptroller, Payton Thompson, finance manager, Natalie Moore, administrative assistant, also represented Premier RV leadership team in Vegas.

Now in its 14th year, RVB's Top 50 program is designed to recognize the very best RV dealerships in the United States and Canada. This season's run began earlier this year when RV manufacturers nominated elite dealer partners for consideration, who were then invited to complete comprehensive application materials. An anonymous, independent panel of judges, all with decades of experience in the RV industry, then convened for two days of review and selection to arrive at the Top 50 and its special awardees.

"It's amazing to be recognized as part of one of the best teams in the country," Brad Thompson stated. It's no wonder why Premier RV separates itself from the over 3000 RV Dealers in the country with its over 400 years of combined RV experience, transparent, no fee pricing structure, A+ BBB rating, and 4.9 Google reviews.

Program Administrator BJ Thompson explained that judges evaluate dealers on sound business practices, marketing savvy, proactive employee development, community involvement and commitment to high-quality customer care.

"Throughout the RV industry's evolution, the one constant is the need to take care of people – the RVers themselves, as well as their staff and their neighbors," said Thompson. "Holding up these awardees as examples each year illustrates all the good things happening in our industry and inspires others to do more of the same. Everyone wins." Premier RV is proud to carry on the legacy of the Thompson Family and its team. With this award Premier RV and Thompson Family RV have won this award a total of 5 times out of the last fourteen years even with a 5-year hiatus out of the industry.



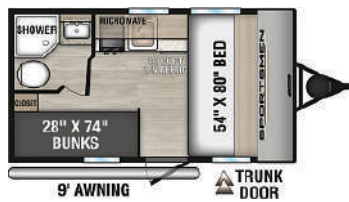
## 2025 Closeouts



2025 Sunset Park Sun  
Lite LTD 13MJ  
#2245

**\$12,491**

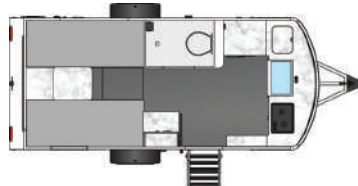
Super Value  
\*\*\$129  
per month



2025 Sportsmen  
Classic 130BH  
#2480, #2481

**\$11,991**

Super Value  
\*\*\$124  
per month



2025 InTech Sol  
Eclipse  
#2545

**\$37,991**

Super Value  
\*\*\*\$308  
per month



2025 Sportsmen  
Classic 170MBH  
#2733, #2732

**\$14,991**

Super Value  
\*\$155  
per month



2025 Forest River Salem  
Cruise Lite 24RLXL  
#2409

**\$24,991**

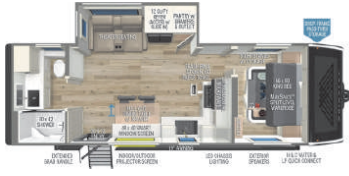
Super Value  
\*\*\$230  
per month



2025 Keystone Bullet  
Crossfire 2530RD  
#2527, #2446

**\$29,991**

Super Value  
\*\*\*\$243  
per month



2025 Brinkley Model I  
265  
#2678

**\$52,991**

Super Value  
\*\*\*\$376  
per month



2025 KZ Connect  
252BH  
#2511

**\$33,981**

Super Value  
\*\*\*\$267  
per month



2025 Venture Stratus 262VFK  
#2505

**\$34,991**

Super Value  
\*\*\*\$284  
per month



2025 Keystone Bullet  
Crossfire 270RKS #2475

**\$35,991**

Super Value  
\*\*\*\$292  
per month

Get Started Now

GET PRE-APPROVED  
IN SECONDS!

✓ No effect on credit score

✓ No SSN or DoB



# 2025 Closeouts (cont.)

SCAN TO GET  
PRE-APPROVED!



2025 Starcraft Autumn  
Ridge 27BHP #2536

**\$21,991**

**\*\*\$202**  
per month



2025 Forest River Salem  
CL 26ICE #2413

**\$22,991**

**\*\*\$211**  
per month



2025 Venture Stratus  
302VBH #2608

**\$38,991**

**\*\*\*\$317**  
per month



2025 Forest River  
Salem 27RK #2436

**\$27,991**

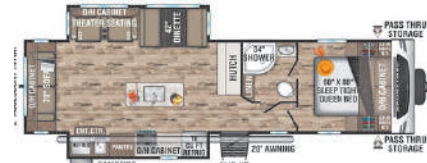
**\*\*\*\$227**  
per month



2025 Forest River  
Salem CL 22 Veranda  
#2426, #2428

**\$31,981**

**\*\*\*\$260**  
per month



2025 Venture Sporttrek  
312VIK #2713

**\$42,991**

**\*\*\*\$350**  
per month



2025 Keystone Bullet  
310RES #2473

**\$41,351**

**\*\*\*\$336**  
per month



2025 Venture Sporttrek  
327VIK #2769

**\$42,971**

**\*\*\*\$349**  
per month



2025 KZ Connect  
323MKK #2512, #2621

**\$44,891**

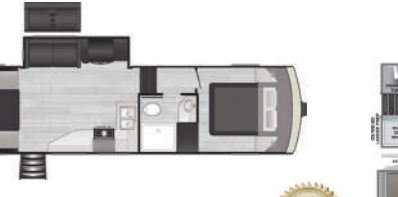
**\*\*\*\$364**  
per month



2025 Keystone Arcadia  
Select 21SRK (FW) #2655

**\$30,891**

**\*\*\*\$250**  
per month



2025 Keystone Arcadia  
Select 25SRD (FW) #2565

**\$33,891**

**\*\*\*\$275**  
per month



2025 Forest River Salem  
Hemisphere (FW) 375FAM  
#2453, #2454

**\$61,091**

**\*\*\*\*\$434**  
per month



2025 Forest River Salem  
Hemi (FW) ROOST43 #2618

**\$81,971**

**\*\*\*\*\$582**  
per month



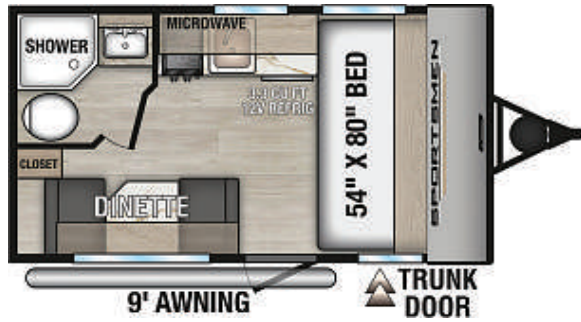
2025 Brinkley Model G  
4100 (FW) #2450

**\$159,991**

**\*\*\*\*\$1,137**  
per month

\*Financing figured with 15% down plus tax, title and license WAC for 120 Months at 7.99% \*\*Financing figured with 15% down plus tax, title and license WAC for 144 Months (Some inventory over \$50,000 may qualify for 240 months) at 7.99%  
\*\*\*Financing figured with 15% down plus tax, title and license WAC for 180 Months at 7.99%. \*\*\*\*Financing figured with 15% down plus tax, title and license WAC for 240 Months at 7.99%. See your sales associates for more details\*

# 2026 Sportsmen Classic/Se



Classic 130RD 2,570 lbs

**\$12,991**

**\*\*\$134**  
per month

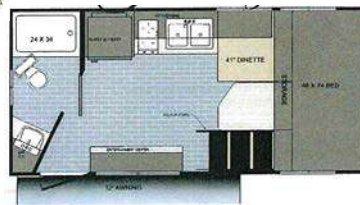


## 2026 Sportsmen SE

### Advantages over the Competition

- Made by Thor Industries- #1 manufacturer of RVs in the World
- Conventional construction – Studs are 16" on center
- 5/8" tongue and groove plywood floor decking w/sub floor vs competition's OSB planks
- One-piece PVC roof membrane – Higher solar reflectivity so you aren't as hot in the summer
- 3/8" roof decking – Fully walkable when most of this size you cannot stand on
- 2-year True hitch to bumper warranty
- Tankless on-demand water heater
- Keyed-Alike system for entry and baggage doors
- Bathroom Sink Standard
- 13.5K ROOF mounted AC vs competition's side mounted AC
- Stabilizer jacks in all corner vs only two on the rear corners

# 2026 Sunset Park Travel Trailers



"Jitterbug" Retro R136 2,860lbs

**\$21,991**

**\*\*\$202**  
per month



Sunray 119 1,795lbs

**\$13,691**

**\*\*\$126**  
per month



Sunray 149 2,140lbs

**\$15,491**

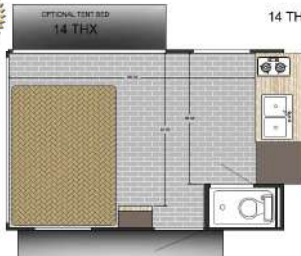
**\*\*\$142**  
per month



"Cha Cha" Retro R186  
3,380 lbs

**\$24,991**

**\*\*\$230**  
per month



Sun Lite 14THX 2,630lbs  
Toy Hauler

**\$19,991**

**\*\*\$190**  
per month



Sun Lite 16BH 2,580 lbs

**\$16,991**

**\*\*\$156**  
per month



**2026**

# Open Range Colt

## A JAYCO FAMILY COMPANY



2026 Colt 17QB 3,120 lbs

**\$12,991**

**\*134**  
per month

Super Value



2026 Colt 17DB 3,330 lbs

**\$13,491**

**\*134**  
per month

Super Value



2026 Colt 18MBS 3,990 lbs

**\$18,991**

**\*\*175**  
per month

Super Value

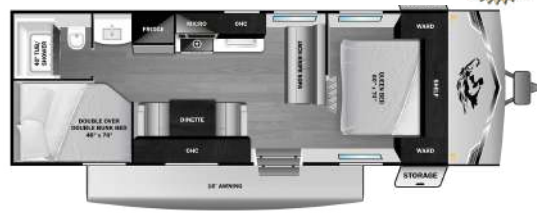


2026 Colt 21QB 4,522 lbs

**\$18,991**

**\*\*175**  
per month

Super Value



2026 Colt 26DB 4,715 lbs

**\$18,991**

**\*\*175**  
per month

Super Value



2026 Colt 26DBS 5,750 lbs

**\$19,991**

**\*\*184**  
per month

Super Value



Fiberglass Exterior 2026 Colt 32DSB 7,075 lbs

**\$34,991**

**\*\*\*\$284**  
per month

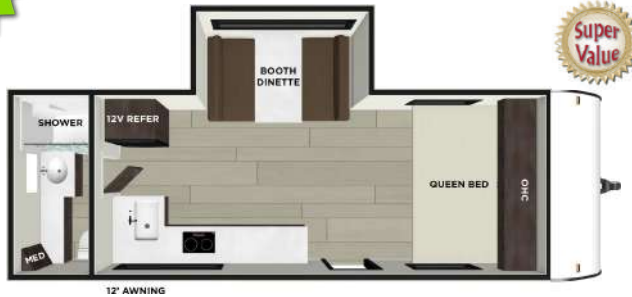
Super Value

### 2026 Open Range Colt Advantages

- Magnum Roof Truss – 4,500lb rating, screwed not stapled, 50% stronger than the competition.
- PVC Roof membrane – reflects heat so camper stay cooler & limited lifetime warranty.
- 3/8" marine grade roof decking – 4'x8' sheets, fully walkable & superior water resistance.
- All models are 8' wide – more floor space and more storage
- 5/8" marine grade main floor decking – screwed & glued = stronger and less squeaks.
- 16" on center floor joists – stronger & no saggy floors.
- Integrated A-frame – more welds and double the fastening points for superior strength.
- Extruded 1-piece I beams – no seams = stronger frames.
- Full width floor outriggers – supports the full weight of the walls
- PEX water lines – residential grade water lines.
- Galvanized wheel wells – wont crack like plastic.
- Magnetic baggage door catches – no more broken plastic clips
- Self-adjusting electric brakes & EZ lube axles
- 12v refrigerator – more efficient to run.
- 75lb. ball bearing drawer glides.
- 81" interior height vs most of the competition is 78" tall.
- Flush floor slides – no annoying lip to trip over.
- Residential hidden cabinet hinges – last longer and they are adjustable.
- Pocket screwed lumber core cabinetry – made with real wood and screwed not stapled together.
- All windows, entry & baggage doors are perimeter framed – support for all openings.
- Double wide exterior corner molds – twice the seal area to protect from water.
- Tankless on demand water heater – more hot water and no cold showers.
- Prepped for rear wall ladder & back up camera – easy installation.
- Molded holding tanks – no seams for less leaks.

**2026**

# Salem LE & Salem FSX

**FOREST RIVER**

12" AWNING

177ICE

4,099 lbs

**\$19,991****\*\*\$184 per month**

Fiberglass Exterior

178BHSKX

4,375 lbs

**\$19,991****\*\*\$184 per month****2026**

# Salem & Salem Cruise Lite

## 2026 Salem & Salem Cruise Lite Advantages

### Salem Cruise Lite

- Power Stabilizer Jacks
- Versa Furniture
- Enclosed Accessible Underbelly
- Tankless Water Heater
- PVC Roof
- Heavy Duty Aluminum Siding
- Versa-Tilt KING Bed
- LED Blade Lighting

### Salem

- Versa-Flex: Desk, Dinette & Chaise
- Heated and Enclosed Accessible Underbelly
- 81" Ceiling Height
- Flush Floor Slideout
- Power Stabilizer Jacks
- Versa Furniture
- Enclosed Accessible Underbelly
- Tankless Water Heater
- PVC Roof
- Heavy Duty Aluminum Siding
- Versa-Tilt KING Bed
- LED Blade Lighting



Cruise Lite 28VBXL 6,208 lbs

**\*\*\*\$260 per month****\$31,991**

300ICE 7,893 lbs

**\*\*\*\$284 per month****\$34,491**

31KQBTS 8,537 lbs

**\*\*\*\$325 per month****\$39,991**

**2026**

# Sienna & Sienna Lite by Venture RV



SIENNA LITE 140VFD

**\$15,491** 2,750 lbs  
**\*\*\*\$124** per month  
 Super Value



SIENNA 251VRB 6,190 lbs

**\$29,991** **\*\*\*\$243** per month  
 Super Value



8,510 lbs Sienna 293VIK

**\$43,991** **\*\*\*\$357** per month  
 Super Value

## Sienna & Sienna Lite Advantages

### Sienna Lite:

- Gloss Armor Guard Siding - .030 high gloss white exterior metal w/ baked enamel finish:
  - 30% thicker than industry norm
  - High gloss = easier cleaning & longer lasting exterior finish
  - White metal has less heat absorption = efficient cooling
- BAL NXG Frame vs competitors manual welded/painted frame
- Tankless on-demand water heater
- Fully walkable roof – easier to service
- PVC roof membrane – limited lifetime warranty
- Seamless Surf(X) counter & tabletops
- Full extension ball bearing drawer guides
- Dexter axles & hubs w/self-adjusting brakes

### Sienna:

- Gloss Armor Guard Siding - .030 high gloss white exterior metal w/ baked enamel finish: (same as Sienna Lite - see above)
- BAL NXG Frame vs competitors manual welded/painted frame
- Invision appliance suite:
  - 10CuFt 12V fridge
  - 18" 3-burner stove w/ oven
- Forced air heated and enclosed underbelly
- Residential fiberglass insulation
- Insulation wrapped holding tanks-camp longer in cooler season
- 50amp service w/ second AC prep on most models
- Tankless on-demand water heater
- 30,000 BTU furnace – competitors are around 20k BTU
- Plus 5000 BTU fireplace (except 231VRK)
- Central command center (w/ app control)
- BAL 5.0 power stabilizers – easy to use push button control



## 2026 Model Ix Advantages

- Premium Residential Cabinets with Dovetail Drawers, a hallmark of high-end cabinetry
- Road Armor™ suspension equalizer system & Hankook D rated 8-ply tires with 14" custom aluminum wheels
- Ultra Quiet & Efficient AC with 18K BTU of ducted cooling power
- Powerful Power Package with 200 watt solar panel w/ Victron 30 amp MPPT charge controller + inverter prep
- Road Mode access to refrigerator & bathroom
- Seamless Laminated Aluminum Exterior with automotive grade fully body paint and modern graphics offers clean modern styling and lasting beauty
- Brinkley Slide-Out Dining Table with utensil drawer and 2 folding chairs
- One-Piece Fiberglass Shower with NEON LED marine lighting
- 40" Smart TV with articulating mount
- SoundCore Boom 2 Bluetooth waterproof speaker
- Brinkley automotive-grade sealant package with 3-Year warranty
- Designed For full-time RVing warrantied for full-time RVing
- Queen bed w/ residential 7" memory foam bamboo mattress (60" x80" )
- Dual bedside wardrobes & nightstand cubbies w/ USB & USB-C charging ports (CPAP Ready)
- Optional 62" trifold sofa (52"x70" sleeper)
- Tankless on-demand water heater
- 30k BTU furnace
- Heated & enclosed underbelly (circulated forced air)
- Straight frame chassis
- Brinkley On-Command™ docking & utility center
- Industry first brass plumbing fittings
- Industry first low-maintenance roof
- Demco EZ latch trailer coupler

**2026**

# FIRST LOOK Brinkley Model Ix



Model Ix20 5,583 lbs

**\$46,995**

**\*\*\*\$382** per month

- ✓ Lightweight
- ✓ Half-Ton Towable
- ✓ SUV-Towable

**\$47,995**

**\*\*\*\$390** per month



Model Ix 23 5,771 lbs

\*Financing figured with 15% down plus tax, title and license WAC for 120 Months at 7.99%. \*\*Financing figured with 15% down plus tax, title and license WAC for 144 Months (Some inventory over \$50,000 may qualify for 240 months) at 7.99%. \*\*\*Financing figured with 15% down plus tax, title and license WAC for 180 Months at 7.99%. \*\*\*\*Financing figured with 15% down plus tax, title and license WAC for 240 Months at 7.99%. See your sales associates for more details\*.

# 2026 KZ Connect

2 Baths!



301BKSE  
7,050 lbs **\$37,991**

**\*\*\*\$308**  
per month



313MK  
8,680 lbs **\$47,991**

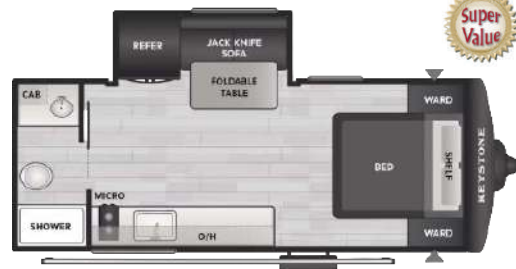
**\*\*\*\$390**  
per month

## 2026 Keystone Bullet Classic Brand Advantages

- Laminated Gel-Coat Fiberglass Exterior
- Fully Walkable Roof
- Tankless Water Heater
- HyperDeck High Performance Water-Resistant Floor
- 3 Year Limited Structural Warranty



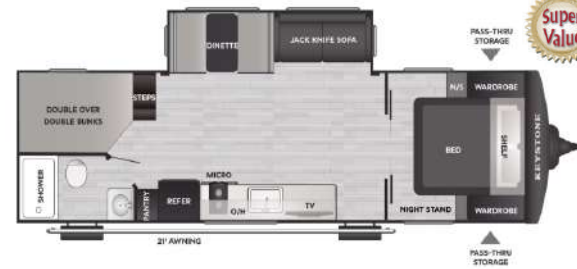
# 2026 Keystone Bullet Classic



18RBC 3,890 lbs

**\$24,991**

**\*\*\*\$230**  
per month



26BHC 5,320 lbs

**\$28,991**

**\*\*\*\$235**  
per month

## 2026 Open Range - Range Lite



250RBL  
5,545 lbs **\$33,991**

**\*\*\*\$276**  
per month



211RKM  
4,960 lbs **\$29,991**

**\*\*\*\$243**  
per month



280MKI  
7,305 lbs **\$36,991**

**\*\*\*\$300**  
per month

## A JAYCO FAMILY COMPANY

### Range Lite Highlights

- Magnum Roof System
  - PVC Roofing Membrane
  - Walkable Roof
- Tuffshell Fiberglass walls
  - Aluminum Framed w/ Block Foam Vacuum Bonded laminated walls
- Enclosed Docking Station
- Xtend Solar 1 Package Standard
- 12v 10cu. ft. fridge
- Rain guttering with molded drip spouts
- Self adjusting electric brakes
- Thermal seal enclosed insulated and heated underbelly
- 75 lb. ball bearing drawer guides
- 81" Int. height
- Flush floor slides w/ residential vinyl flooring
- Hardwood cabinet doors w/ hidden hinges
- Nitrogen Filled Radial tires w/ aluminum rims

# 2026 Venture Stratus



Super Value  
**\*\*\*\$308**  
 per month  
**\$37,991**



261vrb 6,720 lbs

## 2026 SportTrek Advantages over the Competition

### Sporttrek TT:

- Fiberglass front cap – Durable, aerodynamic front profile resists road wear & enhances exterior styling.
- Azdel laminated sidewalls & rear wall - Lightweight, water-resistant construction prevents rot & improves insulation.
- 5/8" tongue-and-groove floor decking –Strong, residential-grade flooring reduces flex & increases long-term durability.
- Power tongue & stabilizer jacks – Makes setup fast & effortless
- NXG huck-bolt frame – Rigid, automotive-style frame built for superior strength & stability.
- High-polished aluminum rims w/ black accents – Premium wheels add durability & style.
- 82" interior ceiling height – Taller ceilings create more open & spacious interior. More storage than most campers in its class - Offers expanded space for gear without sacrificing living area.
- Beaufloor wood plank flooring w/Beaufloor slide floors – Durable, low-maintenance flooring resists moisture & looks like real wood.
- 12V heat pad on fresh water tank –Protects your fresh tank from freezing so you can camp confidently in cold weather.
- Reflective PVC roof membrane – Provides long-lasting, heat-reflective protection to keep the RV cooler & prevent roof wear.
- Serta memory foam mattress - Upgrades sleep quality.
- Modern Farmhouse interior w/ hand-glazed cabinet doors – Creates warm, stylish living space w/ high-quality craftsmanship.
- Bluetooth connectivity on main control panel - Lets you monitor & operate key RV systems conveniently from your phone.

### Sporttrek Touring TT:

- BAL Huck Bolt frame with auto leveling
- AZDEL composite fiberglass sidewalls
- Drop frame for maximum passthrough storage
- One-piece TUFFLEX PVC roof w/ limited lifetime warranty
- Keyed alike entry doors and baggage doors
- 200W Solar standard
- 5/8" tongue and groove plywood flooring – Beaufloor with 7 year limited warranty
- Tankless water heater
- 2 fireplaces standard
- Solid surface countertops
- Heat and massage on theater seating in applicable units
- Forced air heated and enclosed underbelly including gate valves and a 12V heat pad on the fresh tank

# 2026

## SportTrek Total Luxury Trailers



Sporttrek Stinger 161VUD

3,840 lbs

Super Value  
**\$23,991**

\*\*\*\$247  
 per month



Sporttrek 271VRB

6,770 lbs

Super Value  
**\$42,991**

\*\*\*\$349  
 per month



Sporttrek touring 292vrb

8,030 lbs

Super Value  
**\$53,991**

\*\*\*\*\$384  
 per month



Sporttrek Touring 343VIK 9,290 lbs

Super Value  
**\$61,991**

\*\*\*\*\$440  
 per month



\*Financing figured with 15% down plus tax, title and license WAC for 120 months at 7.99% \*\*Financing figured with 15% down plus, tax, title and license WAC for 144 Months (Some inventory over \$50,000 may qualify for 240 months) at 7.99% \*\*\*Financing figured with 15% down plus tax, title and license WAC for 180 Months at 7.99%. \*\*\*\*Financing figured with 15% down plus tax, title and license WAC for 240 Months at 7.99%. See your sales associates for more details\*



## 2026 Intech RV

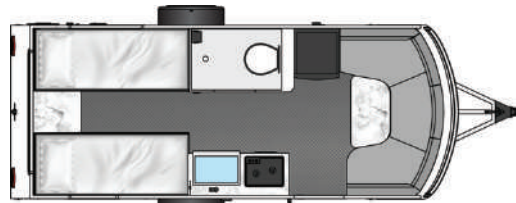


Flyer Pursue

**\$20,595**

1,690 lbs

**\*\*\$189**  
per month

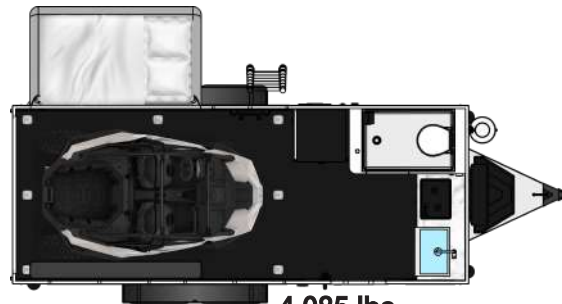


Sol Dusk

3,980 lbs

**\$44,995**

**\*\*\*\$365**



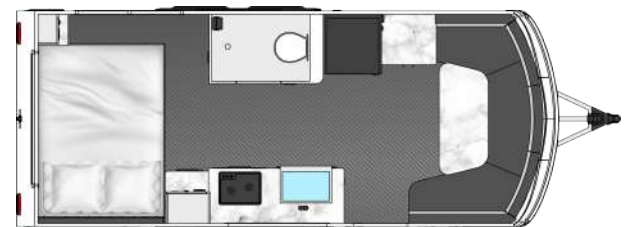
Flyer Forge

4,085 lbs

2nd pull down  
bunk optional!

**\$39,995**

**\*\*\*\$325**  
per month



Aucta Magnolia Rover

5,086 lbs

**\$59,995**

**\*\*\*\*\$426**  
per month



Aucta Sycamore

6,930 lbs

**\$73,970**

**\*\*\*\*\$526**  
per month

Bunks/Multi Office



Black Wing 830-x

6,500 lbs

**\$79,995**

**\*\*\*\*\$568**  
per month



### Intech Advantages

- (Class leading) Fully welded cage to the chassis to eliminate twists or structural weaknesses
- Weight friendly- cut by 1/3 using aluminum instead of steel

# 2026 BRINKLEY TRAVEL TRAILERS



2025 Model I 265

**\$52,991**

7,623 lbs

\*\*\*\*\$376/mo\*



Model I 275

**\$62,995**

7,894 lbs

\*\*\*\*\$448/mo\*



Model I 280

**\$69,995**

8,411 lbs

\*\*\*\*\$497/mo\*



Model Z Air 285

**\$69,991**

9,888 lbs

\*\*\*\*\$497/mo\*



Model Z Air 310

**\$91,995**

10,961 lbs

\*\*\*\*\$654/mo\*



\*Financing figured with 15% down plus tax, title and license WAC for 120 Months at 7.99% \*\*Financing figured with 15% down plus tax, title and license WAC for 144 Months (Some inventory over \$50,000 may qualify for 240 months) at 7.99% \*\*\*Financing figured with 15% down plus tax, title and license WAC for 180 Months at 7.99%. \*\*\*\*Financing figured with 15% down plus tax, title and license WAC for 240 Months at 7.99%. See your sales associates for more details\*

# 2026 Open Range Roamer Advantages

## Roamer Light Duty

- Alpha Ply TPO Roof Membrane (Thickest roof membrane)
- Thermal Seal zero-degree tested weather protection
- Dexter Rubberized Suspension for smoother ride and less road shock
- Vacuum Bonded Laminated Construction- superior construction process exclusive to Jayco's Family of recreation vehicles. EVERY sidewall, rear wall and slide room wall is bonded together for a minimum of 16 minutes under 144 tons of pressure to create the lightest yet strongest construction available in the RV industry
- Porcelain Toilet
- 15,000 BTU Whisper Quiet A/C
- On Demand Water Heater
- 200 watt solar panel & 30amp Solar Charge Controller

## Roamer:

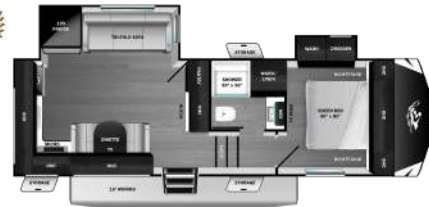
- Everything above
- LED Fireplace with 5,000 BTU electric space heater
- Solid Surface Countertops
- Auto Leveling



**2026**

# Open Range Roamer 5th Wheel

A Jayco Family Company



Roamer Light Duty  
24MLDS 8,115 lbs

**\$36,991**

**\*\*\*\$300**  
per month



29RLDS 9,750 lbs

**\$49,991**

**\*\*\*\$406**  
per month



32RLTS 11,050 lbs

**\$59,991**

**\*\*\*\$426**  
per month



35MRQS 13,125 lbs

**\$63,991**

**\*\*\*\$455**  
per month

# 2026 Keystone Arcadia 5th Wheel



Select 27SBH  
7,895 lbs

**\$38,991**

**\*\*\*\$317**  
per month



3790RO  
Rear office floor plan  
12,570 lbs

**\$75,995**

**\*\*\*\$539**  
per month

## 2026 Keystone Arcadia Advantages

- Frameless windows
- Painted fiberglass front cap – Resists Fading & Wear
- Rotoflex pinbox – Reduces chucking & absorbs road shock
- Giddy Box – Centralized, wiring hub simplifies troubleshooting & improves electrical reliability.
- Tankless water heater
- Heated enclosed underbelly – Protects tanks and lines
- Color-coded wiring – Streamlined wiring layout
- Residential hardwood cabinet doors
- Blade air handling system – Maximizes airflow efficiency for faster cooling & more consistent interior comfort.
- Towing hitch – Adds rear utility for bike racks or small cargo carriers to expand what you can bring along.
- Dual-zone Bluetooth radio with DVD player – Lets you enjoy separate indoor/outdoor audio zones w/ wireless control.
- Keystone's network of dealerships & customer support – Provides nationwide service access for peace of mind wherever you travel.

## 2026 Keystone Sprinter Advantages

- Wide body for more space inside
- TPO roof membrane with lifetime warranty
- One-piece DynaSpan flooring
- Heated & enclosed underbelly, including gate valves and tank heating pads
- Full profile for maximum space in the front of the coach
- 2 interior color options, Teak and Sand
- E-Z Lube Dexter axles w/ Nev-R-Adjust brakes
- Winegard 360 antenna with built in WiFi hotspot
- Radiant foil insulation in the floor, roof, and main slidebox floor
- Solarflex prepped- packages can include 220W, 440W, or 660W of solar
- Units are inverter prepped
- Tru-Fit slide construction to increase slide durability, decrease motor stress, and protect from weather



**2026**

# Keystone Sprinter FW



3980FBS

**\$67,991**

12,661 lbs

\*\*\*\*\$483  
per month



3950SSP

**\$77,991**

13,900 lbs

\*\*\*\*\$554  
per month

## 2026 Venture SportTrek Touring FW



Sporttrek 303VIK

10,390 lbs

**\$62,991** \*\*\*\*\$448  
per month



Sporttrek 353VIK

11,750 lbs

**\$69,991** \*\*\*\*\$497  
per month



Sporttrek Touring 354VBH

12,610 lbs

**\$69,991** \*\*\*\*\$497  
per month



Sporttrek Touring 365VFL

12,510 lbs

**\$79,995** \*\*\*\*\$568  
per month

## 2026 SportTrek 5th Wheel Advantages over the Competition

- BAL NXG Huck-bolted, powder-coated drop-frame construction engineered to prevent frame failure
- MorRyde CRE 3,000 suspension for smoother towing and reduced road shock
- Painted fiberglass front cap with LED lighting
- Laminated rear wall and Azdel laminated sidewalls with closed-cell foam insulation
- Three-layer insulation system with residential fiberglass and radiant foil in roof, floor, and front wall
- Fully heated and enclosed one-piece underbelly with forced-air heated gate valves
- Radiant foil-wrapped and heated holding tanks
- Heat ducting into pass-thru storage areas
- Reflective Tufflex PVC roof membrane with limited lifetime warranty; higher tear resistance and reduced heat absorption
- 5/8" tongue-and-groove plywood flooring
- Best-in-class 185 cu ft of pass-thru storage
- 200W solar panel with 30A MPPT controller and 1200W inverter
- Tankless on-demand water heater
- 18 cu ft 12V double-door refrigerator
- 21" oven with air-fryer functionality
- Solid hardwood cabinet doors and drawer faces with solid-surface countertops
- Venture Control Center with Bluetooth connectivity
- BAL 4-point electric leveling system
- Multiple fireplaces including 5,000-BTU living room and bedroom units (select models)
- Washer/dryer prep
- Outside kitchen (select models) with 40" smart TV, JBL Bluetooth speaker, 3 cu ft fridge, Lodge griddle, stainless sink, spray hose, and hot/cold adjustable faucet

## 2026 Open Range 3X Luxury Fifth Wheels by Highland Ridge RV



14,565 lbs 3X 390TBS



**\$99,999**

\*\*\*\*\$710  
per month

- 3" Thick Side Walls
- 102" Wide Body
- 84" tall & 48" Deep Accu-slide
- Tuff-Shell Vacuum Bonded Construction
- 3x 15000 BTW A/Cs Standard

\*Financing figured with 15% down plus tax, title and license WAC for 120 Months at 7.99% \*\*Financing figured with 15% down plus tax, title and license WAC for 144 Months (Some inventory over \$50,000 may qualify for 240 months) at 7.99%  
\*\*\*Financing figured with 15% down plus tax, title and license WAC for 180 Months at 7.99%. \*\*\*\*Financing figured with 15% down plus tax, title and license WAC for 240 Months at 7.99%. See your sales associates for more details\*

# 2026 BRINKLEY Model Z



Brinkley 2680

11,118 lbs

**\$87,995**

\*\*\*\*\$625  
per month



Brinkley 2700

11,462 lbs

**\$96,995**

\*\*\*\*\$689  
per month



Brinkley 2810

12,296 lbs

**\$89,995**

\*\*\*\*\$639  
per month



Brinkley 2900

12,190 lbs

**\$96,995**

\*\*\*\*\$689  
per month

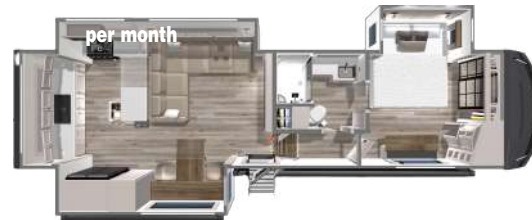


Brinkley 3100

12,524 lbs

**\$98,995**

\*\*\*\*\$703  
per month



Brinkley 3200

12,476 lbs

**\$102,995**

\*\*\*\*\$732  
per month



Brinkley 3420

ON ORDER

14,794 lbs

**\$111,995**

\*\*\*\*\$796  
per month



Brinkley 3600

FULL BODY PAINT

13,998 lbs

**\$126,995**

\*\*\*\*\$902  
per month



Brinkley 3610 15,192 lbs

**\$113,995**

\*\*\*\*\$810  
per month



## Model Z Advantages over the Competition

- Every units undergoes a 350+ point inspection at the factory
- 3-year limited internal seals & gasket warranty
- 20- year roof membrane warranty & 25-year seal warranty
- Industry exclusive road simulation shake test
- Monotube chassis (built to Brinkleys specs and certified)
- Chassis is triple powder coated
- 4-point or 6-point one-touch auto leveling with wide stance jacks is standard
- Backup camera & wireless monitor with observation/security mode
- Pre-wired for up to 5500w generator (front storage compartment)
- Hydraulic jacks and slides
- Soft close cabinets and drawers
- 18k BTU Furrion Chill Cube main air conditioner with heat pump
- 13.5k BTU Front (bed & bath) with heat pump is standard
- Ductless floors in main living areas(better distribution of heat)
- 76" slide box height
- 79.5" ceiling height in front bedroom (industry best)
- Full-time RV warranty
- 17.5" H-Rated Michelin tires with TPMS
- Banded tire pressure monitoring system (TPMS) with wireless display is standard
- Galvanized wheel well shields
- TCS suspension with 5" of travel (reduces frame shock by 50%)
- Anit-lock braking system (ABS) with anti-sway & Dynamic brake boost is standard
- 2" rear receiver hitch with 4-way connector (300lbs tongue weight & 3,000lbs GTW)
- Curt Helux pinbox standard (30% shock reduction from average pinbox)
- PEX plumbing with Brass fittings (industry first)
- ALL water sources have shutoff valves
- 65' retractable city water hose on every model
- Thermaflex heat duct (no kinks binds or tears)
- 5/8" Marine grade OSB one-piece floor decking
- Average CCC of 3,400lbs
- 370W solar panel and 50A charge controller standard (scalable to 740W)
- Full body paint is an option in 2026

**2026**



# 2026 Brinkley Model G



**3970**

**\$181,995**

\*\*\*\*  
18,982 lbs  
**1,293**  
per month



**2025 Closeout!**

**4100**

**\$159,991**

\*\*\*\*  
18,724 lbs  
**1,137**  
per month

## Advantages over the Competition

- 7k Dexter axles with disc brakes, 8k leaf springs & SUMO springs for improved stopping power, shorter stopping distances, and reduced shock
- FireFly control center for remote control of A/C, generator, and subsystems via WiFi
- RGB front cap light with turn signal functionality
- Impact Guard fiberglass roof with .040" UV-protected membrane (10-year warranty, 30-50 year life expectancy)
- Victron MultiPlus II inverter/charger, 50A charge controller & DC-to-DC charger
- Three-season doors with residential handle, rubber seals, and sealed hinges to prevent water intrusion
- Brinkley chassis with full hanger boxes, V-brackets between hangers, thicker aluminum wall tubing, added gussets, and individually powder-coated frames
- 5/16" chassis flanges at pin box/gooseneck connection (vs. standard 1/4")
- Only brand with GEN-Y king pin standard and gooseneck option
- Highest average CCC in its class (over 4,900 lbs)
- .078" thick fiberglass (vs. .065" competitors) for better resistance to temperature, moisture, and environmental stress
- RVMP Flex Temp on-demand tankless water heater: zero fuel when idle, 140° emergency cutoff, freeze protection, unlimited hot water
- Furrion Vision S+ observation system standard
- Industry-leading 110+ cu ft pass-through storage
- 12V outdoor fridge/freezer
- RVMP 5500e dual-fuel generator with EFI (no elevation or cold-weather issues)
- Dovetail drawer boxes, soft-close cabinet doors and drawers
- Largest pull-out pantry in the industry with adjustable shelves
- 30" GE Profile microwave with air fryer & 19 cu ft GE Profile refrigerator
- Dishwasher prep
- Multifunctional garage (flex space/bonus room/office)
- Premium Rockford Fosgate audio system throughout

\*Financing figured with 15% down plus tax, title and license WAC for 120 Months at 7.99% \*\*Financing figured with 15% down plus tax, title and license WAC for 144 Months (Some inventory over \$50,000 may qualify for 240 months) at 7.99%  
\*\*\*Financing figured with 15% down plus tax, title and license WAC for 180 Months at 7.99%. \*\*\*\*Financing figured with 15% down plus tax, title and license WAC for 240 Months at 7.99%. See your sales associates for more details\*

Revised  
1/6/2026



746 Industrial Drive  
Blue Grass, IA 52726  
(563) 424-7788

premierrv.com

**PREMIER RV**  
746 Industrial Drive  
Blue Grass, IA 52726

**Travel Trailers**

Stack#	Layout	Sleep	Ext.	Slide	Year	Model	Bed	Air	Awning	UVW	Status	Price	Super Value	L	RVT
3005	RK	2	FIB	0	2025	Bontrager Outdoors 10HD	CD	1	manual	1,500	90 day	\$9,991	\$9,991	10	1
3180	TD	2	AL	0	2022	Sunset Park Sunray 109	TB	1	manual	1,440	as-is	\$8,495		12	1
3151	FK	2	FIB	0	2022	Braxton Creek Bushwacker 15DS	CQ	1	-	3,126	as-is	\$9,995		15	1
2704	BH	4	FIB	0	2017	Venture Sonic Lite SL169VBH	MB	1	electric	3,150	as-is	\$12,995	\$8,991	16	1
3188	BH	3	AL	0	2022	Sunset Park Sun Lite 16BH	CD	1	electric	2,480	as-is	\$12,495		16	1
2777	FD	3	FIB	0	2022	Nucamp Tab 400 Boondock	CQ	1	-	3,011	as-is	\$27,695	\$25,991	18	1
2908	FK	4	FIB	1	2025	KZ Connect Mini 181FKK	CQ	1	electric	4,220	90 day	\$22,995		18	1
2865	RB	2	FIB	0	2021	Forest River No Boundries 19.2	MB	1	electric	3,565	as-is	\$19,995	\$15,991	19	1
2879	RB	4	FIB	1	2022	Forest River Survivor Legend 19RBLE	QT	1	electric	3,865	as-is	\$18,995	\$17,991	19	1
2888	FD	4	AL	0	2022	Intech Sol Horizon	CQ	1	electric	3,372	as-is	\$29,895		19	1
3020	BH	8	FIB	0	2022	Primetime Tracer LE 200BHSLE	QT	1	electric	4,321	as-is	\$16,995	\$15,991	20	1
3116	RB	4	FIB	1	2023	Starcraft Autumn Ridge 20FBS	QT	1	electric	4,799	as-is	\$19,995		20	1
2870	RB	4	FIB	1	2019	Fla staff Micro Lite 21DS	MB	1	electric	4,625	as-is	\$16,995	\$14,991	21	1
3021	BH	8	FIB	0	2025	Keystone Passport Classic 214BH	MB	1	electric	4,370	90 day	\$23,995		21	1
3182	RB/RK	4	FIB	1	2022	FR Rockwood Mini Lite 2109S	QT	1	electric	4,508	as-is	\$22,995		21	1
2321	RE	3-4	FIB	1	2023	KZ Connect SE 221RESE	QT	1	electric	5,134	as-is	\$25,991	\$22,991	22	1
2792	RB	4	FIB	1	2017	Dutchmen Kodiak 223RBSL	QT	1	electric	4,500	as-is	\$16,995	\$14,991	22	1
2876	RB	4	AL	1	2022	Winnebago Minnie 2201MB	MB	1	electric	5,741	as-is	\$20,595	\$18,991	22	1
3016	FD	4	AL	0	2024	InTech Terra Mongolia	QC	1	electric	5,086	as-is	\$49,995		22	1
3134	RK	4	FIB	1	2021	Grand Design Imagine 22MLE	QT	1	electric	5,252	as-is	\$19,995		22	1
2852	RB	4	FIB	1	2013	Forest River Rockwood 2304S	MB	1	electric	4,775	as-is	\$8,995		23	1
2898	BH	8	FIB	1	2023	Coachmen Apex Ultra-lite 245BHS	QT	1	electric	4,668	as-is	\$26,995	\$21,991	24	1
3022	BH	8	FIB	1	2024	Jayco Jay Feather 24BH	QT	2	electric	6,266	as-is	\$32,995	\$29,991	24	1
3065	RL	6	AL	1	2019	Jayco Jay Flight SLX 8 245RSL	QT	1	electric	5,343	as-is	\$14,995		24	1
2783	RB	4	FB	1	2024	Wildwood HG Hyper-Lite 25RBHL	QT	1	electric	6,729	as-is	\$29,995	\$28,991	25	1
2882	BH	8	FIB	1	2023	Jayco Whitehawk 25MBH	MB	1	electric	6,489	as-is	\$34,981	\$33,991	25	1
2894	RB	6	FIB	2	2017	Keystone Cougar X-lite 26RBI	KI	1	electric	6,120	as-is	\$19,995		26	1
3166	BH	10	AL	1	2016	Jayco Jay Flight SLX 267BHSW	QT	1	electric	5,713	as-is	\$12,795		26	1
2358	BH	10	FIB	1	2017	Keystone Bullet 272BHS	QT	1	electric	5,150	as-is	\$19,695	\$13,991	27	1
2648	FK	6	FIB	2	2023	KZ Connect 272FK	KI	1	electric	7,120	as-is	\$39,995	\$29,981	27	1
2939	RL	4	FIB	2	2020	Keystone Laredo 275RL	KI	1	electric	6,540	as-is	\$25,995		27	1
3155	RL	2	AL	0	2025	Intech OVR Navigator	TB	1	electric	6,057	90 day	\$48,995		27	1
3193	BH	10	AL	0	2021	East To West Silver Lake 27KNS	QT	1	electric	5,509	as-is	\$12,995		27	1
2843	RB	6	AL	1	2022	Crossroads Zinger 280RB	QT	1	electric	6,700	as-is	\$23,895		28	1
2964	RK	6	AL	1	2022	KZ Sportsmen SE 301RKSE	QT	2	electric	6,440	as-is	\$28,985	\$25,991	30	1
2902	RL	6	FIB	3	2021	KZ Connect 313RL	KI	1	electric	7,900	as-is	\$29,995		31	1
3006	BH	9	FIB	2	2022	KZ Connect 312BHKSE	QT	1	electric	7,340	as-is	\$28,995		31	1
3083	BH	8	FIB	2	2019	Grand Design Imagine 3170BH	QT	2	electric	8,102	as-is	\$24,995		31	1
3104	BH	9	FIB	1	2011	FR Rockwood Ultra Lite 8318SS	QT	1	electric	6,743	as-is	\$12,995		31	1
2965	BH	11	FIB	3	2017	Venture SportTrek 320VIK	QT	1	electric	7,530	as-is	\$20,795	\$19,991	32	1
3038	BH	10	AL	2	2018	Jayco Jay Flight 324BDS	QT	1	electric	7,758	as-is	\$18,495		32	1

**Travel Trailer Toy Haulers**

Stack#	Garage	Sleep	Ext.	Slide	Year	Model	Bed	Air	Awning	UVW	Status	Price	Super Value	L	RVT
3152	11'9"	4	AL	0	2022	Intech Flyer Discover	CD	1	electric	2,784	as-is	\$22,695		18	1
3002	16'	8	AL	2	2022	Grand Design Momentum 28G	QT	2	electric	9,172	as-is	\$39,995		28	1
2910	16'	6	AL	1	2021	Coachmen Catalina 30THS	QT	1	electric	7,450	as-is	\$26,995	\$24,991	30	1

**Toy Hauler Fifth Wheels**

Stack#	Layout	Sleep	Ext.	Slide	Year	Model	Bed	Air	Awning	UVW	Status	Price	Super Value	L	RVT
3035	FWTH	4	AL	0	2019	Forest River Cherokee 255RR	QT	1	electric	6,740	as-is	\$18,995		25	1
2915	FWTH	7	FIB	3	2024	Brinkley Model G 3500	QT	3	electric	17,470	as-is	\$123,595	\$119,991	35	1
3186	FWTH	7	FIB	3	2017	Dutchmen Voltage 3805	QT	3	electric	15,120	as-is	\$46,995		38	1
3069	FWTH	7	FIB	3	2020	Keystone Raptor 423	KI	3	electric	14,980	as-is	\$59,995		42	1

**Fifth Wheels**

Stack#	Layout	Sleep	Ext.	Slide	Year	Model	Bed	Air	Awning	UVW	Status	Price	Super Value	L	RVT
2918	RL	6	FIB	2	2017	FR Rockwood Ultra Lite 2440WS	QT	1	electric	6,590	as-is	\$19,995		24	1
2465	RD	4	FIB	2	2023	Keystone Arcadia S.L. 253SLRD	QT	1	electric	7,720	as-is	\$39,995	\$32,991	25	1
3071	RL	4	FIB	2	2014	Keystone Sprinter 269FWRLS	QT	2	electric	8,600	as-is	\$14,995		26	1
2978	RL	6	FIB	3	2013	Starcraft Travel Star 286RL	QT	1	electric	8,609	as-is	\$19,995	\$17,991	28	1
3154	BH	6	FIB	2	2018	Open Range Ultra Light 2950BH	QT	1	electric	8,310	as-is	\$17,995		29	1
2873	RL	4	FIB	3	2023	Grand Design Reflection 303RLS	QT	2	electric	9,848	as-is	\$45,995		30	1
2931	RL	4	FIB	3	2021	Primetime Crusader 305RLP	QT	2	electric	9,444	as-is	\$39,995		30	1
3050	RK	6	FIB	3	2007	Dutchmen Denali 31RGSB	QT	1	manual	9,677	as-is	\$11,995		31	1
3195	RL	4	FIB	3	2013	Keystone Montana Big Sky 3100RL	QT	2	electric	11,587	as-is	\$21,995		31	1
2690	RL	4	FIB	3	2011	Heartland Bigcountry 3250TS	QT	1	electric	10,524	as-is	\$17,995	\$16,991	32	1
3194	RL	4	FIB	3	2015	Shasta Phoenix 33CK	QT	2	electric	10,026	as-is	\$9,995		33	1
3190	RL	6	FIB	4	2017	Keystone Sprinter 353FDEN	QB	2	electric	10,860	as-is	\$28,995		35	1
3153	BH	8	FIB	3	2022	Open Range Roamer 364BHS	QT	2	electric	11,337	as-is	\$46,995		36	1

Bed: ● = queen island, KI - king island, C● - corner queen, CD - corner double, ●RS = queen rear slide, ●FO = queen foldout, MB = Murphy Bed, HY=Hybrid

Disclaimer - all information and weights are approximate. Not responsible for errors in information, weights and pricing. See Salesperson for complete information.

PRST STD  
U.S. POSTAGE  
**PAID**  
Permit No. #62  
Rock Island, IL