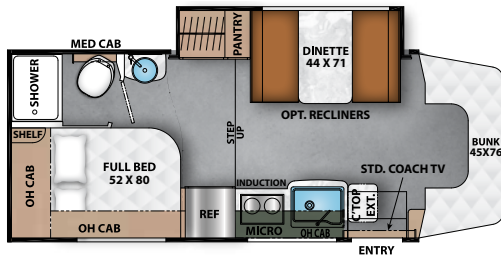


PRISM SELECT

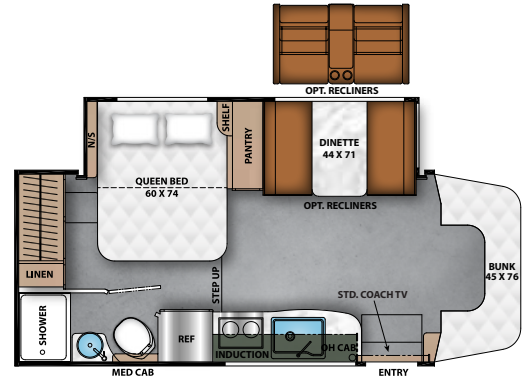
PRISM ELITE



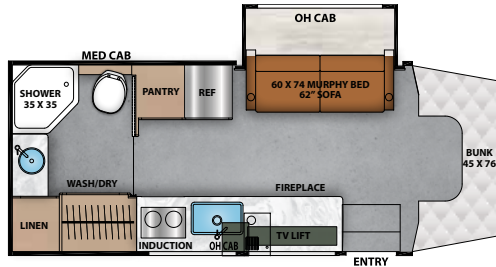
24CB



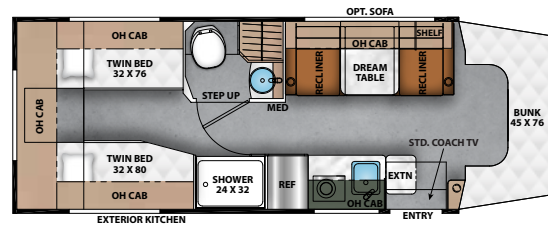
24FS



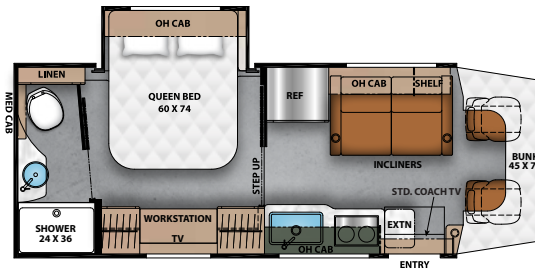
24MB



25TB



26RB



KEY FEATURES

PRISM SELECT

- Molded Fiberglass Front Cap with Front Window with Built-In Power Shade
- Azdel Substrate with Aluminum Framing
- Intelligent Voice Control System with Adaptive Cruise Control and Active Lane-Keeping Assist
- Coach TV
- Induction Cooktop

- Convection Microwave
- Tankless Water Heater
- Full Body Paint (Optional)
 - Cacti Green
 - Harbour Blue
- Starlink Prep
- Frameless Windows

PRISM ELITE

- Full Body Paint
- Exterior Entertainment Center
- Cabover Deluxe Power Vent Fan with Cover
- Solid Surface Countertops with Lit Edges
- Soft Touch Ceiling
- 15K Low Profile A/C with Heat Pump
- Armless Awning with LED Light
- Upgraded Slam Latch Trunk Doors

PRISM SPECIFICATIONS

	24CB	24FS	24MB	25TB	26RB
CHASSIS	3500 SPRINTER	3500 SPRINTER	3500 SPRINTER	3500 SPRINTER	3500 SPRINTER
ENGINE	4 CYL. DIESEL	4 CYL. DIESEL	4 CYL. DIESEL	4 CYL. DIESEL	4 CYL. DIESEL
HORSE POWER	208	208	208	208	208
TORQUE	322	322	322	322	322
WHEEL BASE	170"	170"	170"	170"	170"
GVWR (LBS.)	11,030	11,030	11,030	11,030	11,030
GCWR (LBS.)	15,250	15,250	15,250	15,250	15,250
UVW (APPROX. LBS.)	9,250	9,875	9,875	9,820	10,025
GAWR FRONT (LBS.)	4,409	4,409	4,409	4,409	4,409
GAWR REAR (LBS.)	7,721	7,721	7,721	7,721	7,721
INTERIOR HEIGHT	6' 9"	6' 9"	6' 9"	6' 9"	6' 9"
EXTERIOR WIDTH	7' 8"	7' 8"	7' 8"	7' 8"	7' 8"
EXTERIOR HEIGHT (WITH A/C)	11' 7"	11' 7"	11' 7"	11' 7"	11' 7"
EXTERIOR LENGTH (WITH HITCH) (SELECT)	25' 2"	25' 2"	25' 2"	26' 2"	26' 2"
EXTERIOR LENGTH (WITH HITCH) (ELITE)	25'	25'	25'	26'	26'
HITCH WEIGHT (LBS.)	5,000	5,000	5,000	5,000	5,000
FUEL CAPACITY (GAL.)	26	26	26	26	26
LP CAPACITY (LBS.)	100	100	100	100	100
FRESH WATER CAPACITY (GAL.)	29	35	32	29	29
WATER HEATER CAPACITY (GAL.)	TANKLESS	TANKLESS	TANKLESS	TANKLESS	TANKLESS
GREY TANK CAPACITY (GAL.)	32	32	32	53	32
BLACK TANK CAPACITY (GAL.)	32	35	32	28	32
EXTERIOR STORAGE (CU. FT.)	46	37	34	45	34
AWNING LENGTH (SELECT)	14'	14'	14'	14'	14'
AWNING LENGTH (ELITE)	14' ARMLESS	14' ARMLESS	14' ARMLESS	14' ARMLESS	14' ARMLESS

GVWR (Gross Vehicle Weight Rating) is the maximum permissible weight of the unit when fully loaded. It includes all weights, inclusive of all fluids, occupants, cargo, optional equipment and accessories. For safety and product performance do NOT exceed the GVWR.

GCWR (Gross Combined Weight Rating) is the maximum permissible loaded weight of your motor home and any towed trailer or towed vehicle. Actual GCWR of this vehicle may be limited by the sum of the GVWR and the installed hitch receiver maximum capacity rating; see hitch rating label for detail.

GAWR (Gross Axle Weight Rating) is the maximum permissible weight, including cargo, fluids, optional equipment and accessories that can be safely supported by each axle.

UVW (Unloaded Vehicle Weight)* is the typical weight of the unit as manufactured at the factory. It includes all weight at the unit's axle(s), including full fuel, all fluids and LP Gas. The UVW does not include cargo, fresh potable water, additional optional equipment or dealer installed accessories.

*Estimated Average based on standard build optional equipment.

CCC (Cargo Carrying Capacity)** is the amount of weight available for fresh potable water, cargo, passengers, additional optional equipment and accessories. CCC is equal to GVWR minus UVW. Available CCC should accommodate fresh potable water (8.3 lbs per gallon). Before filling the fresh water tank, empty the black and gray tanks to provide for more cargo capacity.

** Estimated average based on standard build optional equipment

Each Coachmen motorhome is weighed at the manufacturing facility prior to shipping. A label identifying the unloaded vehicle weight of the actual unit and the cargo carrying capacity is applied to every Coachmen motorhome prior to leaving our facilities.

The load capacity of your unit is designated by weight, not by volume, so you cannot necessarily use all available space when loading your unit.

Actual towing capacity is dependent upon your particular loading and towing circumstances, which includes the GVWR, GAWR and GCWR as well as adequate trailer brakes. Please refer to the Operator's Manual of your vehicle for further towing information.

PRISM



423 N. Main Street
P.O. Box 30
Middlebury, IN 46540

To learn more about Coachmen RV and our products and see how Coachmen is making the easy life easier, call us toll free at **(800) 353-7383**, or visit www.coachmenrv.com

