

FREEDOM EXPRESS

ULTRA LITE • LIBERTY • MAPLE LEAF • SELECT



#FreedomtoExplore



Coachmen
Recreational Vehicles

A division of Forest River, Inc.

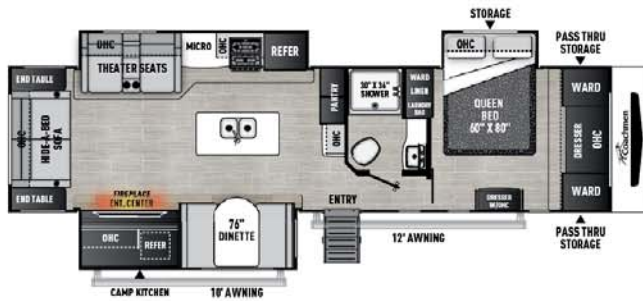


Freedom Express Ultra Lite Travel Trailers are loaded with industry leading features in an affordable, value-packed RV, designed to be towed by today's midsize SUVs and half-ton vehicles. You're sure to find a floorplan that suits your style, whether you are going it alone, or taking the whole family.

[illegible]

LIBERTY/MAPLE LEAF EDITION TRAVEL TRAILERS

Combine luxury amenities with popular floorplans in an affordable, value-added package designed for easy towing by today's midsize SUVs and half-ton vehicles.



324 RLSLE EXTERIOR LENGTH 36' 10"



326 BHSLE EXTERIOR LENGTH 36' 10"

VAULTED BED STORAGE

MORE STORAGE THAN EVER BEFORE

Pack up and go! Easy to lift vaulted queen bed storage includes drawers and under drawer shoe cubbies. (Not available on slide out beds and SE models.)



QUICK CONNECT GAS GRIDDLE

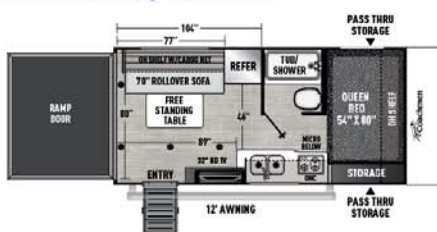
Sidewall mount table and 24" x 48" outdoor table included on all Ultra Lite and Liberty/Maple Leaf travel trailers.



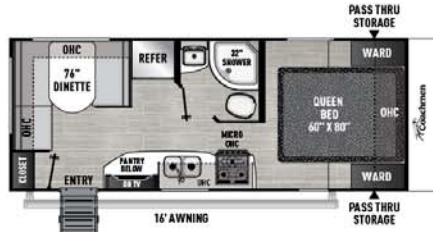
SELECT EDITION

Freedom Express has combined our most popular features and floorplans to create these Select Edition value added models. They come complete with private master bedrooms, seamless kitchen counters, entertainment towers and our signature vacuum bonded Azdel sidewall construction.

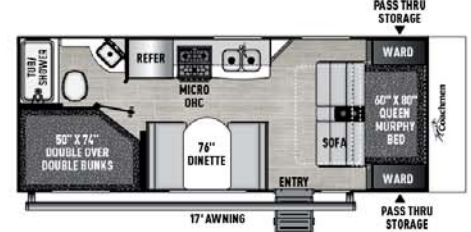
Select Toy Hauler



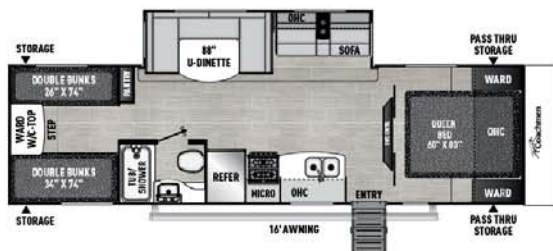
17 BLSE EXTERIOR LENGTH 20' 3"



20 SE EXTERIOR LENGTH 24' 6"



22 SE EXTERIOR LENGTH 24' 10"



29 SE EXTERIOR LENGTH 33' 4"



31 SE EXTERIOR LENGTH 35' 6"



LIBERTY/MAPLE LEAF TRAVEL TRAILERS	324 RLSLE	326 BHSLE
UVW (LBS.)	8,624	8,396
HITCH WEIGHT (LBS.)	1,112	1,156
CARRYING CAPACITY (LBS.)	1,876	2,104
EXT. LENGTH (INCL. BUMPER TO HITCH)	36' 10"	36' 10"
EXT. HEIGHT (INCL. A/C)	11' 4"	11' 3"
INT. HEIGHT (COACH)	81"	81"
AWNING LENGTH	10', 12'	11', 8'
WATER CAP. (GAL.) FRESH/GREY/WASTE	50/35/35	50/70/70
TIRE SIZE	ST225/75R15E	ST225/75R15E

SELECT EDITION	17 BLSE TOY HAULER	20 SE	22 SE	29 SE	31 SE
UVW (LBS.)	3,596	4,160	4,338	6,218	7,172
HITCH WEIGHT (LBS.)	508	512	576	642	884
CARRYING CAPACITY (LBS.)	2,304	1,840	1,840	2,782	2,328
EXT. LENGTH (INCL. BUMPER TO HITCH)	20' 3"	24' 6"	24' 10"	33' 4"	35' 6"
EXT. HEIGHT (INCL. A/C)	10' 8"	10' 7"	10' 8"	11' 1"	11' 3"
INT. HEIGHT (COACH)	81"	81"	81"	81"	81"
AWNING LENGTH	12'	16'	17'	16'	16'
WATER CAP. (GAL.) FRESH/GREY/WASTE	50/35/35	50/35/35	50/35/35	50/35/35	50/35/35
TIRE SIZE	ST205/75R14D	ST205/75R14D	ST205/75R14D	ST225/75R15E	ST225/75R15E

SPECIFICATIONS

FREEDOM VALUE PACKAGE

MANDATORY - ULTRA LITE, LIBERTY/MAPLE LEAF

3/4 Gel Coated Fiberglass Cap w/ Automotive Glass Windshield	3" Aluminum Framed Floor with 5/8" Tongue & Groove Decking
Alumicage Construction	Back-Up Camera Prep
Vacuum Bonded Walls with Azdel Composite (Interior and Exterior)	Freedom Vaulted Bed Storage (N/A 226, 238, 259, 324 & Select Edition)
Aluminum Wheels	Front Rock Guard
Spare Tire	Pet Leash/Bottle Opener
Detachable Power Cord	Amber LED Entry Light
USB Ports	6 Gal. DSI Gas/Electric Water Heater
Tinted Safety Glass Windows	15K BTU Roof Air Conditioner
Aluminum Solid Steps	AM/FM/HDMI/USB/Bluetooth Stereo
E-Z Lube® Axles	Two Exterior/Four Interior Speakers
Spread Axle Design (N/A 192)	Smart TV
Heated/Enclosed Underbelly	LED Interior Lighting
Full Walk-On Roof	Night Shades
Tufflex PVC Roofing	Wear-Resistant Vinyl Flooring Throughout
Exterior Shower	Hidden Hinge Cabinetry
Winterize Ready Kit	Kitchen Backsplash
Black Tank Flush	Stainless Steel Sink
Microwave	Ducted Furnace and A/C (N/A 192)
Freedom Solar Ready	Oven with 3-Burner Stove and Glass Top
Keyed-A-Like	Double Door Refrigerator
24" x 48" Outdoor Table	U-Tensil Drawer (N/A 326)
Bamboo Cutting Board with Drying Rack Sink Covers	2" Rear Accessory Hitch Prep. 300 lb. Weight Capacity (Excludes 17BLSE)
Exterior TV Hook-Up	Power Awning with LED Light Strip
Magnetic Freedom Latch Compartment Doors	Galvanized Metal Camp Kitchen with Pull-Out U-Tensil Drawer
Battery Disconnect	Friction Hinge Entry Door
Skylight/Power Vent in Bath	81" Interior Height
Porcelain Toilet	RVIA
60" x 80" Queen Mattress with Cover (N/A 259 King - 72" x 80")	AIR 360+ Amplified Omnidirectional VHF/UHF, FM & WiFi Antenna w/optional 4G LTE Gateway Add-On

ULTRA LITE EXPRESS PACKAGE (REQUIRED)

Power Tongue Jack | Griddle and Side Table | 8 Cu. Ft. Gas/Electric Refrigerator

ULTRA LITE OPTIONS

50 Amp Service with Second Air Conditioner Prep	Second 15K BTU Roof Air Conditioner Installed
Power Stabilizer Jacks (N/A 192)	Hide-A-Bed Sofa (252, 259, 274, 288, 292, 294, 298)
12V 10 Cu. Ft. Refrigerator	Theater Seats (252, 259, 274, 288, 292, 294, 298)
MEP Fee (REPLACES RVIA)	200 Watt Solar Panel & 30 Amp MPPT Control Charger
CSA Canadian Compliance	Murphy Bed (226, 238 required)

LIBERTY/MAPLE LEAF UPGRADED PACKAGE

LIBERTY/MAPLE LEAF EDITIONS INCLUDE THE FREEDOM VALUE PACKAGE, PLUS THESE UPGRADES. (LIBERTY/MAPLE LEAF ONLY)

3/4 Gel Coated Fiberglass Cap with Automotive Glass Windshield	Designer Bedspread with Matching Pillows	Two Full-Depth Gliding Drawers under Dinette
Power Stabilizer System	Pull-Out Faucet	LCI ONEControl® Smart Phone App
Liberty/Maple Leaf Graphics	Residential Light over Dinette	Roller Shades
Slam Latch Baggage Doors	Hide-A-Bed Sofa	Electric Fireplace
Enclosed/Heated Gate Valves	Fantastic Fan with Remote	Central Control Panel
Security Light	Solid Surface Kitchen Countertop	

LIBERTY/MAPLE LEAF EXPRESS PACK (REQUIRED)

Frameless Windows	50 Amp Service with Second Air Conditioner Prep	Griddle and Side Table
-------------------	---	------------------------

LIBERTY/MAPLE LEAF OPTIONS

Second 15K BTU Roof Air Conditioner Installed	Theater Seats (IPO Hide-a-Bed Sofa)	200 Watt Solar Panel and 30 Amp MPPT Control Charger
12V 10 Cu. Ft. Refrigerator	CSA Canadian Compliance - Inc. CSA	MEP Fee (REPLACES RVIA)

SELECT EDITION PACKAGE

Alumicage Construction	Ducted Furnace and Air Conditioner (N/A 17BLSE, 20SE)	60" x 80" Queen Mattress with Cover (N/A 17BLSE - 54" x 80")
Vacuum Bonded Walls with Azdel Composite (Interior and Exterior)	AM/FM/HDMI/USB/Bluetooth Stereo	Oven with 3-Burner Cooktop (N/A 17BLSE)
Radial Tires with Silver Steel Wheels	Freedom Solar Ready	Double Door Refrigerator
Spare Tire	Interior/Exterior Speakers	U-Tensil Drawer (N/A 17BL)
Detachable Power Cord	Pet Leash and Bottle Opener	Microwave
Power Awning	Tufflex PVC Roofing	USB Ports
Tinted Safety Glass Windows	6 Gal. DSI Gas/Electric Water Heater	Bath Skylight
Front Diamond Plate	LED Interior Lighting	Friction Hinge Entry Door
E-Z Lube® Axles	Night Shades	RVIA
Heated/Enclosed Underbelly	Wear-Resistant Vinyl Flooring Throughout	81" Interior Height
Full Walk-On Roof	Hidden Hinge Cabinetry	Winterize Ready Kit
AIR 360+ Amplified Omnidirectional VHF/UHF, FM and WiFi Antenna with optional 4G LTE Gateway Add-On		Stainless Steel Sink

LEISURE PACKAGE

32" TV	Power Tongue Jack	LED Awning Light
--------	-------------------	------------------

ADDITIONAL OPTIONS

50 Amp Service with Second Air Conditioner Prep	12V 10 Cu. Ft. Refrigerator	CSA Canadian Compliance - Inc. CSA
200 Watt Solar Panel and 30 Amp MPPT Control Charger	15K BTU Roof Air Conditioner	MEP Fee (REPLACES RVIA)
Second 15K BTU Roof Air Conditioner Installed		

GVWR (Gross Vehicle Weight Rating) - is the maximum permissible weight of the unit when fully loaded. It includes all weights, inclusive of all fluids, occupants, cargo, optional equipment and accessories. For safety and product performance do NOT exceed the GVWR.

GCWR (Gross Combined Weight Rating) - Is the maximum permissible loaded weight of your motor home and any towed trailer or towed vehicle. Actual GCWR of this vehicle may be limited by the sum of the GVWR and the installed hitch receiver maximum capacity rating; see hitch rating label for detail.

GAWR (Gross Axle Weight Rating) - is the maximum permissible weight, including cargo, fluids, optional equipment and accessories that can be safely supported by each axle.

UVW (Unloaded Vehicle Weight)* - is the typical weight of the unit as manufactured at the factory. It includes all weight at the unit's axle(s), including full fuel, all fluids and LP Gas. The UVW does not include cargo, fresh potable water, additional optional equipment or dealer installed accessories.

*Estimated Average based on standard build optional equipment.

CCC (Cargo Carrying Capacity)** - is the amount of weight available for fresh potable water, cargo, passengers, additional optional equipment and accessories. CCC is equal to GVWR minus UVW. Available CCC should accommodate fresh potable water (8.3 lbs per gallon). Before filling the fresh water tank, empty the black and gray tanks to provide for more cargo capacity.

**Estimated average based on standard build optional equipment.

Each Forest River RV is weighed at the manufacturing facility prior to shipping. A label identifying the unloaded vehicle weight of the actual unit and the cargo carrying capacity is applied to every Forest River RV prior to leaving our facilities.

The load capacity of your unit is designated by weight, not by volume, so you cannot necessarily use all available space when loading your unit. Actual towing capacity is dependent upon your particular loading and towing circumstances, which includes the GVWR, GAWR and GCWR as well as adequate trailer brakes. Please refer to the Operator's Manual of your vehicle for further towing information.

All information contained in this brochure is believed to be accurate at the time of publication. However, during the model year, it may be necessary to make revisions and Forest River, Inc., reserves the right to make all such changes without notice, including prices, colors, materials, equipment and specifications as well as the addition of new models and the discontinuance of models shown in this brochure. Therefore, please consult with your Forest River dealer and confirm the existence of any materials, design or specifications that are material to your purchase decision. ©2023 Freedom Express by Coachmen, a Division of Forest River, Inc., a Berkshire Hathaway company. All Rights Reserved. 8/23.

YOUR COACHMEN FREEDOM EXPRESS DEALER



**24/7 EMERGENCY
ROADSIDE ASSISTANCE
WITH VEHICLE PURCHASE***

TOWING
JUMP-STARTS
TIRE CHANGES
FLUID DELIVERY
LOCKOUT
SERVICE

WINCH-OUT
MOBILE MECHANIC
TECHNICAL
SUPPORT
DEALER LOCATOR
SERVICES

SAFERIDERV
MOTOR CLUB

*VALID FOR 1 YEAR FROM DATE OF PURCHASE

WWW.COACHMENCAMPS.ORG



Fighting Cancer Making Memories



COA
COACHMEN OWNERS ASSOCIATION
FREE MEMBERSHIP
www.coachmenowners.com



Learn More
Scan the barcode using
a QR Reader on your
smart phone to learn
more about Forest River.



A Berkshire Hathaway company.

CUSTOMER SATISFACTION



BUY LOCAL
Forest River

www.ForestRiverBuyLocal.com



Coachmen
Recreational Vehicles
A division of Forest River, Inc.



423 N. Main Street | P.O. Box 30
Middlebury, IN 46540 | 800-353-7383
coachmenrv.com/freedom-express