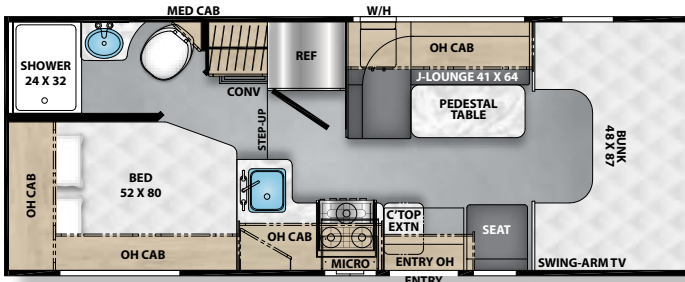
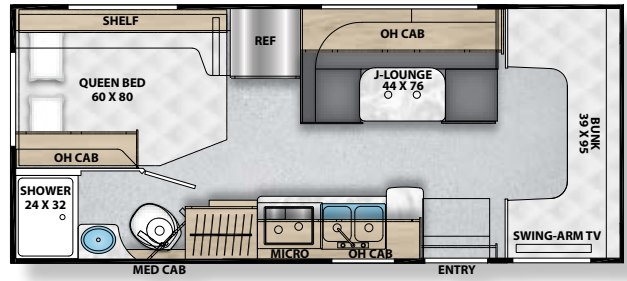


# CROSS TRAIL

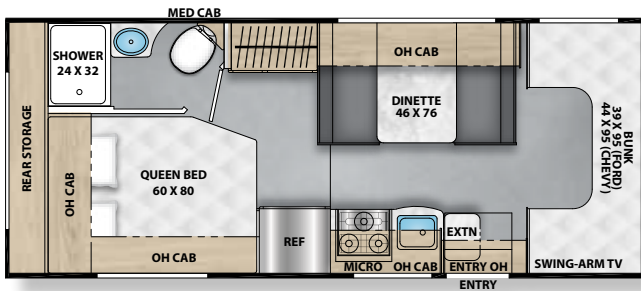
# XL



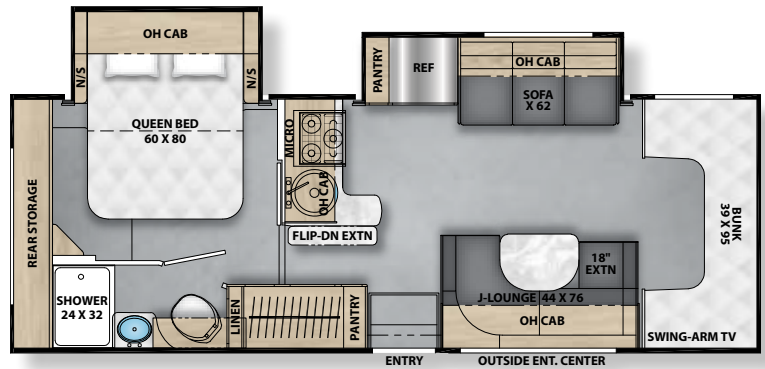
**20CB**



**22XG**



**23XG**



**26XG**

## KEY FEATURES

- Spacious Floorplans with Maximized Storage Space
- Partial Paint with Grey 4,000 Lamilux Fiberglass Sidewalls (E-Series Only)
- NPS 4.5kw Generator
- Exterior TV Prep with Bracket
- Roof Solar Prep
- Starlink Prep
- Azdel Composite Sidewall Material
- Shortened Front Nose Overhang
- Black Armed Power Awning
- Exterior Safety Grab Handle
- Rear Ladder Prep
- Heated Holding tanks
- Thermofoil Countertops
- 32" Coach TV with Removable Bracket for Exterior
- Kitchen Flip Up Countertop Extension
- Tankless Water Heater
- Upgraded Mattress
- Cabover Child Safety Net and Ladder

# CROSS TRAIL XL SPECIFICATIONS

	20GB	22XG	23XG	26XG
CHASSIS	FORD TRANSIT T350 AWD	FORD E350	FORD E350	FORD E450
ENGINE	V6 3.5L EcoBoost	V8 7.3L	V8 7.3L	V8 7.3L
HORSE POWER	310	325	325	325
TORQUE	400	450	450	450
WHEEL BASE	156"	158"	158"	190"
GVWR (LBS.)	11,000	12,500	12,500	14,500
GCWR (LBS.)	15,000	18,500	18,500	22,000
UVW (APPROX. LBS.)	8,058	9,441	9,721	11,715
GAWR FRONT (LBS.)	4,630	5,000	5,000	5,000
GAWR REAR (LBS.)	7,275	8,500	8,500	9,600
INTERIOR HEIGHT	6' 9"	6'11"	6' 11"	6' 11"
EXTERIOR WIDTH	7' 7"	8' 4"	8' 4"	8' 4"
EXTERIOR HEIGHT (WITH A/C)	10' 4"	10' 10"	10' 10"	10' 11"
EXTERIOR LENGTH (WITH HITCH)	23' 11"	24' 3"	25' 8"	29' 4"
HITCH WEIGHT (LBS.)	4,000	5,000	5,000	7,500
FUEL CAPACITY (GAL.)	31	32	32	32
LP CAPACITY (LBS.)	86	86	86	86
FRESH WATER CAPACITY (GAL.)	38	41	50	50
WATER HEATER CAPACITY (GAL.)	TANKLESS	TANKLESS	TANKLESS	TANKLESS
GREY TANK CAPACITY (GAL.)	13	28	32	31
BLACK TANK CAPACITY (GAL.)	21	31	31	31
EXTERIOR STORAGE (CU. FT.)	TBD	47	146	124
AWNING LENGTH	14'	15'	16'	16'

**GVWR (Gross Vehicle Weight Rating)** is the maximum permissible weight of the unit when fully loaded. It includes all weights, inclusive of all fluids, occupants, cargo, optional equipment and accessories. For safety and product performance do NOT exceed the GVWR.

**GCWR (Gross Combined Weight Rating)** is the maximum permissible loaded weight of your motor home and any towed trailer or towed vehicle. Actual GCWR of this vehicle may be limited by the sum of the GVWR and the installed hitch receiver maximum capacity rating; see hitch rating label for detail.

**GAWR (Gross Axle Weight Rating)** is the maximum permissible weight, including cargo, fluids, optional equipment and accessories that can be safely supported by each axle.

**UVW (Unloaded Vehicle Weight)\*** is the typical weight of the unit as manufactured at the factory. It includes all weight at the unit's axle(s), including full fuel, all fluids and LP Gas. The UVW does not include cargo, fresh potable water, additional optional equipment or dealer installed accessories.

\*Estimated Average based on standard build optional equipment.

**CCC (Cargo Carrying Capacity)\*\*** is the amount of weight available for fresh potable water, cargo, passengers, additional optional equipment and accessories. CCC is equal to GVWR minus UVW. Available CCC should accommodate fresh potable water (8.3 lbs per gallon). Before filling the fresh water tank, empty the black and gray tanks to provide for more cargo capacity.

\*\* Estimated average based on standard build optional equipment

Each Coachmen motorhome is weighed at the manufacturing facility prior to shipping. A label identifying the unloaded vehicle weight of the actual unit and the cargo carrying capacity is applied to every Coachmen motorhome prior to leaving our facilities.

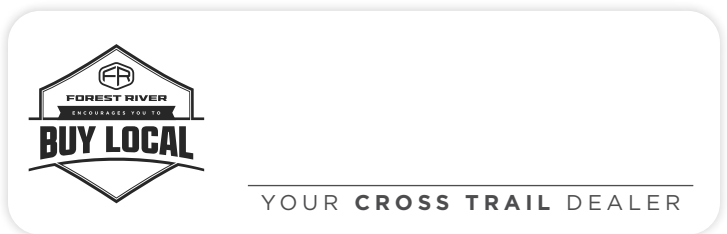
The load capacity of your unit is designated by weight, not by volume, so you cannot necessarily use all available space when loading your unit.

Actual towing capacity is dependent upon your particular loading and towing circumstances, which includes the GVWR, GAWR and GCWR as well as adequate trailer brakes. Please refer to the Operator's Manual of your vehicle for further towing information.



423 N. Main Street  
P.O. Box 30  
Middlebury, IN 46540

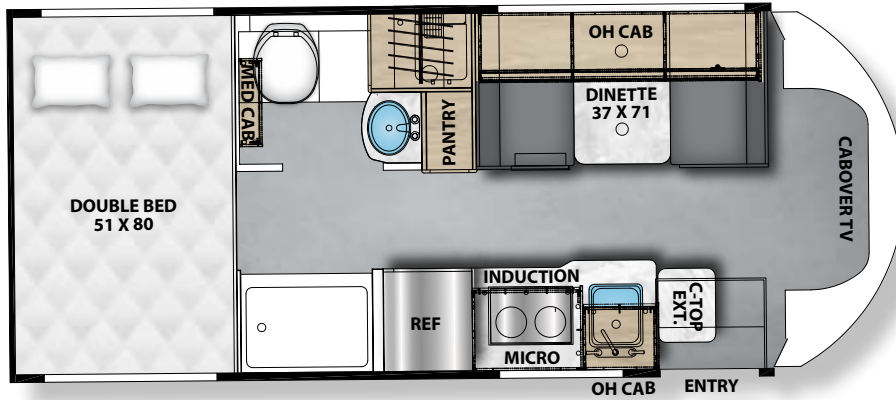
To learn more about Coachmen RV and our products and see how Coachmen is making the easy life easier, call us toll free at **(800) 353-7383**, or visit [www.coachmenrv.com](http://www.coachmenrv.com)



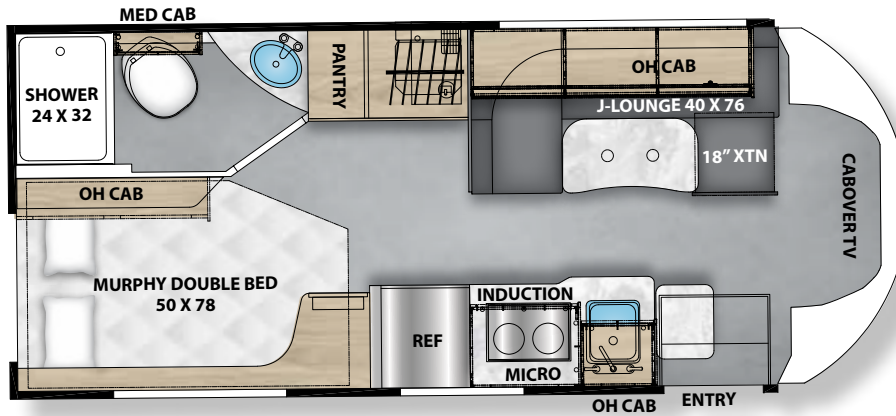


## TRANSIT CHASSIS

20XG



21XG



### KEY FEATURES

#### EV PACKAGE

- ECOFLOW Power Kits
- Standard 416AMP/HR Lithium Battery
  - Optional: Dual 416 AMP/HR Lithium Batteries
- 3,600W Inverter
- Gen Prep (Standard)
  - Optional: 2-Way LP and Gas Generator

- Ford Transit AWD Chassis
- Dual 250 AMP Alternator
- Induction Cooktop
- Convection Microwave with Airfryer

#### XTREME PACKAGE

- Full Body Paint Optional
- Van Compass 2" Suspension Lift
- Falcon Racing Shocks
- All Terrain Tires
- Black Out Aluminum Rims
- Front Bumper Brush Guard with LED Lights
- Rigid Running Boards
- XTREME Graphics Package
- Induction Cooktop

# CROSS TRAIL EV XTREME SPECIFICATIONS

	20XG	21XG
CHASSIS	FORD TRANSIT T350 AWD	FORD TRANSIT T350 AWD
ENGINE	V6 3.5L EcoBoost	V6 3.5L EcoBoost
HORSE POWER	310	310
TORQUE	400	400
WHEEL BASE	156"	156"
GVWR (LBS.)	11,000	11,000
GCWR (LBS.)	15,000	15,000
UVW (APPROX. LBS.)	8,510	8,632
GAWR FRONT (LBS.)	4,630	4,630
GAWR REAR (LBS.)	7,275	7,275
INTERIOR HEIGHT	6' 7"	6' 7"
EXTERIOR WIDTH	7' 7"	7' 7"
EXTERIOR HEIGHT (WITH A/C)	10' 4"	10' 4"
EXTERIOR LENGTH (WITH HITCH)	24' 2"	24' 2"
HITCH WEIGHT (LBS.)	4,000	4,000
FUEL CAPACITY (GAL.)	32	32
LP CAPACITY (LBS.)	86	86
FRESH WATER CAPACITY (GAL.)	30	29
WATER HEATER CAPACITY (GAL.)	TANKLESS	TANKLESS
GREY TANK CAPACITY (GAL.)	27	59
BLACK TANK CAPACITY (GAL.)	28	28
EXTERIOR STORAGE (CU. FT.)	130	47
AWNING LENGTH	14' ARMLESS	14' ARMLESS

**GVWR (Gross Vehicle Weight Rating)** is the maximum permissible weight of the unit when fully loaded. It includes all weights, inclusive of all fluids, occupants, cargo, optional equipment and accessories. For safety and product performance do NOT exceed the GVWR.

**GCWR (Gross Combined Weight Rating)** is the maximum permissible loaded weight of your motor home and any towed trailer or towed vehicle. Actual GCWR of this vehicle may be limited by the sum of the GVWR and the installed hitch receiver maximum capacity rating; see hitch rating label for detail.

**GAWR (Gross Axle Weight Rating)** is the maximum permissible weight, including cargo, fluids, optional equipment and accessories that can be safely supported by each axle.

**UVW (Unloaded Vehicle Weight)\*** is the typical weight of the unit as manufactured at the factory. It includes all weight at the unit's axle(s), including full fuel, all fluids and LP Gas. The UVW does not include cargo, fresh potable water, additional optional equipment or dealer installed accessories.

\*Estimated Average based on standard build optional equipment.

**CCC (Cargo Carrying Capacity)\*\*** is the amount of weight available for fresh potable water, cargo, passengers, additional optional equipment and accessories. CCC is equal to GVWR minus UVW. Available CCC should accommodate fresh potable water (8.3 lbs per gallon). Before filling the fresh water tank, empty the black and gray tanks to provide for more cargo capacity.

\*\* Estimated average based on standard build optional equipment

Each Coachmen motorhome is weighed at the manufacturing facility prior to shipping. A label identifying the unloaded vehicle weight of the actual unit and the cargo carrying capacity is applied to every Coachmen motorhome prior to leaving our facilities.

The load capacity of your unit is designated by weight, not by volume, so you cannot necessarily use all available space when loading your unit.

Actual towing capacity is dependent upon your particular loading and towing circumstances, which includes the GVWR, GAWR and GCWR as well as adequate trailer brakes. Please refer to the Operator's Manual of your vehicle for further towing information.



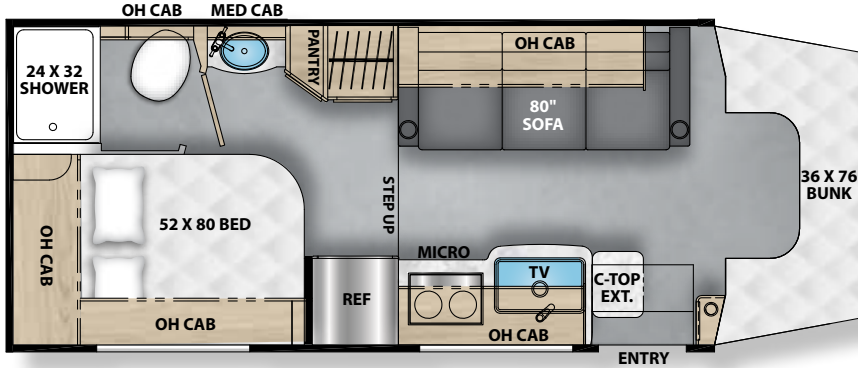
423 N. Main Street  
P.O. Box 30  
Middlebury, IN 46540

To learn more about Coachmen RV and our products and see how Coachmen is making the easy life easier, call us toll free at **(800) 353-7383**, or visit [www.coachmenrv.com](http://www.coachmenrv.com)

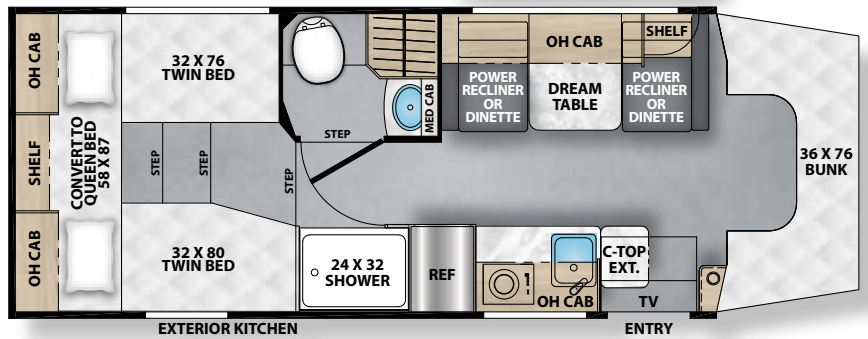
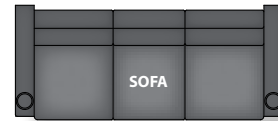


# CROSS TRAIL EV

## SPRINTER CHASSIS



24FL



26TB

### KEY FEATURES

- Mercedes Sprinter 3500 AWD Chassis
  - 4-Cylinder Diesel High Output Engine
  - 9G TRONIC Automatic Transmission
  - Adaptive Cruise Control and Lane Assist
  - Apple Carplay/Android Auto
- ECOFLOW Power Kits
- Standard: 416 AMP/HR Lithium Battery
  - Optional: Dual 416 AMP/HR Lithium Batteries

- 3,600W Inverter
- Gen Prep (Standard)
  - Optional: 2-Way LP and Gas Generator
- Dual 250 AMP Alternator
- Roof Solar Prep
- Azdel Substrate with Aluminum Framing
- Induction Cooktop
- Convection Microwave
- Heated Tank Pads

### CROSS TRAIL EV CANYON PACKAGE (SPRINTER ONLY)

- Silver Cab Paint
- 5,000 lb. Towing Hitch
- Black Front Bumper with Running Lights
- Black Aluminum Rims
- Cabover Bunk Sleeper with Window and Power Shade

# CROSS TRAIL EV SPRINTER SPECIFICATIONS

	24FL	26TB
CHASSIS	MERCEDES SPRINTER	MERCEDES SPRINTER
ENGINE	4 CYL. DIESEL	4 CYL. DIESEL
HORSE POWER	208	208
TORQUE	322	322
WHEEL BASE	170"	170"
GVWR (LBS.)	11,030	11,030
GCWR (LBS.)	15,250	15,250
UVW (APPROX. LBS.)	9,202	TBD
GAWR FRONT (LBS.)	4,410	4,410
GAWR REAR (LBS.)	7,720	7,720
INTERIOR HEIGHT	6' 9"	6' 9"
EXTERIOR WIDTH	7' 8"	7' 8"
EXTERIOR HEIGHT (WITH A/C)	11' 7"	11' 7"
EXTERIOR LENGTH (WITH HITCH)	24' 2"	26' 2"
HITCH WEIGHT (LBS.)	5,000	5,000
FUEL CAPACITY (GAL.)	26	26
LP CAPACITY (LBS.)	86	86
FRESH WATER CAPACITY (GAL.)	29	50
WATER HEATER CAPACITY (GAL.)	TANKLESS	TANKLESS
GREY TANK CAPACITY (GAL.)	32	53
BLACK TANK CAPACITY (GAL.)	35	28
EXTERIOR STORAGE (CU. FT.)	46	107
AWNING LENGTH	14' ARMLESS	14' ARMLESS

**GVWR (Gross Vehicle Weight Rating)** is the maximum permissible weight of the unit when fully loaded. It includes all weights, inclusive of all fluids, occupants, cargo, optional equipment and accessories. For safety and product performance do NOT exceed the GVWR.

**GCWR (Gross Combined Weight Rating)** is the maximum permissible loaded weight of your motor home and any towed trailer or towed vehicle. Actual GCWR of this vehicle may be limited by the sum of the GVWR and the installed hitch receiver maximum capacity rating; see hitch rating label for detail.

**GAWR (Gross Axle Weight Rating)** is the maximum permissible weight, including cargo, fluids, optional equipment and accessories that can be safely supported by each axle.

**UVW (Unloaded Vehicle Weight)\*** is the typical weight of the unit as manufactured at the factory. It includes all weight at the unit's axle(s), including full fuel, all fluids and LP Gas. The UVW does not include cargo, fresh potable water, additional optional equipment or dealer installed accessories.

\*Estimated Average based on standard build optional equipment.

**CCC (Cargo Carrying Capacity)\*\*** is the amount of weight available for fresh potable water, cargo, passengers, additional optional equipment and accessories. CCC is equal to GVWR minus UVW. Available CCC should accommodate fresh potable water (8.3 lbs per gallon). Before filling the fresh water tank, empty the black and gray tanks to provide for more cargo capacity.

\*\* Estimated average based on standard build optional equipment

Each Coachmen motorhome is weighed at the manufacturing facility prior to shipping. A label identifying the unloaded vehicle weight of the actual unit and the cargo carrying capacity is applied to every Coachmen motorhome prior to leaving our facilities.

The load capacity of your unit is designated by weight, not by volume, so you cannot necessarily use all available space when loading your unit.

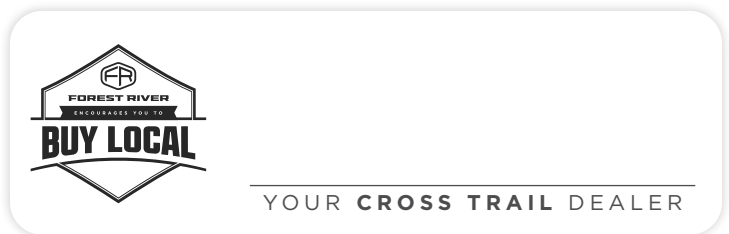
Actual towing capacity is dependent upon your particular loading and towing circumstances, which includes the GVWR, GAWR and GCWR as well as adequate trailer brakes. Please refer to the Operator's Manual of your vehicle for further towing information.

# CROSS TRAIL EV



423 N. Main Street  
P.O. Box 30  
Middlebury, IN 46540

To learn more about Coachmen RV and our products and see how Coachmen is making the easy life easier, call us toll free at **(800) 353-7383**, or visit [www.coachmenrv.com](http://www.coachmenrv.com)

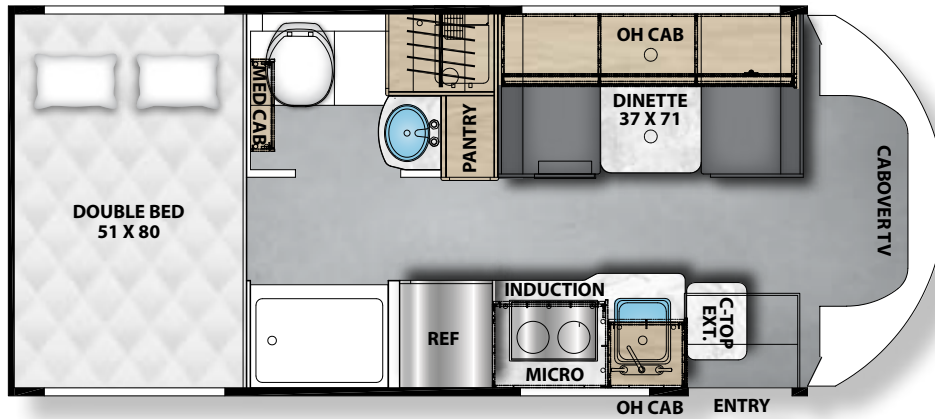




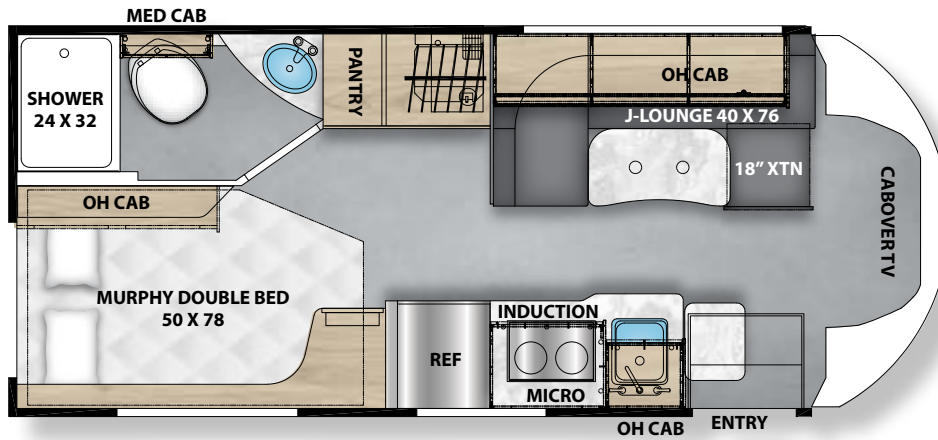
# CROSS TRAIL EV

## TRANSIT CHASSIS

20XG



21XG



### KEY FEATURES

- **Ford Transit AWD Chassis**
  - 3.5L Ecoboost Engine
  - 10-Speed Transmission
  - Adaptive Cruise Control & Lane Assist
  - Apple Carplay/Android Auto
- **ECOFLOW Power Kits**
- **Standard 416AMP/HR Lithium Battery**
  - Optional: Dual 416AMP/HR Lithium Batteries
- **3,600W Inverter**
- **Gen Prep (Standard)**
  - Optional: 2-Way LP & Gas Generator
- **Dual 250 Amp Alternator**
- **Azdel Substrate with Aluminum Framing**
- **Induction Cooktop**
- **Convection Microwave**

# CROSS TRAIL EV SPECIFICATIONS

	20XG	21XG
CHASSIS	FORD TRANSIT T350 AWD	FORD TRANSIT T350 AWD
ENGINE	V6 3.5L EcoBoost	V6 3.5L EcoBoost
HORSE POWER	310	310
TORQUE	400	400
WHEEL BASE	156"	156"
GVWR (LBS.)	11,000	11,000
GCWR (LBS.)	15,000	15,000
UVW (APPROX. LBS.)	8,510	8,632
GAWR FRONT (LBS.)	4,630	4,630
GAWR REAR (LBS.)	7,275	7,275
INTERIOR HEIGHT	6' 7"	6' 7"
EXTERIOR WIDTH	7' 7"	7' 7"
EXTERIOR HEIGHT (WITH A/C)	10' 4"	10' 4"
EXTERIOR LENGTH (WITH HITCH)	24' 2"	24' 2"
HITCH WEIGHT (LBS.)	4,000	4,000
FUEL CAPACITY (GAL.)	32	32
LP CAPACITY (LBS.)	86	86
FRESH WATER CAPACITY (GAL.)	30	29
WATER HEATER CAPACITY (GAL.)	TANKLESS	TANKLESS
GREY TANK CAPACITY (GAL.)	27	59
BLACK TANK CAPACITY (GAL.)	28	28
EXTERIOR STORAGE (CU. FT.)	130	47
AWNING LENGTH	14' ARMLESS	14' ARMLESS

**GVWR (Gross Vehicle Weight Rating)** is the maximum permissible weight of the unit when fully loaded. It includes all weights, inclusive of all fluids, occupants, cargo, optional equipment and accessories. For safety and product performance do NOT exceed the GVWR.

**GCWR (Gross Combined Weight Rating)** is the maximum permissible loaded weight of your motor home and any towed trailer or towed vehicle. Actual GCWR of this vehicle may be limited by the sum of the GVWR and the installed hitch receiver maximum capacity rating; see hitch rating label for detail.

**GAWR (Gross Axle Weight Rating)** is the maximum permissible weight, including cargo, fluids, optional equipment and accessories that can be safely supported by each axle.

**UVW (Unloaded Vehicle Weight)\*** is the typical weight of the unit as manufactured at the factory. It includes all weight at the unit's axle(s), including full fuel, all fluids and LP Gas. The UVW does not include cargo, fresh potable water, additional optional equipment or dealer installed accessories.

\*Estimated Average based on standard build optional equipment.

**CCC (Cargo Carrying Capacity)\*\*** is the amount of weight available for fresh potable water, cargo, passengers, additional optional equipment and accessories. CCC is equal to GVWR minus UVW. Available CCC should accommodate fresh potable water (8.3 lbs per gallon). Before filling the fresh water tank, empty the black and gray tanks to provide for more cargo capacity.

\*\* Estimated average based on standard build optional equipment

Each Coachmen motorhome is weighed at the manufacturing facility prior to shipping. A label identifying the unloaded vehicle weight of the actual unit and the cargo carrying capacity is applied to every Coachmen motorhome prior to leaving our facilities.

The load capacity of your unit is designated by weight, not by volume, so you cannot necessarily use all available space when loading your unit.

Actual towing capacity is dependent upon your particular loading and towing circumstances, which includes the GVWR, GAWR and GCWR as well as adequate trailer brakes. Please refer to the Operator's Manual of your vehicle for further towing information.



423 N. Main Street  
P.O. Box 30  
Middlebury, IN 46540

To learn more about Coachmen RV and our products and see how Coachmen is making the easy life easier, call us toll free at **(800) 353-7383**, or visit [www.coachmenrv.com](http://www.coachmenrv.com)

**Learn More:**  
Scan this barcode using a QR reader on your smart phone to learn more about Forest River.



YOUR CROSS TRAIL DEALER