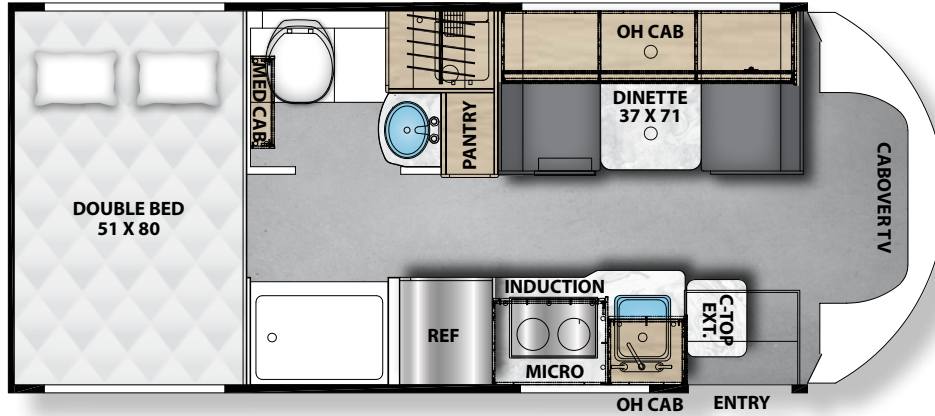




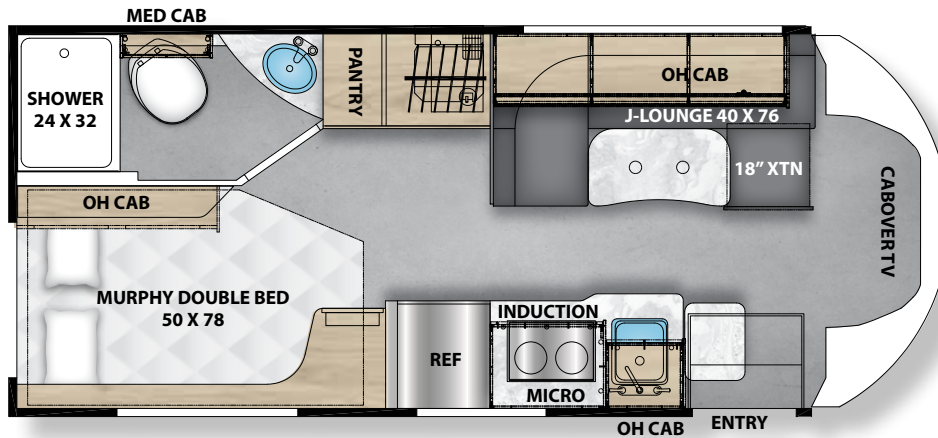
CROSS TRAIL EV

TRANSIT CHASSIS

20XG



21XG



KEY FEATURES

- **Ford Transit AWD Chassis**
 - 3.5L EcoBoost Engine
 - 10-Speed Transmission
 - Adaptive Cruise Control & Lane Assist
 - Apple Carplay/Android Auto
- **ECOFLOW Power Kits**
- **Standard 416AMP/HR Lithium Battery**
 - Optional: Dual 416AMP/HR Lithium Batteries
- **3,600W Inverter**
- **Gen Prep (Standard)**
 - Optional: 2-Way LP & Gas Generator
- **Dual 250 Amp Alternator**
- **Azdel Substrate with Aluminum Framing**
- **Induction Cooktop**
- **Convection Microwave**

CROSS TRAIL EV SPECIFICATIONS

	20XG	21XG
CHASSIS	FORD TRANSIT T350 AWD	FORD TRANSIT T350 AWD
ENGINE	V6 3.5L EcoBoost	V6 3.5L EcoBoost
HORSE POWER	310	310
TORQUE	400	400
WHEEL BASE	156"	156"
GVWR (LBS.)	11,000	11,000
GCWR (LBS.)	15,000	15,000
UVW (APPROX. LBS.)	8,510	8,632
GAWR FRONT (LBS.)	4,630	4,630
GAWR REAR (LBS.)	7,275	7,275
INTERIOR HEIGHT	6' 7"	6' 7"
EXTERIOR WIDTH	7' 7"	7' 7"
EXTERIOR HEIGHT (WITH A/C)	10' 4"	10' 4"
EXTERIOR LENGTH (WITH HITCH)	24' 2"	24' 2"
HITCH WEIGHT (LBS.)	4,000	4,000
FUEL CAPACITY (GAL.)	32	32
LP CAPACITY (LBS.)	86	86
FRESH WATER CAPACITY (GAL.)	30	29
WATER HEATER CAPACITY (GAL.)	TANKLESS	TANKLESS
GREY TANK CAPACITY (GAL.)	27	59
BLACK TANK CAPACITY (GAL.)	28	28
EXTERIOR STORAGE (CU. FT.)	130	47
AWNING LENGTH	14' ARMLESS	14' ARMLESS

GVWR (Gross Vehicle Weight Rating) is the maximum permissible weight of the unit when fully loaded. It includes all weights, inclusive of all fluids, occupants, cargo, optional equipment and accessories. For safety and product performance do NOT exceed the GVWR.

GCWR (Gross Combined Weight Rating) is the maximum permissible loaded weight of your motor home and any towed trailer or towed vehicle. Actual GCWR of this vehicle may be limited by the sum of the GVWR and the installed hitch receiver maximum capacity rating; see hitch rating label for detail.

GAWR (Gross Axle Weight Rating) is the maximum permissible weight, including cargo, fluids, optional equipment and accessories that can be safely supported by each axle.

UVW (Unloaded Vehicle Weight)* is the typical weight of the unit as manufactured at the factory. It includes all weight at the unit's axle(s), including full fuel, all fluids and LP Gas. The UVW does not include cargo, fresh potable water, additional optional equipment or dealer installed accessories.

*Estimated Average based on standard build optional equipment.

CCC (Cargo Carrying Capacity)** is the amount of weight available for fresh potable water, cargo, passengers, additional optional equipment and accessories. CCC is equal to GVWR minus UVW. Available CCC should accommodate fresh potable water (8.3 lbs per gallon). Before filling the fresh water tank, empty the black and gray tanks to provide for more cargo capacity.

** Estimated average based on standard build optional equipment

Each Coachmen motorhome is weighed at the manufacturing facility prior to shipping. A label identifying the unloaded vehicle weight of the actual unit and the cargo carrying capacity is applied to every Coachmen motorhome prior to leaving our facilities.

The load capacity of your unit is designated by weight, not by volume, so you cannot necessarily use all available space when loading your unit.

Actual towing capacity is dependent upon your particular loading and towing circumstances, which includes the GVWR, GAWR and GCWR as well as adequate trailer brakes. Please refer to the Operator's Manual of your vehicle for further towing information.



423 N. Main Street
P.O. Box 30
Middlebury, IN 46540

To learn more about Coachmen RV and our products and see how Coachmen is making the easy life easier, call us toll free at **(800) 353-7383**, or visit www.coachmenrv.com

Learn More:
Scan this barcode using a QR reader on your smart phone to learn more about Forest River.



YOUR CROSS TRAIL DEALER