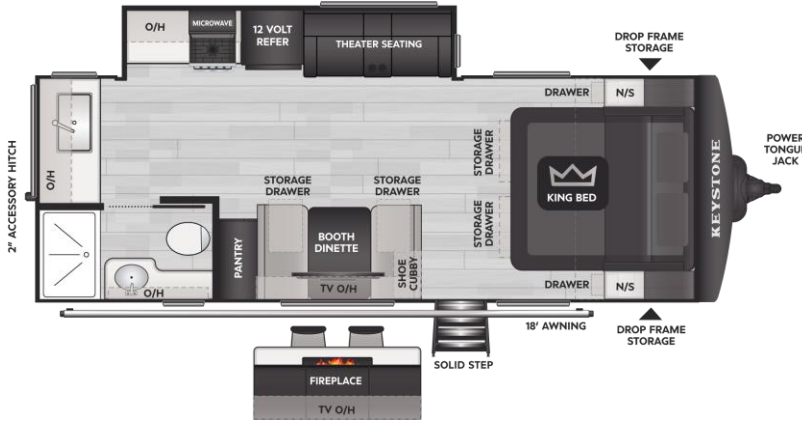


COUGAR

2026 HALF-TON TRAVEL TRAILER

22MLS



SPECIFICATIONS:

Shipping Wt.	6,110
Carrying Cap.	1,490
Hitch Weight	665
Length	26'10"
Height	11'5"
Fresh Water	54 gal.
Gray Water	30 gal.
Black Water	30 gal.
Sleeps Up To	4

KEY FLOORPLAN ADVANTAGES:

- Patented Front Windshield in Bedroom
- Under 27' total length
- Drop Frame Storage
 - Easy Access Door to Water Pump
 - Fully Heated with Full Illumination Lighting
- Fully Enclosed Convenience Center
- Exterior & Interior Switch for Awning Operation
- Travel access to Refrigerator and Bathroom
- Wide Open Living Room with 70" x 80" King Bed
- Deep Slide Out Providing Additional Floorspace
- Living Room 40" Smart LED TV
- 22 Cabinet Doors & Drawers in Kitchen / Living Room
- 8 Windows throughout, all open
- 15 110-volt Outlets throughout
- 8 USB/USB-C Charging Ports throughout
- 2" Accessory Hitch
- 18' of Awning Coverage
- No Slide Out on Patio Side Provides Large Campsite
- Large Storage Drawers Under Booth Dinette

KEYSTONE EXCLUSIVE FEATURES:

- HyperCore Composite Sidewalls
- Hyperdeck Composite Floor
- Key TV: all "one-piece" Coax Runs
- Giggy Box: 12v Distribution Box
- Color Coded & Unified Wiring System
- Flush Mount Heat Ducts
- My Keystone App for owners
- Solar Flex Protect 220
- Transferrable 1-year Base Warranty
- Transferrable 3-year Structural Warranty

ADDITIONAL STANDARD FEATURES:

(Bolded items are new for 2026)

- **High Gloss Fiberglass Exterior White Fog Color**
- **Airxcel Entry Steps with Composite Treads**
- **Bronze Bushings in Axle Hangers**
- **Power Watchdog™ Safeview Smart Power Inlet**
- ½" Thick Shackle Plates with Greaseable Wet Bolts
- Keyed Alike Locks
- Power Fresh Water Tank Fill
- Oxygenics Shower Head
- Recessed Interior Lighting
- Dimmable Lighting Throughout
- Snap-in Ceiling Battens, Snap-in Crown Molding
- Road Armor Suspension System
- Bed Base Storage Drawers
- Shatter Proof Front Cap with Automotive Paint
- Power Tongue Jack and Power Stabilizer Jacks
- ABS - Anti-Lock Braking System
- Goodyear Endurance Tires
- Tankless Water Heater
- Climate Guard - Tested & Approved from 0° to 110°
- Winegard Air 360+ Antenna
- 12 Volt Heat Pads on all Tanks
- Soft Close Cabinet Doors
- 12-volt Refrigerator
- Roller Shades throughout
- 30-amp Service

AVAILABLE OPTIONS:

- Auto-Leveling, **4-point** Lippert Ground Control
- Dual Pane Windows
- Slide Toppers
- Hutch with Fireplace and Folding Chairs
- Solar Flex Discover 440i
- Solar Flex Outlast 660i
- (2) 100-amp hour heated Lithium Batteries

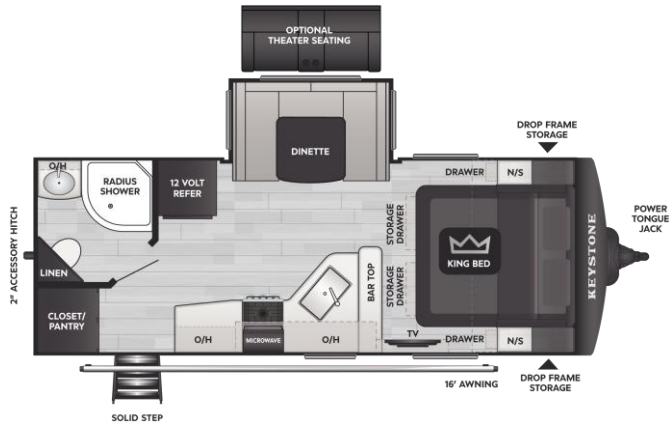
DISCLAIMER: Product information is as accurate as possible as of the date of this publication. All features, floor plans, and specifications are subject to change without notice. Pre-production estimated weights & lengths may be listed; visit Keystonerv.com for the most current product information and specifications.



COUGAR

2026 HALF-TON TRAVEL TRAILER

22RBS



SPECIFICATIONS:

Shipping Wt.	5,785
Carrying Cap.	1,815
Hitch Weight	670
Length	25'11"
Height	11'5"
Fresh Water	54 gal.
Gray Water	30 gal.
Black Water	30 gal.
Sleeps Up To	4

KEY FLOORPLAN ADVANTAGES:

- Patented Front Windshield in Bedroom
- Under 26' total length
- Drop Frame Storage
 - Easy Access Door to Water Pump
 - Fully Heated with Full Illumination Lighting
- Fully Enclosed Convenience Center
- Exterior & Interior Switch for Awning Operation
- Travel access to Refrigerator and Bathroom
- 70" x 80" King Bed
- Massive Closet / Pantry at Entrance
- Living Room 40" Smart LED TV
- 22 Cabinet Doors & Drawers in Kitchen / Living Room
- 6 Windows throughout, all open
- 15 110-volt Outlets throughout
- 8 USB/USB-C Charging Ports throughout
- 2" Accessory Hitch
- 16' of Awning Coverage
- No Slide Out on Patio Side Provides Large Campsite

KEYSTONE EXCLUSIVE FEATURES:

- HyperCore Composite Sidewalls
- Hyperdeck Composite Floor
- Key TV: all "one-piece" Coax Runs
- Giggy Box: 12v Distribution Box
- Color Coded & Unified Wiring System
- Flush Mount Heat Ducts
- My Keystone App for owners
- Solar Flex Protect 220
- Transferrable 1-year Base Warranty
- Transferrable 3-year Structural Warranty

ADDITIONAL STANDARD FEATURES:

(Bolded items are new for 2026)

- **High Gloss Fiberglass Exterior White Fog Color**
- **Airxcel Entry Steps with Composite Treads**
- **Bronze Bushings in Axle Hangers**
- **Power Watchdog™ Safeview Smart Power Inlet**
- ½" Thick Shackle Plates with Greaseable Wet Bolts
- Keyed Alike Locks
- Power Fresh Water Tank Fill
- Oxygenics Shower Head
- Recessed Interior Lighting
- Dimmable Lighting Throughout
- Snap-in Ceiling Battens, Snap-in Crown Molding
- Road Armor Suspension System
- Bed Base Storage Drawers
- Shatter Proof Front Cap with Automotive Paint
- Power Tongue Jack and Power Stabilizer Jacks
- ABS - Anti-Lock Braking System
- Goodyear Endurance Tires
- Tankless Water Heater
- Climate Guard - Tested & Approved from 0° to 110°
- Winegard Air 360+ Antenna
- 12 Volt Heat Pads on all Tanks
- Soft Close Cabinet Doors
- 12-volt Refrigerator
- Roller Shades throughout
- 30-amp Service

AVAILABLE OPTIONS:

- Auto-Leveling, **4-point** Lippert Ground Control
- Dual Pane Windows
- Theater Seating
- Slide Toppers
- Solar Flex Discover 440i
- Solar Flex Outlast 660i
- (2) 100-amp hour heated Lithium Batteries

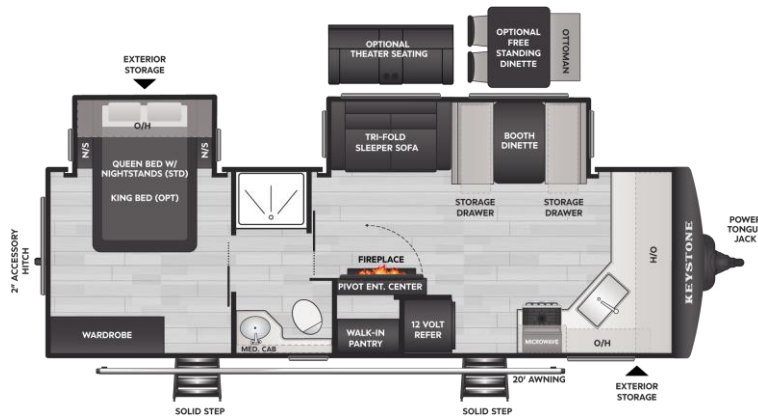
DISCLAIMER: Product information is as accurate as possible as of the date of this publication. All features, floor plans, and specifications are subject to change without notice. Pre-production estimated weights & lengths may be listed; visit Keystonerv.com for the most current product information and specifications.



COUGAR

2026 HALF-TON TRAVEL TRAILER

25FKD



SPECIFICATIONS:

Shipping Wt.	7,300
Carrying Cap.	1,500
Hitch Weight	945
Length	29'11"
Height	11'5"
Fresh Water	54 gal.
Gray Water	60 gal.
Black Water	30 gal.
Sleeps Up To	6

KEY FLOORPLAN ADVANTAGES:

- Under 30' Total Length
- Travel Access to Refrigerator and Bathroom
- Fully Enclosed Convenience Center
- Exterior & Interior Switch for Awning Operation
- Hidden Walk-in Pantry
- Two Entry Doors, Both Covered by Awning
- Living Room 40" Smart LED TV
- Large Walk-in Shower
- 9 Windows throughout, all open
- 20 110-volt Outlets throughout
- 5 USB/USB-C Charging Ports throughout
- 2" Accessory Hitch
- 20' of Awning Coverage
- Queen Bed with Nightstands
- No Slide Out on Patio Side Provides Large Campsite

KEYSTONE EXCLUSIVE FEATURES:

- HyperCore Composite Sidewalls
- Hyperdeck Composite Floor
- Key TV: all "one-piece" Coax Runs
- Giggy Box: 12v Distribution Box
- Color Coded & Unified Wiring System
- Flush Mount Heat Ducts
- My Keystone App for owners
- Solar Flex Protect 220
- Transferrable 1-year Base Warranty
- Transferrable 3-year Structural Warranty

ADDITIONAL STANDARD FEATURES:

(Bolded items are new for 2026)

- **High Gloss Fiberglass Exterior White Fog Color**
- **Airxcel Entry Steps with Composite Treads**
- **Bronze Bushings in Axle Hangers**
- **Power Watchdog™ Safeview Smart Power Inlet**
- ½" Thick Shackle Plates with Greaseable Wet Bolts
- Keyed Alike Locks
- Power Fresh Water Tank Fill
- Oxygenics Shower Head
- Recessed Interior Lighting
- Dimmable Lighting Throughout
- Snap-in Ceiling Battens, Snap-in Crown Molding
- Road Armor Suspension System
- Bed Base Storage Drawers
- Shatter Proof Front Cap with Automotive Paint
- Power Tongue Jack and Power Stabilizer Jacks
- ABS - Anti-Lock Braking System
- Goodyear Endurance Tires
- Tankless Water Heater
- Climate Guard - Tested & Approved from 0° to 110°
- Winegard Air 360+ Antenna
- 12 Volt Heat Pads on all Tanks
- Soft Close Cabinet Doors
- 12-volt Refrigerator
- Roller Shades throughout
- 50-amp Service

AVAILABLE OPTIONS:

- Auto-Leveling, **4-point** Lippert Ground Control
- 70" x 80" King Bed
- Dual Pane Windows
- Theater Seating
- 15k Ducted Bedroom A/C
- Slide Toppers
- Free Standing Dinette with Ottoman & Pivot Table
- Solar Flex Discover 440i
- Solar Flex Outlast 660i
- (2) 100-amp hour heated Lithium Batteries

DISCLAIMER: Product information is as accurate as possible as of the date of this publication. All features, floor plans, and specifications are subject to change without notice. Pre-production estimated weights & lengths may be listed; visit Keystonerv.com for the most current product information and specifications.

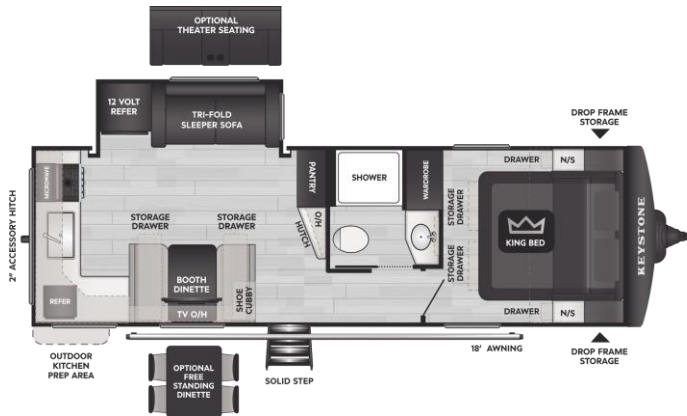
Revised 12/19/25



COUGAR

2026 HALF-TON TRAVEL TRAILER

25MLE



SPECIFICATIONS:

Shipping Wt.	6,676
Carrying Cap.	2,124
Hitch Weight	695
Length	29'11"
Height	11'5"
Fresh Water	54 gal.
Gray Water	60 gal.
Black Water	30 gal.
Sleeps Up To	6

KEY FLOORPLAN ADVANTAGES:

- Patented Front Windshield in Bedroom
- Under 30' Total Length
- Travel Access to Refrigerator and Bathroom
- Drop Frame Storage
 - Easy Access Door to Water Pump
 - Fully Heated with Full Illumination Lighting
- Fully Enclosed Convenience Center
- Exterior & Interior Switch for Awning Operation
- 70" x 80" King Bed
- Large Pantry with Coffee Bar / Hutch
- Living Room 40" Smart LED TV
- Massive Kitchen Countertop Space
- 22 Cabinet Doors & Drawers in Kitchen / Living Room
- 7 Windows throughout, all open
- 15 110-volt Outlets throughout
- 8 USB/USB-C Charging Ports throughout
- 2" Accessory Hitch
- No Slide Out on Patio Side Provides Large Campsite
- 18' of Awning Coverage
- Outside Kitchen Prep with Refrigerator

KEYSTONE EXCLUSIVE FEATURES:

- HyperCore Composite Sidewalls
- Hyperdeck Composite Floor
- Key TV: all "one-piece" Coax Runs
- Giggy Box: 12v Distribution Box
- Color Coded & Unified Wiring System
- Flush Mount Heat Ducts
- My Keystone App for owners
- Solar Flex Protect 220
- Transferrable 1-year Base Warranty
- Transferrable 3-year Structural Warranty

ADDITIONAL STANDARD FEATURES:

(Bolded items are new for 2026)

- **High Gloss Fiberglass Exterior White Fog Color**
- **Airxcel Entry Steps with Composite Treads**
- **Bronze Bushings in Axle Hangers**
- **Power Watchdog™ Safeview Smart Power Inlet**
- ½" Thick Shackle Plates with Greaseable Wet Bolts
- Keyed Alike Locks
- Power Fresh Water Tank Fill
- Oxygenics Shower Head
- Recessed Interior Lighting
- Dimmable Lighting Throughout
- Snap-in Ceiling Battens, Snap-in Crown Molding
- Road Armor Suspension System
- Bed Base Storage Drawers
- Shatter Proof Front Cap with Automotive Paint
- Power Tongue Jack and Power Stabilizer Jacks
- ABS - Anti-Lock Braking System
- Goodyear Endurance Tires
- Tankless Water Heater
- Climate Guard - Tested & Approved from 0° to 110°
- Winegard Air 360+ Antenna
- 12 Volt Heat Pads on all Tanks
- Soft Close Cabinet Doors
- 12-volt Refrigerator
- Roller Shades throughout
- 50-amp Service

AVAILABLE OPTIONS:

- Auto-Leveling, **4-point** Lippert Ground Control
- Dual Pane Windows
- Theater Seating
- 15k Ducted Bedroom A/C
- Slide Toppers
- Free Standing Dinette & Pivot Table
- Solar Flex Discover 440i
- Solar Flex Outlast 660i
- (2) 100-amp hour heated Lithium Batteries

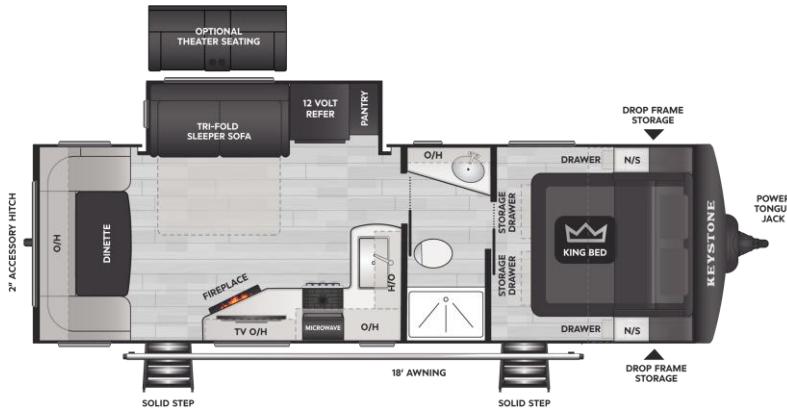
DISCLAIMER: Product information is as accurate as possible as of the date of this publication. All features, floor plans, and specifications are subject to change without notice. Pre-production estimated weights & lengths may be listed; visit Keystonerv.com for the most current product information and specifications.



COUGAR

2026 HALF-TON TRAVEL TRAILER

25RDS



SPECIFICATIONS:

Shipping Wt.	6,640
Carrying Cap.	2,160
Hitch Weight	885
Length	29'10"
Height	11'5"
Fresh Water	54 gal.
Gray Water	60 gal.
Black Water	30 gal.
Sleeps Up To	6

KEY FLOORPLAN ADVANTAGES:

- **Patented Front Windshield in Bedroom**
- **Under 30' Total Length**
- **Giant U-Shaped Dinette with Large Scenic Windows**
- **Dinette Table is Movable for Flexibility**
- **Drop Frame Storage**
 - **Easy Access Door to Water Pump**
 - **Fully Heated with Full Illumination Lighting**
- **Fully Enclosed Convenience Center**
- **Exterior & Interior Switch for Awning Operation**
- **70" x 80" King Bed**
- **Two Entry Doors, Both Covered by Awning**
- **No Slide Out on Patio Side Provides Large Campsite**
- **Living Room 50" Smart LED TV with Storage Behind**
- **22 Cabinet Doors & Drawers in Kitchen / Living Room**
- **9 Windows throughout, all open**
- **15 110-volt Outlets throughout**
- **8 USB/USB-C Charging Ports throughout**
- **2" Accessory Hitch**
- **18' of Awning Coverage**

KEYSTONE EXCLUSIVE FEATURES:

- HyperCore Composite Sidewalls
- Hyperdeck Composite Floor
- Key TV: all "one-piece" Coax Runs
- Giggy Box: 12v Distribution Box
- Color Coded & Unified Wiring System
- Flush Mount Heat Ducts
- My Keystone App for owners
- Solar Flex Protect 220
- Transferrable 1-year Base Warranty
- Transferrable 3-year Structural Warranty

ADDITIONAL STANDARD FEATURES:

(Bolded items are new for 2026)

- **High Gloss Fiberglass Exterior White Fog Color**
- **Airxcel Entry Steps with Composite Treads**
- **Bronze Bushings in Axle Hangers**
- **Power Watchdog™ Safeview Smart Power Inlet**
- **½" Thick Shackle Plates with Greaseable Wet Bolts**
- Keyed Alike Locks
- Power Fresh Water Tank Fill
- Oxygenics Shower Head
- Recessed Interior Lighting
- Dimmable Lighting Throughout
- Snap-in Ceiling Battens, Snap-in Crown Molding
- Road Armor Suspension System
- Bed Base Storage Drawers
- Shatter Proof Front Cap with Automotive Paint
- Power Tongue Jack and Power Stabilizer Jacks
- ABS - Anti-Lock Braking System
- Goodyear Endurance Tires
- Tankless Water Heater
- Climate Guard - Tested & Approved from 0° to 110°
- Winegard Air 360+ Antenna
- 12 Volt Heat Pads on all Tanks
- Soft Close Cabinet Doors
- 12-volt Refrigerator
- Roller Shades throughout
- 50-amp Service

AVAILABLE OPTIONS:

- Auto-Leveling, **4-point** Lippert Ground Control
- Dual Pane Windows
- Theater Seating
- 15k Ducted Bedroom A/C
- Slide Toppers
- Solar Flex Discover 440i
- Solar Flex Outlast 660i
- (2) 100-amp hour heated Lithium Batteries

DISCLAIMER: Product information is as accurate as possible as of the date of this publication. All features, floor plans, and specifications are subject to change without notice. Pre-production estimated weights & lengths may be listed; visit Keystonerv.com for the most current product information and specifications.

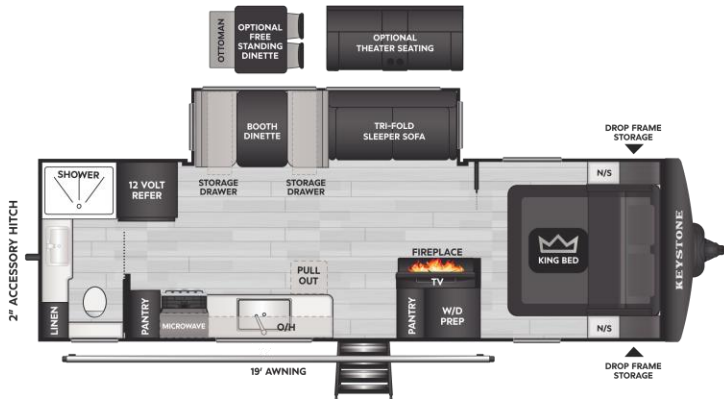


COUGAR

2026 HALF-TON TRAVEL TRAILER



26LBW



**Preliminary SPECIFICATIONS:

Shipping Wt.	7,055
Carrying Cap.	1,745
Hitch Weight	920
Length	30'10"
Height	11'5"
Fresh Water	54 gal.
Gray Water	60 gal.
Black Water	30 gal.
Sleeps Up To	6

KEY FLOORPLAN ADVANTAGES:

- Full Access When Slideout is Closed
- Patented Front Windshield in Bedroom
- 30"x40" Walk-in Shower
- Improved Bathroom Countertop Space
- Combo Washer & Dryer Prep
- Multi Function Closet / Pantry at Entrance
- Under 31' Total Length
- Drop Frame Storage
 - Easy Access Door to Water Pump
 - Fully Heated with Full Illumination Lighting
- Fully Enclosed Convenience Center
- Exterior & Interior Switch for Awning Operation
- 70" x 80" King Bed
- 19' of Awning Coverage
- No Slide Out on Patio Side Provides Large Campsite
- Oversized Scenic Window in Kitchen
- Pull-out Countertop Cabinet in Kitchen
- USB/USB-C Charging Ports throughout
- 2" Accessory Hitch

KEYSTONE EXCLUSIVE FEATURES:

- HyperCore Composite Sidewalls
- Hyperdeck Composite Floor
- Key TV: all "one-piece" Coax Runs
- Giggy Box: 12v Distribution Box
- Color Coded & Unified Wiring System
- Flush Mount Heat Ducts
- My Keystone App for owners
- Solar Flex Protect 220
- Transferrable 1-year Base Warranty
- Transferrable 3-year Structural Warranty

ADDITIONAL STANDARD FEATURES:

(Bolded items are new for 2026)

- **High Gloss Fiberglass Exterior White Fog Color**
- **Airxcel Entry Steps with Composite Treads**
- **Bronze Bushings in Axle Hangers**
- **Power Watchdog™ Safeview Smart Power Inlet**
- ½" Thick Shackles with Greaseable Wet Bolts
- Keyed Alike Locks
- Power Fresh Water Tank Fill
- Oxygenics Shower Head
- Recessed Interior Lighting
- Dimmable Lighting Throughout
- Snap-in Ceiling Battens, Snap-in Crown Molding
- Road Armor Suspension System
- Bed Base Storage Drawers
- Shatter Proof Front Cap with Automotive Paint
- Power Tongue Jack and Power Stabilizer Jacks
- ABS - Anti-Lock Braking System
- Goodyear Endurance Tires
- Tankless Water Heater
- Climate Guard - Tested & Approved from 0° to 110°
- Winegard Air 360+ Antenna
- 12 Volt Heat Pads on all Tanks
- Soft Close Cabinet Doors
- 12-volt Refrigerator
- Roller Shades throughout
- 50-amp Service

AVAILABLE OPTIONS:

- Auto-Leveling, **4-point** Lippert Ground Control
- Dual Pane Windows
- Theater Seating
- 15k Ducted Bedroom A/C
- Slide Toppers
- Free Standing Dinette with Ottoman & Pivot Table
- Solar Flex Discover 440i
- Solar Flex Outlast 660i
- (2) 100-amp hour heated Lithium Batteries

DISCLAIMER: Product information is as accurate as possible as of the date of this publication. All features, floor plans, and specifications are subject to change without notice. Pre-production estimated weights & lengths may be listed; visit Keystonerv.com for the most current product information and specifications.

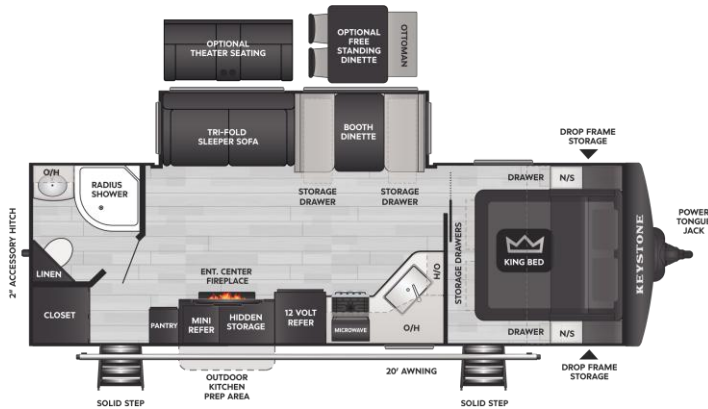


Revised 9/15/25

COUGAR

2026 HALF-TON TRAVEL TRAILER

26RBS



SPECIFICATIONS:

Shipping Wt.	6,810
Carrying Cap.	1,990
Hitch Weight	905
Length	29'11"
Height	11'5"
Fresh Water	54 gal.
Gray Water	60 gal.
Black Water	30 gal.
Sleeps Up To	6

KEY FLOORPLAN ADVANTAGES:

- **Patented Front Windshield in Bedroom**
- **Under 30' Total Length**
- **Drop Frame Storage**
 - **Easy Access Door to Water Pump**
 - **Fully Heated with Full Illumination Lighting**
- **Fully Enclosed Convenience Center**
- **Exterior & Interior Switch for Awning Operation**
- **70" x 80" King Bed**
- **20' of Awning Coverage**
- **Two Entry Doors, Both Covered by Awning**
- **No Slide Out on Patio Side Provides Large Campsite**
- **Living Room 50" Smart LED TV with Storage Behind**
- **Giant Closet at Rear Entrance**
- **22 Cabinet Doors & Drawers in Kitchen / Living Room**
- **6 Windows throughout, all open**
- **15 110-volt Outlets throughout**
- **8 USB/USB-C Charging Ports throughout**
- **2" Accessory Hitch**
- **Outside Kitchen Prep with Refrigerator**

KEYSTONE EXCLUSIVE FEATURES:

- HyperCore Composite Sidewalls
- Hyperdeck Composite Floor
- Key TV: all "one-piece" Coax Runs
- Giggy Box: 12v Distribution Box
- Color Coded & Unified Wiring System
- Flush Mount Heat Ducts
- My Keystone App for owners
- Solar Flex Protect 220
- Transferrable 1-year Base Warranty
- Transferrable 3-year Structural Warranty

ADDITIONAL STANDARD FEATURES:

(Bolded items are new for 2026)

- **High Gloss Fiberglass Exterior White Fog Color**
- **Airxcel Entry Steps with Composite Treads**
- **Bronze Bushings in Axle Hangers**
- **Power Watchdog™ Safeview Smart Power Inlet**
- **½" Thick Shackle Plates with Greaseable Wet Bolts**
- Keyed Alike Locks
- Power Fresh Water Tank Fill
- Oxygenics Shower Head
- Recessed Interior Lighting
- Dimmable Lighting Throughout
- Snap-in Ceiling Battens, Snap-in Crown Molding
- Road Armor Suspension System
- Bed Base Storage Drawers
- Shatter Proof Front Cap with Automotive Paint
- Power Tongue Jack and Power Stabilizer Jacks
- ABS - Anti-Lock Braking System
- Goodyear Endurance Tires
- Tankless Water Heater
- Climate Guard - Tested & Approved from 0° to 110°
- Winegard Air 360+ Antenna
- 12 Volt Heat Pads on all Tanks
- Soft Close Cabinet Doors
- 12-volt Refrigerator
- Roller Shades throughout
- 50-amp Service

AVAILABLE OPTIONS:

- Auto-Leveling, **4-point** Lippert Ground Control
- Dual Pane Windows
- Theater Seating
- 15k Ducted Bedroom A/C
- Slide Toppers
- Free Standing Dinette with Ottoman & Pivot Table
- Solar Flex Discover 440i
- Solar Flex Outlast 660i
- (2) 100-amp hour heated Lithium Batteries

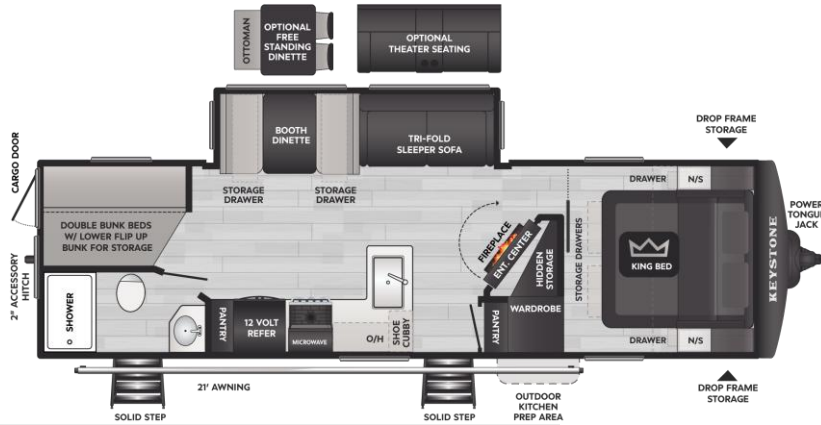
DISCLAIMER: Product information is as accurate as possible as of the date of this publication. All features, floor plans, and specifications are subject to change without notice. Pre-production estimated weights & lengths may be listed; visit Keystonerv.com for the most current product information and specifications.



COUGAR

2026 HALF-TON TRAVEL TRAILER

28BHS



SPECIFICATIONS:

Shipping Wt.	7,220
Carrying Cap.	2,540
Hitch Weight	960
Length	32'11"
Height	11'5"
Fresh Water	54 gal.
Gray Water	60 gal.
Black Water	30 gal.
Sleeps Up To	10

KEY FLOORPLAN ADVANTAGES:

- **Patented Front Windshield in Bedroom**
- **Travel Access to Refrigerator and Bathroom**
- **Less than 33' Total Length**
- **Drop Frame Storage**
 - **Easy Access Door to Water Pump**
 - **Fully Heated with Full Illumination Lighting**
- **Fully Enclosed Convenience Center**
- **Exterior & Interior Switch for Awning Operation**
- **70" x 80" King Bed**
- **3 Pantries: Kitchen, Entryway, and Entertainment**
- **No Slide Out on Patio Side Provides Large Campsite**
- **Large Storage Drawers under Booth Dinette**
- **Pull-out Storage Bin under Bunk**
- **Rear Cargo Door Allowing Items up to 13'6" Long**
- **9 Windows throughout, all open**
- **Large Exterior Refrigerator with LP Quick Connect**
- **2" Accessory Hitch**
- **Single Termination Point for Tank Dumping**
- **21' of Awning Coverage**

KEYSTONE EXCLUSIVE FEATURES:

- HyperCore Composite Sidewalls
- Hyperdeck Composite Floor
- Key TV: all "one-piece" Coax Runs
- Giggy Box: 12v Distribution Box
- Color Coded & Unified Wiring System
- Flush Mount Heat Ducts
- My Keystone App for owners
- Solar Flex Protect 220
- Transferrable 1-year Base Warranty
- Transferrable 3-year Structural Warranty

ADDITIONAL STANDARD FEATURES:

(Bolded items are new for 2026)

- **High Gloss Fiberglass Exterior White Fog Color**
- **Airxcel Entry Steps with Composite Treads**
- **Bronze Bushings in Axle Hangers**
- **Power Watchdog™ Safeview Smart Power Inlet**
- **½" Thick Shackle Plates with Greaseable Wet Bolts**
- Keyed Alike Locks
- Power Fresh Water Tank Fill
- Oxygenics Shower Head
- Recessed Interior Lighting
- Dimmable Lighting Throughout
- Snap-in Ceiling Battens, Snap-in Crown Molding
- Road Armor Suspension System
- Bed Base Storage Drawers
- Shatter Proof Front Cap with Automotive Paint
- Power Tongue Jack and Power Stabilizer Jacks
- ABS - Anti-Lock Braking System
- Goodyear Endurance Tires
- Tankless Water Heater
- Climate Guard - Tested & Approved from 0° to 110°
- Winegard Air 360+ Antenna
- 12 Volt Heat Pads on all Tanks
- Soft Close Cabinet Doors
- 12-volt Refrigerator
- Roller Shades throughout
- 50-amp Service

AVAILABLE OPTIONS:

- Auto-Leveling, **4-point** Lippert Ground Control
- Dual Pane Windows
- Theater Seating
- 15k Ducted Bedroom A/C
- Slide Toppers
- Free Standing Dinette with Ottoman & Pivot Table
- Solar Flex Discover 440i
- Solar Flex Outlast 660i
- (2) 100-amp hour heated Lithium Batteries

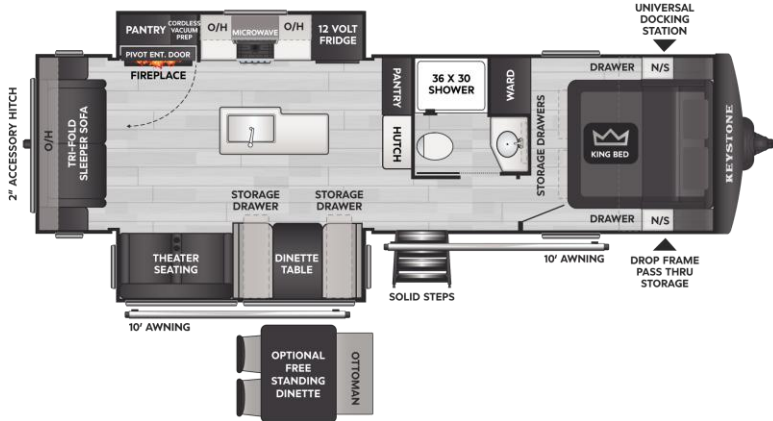
DISCLAIMER: Product information is as accurate as possible as of the date of this publication. All features, floor plans, and specifications are subject to change without notice. Pre-production estimated weights & lengths may be listed; visit Keystonerv.com for the most current product information and specifications.



COUGAR

2026 HALF-TON TRAVEL TRAILER

29RLP



SPECIFICATIONS:

Shipping Wt.	7,845
Carrying Cap.	1,945
Hitch Weight	990
Length	33'7"
Height	11'5"
Fresh Water	54 gal.
Gray Water	60 gal.
Black Water	30 gal.
Sleeps Up To	6

KEY FLOORPLAN ADVANTAGES:

- **Patented Front Windshield in Bedroom**
- **Under 34' Total Length**
- **Travel Access to Refrigerator and Bathroom**
- **Drop Frame Storage**
 - **Easy Access Door to Water Pump**
 - **Fully Heated with Full Illumination Lighting**
- **Fully Enclosed Convenience Center**
- **Exterior & Interior Switch for Awning Operation**
- **Large Kitchen Island Providing Extra Counterspace**
- **Pivot Entertainment Center with Hidden Pantry**
- **70" x 80" King Bed**
- **Great Seating with Sofa and Theater Seating Included**
- **Living Room 40" Smart LED TV with Storage Behind**
- **9 Windows throughout, all open**
- **2" Accessory Hitch**
- **Dual 10' Awnings Totaling 20' of Awning Coverage**

KEYSTONE EXCLUSIVE FEATURES:

- HyperCore Composite Sidewalls
- Hyperdeck Composite Floor
- Key TV: all "one-piece" Coax Runs
- Giggy Box: 12v Distribution Box
- Color Coded & Unified Wiring System
- Flush Mount Heat Ducts
- My Keystone App for owners
- Solar Flex Protect 220
- Transferrable 1-year Base Warranty
- Transferrable 3-year Structural Warranty

ADDITIONAL STANDARD FEATURES:

(Bolded items are new for 2026)

- **High Gloss Fiberglass Exterior White Fog Color**
- **Airxcel Entry Steps with Composite Treads**
- **Bronze Bushings in Axle Hangers**
- **Power Watchdog™ Safeview Smart Power Inlet**
- **½" Thick Shackle Plates with Greaseable Wet Bolts**
- Keyed Alike Locks
- Power Fresh Water Tank Fill
- Oxygenics Shower Head
- Recessed Interior Lighting
- Dimmable Lighting Throughout
- Snap-in Ceiling Battens, Snap-in Crown Molding
- Road Armor Suspension System
- Bed Base Storage Drawers
- Shatter Proof Front Cap with Automotive Paint
- Power Tongue Jack and Power Stabilizer Jacks
- ABS - Anti-Lock Braking System
- Goodyear Endurance Tires
- Tankless Water Heater
- Climate Guard - Tested & Approved from 0° to 110°
- Winegard Air 360+ Antenna
- 12 Volt Heat Pads on all Tanks
- Soft Close Cabinet Doors
- 12-volt Refrigerator
- Roller Shades throughout
- 50-amp Service

AVAILABLE OPTIONS:

- Auto-Leveling, **4-point** Lippert Ground Control
- Dual Pane Windows
- 15k Ducted Bedroom A/C
- Slide Toppers
- Free Standing Dinette with Ottoman & Pivot Table
- Solar Flex Discover 440i
- Solar Flex Outlast 660i
- (2) 100-amp hour heated Lithium Batteries

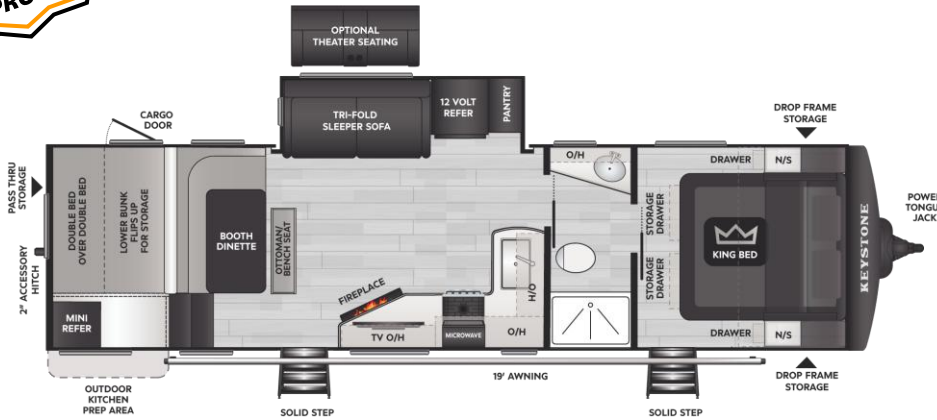
DISCLAIMER: Product information is as accurate as possible as of the date of this publication. All features, floor plans, and specifications are subject to change without notice. Pre-production estimated weights & lengths may be listed; visit Keystonerv.com for the most current product information and specifications.



COUGAR

2026 HALF-TON TRAVEL TRAILER

30BHS



SPECIFICATIONS:

Shipping Wt.	7,210
Carrying Cap.	2,290
Hitch Weight	790
Length	34'5"
Height	11'5"
Fresh Water	54 gal.
Gray Water	60 gal.
Black Water	30 gal.
Sleeps Up To	10

KEY FLOORPLAN ADVANTAGES:

- Patented Front Windshield in Bedroom
- Travel Access to Refrigerator and Bathroom
- Drop Frame Storage
 - Easy Access Door to Water Pump
 - Fully Heated with Full Illumination Lighting
- Fully Enclosed Convenience Center
- Exterior & Interior Switch for Awning Operation
- 70" x 80" King Bed
- Extra Counterspace and Window in Bathroom
- Two Entry Doors, Both Covered by Awning
- No Slide Out on Patio Side Provides Large Campsite
- Living Room 50" Smart LED TV with Storage Behind
- Outside Kitchen Prep with Refrigerator
- 22 Cabinet Doors & Drawers in Kitchen / Living Room
- 11 Windows throughout, all open
- 15 110-volt Outlets throughout
- 8 USB/USB-C Charging Ports throughout
- 2" Accessory Hitch
- Large L-Dinette with Ottoman Bench Seating
- 19' of Awning Coverage
- Large Rear Cargo Door Providing Abundant Storage
- Flip-up Bunk Provides Storage Area for Larger Items

KEYSTONE EXCLUSIVE FEATURES:

- HyperCore Composite Sidewalls
- Hyperdeck Composite Floor
- Key TV: all "one-piece" Coax Runs
- Giggy Box: 12v Distribution Box
- Color Coded & Unified Wiring System
- Flush Mount Heat Ducts
- My Keystone App for owners
- Solar Flex Protect 220
- Transferrable 1-year Base Warranty
- Transferrable 3-year Structural Warranty

ADDITIONAL STANDARD FEATURES:

(Bolded items are new for 2026)

- **High Gloss Fiberglass Exterior White Fog Color**
- **Airxcel Entry Steps with Composite Treads**
- **Bronze Bushings in Axle Hangers**
- **Power Watchdog™ Safeview Smart Power Inlet**
- ½" Thick Shackle Plates with Greaseable Wet Bolts
- Keyed Alike Locks
- Power Fresh Water Tank Fill
- Oxygenics Shower Head
- Recessed Interior Lighting
- Dimmable Lighting Throughout
- Snap-in Ceiling Battens, Snap-in Crown Molding
- Road Armor Suspension System
- Bed Base Storage Drawers
- Shatter Proof Front Cap with Automotive Paint
- Power Tongue Jack and Power Stabilizer Jacks
- ABS - Anti-Lock Braking System
- Goodyear Endurance Tires
- Tankless Water Heater
- Climate Guard - Tested & Approved from 0° to 110°
- Winegard Air 360+ Antenna
- 12 Volt Heat Pads on all Tanks
- Soft Close Cabinet Doors
- 12-volt Refrigerator
- Roller Shades throughout
- 50-amp Service

AVAILABLE OPTIONS:

- Auto-Leveling, **4-point** Lippert Ground Control
- Dual Pane Windows
- Theater Seating
- 15k Ducted Bedroom A/C
- Slide Toppers
- Solar Flex Discover 440i
- Solar Flex Outlast 660i
- (2) 100-amp hour heated Lithium Batteries

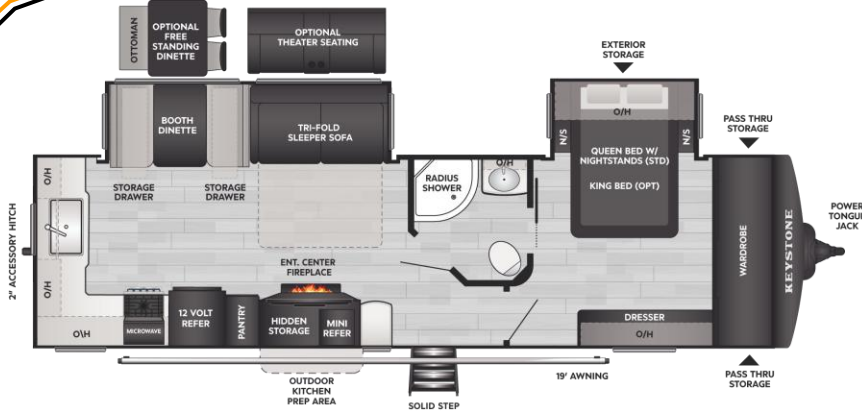
DISCLAIMER: Product information is as accurate as possible as of the date of this publication. All features, floor plans, and specifications are subject to change without notice. Pre-production estimated weights & lengths may be listed; visit Keystonerv.com for the most current product information and specifications.



COUGAR

2026 HALF-TON TRAVEL TRAILER

30RKD



SPECIFICATIONS:

Shipping Wt.	7,715
Carrying Cap.	1,785
Hitch Weight	955
Length	34'9"
Height	11'5"
Fresh Water	54 gal.
Gray Water	60 gal.
Black Water	30 gal.
Sleeps Up To	6

KEY FLOORPLAN ADVANTAGES:

- Travel Access to Refrigerator and Bathroom
- Drop Frame Storage
 - Easy Access Door to Water Pump
 - Fully Heated with Full Illumination Lighting
- Fully Enclosed Convenience Center
- Exterior & Interior Switch for Awning Operation
- Abundant Counterspace in Kitchen
- Queen Bed with Nightstands
- Wall-to-Wall, 96" Wide Front Wardrobe
- Massive Kitchen Countertop Space
- No Slide Out on Patio Side Provides Large Campsite
- Living Room 50" Smart LED TV with Storage Behind
- Outside Kitchen with Refrigerator and Griddle
- 22 Cabinet Doors & Drawers in Kitchen / Living Room
- 10 Windows throughout, all open
- 15 110-volt Outlets throughout
- 8 USB/USB-C Charging Ports throughout
- 2" Accessory Hitch
- Oversized Kitchen Window
- 19' of Awning Coverage

KEYSTONE EXCLUSIVE FEATURES:

- HyperCore Composite Sidewalls
- Hyperdeck Composite Floor
- Key TV: all "one-piece" Coax Runs
- Giggy Box: 12v Distribution Box
- Color Coded & Unified Wiring System
- Flush Mount Heat Ducts
- My Keystone App for owners
- Solar Flex Protect 220
- Transferrable 1-year Base Warranty
- Transferrable 3-year Structural Warranty

ADDITIONAL STANDARD FEATURES:

(Bolded items are new for 2026)

- **High Gloss Fiberglass Exterior White Fog Color**
- **Airxcel Entry Steps with Composite Treads**
- **Bronze Bushings in Axle Hangers**
- **Power Watchdog™ Safeview Smart Power Inlet**
- ½" Thick Shackle Plates with Greaseable Wet Bolts
- Keyed Alike Locks
- Power Fresh Water Tank Fill
- Oxygenics Shower Head
- Recessed Interior Lighting
- Dimmable Lighting Throughout
- Snap-in Ceiling Battens, Snap-in Crown Molding
- Road Armor Suspension System
- Bed Base Storage Drawers
- Shatter Proof Front Cap with Automotive Paint
- Power Tongue Jack and Power Stabilizer Jacks
- ABS - Anti-Lock Braking System
- Goodyear Endurance Tires
- Tankless Water Heater
- Climate Guard - Tested & Approved from 0° to 110°
- Winegard Air 360+ Antenna
- 12 Volt Heat Pads on all Tanks
- Soft Close Cabinet Doors
- 12-volt Refrigerator
- Roller Shades throughout
- 50-amp Service

AVAILABLE OPTIONS:

- Auto-Leveling, **4-point** Lippert Ground Control
- 70"x80" King Bed
- Dual Pane Windows
- Theater Seating
- 15k Ducted Bedroom A/C
- Slide Toppers
- Free Standing Dinette with Ottoman & Pivot Table
- (2) 100-amp hour heated Lithium Batteries
- Solar Flex Discover 440i
- Solar Flex Outlast 660i

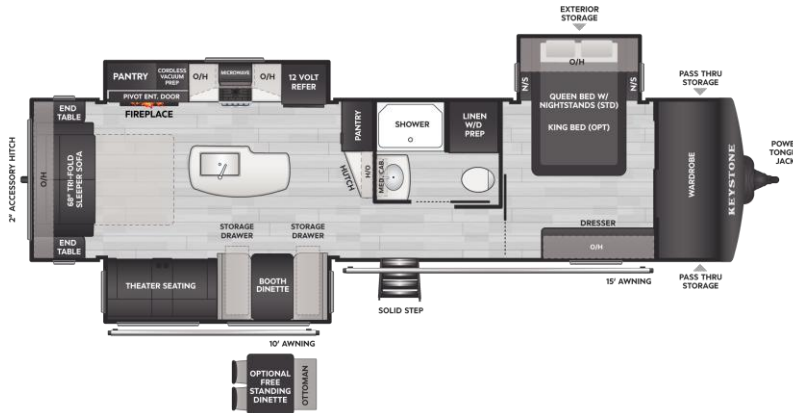
DISCLAIMER: Product information is as accurate as possible as of the date of this publication. All features, floor plans, and specifications are subject to change without notice. Pre-production estimated weights & lengths may be listed; visit Keystonerv.com for the most current product information and specifications.



COUGAR

2026 HALF-TON TRAVEL TRAILER

33RLI



SPECIFICATIONS:

Shipping Wt.	8,490
Carrying Cap.	2,010
Hitch Weight	1,035
Length	37'5"
Height	11'5"
Fresh Water	54 gal.
Gray Water	60 gal.
Black Water	30 gal.
Sleeps Up To	6

KEY FLOORPLAN ADVANTAGES:

- Travel Access to Refrigerator and Bathroom
- Drop Frame Storage
 - Easy Access Door to Water Pump
 - Fully Heated with Full Illumination Lighting
- Fully Enclosed Convenience Center
- Exterior & Interior Switch for Awning Operation
- Queen Bed with Nightstands
- Wall-to-Wall, 96" Wide Front Wardrobe
- Washer Dryer Prep in Bathroom
- Full Pantry with Hutch and Coffee Station
- Living Room 50" Smart LED TV with Storage Behind
- Larger Shower with Sliding Glass Doors
- 22 Cabinet Doors & Drawers in Kitchen / Living Room
- 11 Windows throughout, all open
- 15 110-volt Outlets throughout
- 8 USB/USB-C Charging Ports throughout
- 2" Accessory Hitch
- Furnace and Water Heater located Off-door side
- Dual Awnings Providing 25' of Awning Coverage

KEYSTONE EXCLUSIVE FEATURES:

- HyperCore Composite Sidewalls
- Hyperdeck Composite Floor
- Key TV: all "one-piece" Coax Runs
- Giggy Box: 12v Distribution Box
- Color Coded & Unified Wiring System
- Flush Mount Heat Ducts
- My Keystone App for owners
- Solar Flex Protect 220
- Transferrable 1-year Base Warranty
- Transferrable 3-year Structural Warranty

ADDITIONAL STANDARD FEATURES:

(Bolded items are new for 2026)

- **High Gloss Fiberglass Exterior White Fog Color**
- **Airxcel Entry Steps with Composite Treads**
- **Bronze Bushings in Axle Hangers**
- **Power Watchdog™ Safeview Smart Power Inlet**
- ½" Thick Shackle Plates with Greaseable Wet Bolts
- Keyed Alike Locks
- Power Fresh Water Tank Fill
- Oxygenics Shower Head
- Recessed Interior Lighting
- Dimmable Lighting Throughout
- Snap-in Ceiling Battens, Snap-in Crown Molding
- Road Armor Suspension System
- Bed Base Storage Drawers
- Shatter Proof Front Cap with Automotive Paint
- Power Tongue Jack and Power Stabilizer Jacks
- ABS - Anti-Lock Braking System
- Goodyear Endurance Tires
- Tankless Water Heater
- Climate Guard - Tested & Approved from 0° to 110°
- Winegard Air 360+ Antenna
- 12 Volt Heat Pads on all Tanks
- Soft Close Cabinet Doors
- 12-volt Refrigerator
- Roller Shades throughout
- 50-amp Service

AVAILABLE OPTIONS:

- Auto-Leveling, **4-point** Lippert Ground Control
- 70"x80" King Bed
- Dual Pane Windows
- 15k Ducted Bedroom A/C
- Slide Toppers
- Free Standing Dinette with Ottoman & Pivot Table
- (2) 100-amp hour heated Lithium Batteries
- Solar Flex Discover 440i
- Solar Flex Outlast 660i

DISCLAIMER: Product information is as accurate as possible as of the date of this publication. All features, floor plans, and specifications are subject to change without notice. Pre-production estimated weights & lengths may be listed; visit Keystonerv.com for the most current product information and specifications.



COUGAR

2026 HALF-TON TRAVEL TRAILER

34TSB



SPECIFICATIONS:

Shipping Wt.	8,775
Carrying Cap.	1,725
Hitch Weight	1,175
Length	37'5"
Height	11'5"
Fresh Water	54 gal.
Gray Water	60 gal.
Black Water	30 gal.
Sleeps Up To	11

KEY FLOORPLAN ADVANTAGES:

- **Patented Front Windshield in Bedroom**
- **7 Total Beds with Large Bunk Room**
- **Dual Entry Bathroom**
- **Drop Frame Storage**
 - **Easy Access Door to Water Pump**
 - **Fully Heated with Full Illumination Lighting**
- **Fully Enclosed Convenience Center**
- **Exterior & Interior Switch for Awning Operation**
- **70" x 80" King Bed**
- **Full-size Outside Kitchen**
- **Optional Theater Seating Across from Entertainment**
- **Dinette and Theater Seating on Campsite Side**
- **Living Room 50" Smart LED TV with Storage Behind**
- **Water Heater Vents on Off-door Side**
- **22 Cabinet Doors & Drawers in Kitchen / Living Room**
- **10 Windows throughout, all open**
- **15 110-volt Outlets throughout**
- **8 USB/USB-C Charging Ports throughout**
- **2" Accessory Hitch**
- **Dual Awnings Providing 19' of Awning Coverage**

KEYSTONE EXCLUSIVE FEATURES:

- HyperCore Composite Sidewalls
- Hyperdeck Composite Floor
- Key TV: all "one-piece" Coax Runs
- Giggy Box: 12v Distribution Box
- Color Coded & Unified Wiring System
- Flush Mount Heat Ducts
- My Keystone App for owners
- Solar Flex Protect 220
- Transferrable 1-year Base Warranty
- Transferrable 3-year Structural Warranty

ADDITIONAL STANDARD FEATURES:

(Bolded items are new for 2026)

- **High Gloss Fiberglass Exterior White Fog Color**
- **Airxcel Entry Steps with Composite Treads**
- **Bronze Bushings in Axle Hangers**
- **Power Watchdog™ Safeview Smart Power Inlet**
- **½" Thick Shackle Plates with Greaseable Wet Bolts**
- Keyed Alike Locks
- Power Fresh Water Tank Fill
- Oxygenics Shower Head
- Recessed Interior Lighting
- Dimmable Lighting Throughout
- Snap-in Ceiling Battens, Snap-in Crown Molding
- Road Armor Suspension System
- Bed Base Storage Drawers
- Shatter Proof Front Cap with Automotive Paint
- Power Tongue Jack and Power Stabilizer Jacks
- ABS - Anti-Lock Braking System
- Goodyear Endurance Tires
- Tankless Water Heater
- Climate Guard - Tested & Approved from 0° to 110°
- Winegard Air 360+ Antenna
- 12 Volt Heat Pads on all Tanks
- Soft Close Cabinet Doors
- 12-volt Refrigerator
- Roller Shades throughout
- 50-amp Service

AVAILABLE OPTIONS:

- Auto-Leveling, **4-point** Lippert Ground Control
- Dual Pane Windows
- Theater Seating
- 15k Ducted Bedroom A/C
- Slide Toppers
- Free Standing Dinette with Ottoman & Pivot Table
- Solar Flex Discover 440i
- Solar Flex Outlast 660i
- (2) 100-amp hour heated Lithium Batteries

DISCLAIMER: Product information is as accurate as possible as of the date of this publication. All features, floor plans, and specifications are subject to change without notice. Pre-production estimated weights & lengths may be listed; visit Keystonerv.com for the most current product information and specifications.

