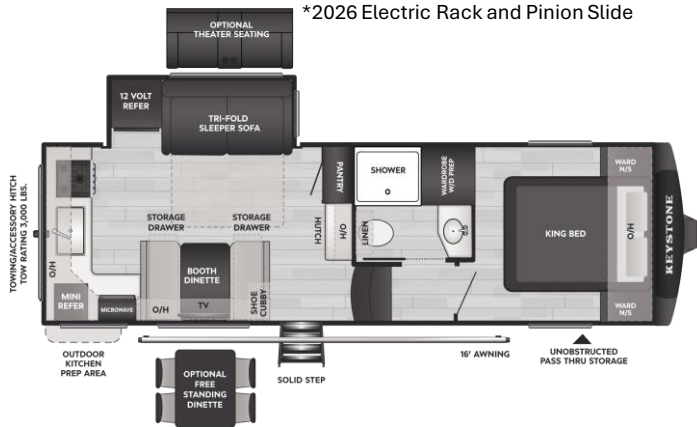


COUGAR

2026 HALF-TON FIFTH WHEEL

23 MILE

*2026 Electric Rack and Pinion Slide



SPECIFICATIONS:

Shipping Wt.	7,745
Carrying Cap.	2,330
Hitch Weight	1,275
Length	27'11"
Height*	12'7"
Fresh Water	54 gal.
Gray Water	60 gal.
Black Water	30 gal.
Sleeps Up To	6

*Single A/C
*12'11" with 2nd A/C

KEY FLOORPLAN ADVANTAGES:

- Under 28' total length
- King Bed Standard
- Washer Dryer Combo Prep
- Travel access to Refrigerator and Bathroom
- Full Pantry with Coffee Station / Hutch
- Booth Dinette with deep Storage Drawers
- Shoe Cubby under Steps and Booth Dinette
- Exterior & Interior Switch for Awning Operation
- Walk-in Shower with Glass Doors
- Sunken "In-Wall" Linen Cabinet in Bathroom
- Living Room 40" Smart LED TV
- 19 Cabinet Doors & Drawers in Kitchen / Living Room
- 7 Windows throughout, all open
- 15 110-volt Outlets throughout
- 8 USB/USB-C Charging Ports throughout
- Towing Hitch with 3,000 lbs. Capacity
- Outside Kitchen Prep with Refrigerator

KEYSTONE EXCLUSIVE FEATURES:

- Water Management Center with Shutoff Valves
- HyperCore Composite Sidewalls
- Hyperdeck Composite Floor
- Key TV: all "one-piece" Coax Runs
- Giggy Box: 12v Distribution Box
- Color Coded & Unified Wiring System
- Flush Mount Heat Ducts
- My Keystone App for owners
- Solar Flex Protect 220
- Transferrable 1-year Base Warranty
- Transferrable 3-year Structural Warranty

ADDITIONAL STANDARD FEATURES:

(Bolded items are new for 2026)

- **Ducted 18k Furrion Chill Cube main A/C**
- **High Gloss Fiberglass Exterior White Fog Color**
- **Airxcel Entry Steps with Composite Treads**
- **Bronze Bushings in Axle Hangers**
- **Power Watchdog™ Safeview Smart Power Inlet**
- **Curt Helux Shock-Absorbing Pin Box**
- ½" Thick Shackle Plates with Greaseable Wet Bolts
- Key-Alike Lock System
- Power Fresh Water Tank Fill
- Oxygenics Shower Head
- Recessed Interior Lighting
- Dimmable Lighting Throughout
- Snap-in Ceiling Battens, Snap-in Crown Molding
- Road Armor Suspension System
- ABS - Anti-Lock Braking System
- Goodyear Endurance Tires
- Tankless Water Heater
- Climate Guard - Tested & Approved from 0° to 110°
- Heat, Light & Massage in Theater Seats
- Winegard Air 360+ Antenna with Roof Satellite Prep
- 12 Volt Heat Pads on all Tanks
- Soft Close Cabinet Doors with Hidden Hinges
- 12-volt Refrigerator
- Roller Shades throughout
- 50-amp Service
- Auto-Leveling, **4-point** Lippert Ground Control

AVAILABLE OPTIONS:

- Theater Seating
- Dual Pane Windows
- 15k Ducted Bedroom A/C
- Slide Toppers
- Free Standing Dinette
- Solar Flex Discover 440i
- Solar Flex Outlast 660i
- (2) 100-amp hour heated Lithium Batteries

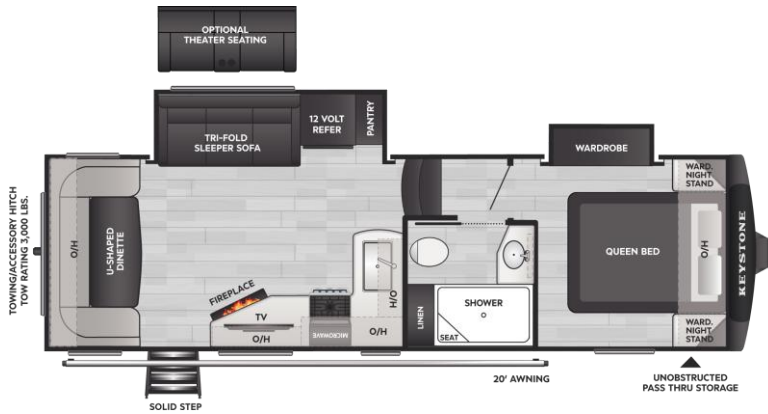
DISCLAIMER: Product information is as accurate as possible as of the date of this publication. All features, floor plans, and specifications are subject to change without notice. Pre-production estimated weights & lengths may be listed; visit Keystonerv.com for the most current product information and specifications.



COUGAR

2026 HALF-TON FIFTH WHEEL

24RDS



SPECIFICATIONS:

Shipping Wt.	7,612
Carrying Cap.	2,388
Hitch Weight	1,430
Length	28'10"
Height*	12'7"
Fresh Water	54 gal.
Gray Water	60 gal.
Black Water	30 gal.
Sleeps Up To	6

*Single A/C
*12'11" with 2nd A/C

KEY FLOORPLAN ADVANTAGES:

- Under 30' total length
- Huge Rear Dinette with Large Scenic Windows
- Wardrobe Slide with Drawers and Hanging Storage
- No Slideout on Door-side Providing Huge Patio Area
- Exterior & Interior Switch for Awning Operation
- Walk-in Shower with Seat and Glass Doors
- "Do More" Dinette Table
- Full Linen Cabinet in Bathroom
- Living Room 40" Smart LED TV
- Electric Fireplace Providing 5000 btu of Heat
- 15 Cabinet Doors & Drawers in Kitchen / Living Room
- 7 Windows throughout, all open
- 15 110-volt Outlets throughout
- 8 USB/USB-C Charging Ports throughout
- Towing Hitch with 3,000 lbs. Capacity
- 20' of Awning Coverage

KEYSTONE EXCLUSIVE FEATURES:

- **Water Management Center with Shutoff Valves**
- HyperCore Composite Sidewalls
- Hyperdeck Composite Floor
- Key TV: all "one-piece" Coax Runs
- Giggy Box: 12v Distribution Box
- Color Coded & Unified Wiring System
- Flush Mount Heat Ducts
- My Keystone App for owners
- Solar Flex Protect 220
- Transferrable 1-year Base Warranty
- Transferrable 3-year Structural Warranty

ADDITIONAL STANDARD FEATURES:

(Bolded items are new for 2026)

- **Ducted 18k Furrion Chill Cube main A/C**
- **High Gloss Fiberglass Exterior White Fog Color**
- **Airxcel Entry Steps with Composite Treads**
- **Bronze Bushings in Axle Hangers**
- **Power Watchdog™ Safeview Smart Power Inlet**
- ½" Thick Shackle Plates with Greaseable Wet Bolts
- Key-Alike Lock System
- Power Fresh Water Tank Fill
- Oxygenics Shower Head
- Recessed Interior Lighting
- Dimmable Lighting Throughout
- Snap-in Ceiling Battens, Snap-in Crown Molding
- Road Armor Suspension System
- ABS - Anti-Lock Braking System
- Goodyear Endurance Tires
- Tankless Water Heater
- Climate Guard - Tested & Approved from 0° to 110°
- Heat, Light & Massage in Theater Seats
- Winegard Air 360+ Antenna with Roof Satellite Prep
- 12 Volt Heat Pads on all Tanks
- Soft Close Cabinet Doors with Hidden Hinges
- 12-volt Refrigerator
- Roller Shades throughout
- 50-amp Service
- Auto-Leveling, **4-point** Lippert Ground Control

AVAILABLE OPTIONS:

- Theater Seating
- Dual Pane Windows
- 15k Ducted Bedroom A/C
- Slide Toppers
- Solar Flex Discover 440i
- Solar Flex Outlast 660i
- (2) 100-amp hour heated Lithium Batteries

DISCLAIMER: Product information is as accurate as possible as of the date of this publication. All features, floor plans, and specifications are subject to change without notice. Pre-production estimated weights & lengths may be listed; visit Keystonerv.com for the most current product information and specifications.

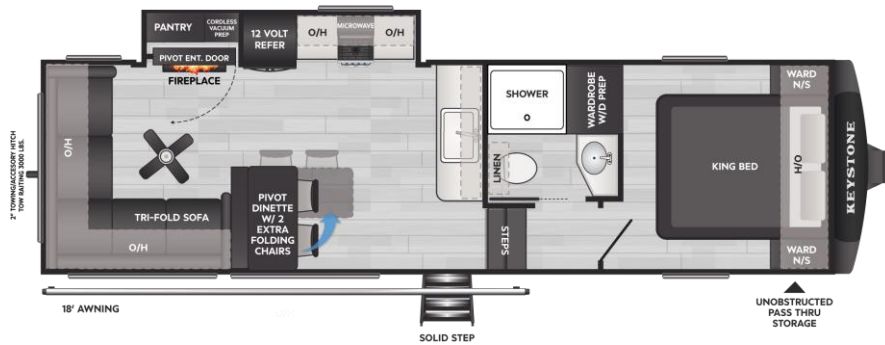


COUGAR

2026 HALF-TON FIFTH WHEEL

26RES

Electric Rack and Pinion Slide



SPECIFICATIONS:

Shipping Wt.	7,965
Carrying Cap.	2,035
Hitch Weight	1,465
Length	30'11"
Height*	12'7"
Fresh Water	54 gal.
Gray Water	60 gal.
Black Water	30 gal.
Sleeps Up To	6

*Single A/C

*12'9" with 2nd A/C

KEY FLOORPLAN ADVANTAGES:

- 20' of Panoramic View in Living Room
- King Bed Standard
- Perfect Overall Length for State and National Parks
- Huge Patio Area Covered by 18' Awning
- Washer Dryer Combo Prepped
- Sliding Dinette Table with (2) Folding Chairs and Ottoman
- Countertop Space on Both Sides of Stove for Prepping Area.
- Sunken "In-Wall" Linen Cabinet in Bathroom
- Exterior & Interior Switch for Awning Operation
- 12-volt Ceiling Fan
- Residential L-Sofa with Tri-Fold Sleeping Sofa
- Accessory Hitch for Bike Rack
- Full Travel Access to Refrigerator and Bathroom

KEYSTONE EXCLUSIVE FEATURES:

- Water Management Center with Shutoff Valves
- HyperCore Composite Sidewalls
- Hyperdeck Composite Floor
- Key TV: all "one-piece" Coax Runs
- Giggy Box: 12v Distribution Box
- Color Coded & Unified Wiring System
- Flush Mount Heat Ducts
- My Keystone App for owners
- Solar Flex Protect 220
- Transferrable 1-year Base Warranty
- Transferrable 3-year Structural Warranty

ADDITIONAL STANDARD FEATURES:

(Bolded items are new for 2026)

- **Ducted 18k Furrion Chill Cube main A/C**
- **High Gloss Fiberglass Exterior White Fog Color**
- **Airxcel Entry Steps with Composite Treads**
- **Bronze Bushings in Axle Hangers**
- **Power Watchdog™ Safeview Smart Power Inlet**
- **Curt Helux Shock-Absorbing Pin Box**
- ½" Thick Shackle Plates with Greaseable Wet Bolts
- Key-Alike Lock System
- Power Fresh Water Tank Fill
- Oxygenics Shower Head
- Recessed Interior Lighting
- Dimmable Lighting Throughout
- Snap-in Ceiling Battens, Snap-in Crown Molding
- Road Armor Suspension System
- ABS - Anti-Lock Braking System
- Goodyear Endurance Tires
- Tankless Water Heater
- Climate Guard - Tested & Approved from 0° to 110°
- Heat, Light & Massage in Theater Seats
- Winegard Air 360+ Antenna with Roof Satellite Prep
- 12 Volt Heat Pads on all Tanks
- Soft Close Cabinet Doors with Hidden Hinges
- 12-volt Refrigerator
- Roller Shades throughout
- 50-amp Service
- Auto-Leveling, **4-point** Lippert Ground Control

AVAILABLE OPTIONS:

- Dual Pane Windows
- 15k Ducted Bedroom A/C
- Slide Toppers
- Solar Flex Discover 440i
- Solar Flex Outlast 660i
- (2) 100-amp hour heated Lithium Batteries

DISCLAIMER: Product information is as accurate as possible as of the date of this publication. All features, floor plans, and specifications are subject to change without notice. Pre-production estimated weights & lengths may be listed; visit Keystonerv.com for the most current product information and specifications.



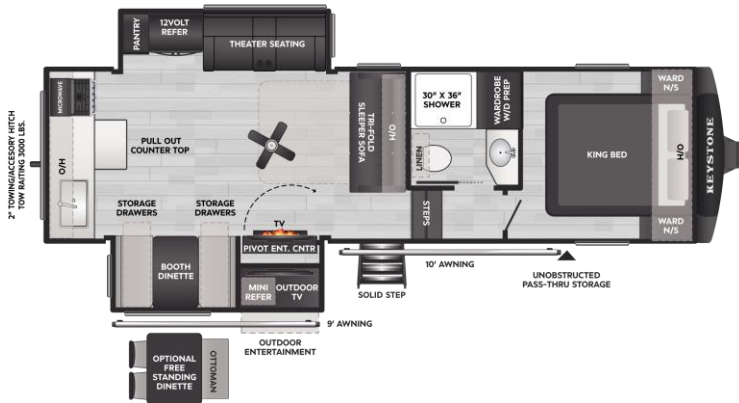
V2, revised 8/1/25

COUGAR

2026 HALF-TON FIFTH WHEEL

26RKE

2026 Electric Rack and Pinion Slide



SPECIFICATIONS:

Shipping Wt.	9,200
Carrying Cap.	1,800
Hitch Weight	1,715
Length	30'10"
Height*	12'7"
Fresh Water	54 gal.
Gray Water	60 gal.
Black Water	30 gal.
Sleeps Up To	6

*Single A/C
*12'9" with 2nd A/C

KEY FLOORPLAN ADVANTAGES:

- Wide-open Floorplan with Opposing Slide Outs
- King Bed Standard
- Perfect Length Around 30' Including Towing Hitch
- Outside Entertainment
 - 40" Smart TV, Refrigerator, and Metal Countertop with Pull-out Extension
- Washer Dryer Combo Prepped
- Booth Dinette with deep Storage Drawers
- Sunken "In-Wall" Linen Cabinet in Bathroom
- Hidden Utility / Closet / Pantry
- 12-volt Ceiling Fan
- Dual Power Awnings: 9 ft. and 10 ft.
- Entertainment Seating with Reclining Theater Seat and Tri-fold Sofa
- Unique Kitchen Pull-out Countertop with Bank of Drawers
- Towing Hitch with 3,000 lbs. Capacity

KEYSTONE EXCLUSIVE FEATURES:

- Water Management Center with Shutoff Valves
- HyperCore Composite Sidewalls
- Hyperdeck Composite Floor
- Key TV: all "one-piece" Coax Runs
- Giggy Box: 12v Distribution Box
- Color Coded & Unified Wiring System
- Flush Mount Heat Ducts
- My Keystone App for owners
- Solar Flex Protect 220
- Transferrable 1-year Base Warranty
- Transferrable 3-year Structural Warranty

ADDITIONAL STANDARD FEATURES:

(Bolded items are new for 2026)

- **Ducted 18k Furrion Chill Cube main A/C**
- **High Gloss Fiberglass Exterior White Fog Color**
- **Airxcel Entry Steps with Composite Treads**
- **Bronze Bushings in Axle Hangers**
- **Power Watchdog™ Safeview Smart Power Inlet**
- **Curt Helux Shock-Absorbing Pin Box**
- ½" Thick Shackles with Greaseable Wet Bolts
- Key-Alike Lock System
- Power Fresh Water Tank Fill
- Oxygenics Shower Head
- Recessed Interior Lighting
- Dimmable Lighting Throughout
- Snap-in Ceiling Battens, Snap-in Crown Molding
- Road Armor Suspension System
- ABS - Anti-Lock Braking System
- Goodyear Endurance Tires
- Tankless Water Heater
- Climate Guard - Tested & Approved from 0° to 110°
- Heat, Light & Massage in Theater Seats
- Winegard Air 360+ Antenna with Roof Satellite Prep
- 12 Volt Heat Pads on all Tanks
- Soft Close Cabinet Doors with Hidden Hinges
- 12-volt Refrigerator
- Roller Shades throughout
- 50-amp Service
- Auto-Leveling, **4-point** Lippert Ground Control

AVAILABLE OPTIONS:

- Dual Pane Windows
- 15k Ducted Bedroom A/C
- Slide Toppers
- Free Standing Dinette with Ottoman
- Solar Flex Discover 440i
- Solar Flex Outlast 660i
- (2) 100-amp hour heated Lithium Batteries

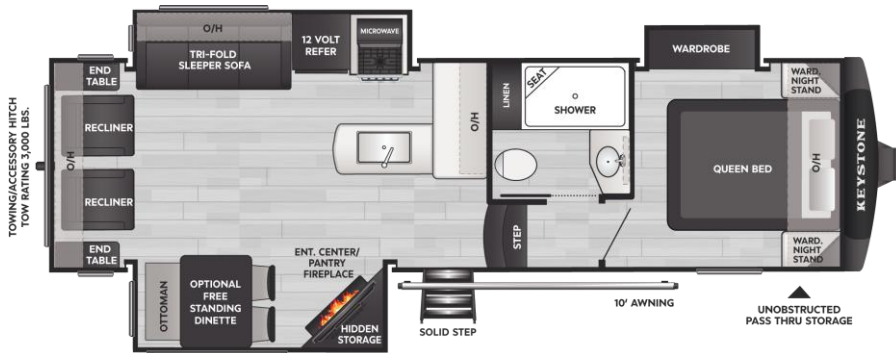
DISCLAIMER: Product information is as accurate as possible as of the date of this publication. All features, floor plans, and specifications are subject to change without notice. Pre-production estimated weights & lengths may be listed; visit Keystonerv.com for the most current product information and specifications.



COUGAR

2026 HALF-TON FIFTH WHEEL

27SGS



SPECIFICATIONS:

Shipping Wt.	8,343
Carrying Cap.	1,947
Hitch Weight	1,495
Length	30'6"
Height*	12'7"
Fresh Water	54 gal.
Gray Water	60 gal.
Black Water	30 gal.
Sleeps Up To	6

*Single A/C
*12'11" with 2nd A/C

KEY FLOORPLAN ADVANTAGES:

- Triple Slide, less than 31' Long, and less than 8500 lbs.
- Dinette, Recliners and Sofa in less than 31' Length
- Booth Dinette with 30" deep Storage Drawers
- Exterior & Interior Switch for Awning Operation
- Wardrobe Slide with Drawers and Hanging Storage
- Dinette on Campsite / Patio Side
- Walk-in Shower with Seat and Glass Doors
- Full Linen Cabinet in Bathroom
- Living room 50" Smart LED TV
- 19 Cabinet Doors & Drawers in Kitchen / Living Room
- 8 Windows throughout, all open
- 15 110-volt Outlets throughout
- 8 USB/USB-C Charging Ports throughout
- Towing Hitch with 3,000 lbs. Capacity

KEYSTONE EXCLUSIVE FEATURES:

- **Water Management Center with Shutoff Valves**
- HyperCore Composite Sidewalls
- Hyperdeck Composite Floor
- Key TV: all "one-piece" Coax Runs
- Giggy Box: 12v Distribution Box
- Color Coded & Unified Wiring System
- Flush Mount Heat Ducts
- My Keystone App for owners
- Solar Flex Protect 220
- Transferrable 1-year Base Warranty
- Transferrable 3-year Structural Warranty

ADDITIONAL STANDARD FEATURES:

(Bolded items are new for 2026)

- **Ducted 18k Furrion Chill Cube main A/C**
- **High Gloss Fiberglass Exterior White Fog Color**
- **Airxcel Entry Steps with Composite Treads**
- **Bronze Bushings in Axle Hangers**
- **Power Watchdog™ Safeview Smart Power Inlet**
- ½" Thick Shackle Plates with Greaseable Wet Bolts
- Key-Alike Lock System
- Power Fresh Water Tank Fill
- Oxygenics Shower Head
- Recessed Interior Lighting
- Dimmable Lighting Throughout
- Snap-in Ceiling Battens, Snap-in Crown Molding
- Road Armor Suspension System
- ABS - Anti-Lock Braking System
- Goodyear Endurance Tires
- Tankless Water Heater
- Climate Guard - Tested & Approved from 0° to 110°
- Heat, Light & Massage in Theater Seats
- Winegard Air 360+ Antenna with Roof Satellite Prep
- 12 Volt Heat Pads on all Tanks
- Soft Close Cabinet Doors with Hidden Hinges
- 12-volt Refrigerator
- Roller Shades throughout
- 50-amp Service
- Auto-Leveling, **4-point** Lippert Ground Control

AVAILABLE OPTIONS:

- Dual Pane Windows
- 15k Ducted Bedroom A/C
- Slide Toppers
- Free Standing Dinette with Ottoman
- Solar Flex Discover 440i
- Solar Flex Outlast 660i
- (2) 100-amp hour heated Lithium Batteries

DISCLAIMER: Product information is as accurate as possible as of the date of this publication. All features, floor plans, and specifications are subject to change without notice. Pre-production estimated weights & lengths may be listed; visit Keystonerv.com for the most current product information and specifications.



COUGAR

2026 HALF-TON FIFTH WHEEL

28RLI

Electric Rack and Pinion Slide



SPECIFICATIONS:

Shipping Wt.	9,050
Carrying Cap.	1,950
Hitch Weight	1,435
Length	32'8"
Height*	12'7"
Fresh Water	54 gal.
Gray Water	60 gal.
Black Water	30 gal.
Sleeps Up To	6

*Single A/C
*12'9" with 2nd A/C

KEY FLOORPLAN ADVANTAGES:

- More Kitchen Countertop Space than Similar 41' Fifth Wheels
- King Bed Standard
- Prep Space on Each Side of the Stove
- Perfect Length under 33'
- Larger Windows than any Similar Rear Lounge Model
- Washer Dryer Combo Prepped
- Booth Dinette with Deep Storage Drawers
- Dual awnings
- Sunken "In-Wall" Linen Cabinet in Bathroom
- Hidden pantry / utility / closet with cordless vac prep
- Travel access to refrigerator and bathroom

KEYSTONE EXCLUSIVE FEATURES:

- Water Management Center with Shutoff Valves
- HyperCore Composite Sidewalls
- Hyperdeck Composite Floor
- Key TV: all "one-piece" Coax Runs
- Giggy Box: 12v Distribution Box
- Color Coded & Unified Wiring System
- Flush Mount Heat Ducts
- My Keystone App for owners
- Solar Flex Protect 220
- Transferrable 1-year Base Warranty
- Transferrable 3-year Structural Warranty

ADDITIONAL STANDARD FEATURES:

(Bolded items are new for 2026)

- **Ducted 18k Furrion Chill Cube main A/C**
- **High Gloss Fiberglass Exterior White Fog Color**
- **Airxcel Entry Steps with Composite Treads**
- **Bronze Bushings in Axle Hangers**
- **Power Watchdog™ Safeview Smart Power Inlet**
- **Curt Helux Shock-Absorbing Pin Box**
- ½" Thick Shackles with Greaseable Wet Bolts
- Key-Alike Lock System
- Power Fresh Water Tank Fill
- Oxygenics Shower Head
- Recessed Interior Lighting
- Dimmable Lighting Throughout
- Snap-in Ceiling Battens, Snap-in Crown Molding
- Road Armor Suspension System
- ABS - Anti-Lock Braking System
- Goodyear Endurance Tires
- Tankless Water Heater
- Climate Guard - Tested & Approved from 0° to 110°
- Heat, Light & Massage in Theater Seats
- Winegard Air 360+ Antenna with Roof Satellite Prep
- 12 Volt Heat Pads on all Tanks
- Soft Close Cabinet Doors with Hidden Hinges
- 12-volt Refrigerator
- Roller Shades throughout
- 50-amp Service
- Auto-Leveling, **4-point** Lippert Ground Control

AVAILABLE OPTIONS:

- Dual Pane Windows
- 15k Ducted Bedroom A/C
- Slide Toppers
- Free Standing Dinette with Ottoman
- Solar Flex Discover 440i
- Solar Flex Outlast 660i
- (2) 100-amp hour heated Lithium Batteries

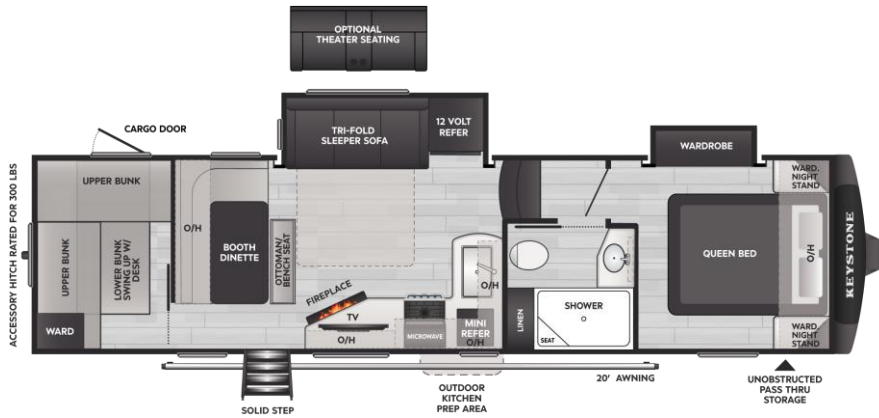
DISCLAIMER: Product information is as accurate as possible as of the date of this publication. All features, floor plans, and specifications are subject to change without notice. Pre-production estimated weights & lengths may be listed; visit Keystonerv.com for the most current product information and specifications.



COUGAR

2026 HALF-TON FIFTH WHEEL

29BHL



SPECIFICATIONS:

Shipping Wt.	8,345
Carrying Cap.	2,655
Hitch Weight	1,610
Length	33'4"
Height*	12'7"
Fresh Water	54 gal.
Gray Water	60 gal.
Black Water	30 gal.
Sleeps Up To	10

*Single A/C
*12'11" with 2nd A/C

KEY FLOORPLAN ADVANTAGES:

- Under 34' Total Length and Sleeps up to 10 People
- Cargo Door to Large Bunk Room Cargo Area
- Wardrobe Slide with Drawers and Hanging Storage
- Exterior & Interior Switch for Awning Operation
- L-Shape Dinette with Ottoman with Great TV Viewing
- Fold-up Bunk Converts to a Desk
- Walk-in Shower with Seat and Glass Doors
- Full Linen Cabinet in Bathroom
- Living Room 40" Smart LED TV
- Electric Fireplace Providing 5000 btu of Heat
- 14 Cabinet Doors & Drawers in Kitchen / Living Room
- 10 Windows throughout, all open
- 15 110-volt Outlets throughout
- 8 USB/USB-C Charging Ports throughout
- Accessory Hitch for Bike Rack
- 20' of Awning Coverage
- Outside Kitchen Prep with Refrigerator

KEYSTONE EXCLUSIVE FEATURES:

- **Water Management Center with Shutoff Valves**
- HyperCore Composite Sidewalls
- Hyperdeck Composite Floor
- Key TV: all "one-piece" Coax Runs
- Giggy Box: 12v Distribution Box
- Color Coded & Unified Wiring System
- Flush Mount Heat Ducts
- My Keystone App for owners
- Solar Flex Protect 220
- Transferrable 1-year Base Warranty
- Transferrable 3-year Structural Warranty

ADDITIONAL STANDARD FEATURES:

(Bolded items are new for 2026)

- **Ducted 18k Furrion Chill Cube main A/C**
- **High Gloss Fiberglass Exterior White Fog Color**
- **Airxcel Entry Steps with Composite Treads**
- **Bronze Bushings in Axle Hangers**
- **Power Watchdog™ Safeview Smart Power Inlet**
- ½" Thick Shackle Plates with Greaseable Wet Bolts
- Key-Alike Lock System
- Power Fresh Water Tank Fill
- Oxygenics Shower Head
- Recessed Interior Lighting
- Dimmable Lighting Throughout
- Snap-in Ceiling Battens, Snap-in Crown Molding
- Road Armor Suspension System
- ABS - Anti-Lock Braking System
- Goodyear Endurance Tires
- Tankless Water Heater
- Climate Guard - Tested & Approved from 0° to 110°
- Heat, Light & Massage in Theater Seats
- Winegard Air 360+ Antenna with Roof Satellite Prep
- 12 Volt Heat Pads on all Tanks
- Soft Close Cabinet Doors with Hidden Hinges
- 12-volt Refrigerator
- Roller Shades throughout
- 50-amp Service
- Auto-Leveling, **4-point** Lippert Ground Control

AVAILABLE OPTIONS:

- Theater Seating
- Dual Pane Windows
- 15k Ducted Bedroom A/C
- Slide Toppers
- Solar Flex Discover 440i
- Solar Flex Outlast 660i
- (2) 100-amp hour heated Lithium Batteries

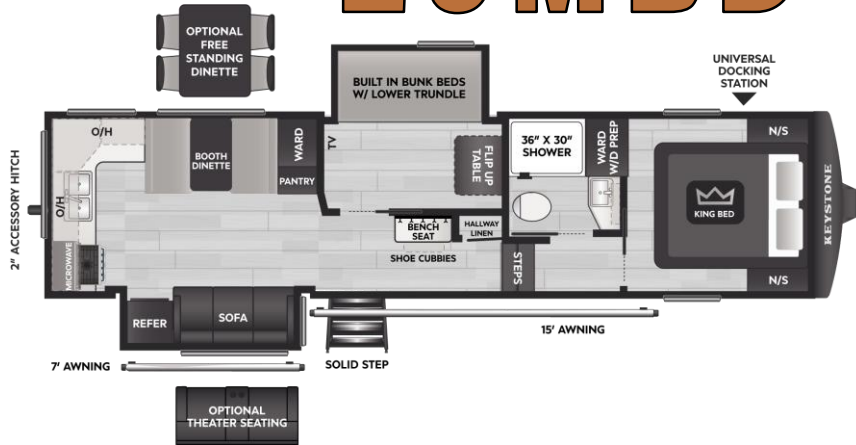
DISCLAIMER: Product information is as accurate as possible as of the date of this publication. All features, floor plans, and specifications are subject to change without notice. Pre-production estimated weights & lengths may be listed; visit Keystonerv.com for the most current product information and specifications.



COUGAR

2026 HALF-TON FIFTH WHEEL

29MBD



SPECIFICATIONS:

Shipping Wt.	9,235
Carrying Cap.	2,265
Hitch Weight	1,635
Length	33'11"
Height*	12'8"
Fresh Water	54 gal.
Gray Water	60 gal.
Black Water	30 gal.
Sleeps Up To	10

*Single A/C
*12'11" with 2nd A/C

KEY FLOORPLAN ADVANTAGES:

- Under 34' Total Length and Sleeps up to 10 People
- Entrance Bench for Coat and Shoe Storage
- Multi-Functional Hallway Linen Cabinet
- Residential Built-In Bunks with Ladder
- Extra Thick Bunk Bed Mattresses
- Master Suite King Bed Standard
- Pull-out Trundle Bed for Extra Sleeping
- Flip-up Table in Bunkroom for Desk, Gaming, or Dining
- Exterior & Interior Switch for Awning Operation
- Living Room 40" Smart LED TV
- 9 Windows throughout, all open
- Washer and Dryer Prepped
- USB/USB-C Charging Ports throughout
- Accessory Hitch for Bike Rack
- 22' of Awning Coverage

KEYSTONE EXCLUSIVE FEATURES:

- **Water Management Center with Shutoff Valves**
- HyperCore Composite Sidewalls
- Hyperdeck Composite Floor
- Key TV: all "one-piece" Coax Runs
- Giggy Box: 12v Distribution Box
- Color Coded & Unified Wiring System
- Flush Mount Heat Ducts
- My Keystone App for owners
- Solar Flex Protect 220
- Transferrable 1-year Base Warranty
- Transferrable 3-year Structural Warranty

ADDITIONAL STANDARD FEATURES:

(Bolded items are new for 2026)

- **Ducted 18k Furrion Chill Cube main A/C**
- **High Gloss Fiberglass Exterior White Fog Color**
- **Airxcel Entry Steps with Composite Treads**
- **Bronze Bushings in Axle Hangers**
- **Power Watchdog™ Safeview Smart Power Inlet**
- ½" Thick Shackles with Greaseable Wet Bolts
- Key-Alike Lock System
- Power Fresh Water Tank Fill
- Oxygenics Shower Head
- Recessed Interior Lighting
- Dimmable Lighting Throughout
- Snap-in Ceiling Battens, Snap-in Crown Molding
- Road Armor Suspension System
- ABS - Anti-Lock Braking System
- Goodyear Endurance Tires
- Tankless Water Heater
- Climate Guard - Tested & Approved from 0° to 110°
- Heat, Light & Massage in Theater Seats
- Winegard Air 360+ Antenna with Roof Satellite Prep
- 12 Volt Heat Pads on all Tanks
- Soft Close Cabinet Doors with Hidden Hinges
- 12-volt Refrigerator
- Roller Shades throughout
- 50-amp Service
- Auto-Leveling, **4-point** Lippert Ground Control

AVAILABLE OPTIONS:

- Theater Seating
- Dual Pane Windows
- 15k Ducted Bedroom A/C
- Slide Toppers
- Solar Flex Discover 440i
- Solar Flex Outlast 660i
- (2) 100-amp hour heated Lithium Batteries

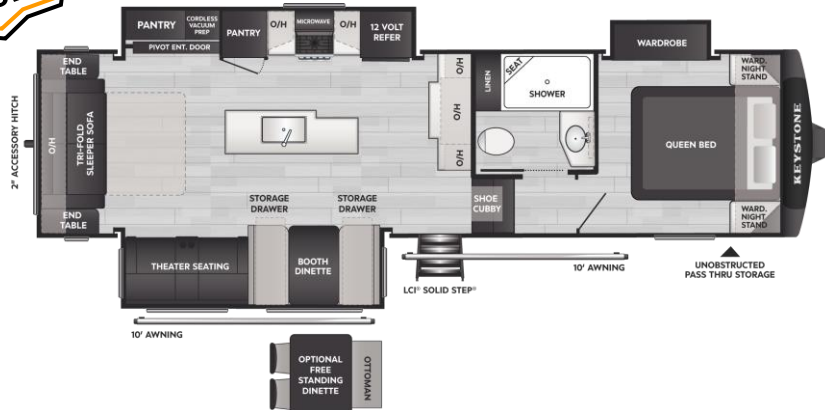
DISCLAIMER: Product information is as accurate as possible as of the date of this publication. All features, floor plans, and specifications are subject to change without notice. Pre-production estimated weights & lengths may be listed; visit Keystonerv.com for the most current product information and specifications.



COUGAR

2026 HALF-TON FIFTH WHEEL

29RLI



SPECIFICATIONS:

Shipping Wt.	8,896
Carrying Cap.	2,107
Hitch Weight	1,630
Length	32'9"
Height*	12'7"
Fresh Water	54 gal.
Gray Water	60 gal.
Black Water	30 gal.
Sleeps Up To	6

*Single A/C
*12'11" with 2nd A/C

KEY FLOORPLAN ADVANTAGES:

- Travel Access to Refrigerator and Bathroom
- Dinette, Theater Seating and Sofa in less than 33'
- Wardrobe Slide with Drawers and Hanging Storage
- Booth Dinette with 30" deep Storage Drawers
- Exterior & Interior Switch for Awning Operation
- Large Island in Kitchen
- Full Pantry in Kitchen
- Walk-in Shower with Seat and Glass Doors
- Full Linen Cabinet in Bathroom
- Living Room 50" Smart LED TV
- 27 Cabinet Doors & Drawers in Kitchen / Living Room
- 9 Windows throughout, all open
- 15 110-volt Outlets throughout
- 8 USB/USB-C Charging Ports throughout
- Total 20' of Awning Coverage

KEYSTONE EXCLUSIVE FEATURES:

- Water Management Center with Shutoff Valves
- HyperCore Composite Sidewalls
- Hyperdeck Composite Floor
- Key TV: all "one-piece" Coax Runs
- Giggy Box: 12v Distribution Box
- Color Coded & Unified Wiring System
- Flush Mount Heat Ducts
- My Keystone App for owners
- Solar Flex Protect 220
- Transferrable 1-year Base Warranty
- Transferrable 3-year Structural Warranty

ADDITIONAL STANDARD FEATURES:

(Bolded items are new for 2026)

- **Ducted 18k Furrion Chill Cube main A/C**
- **High Gloss Fiberglass Exterior White Fog Color**
- **Airxcel Entry Steps with Composite Treads**
- **Bronze Bushings in Axle Hangers**
- **Power Watchdog™ Safeview Smart Power Inlet**
- ½" Thick Shackle Plates with Greaseable Wet Bolts
- Key-Alike Lock System
- Power Fresh Water Tank Fill
- Oxygenics Shower Head
- Recessed Interior Lighting
- Dimmable Lighting Throughout
- Snap-in Ceiling Battens, Snap-in Crown Molding
- Road Armor Suspension System
- ABS - Anti-Lock Braking System
- Goodyear Endurance Tires
- Tankless Water Heater
- Climate Guard - Tested & Approved from 0° to 110°
- Heat, Light & Massage in Theater Seats
- Winegard Air 360+ Antenna with Roof Satellite Prep
- 12 Volt Heat Pads on all Tanks
- Soft Close Cabinet Doors with Hidden Hinges
- 12-volt Refrigerator
- Roller Shades throughout
- 50-amp Service
- Auto-Leveling, **4-point** Lippert Ground Control

AVAILABLE OPTIONS:

- Dual Pane Windows
- 15k Ducted Bedroom A/C
- Slide Toppers
- Free Standing Dinette with Ottoman
- Solar Flex Discover 440i
- Solar Flex Outlast 660i
- (2) 100-amp hour heated Lithium Batteries

DISCLAIMER: Product information is as accurate as possible as of the date of this publication. All features, floor plans, and specifications are subject to change without notice. Pre-production estimated weights & lengths may be listed; visit Keystonerv.com for the most current product information and specifications.



COUGAR

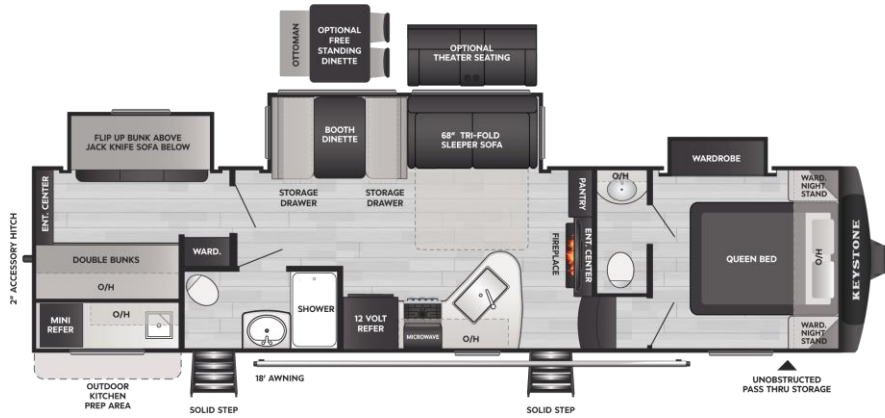
2026 HALF-TON FIFTH WHEEL

32BHS

SPECIFICATIONS:

Shipping Wt.	9,428
Carrying Cap.	2,072
Hitch Weight	1,570
Length	35'8"
Height*	12'7"
Fresh Water	54 gal.
Gray Water	60 gal.
Black Water	60 gal.
Sleeps Up To	10

*Single A/C
*12'11" with 2nd A/C



KEY FLOORPLAN ADVANTAGES:

- Bath and a half Bunkhouse Model
- 4 Bunks / Beds in Bunk Area
- Booth Dinette with 30" deep Storage Drawers
- Exterior & Interior Switch for Awning Operation
- Full-sized Outside Kitchen with Sink, Refrigerator, Countertop, Overhead Cabinets and Sink
- Wardrobe Slide with Drawers and Hanging Storage
- Outside Entrance into Main Bathroom
- Living Room 40" Smart LED TV
- Electric Fireplace Providing 5000 btu of Heat
- 15 Cabinet Doors & Drawers in Kitchen / Living Room
- 8 Windows throughout, all open
- 15 110-volt Outlets throughout
- 8 USB/USB-C Charging Ports throughout
- 18' of Awning Coverage

KEYSTONE EXCLUSIVE FEATURES:

- Water Management Center with Shutoff Valves
- HyperCore Composite Sidewalls
- Hyperdeck Composite Floor
- Key TV: all "one-piece" Coax Runs
- Giggy Box: 12v Distribution Box
- Color Coded & Unified Wiring System
- Flush Mount Heat Ducts
- My Keystone App for owners
- Solar Flex Protect 220
- Transferrable 1-year Base Warranty
- Transferrable 3-year Structural Warranty

ADDITIONAL STANDARD FEATURES:

(Bolded items are new for 2026)

- **Ducted 18k Furrion Chill Cube main A/C**
- **High Gloss Fiberglass Exterior White Fog Color**
- **Airxcel Entry Steps with Composite Treads**
- **Bronze Bushings in Axle Hangers**
- **Power Watchdog™ Safeview Smart Power Inlet**
- ½" Thick Shackle Plates with Greaseable Wet Bolts
- Key-Alike Lock System
- Power Fresh Water Tank Fill
- Oxygenics Shower Head
- Recessed Interior Lighting
- Dimmable Lighting Throughout
- Snap-in Ceiling Battens, Snap-in Crown Molding
- Road Armor Suspension System
- ABS - Anti-Lock Braking System
- Goodyear Endurance Tires
- Tankless Water Heater
- Climate Guard - Tested & Approved from 0° to 110°
- Heat, Light & Massage in Theater Seats
- Winegard Air 360+ Antenna with Roof Satellite Prep
- 12 Volt Heat Pads on all Tanks
- Soft Close Cabinet Doors with Hidden Hinges
- 12-volt Refrigerator
- Roller Shades throughout
- 50-amp Service
- Auto-Leveling, **4-point** Lippert Ground Control

AVAILABLE OPTIONS:

- Theater Seating
- Dual Pane Windows
- 15k Ducted Bedroom A/C
- Slide Toppers
- Free Standing Dinette
- Solar Flex Discover 440i
- Solar Flex Outlast 660i
- (2) 100-amp hour heated Lithium Batteries

DISCLAIMER: Product information is as accurate as possible as of the date of this publication. All features, floor plans, and specifications are subject to change without notice. Pre-production estimated weights & lengths may be listed; visit Keystonerv.com for the most current product information and specifications.

