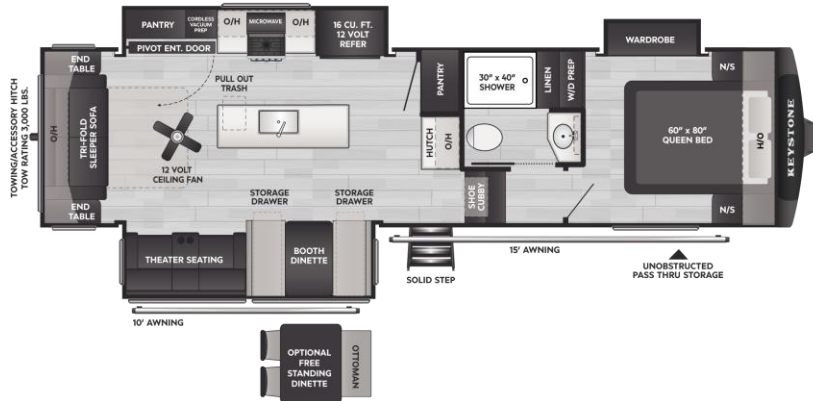




# COUGAR

2026 FULL SIZE FIFTH WHEEL

## 290RLS



### SPECIFICATIONS:

Shipping Wt.	10,435
Carrying Cap.	2,465
Hitch Weight	2,060
Length	33'8"
Height	13'4"
Fresh Water	75 gal.
Gray Water	76 gal.
Black Water	38 gal.
Sleeps Up To	6

### KEY FLOORPLAN ADVANTAGES:

- Under 35' for easy State Park access
- Flush Floor Kitchen and Living Room Slideouts
- Extra large Island with Pull-out Trash Drawer
- Full Pantry with Coffee Station / Hutch
- Pivot Hinged Entertainment Center with Hidden Utility / Closet / Pantry
- 16 cu. ft. 12-volt Refrigerator with Glass Front
- 12-volt Ceiling Fan
- Wardrobe Slide with Drawers and Hanging Storage
- Stackable Washer and Dryer Prep
- 25' of Awning Coverage
- Living Room 50" Smart LED TV
- Exterior & Interior Switch for Awning Operation
- 26 Cabinet Doors & Drawers in Kitchen / Living Room
- 9 windows Throughout, all open
- Towing Hitch with 3,000 lbs. Capacity
- Pull-out Trash Drawer with Paper Towel Holder
- Available in (4) Full Body Paint Colors

### KEYSTONE EXCLUSIVE FEATURES:

- **Water Management Center with Shutoff Valves**
- HyperCore Composite Sidewalls
- Key TV: all "one-piece" Coax Runs
- Giggy Box: 12v Distribution Box
- Color Coded & Unified Wiring System
- Flush Mount Heat Ducts
- My Keystone App for owners
- Solar Flex Protect 220
- Transferrable 1-year Base Warranty
- Transferrable 3-year Structural Warranty

### ADDITIONAL STANDARD FEATURES:

(Bolded items are new for 2026)

- **High Gloss Fiberglass Exterior White Fog Color**
- **Airxcel Entry Steps with Composite Treads**
- **Bronze Bushings in Axle Hangers**
- **Power Watchdog™ Safeview Smart Power Inlet**
- **Curt Helux Shock-Absorbing Pin Box**
- **Solid Surface Bathroom Vanity Countertop**
- 33,000 BTU Cooling System
  - 18k Furrion Chill Cube main A/C
  - 15k Furrion bedroom A/C
- 3<sup>rd</sup> A/C Prep, wired to Maxx Fan location
- H-Rated 16ply Tires with 8-year Warranty
- 1/2" Thick Shackle Plates with Greaseable Wet Bolts
- Road Armor Suspension System
- ABS - Anti-Lock Braking System
- Key-Alike Lock System
- Power Fresh Water Tank Fill
- Oxygenics Shower Head
- Recessed Interior Lighting
- Dimmable Lighting Throughout
- Snap-in Ceiling Battens, Snap-in Crown Molding
- Tankless Water Heater
- Climate Guard - Tested & Approved from 0° to 110°
- 12 Volt Heat Pads on all Tanks
- Heat, Light & Massage in Theater Seats
- Winegard Air 360+ Antenna with Roof Satellite Prep
- Soft Close Cabinet Doors with Hidden Hinges
- 12-volt Refrigerator
- Roller Shades throughout
- 50-amp Service
- Auto-Leveling, **4-point** Lippert Ground Control

### AVAILABLE OPTIONS:

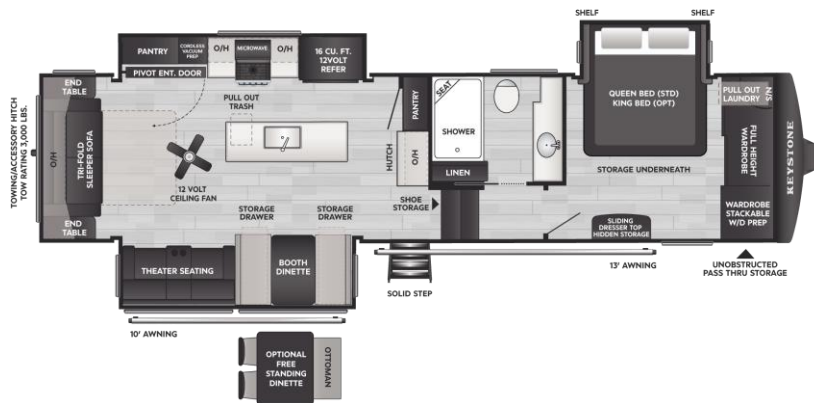
- Dual Pane Windows
- Slide Toppers
- Free Standing Dinette with Ottoman or Booth Dinette
- Solar Flex Discover 440i
- Solar Flex Outlast 660i
- (2) 100-amp hour heated Lithium Batteries
- Full Body Paint

DISCLAIMER: Product information is as accurate as possible as of the date of this publication. All features, floor plans, and specifications are subject to change without notice. Pre-production estimated weights & lengths may be listed; visit [Keystonev.com](http://Keystonev.com) for the most current product information and specifications.

# COUGAR

2026 FULL SIZE FIFTH WHEEL

## 316RLS



### SPECIFICATIONS:

Shipping Wt.	10,792
Carrying Cap.	2,108
Hitch Weight	1,900
Length	35'8"
Height	13'4"
Fresh Water	75 gal.
Gray Water	76 gal.
Black Water	38 gal.
Sleeps Up To	6

### KEY FLOORPLAN ADVANTAGES:

- Flush Floor Kitchen and Living Room Slideouts
- Pivot Hinged Entertainment Center with Hidden Utility / Closet / Pantry
- Stackable Washer / Dryer Prepped
- 16 cu. ft. 12-volt Refrigerator with Glass Front
- 12-volt Ceiling Fan
- 23' of Total Awning Coverage: 13 ft. and 10 ft.
- Exterior and Interior Switch for Awning Operation
- Bed Slideout with Standard Queen or Optional King
- Convenient Laundry Hamper in Master Bedroom
- 22 Cabinet Doors & Drawers in Kitchen / Living Room
- 12 Windows Throughout, all open
- Living Room 50" Smart LED TV
- 8 USB/USB-C Charging Ports Throughout
- Towing Hitch with 3,000 lbs. Capacity
- Pull-out Trash Drawer with Paper Towel Holder
- Available in (4) Full Body Paint Colors

### KEYSTONE EXCLUSIVE FEATURES:

- **Water Management Center with Shutoff Valves**
- HyperCore Composite Sidewalls
- Key TV: all "one-piece" Coax Runs
- Giggy Box: 12v Distribution Box
- Color Coded & Unified Wiring System
- Flush Mount Heat Ducts
- My Keystone App for owners
- Solar Flex Protect 220
- Transferrable 1-year Base Warranty
- Transferrable 3-year Structural Warranty

### ADDITIONAL STANDARD FEATURES:

(Bolded items are new for 2026)

- **High Gloss Fiberglass Exterior White Fog Color**
- **Airxcel Entry Steps with Composite Treads**
- **Bronze Bushings in Axle Hangers**
- **Power Watchdog™ Safeview Smart Power Inlet**
- **Curt Helux Shock-Absorbing Pin Box**
- **Solid Surface Bathroom Vanity Countertop**
- 33,000 BTU Cooling System
  - 18k Furrion Chill Cube main A/C
  - 15k Furrion bedroom A/C
- 3<sup>rd</sup> A/C Prep, wired to Maxx Fan location
- H-Rated 16ply Tires with 8-year Warranty
- ½" Thick Shackle Plates with Greaseable Wet Bolts
- Road Armor Suspension System
- ABS - Anti-Lock Braking System
- Key-Alike Lock System
- Power Fresh Water Tank Fill
- Oxygenics Shower Head
- Recessed Interior Lighting
- Dimmable Lighting Throughout
- Snap-in Ceiling Battens, Snap-in Crown Molding
- Tankless Water Heater
- Climate Guard - Tested & Approved from 0° to 110°
- 12 Volt Heat Pads on all Tanks
- Heat, Light & Massage in Theater Seats
- Winegard Air 360+ Antenna with Roof Satellite Prep
- Soft Close Cabinet Doors with Hidden Hinges
- 12-volt Refrigerator
- Roller Shades throughout
- 50-amp Service
- Auto-Leveling, **4-point** Lippert Ground Control

### AVAILABLE OPTIONS:

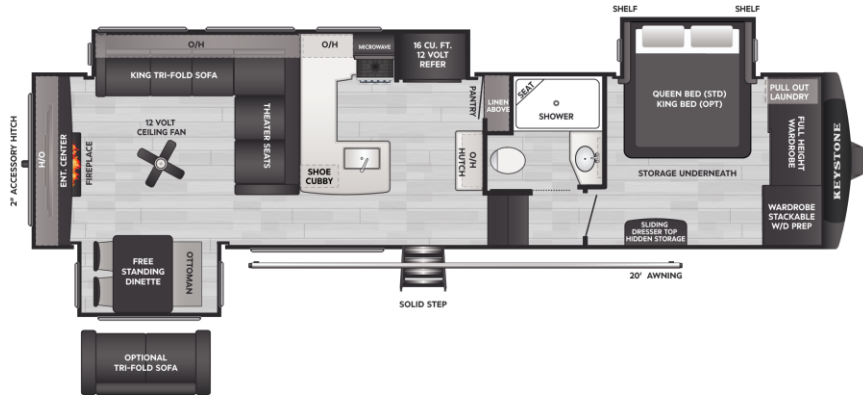
- Dual Pane Windows
- Slide Toppers
- King Bed
- Free Standing Dinette with Ottoman or Booth Dinette
- Solar Flex Discover 440i
- Solar Flex Outlast 660i
- (2) 100-amp hour heated Lithium Batteries
- Full Body Paint

DISCLAIMER: Product information is as accurate as possible as of the date of this publication. All features, floor plans, and specifications are subject to change without notice. Pre-production estimated weights & lengths may be listed; visit [Keystonerv.com](http://Keystonerv.com) for the most current product information and specifications.

# COUGAR

2026 FULL SIZE FIFTH WHEEL

## 320RDS



### SPECIFICATIONS:

Shipping Wt.	11,133
Carrying Cap.	2,617
Hitch Weight	1,775
Length	36'10"
Height	13'4"
Fresh Water	75 gal.
Gray Water	76 gal.
Black Water	38 gal.
Sleeps Up To	6

### KEY FLOORPLAN ADVANTAGES:

- Panoramic view of Campsite
- Largest Sectional Sofa with Recliners in Mid-pro
- Stackable Washer / Dryer Prepped
- 16 cu. ft. 12-volt Refrigerator with Glass Front
- Full Pantry with Coffee Station / Hutch
- 12-volt Ceiling Fan
- 20' of Total Awning Coverage
- Exterior and Interior Switch for Awning Operation
- Bed Slideout with Standard Queen or Optional King
- 26 Cabinet Doors & Drawers in Kitchen / Living Room
- 12 Windows throughout, all open
- Living Room 60" Smart LED TV on Electric Televator
- 8 USB/USB-C Charging Ports throughout
- Bedroom Dresser with Sliding Top for Hidden Storage
- Available in (4) Full Body Paint Colors

### KEYSTONE EXCLUSIVE FEATURES:

- **Water Management Center with Shutoff Valves**
- HyperCore Composite Sidewalls
- Key TV: all "one-piece" Coax Runs
- Giggy Box: 12v Distribution Box
- Color Coded & Unified Wiring System
- Flush Mount Heat Ducts
- My Keystone App for owners
- Solar Flex Protect 220
- Transferrable 1-year Base Warranty
- Transferrable 3-year Structural Warranty

### ADDITIONAL STANDARD FEATURES:

(Bolded items are new for 2026)

- **High Gloss Fiberglass Exterior White Fog Color**
- **Airxcel Entry Steps with Composite Treads**
- **Bronze Bushings in Axle Hangers**
- **Power Watchdog™ Safeview Smart Power Inlet**
- **Curt Helux Shock-Absorbing Pin Box**
- **Solid Surface Bathroom Vanity Countertop**
- 33,000 BTU Cooling System
  - 18k Furrion Chill Cube main A/C
  - 15k Furrion bedroom A/C
- 3<sup>rd</sup> A/C Prep, wired to Maxx Fan location
- H-Rated 16ply Tires with 8-year Warranty
- 1/2" Thick Shackle Plates with Greaseable Wet Bolts
- Road Armor Suspension System
- ABS - Anti-Lock Braking System
- Key-Alike Lock System
- Power Fresh Water Tank Fill
- Oxygenics Shower Head
- Recessed Interior Lighting
- Dimmable Lighting Throughout
- Snap-in Ceiling Battens, Snap-in Crown Molding
- Tankless Water Heater
- Climate Guard - Tested & Approved from 0° to 110°
- 12 Volt Heat Pads on all Tanks
- Heat, Light & Massage in Theater Seats
- Winegard Air 360+ Antenna with Roof Satellite Prep
- Soft Close Cabinet Doors with Hidden Hinges
- 12-volt Refrigerator
- Roller Shades throughout
- 50-amp Service
- Auto-Leveling, **4-point** Lippert Ground Control

### AVAILABLE OPTIONS:

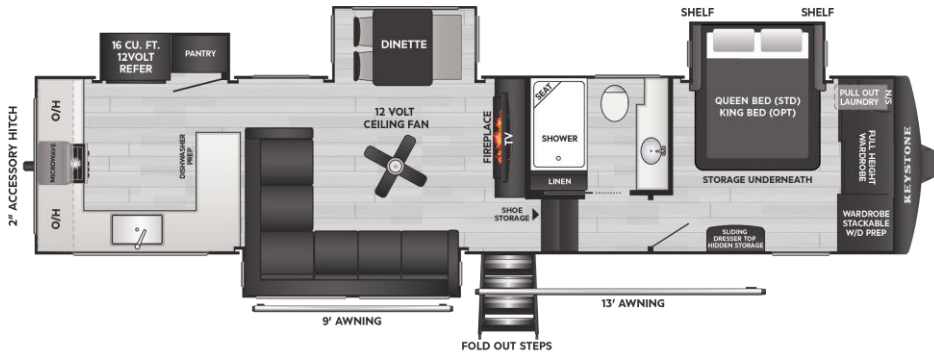
- Dual Pane Windows
- Slide Toppers
- King Bed
- Trifold Sofa in place of Dinette
- Solar Flex Discover 440i
- Solar Flex Outlast 660i
- (2) 100-amp hour heated Lithium Batteries
- Full Body Paint

DISCLAIMER: Product information is as accurate as possible as of the date of this publication. All features, floor plans, and specifications are subject to change without notice. Pre-production estimated weights & lengths may be listed; visit [Keystonerv.com](http://Keystonerv.com) for the most current product information and specifications.

# COUGAR

2026 FULL SIZE FIFTH WHEEL

## 350LLK



### SPECIFICATIONS:

Shipping Wt.	11,820
Carrying Cap.	3,180
Hitch Weight	2,205
Length	39'3"
Height	13'4"
Fresh Water	75 gal.
Gray Water	76 gal.
Black Water	38 gal.
Sleeps Up To	6

### KEY FLOORPLAN ADVANTAGES:

- Panoramic view of Campsite from Kitchen and Sofa
- More Kitchen Counterspace than Competitors Model
- Refrigerator on the Rear Wall Take a Beating, NOT Ours!
- Dishwasher Prepped
- Largest Sectional Sofa with Recliners in Mid-pro
- Stackable Washer / Dryer Prepped
- 16 cu. ft. 12-volt Refrigerator with Glass Front
- Full Pantry
- 12-volt Ceiling Fan
- 22' of Total Awning Coverage
- Exterior and Interior Switch for Awning Operation
- Bed Slideout with Standard Queen or Optional King
- 14 Windows throughout, all open
- Living Room 60" Smart LED TV
- USB/USB-C Charging Ports throughout
- Bedroom Dresser with Sliding Top for Hidden Storage
- Available in (3) Full Body Paint Colors

### KEYSTONE EXCLUSIVE FEATURES:

- **Water Management Center with Shutoff Valves**
- HyperCore Composite Sidewalls
- Key TV: all "one-piece" Coax Runs
- Giggy Box: 12v Distribution Box
- Color Coded & Unified Wiring System
- Flush Mount Heat Ducts
- My Keystone App for owners
- Solar Flex Protect 220
- Transferrable 1-year Base Warranty
- Transferrable 3-year Structural Warranty

### ADDITIONAL STANDARD FEATURES:

(Bolded items are new for 2026)

- **High Gloss Fiberglass Exterior White Fog Color**
- **Airxcel Entry Steps with Composite Treads**
- **Bronze Bushings in Axle Hangers**
- **Power Watchdog™ Safeview Smart Power Inlet**
- **Curt Helux Shock-Absorbing Pin Box**
- **Solid Surface Bathroom Vanity Countertop**
- 33,000 BTU Cooling System
  - 18k Furrion Chill Cube main A/C
  - 15k Furrion bedroom A/C
- 3<sup>rd</sup> A/C Prep, wired to Maxx Fan location
- H-Rated 16ply Tires with 8-year Warranty
- ½" Thick Shackle Plates with Greaseable Wet Bolts
- Road Armor Suspension System
- ABS - Anti-Lock Braking System
- Key-Alike Lock System
- Power Fresh Water Tank Fill
- Oxygenics Shower Head
- Recessed Interior Lighting
- Dimmable Lighting Throughout
- Snap-in Ceiling Battens, Snap-in Crown Molding
- Tankless Water Heater
- Climate Guard - Tested & Approved from 0° to 110°
- 12 Volt Heat Pads on all Tanks
- Heat, Light & Massage in Theater Seats
- Winegard Air 360+ Antenna with Roof Satellite Prep
- Soft Close Cabinet Doors with Hidden Hinges
- 12-volt Refrigerator
- Roller Shades throughout
- 50-amp Service
- Auto-Leveling, **4-point** Lippert Ground Control

### AVAILABLE OPTIONS:

- Dual Pane Windows
- Slide Toppers
- King Bed
- Solar Flex Discover 440i
- Solar Flex Outlast 660i
- (2) 100-amp hour heated Lithium Batteries
- Full Body Paint

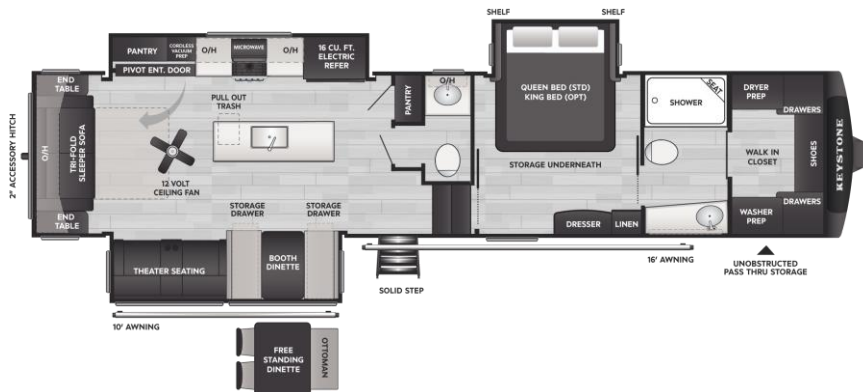
DISCLAIMER: Product information is as accurate as possible as of the date of this publication. All features, floor plans, and specifications are subject to change without notice. Pre-production estimated weights & lengths may be listed; visit [Keystonerv.com](http://Keystonerv.com) for the most current product information and specifications.

 **KEYSTONE**

# COUGAR

2026 FULL SIZE FIFTH WHEEL

## 355FBS



### SPECIFICATIONS:

Shipping Wt.	11,589
Carrying Cap.	2,311
Hitch Weight	1,900
Length	39'3"
Height	13'4"
Fresh Water	75 gal.
Gray Water	76 gal.
Black Water	76 gal.
Sleeps Up To	6

### KEY FLOORPLAN ADVANTAGES:

- Bath and a Half Floorplan under 40' in length
- Multi Functional Walk-in Closet
- Pivot Hinged Entertainment Center with Hidden Utility / Closet / Pantry
- Extra large Island with Pull-out Trash Drawer
- Washer Dryer Prepped
- 16 cu. ft. 12-volt Refrigerator with Glass Front
- 12-volt Ceiling Fan
- 26' of Total Awning Coverage: 16 ft. and 10 ft.
- Exterior and Interior Switch for Awning Operation
- Bed Slideout with Standard Queen or Optional King
- 18 Cabinet Doors & Drawers in Kitchen / Living Room
- 12 Windows throughout, all open
- Living Room 50" Smart LED TV
- 8 USB/USB-C Charging Ports throughout
- Pull-out Trash Drawer with Paper Towel Holder
- Available in (4) Full Body Paint Colors

### KEYSTONE EXCLUSIVE FEATURES:

- **Water Management Center with Shutoff Valves**
- HyperCore Composite Sidewalls
- Key TV: all "one-piece" Coax Runs
- Giggy Box: 12v Distribution Box
- Color Coded & Unified Wiring System
- Flush Mount Heat Ducts
- My Keystone App for owners
- Solar Flex Protect 220
- Transferrable 1-year Base Warranty
- Transferrable 3-year Structural Warranty

### ADDITIONAL STANDARD FEATURES:

(Bolded items are new for 2026)

- **High Gloss Fiberglass Exterior White Fog Color**
- **Airxcel Entry Steps with Composite Treads**
- **Bronze Bushings in Axle Hangers**
- **Power Watchdog™ Safeview Smart Power Inlet**
- **Curt Helux Shock-Absorbing Pin Box**
- **Solid Surface Bathroom Vanity Countertop**
- 33,000 BTU Cooling System
  - 18k Furrion Chill Cube main A/C
  - 15k Furrion bedroom A/C
- 3<sup>rd</sup> A/C Prep, wired to Maxx Fan location
- H-Rated 16ply Tires with 8-year Warranty
- ½" Thick Shackle Plates with Greaseable Wet Bolts
- Road Armor Suspension System
- ABS - Anti-Lock Braking System
- Key-Alike Lock System
- Power Fresh Water Tank Fill
- Oxygenics Shower Head
- Recessed Interior Lighting
- Dimmable Lighting Throughout
- Snap-in Ceiling Battens, Snap-in Crown Molding
- Tankless Water Heater
- Climate Guard - Tested & Approved from 0° to 110°
- 12 Volt Heat Pads on all Tanks
- Heat, Light & Massage in Theater Seats
- Winegard Air 360+ Antenna with Roof Satellite Prep
- Soft Close Cabinet Doors with Hidden Hinges
- 12-volt Refrigerator
- Roller Shades throughout
- 50-amp Service
- Auto-Leveling, **4-point** Lippert Ground Control

### AVAILABLE OPTIONS:

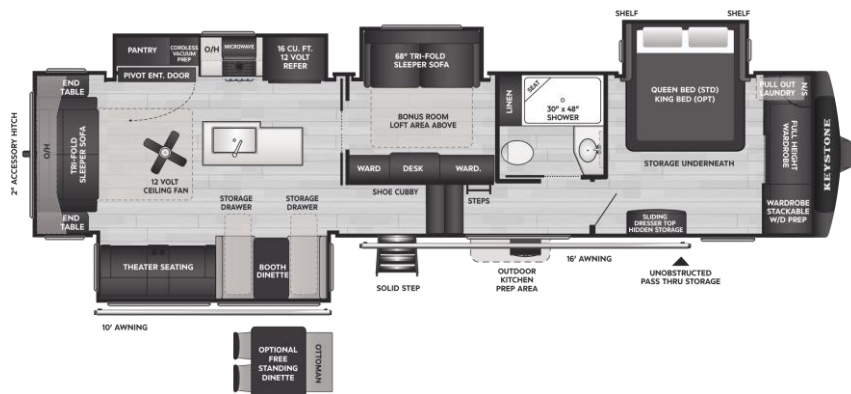
- Dual Pane Windows
- Slide Toppers
- King Bed
- Solar Flex Discover 440i
- Solar Flex Outlast 660i
- (2) 100-amp hour heated Lithium Batteries
- Full Body Paint

DISCLAIMER: Product information is as accurate as possible as of the date of this publication. All features, floor plans, and specifications are subject to change without notice. Pre-production estimated weights & lengths may be listed; visit [Keystonerv.com](http://Keystonerv.com) for the most current product information and specifications.

# COUGAR

2026 FULL SIZE FIFTH WHEEL

## 360MBI



### SPECIFICATIONS:

Shipping Wt.	12,385
Carrying Cap.	1,805
Hitch Weight	2,195
Length	39'3"
Height	13'4"
Fresh Water	75 gal.
Gray Water	76 gal.
Black Water	38 gal.
Sleeps Up To	10

### KEY FLOORPLAN ADVANTAGES:

- Under 40' overall Length
- "Flex Room": Office, Bedroom or Secondary Living Room with Decorative Barn Doors
- Pivot Hinged Entertainment Center with Hidden Utility / Closet / Pantry
- "Open-Feel" Loft for Additional Sleeping
- Shoe Storage Cabinet at Entrance
- Stackable Washer / Dryer Prepped
- 16 cu. ft. 12-volt Refrigerator with Glass Front
- 12-volt Ceiling Fan
- Outside Refrigerator with LPG Quick Connection
- 26' of Total Awning Coverage: 16 ft. and 10 ft.
- Converter Access with All Slides Retracted
- Exterior and Interior Switch for Awning Operation
- Available in (4) Full Body Paint Colors

### KEYSTONE EXCLUSIVE FEATURES:

- **Water Management Center with Shutoff Valves**
- HyperCore Composite Sidewalls
- Key TV: all "one-piece" Coax Runs
- Giggy Box: 12v Distribution Box
- Color Coded & Unified Wiring System
- Flush Mount Heat Ducts
- My Keystone App for owners
- Solar Flex Protect 220
- Transferrable 1-year Base Warranty
- Transferrable 3-year Structural Warranty

### ADDITIONAL STANDARD FEATURES:

(Bolded items are new for 2026)

- **High Gloss Fiberglass Exterior White Fog Color**
- **Airxcel Entry Steps with Composite Treads**
- **Bronze Bushings in Axle Hangers**
- **Power Watchdog™ Safeview Smart Power Inlet**
- **Curt Helux Shock-Absorbing Pin Box**
- **Solid Surface Bathroom Vanity Countertop**
- 33,000 BTU Cooling System
  - 18k Furrion Chill Cube main A/C
  - 15k Furrion bedroom A/C
- 3<sup>rd</sup> A/C Prep, wired to Maxx Fan location
- H-Rated 16ply Tires with 8-year Warranty
- ½" Thick Shackle Plates with Greaseable Wet Bolts
- Road Armor Suspension System
- ABS - Anti-Lock Braking System
- Key-Alike Lock System
- Power Fresh Water Tank Fill
- Oxygenics Shower Head
- Recessed Interior Lighting
- Dimmable Lighting Throughout
- Snap-in Ceiling Battens, Snap-in Crown Molding
- Tankless Water Heater
- Climate Guard - Tested & Approved from 0° to 110°
- 12 Volt Heat Pads on all Tanks
- Heat, Light & Massage in Theater Seats
- Winegard Air 360+ Antenna with Roof Satellite Prep
- Soft Close Cabinet Doors with Hidden Hinges
- 12-volt Refrigerator
- Roller Shades throughout
- 50-amp Service
- Auto-Leveling, **4-point** Lippert Ground Control

### AVAILABLE OPTIONS:

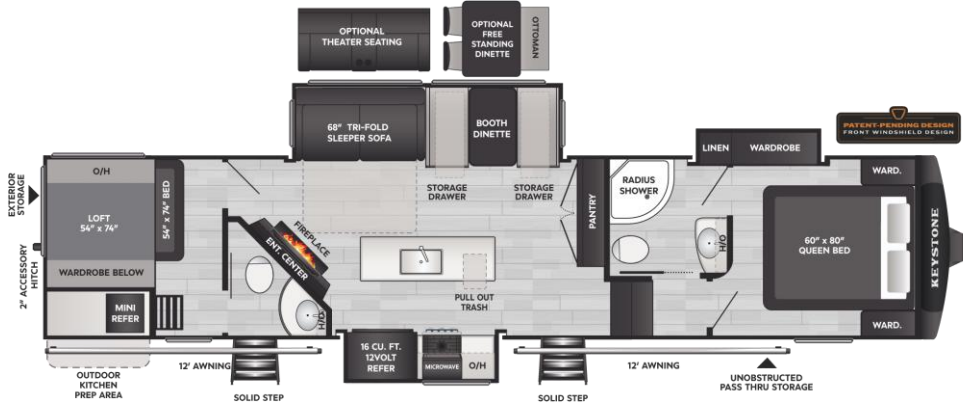
- Dual Pane Windows
- Slide Toppers
- King Bed
- Free Standing Dinette with Ottoman
- Solar Flex Discover 440i
- Solar Flex Outlast 660i
- (2) 100-amp hour heated Lithium Batteries
- Full Body Paint

DISCLAIMER: Product information is as accurate as possible as of the date of this publication. All features, floor plans, and specifications are subject to change without notice. Pre-production estimated weights & lengths may be listed; visit [Keystonerv.com](http://Keystonerv.com) for the most current product information and specifications.

# COUGAR

2026 FULL SIZE FIFTH WHEEL

## 364BHL



### SPECIFICATIONS:

Shipping Wt.	11,625
Carrying Cap.	2,375
Hitch Weight	2,380
Length	39'
Height	13'4"
Fresh Water	75 gal.
Gray Water	76 gal.
Black Water	76 gal.
Sleeps Up To	10

### KEY FLOORPLAN ADVANTAGES:

- **Two-bedroom model under 40' overall length**
- **One and Half Bathrooms**
- **Bedroom Wardrobe Slideout providing more Storage**
- **16 cu. ft. 12-volt Refrigerator with Glass Front**
- **Outside Kitchen with Refrigerator and Griddle**
- **Double Door Pantry**
- **Automotive Windshield providing Natural Light**
- **10 Windows throughout, all open**
- **24' of Total Awning Coverage: 12 ft. and 12 ft.**
- **Exterior and Interior Switch for Awning Operation**
- **Kitchen Pull-out Trash Drawer with Paper Towel Holder**
- **Convenient Dual Entry into Master Bathroom**
- **Oversized Exterior Storage under Rear Bed**
- **Available in (4) Full Body Paint Colors**

### KEYSTONE EXCLUSIVE FEATURES:

- **Water Management Center with Shutoff Valves**
- HyperCore Composite Sidewalls
- Key TV: all "one-piece" Coax Runs
- Giggy Box: 12v Distribution Box
- Color Coded & Unified Wiring System
- Flush Mount Heat Ducts
- My Keystone App for owners
- Solar Flex Protect 220
- Transferrable 1-year Base Warranty
- Transferrable 3-year Structural Warranty

### ADDITIONAL STANDARD FEATURES:

(Bolded items are new for 2026)

- **High Gloss Fiberglass Exterior White Fog Color**
- **Airxcel Entry Steps with Composite Treads**
- **Bronze Bushings in Axle Hangers**
- **Power Watchdog™ Safeview Smart Power Inlet**
- **Curt Helux Shock-Absorbing Pin Box**
- **Solid Surface Bathroom Vanity Countertop**
- 33,000 BTU Cooling System
  - 18k Furrion Chill Cube main A/C
  - 15k Furrion bedroom A/C
- 3<sup>rd</sup> A/C Prep, wired to Maxx Fan location
- H-Rated 16ply Tires with 8-year Warranty
- ½" Thick Shackle Plates with Greaseable Wet Bolts
- Road Armor Suspension System
- ABS - Anti-Lock Braking System
- Key-Alike Lock System
- Power Fresh Water Tank Fill
- Oxygenics Shower Head
- Recessed Interior Lighting
- Dimmable Lighting Throughout
- Snap-in Ceiling Battens, Snap-in Crown Molding
- Tankless Water Heater
- Climate Guard - Tested & Approved from 0° to 110°
- 12 Volt Heat Pads on all Tanks
- Heat, Light & Massage in Theater Seats
- Winegard Air 360+ Antenna with Roof Satellite Prep
- Soft Close Cabinet Doors with Hidden Hinges
- 12-volt Refrigerator
- Roller Shades throughout
- 50-amp Service
- Auto-Leveling, **4-point** Lippert Ground Control

### AVAILABLE OPTIONS:

- Dual Pane Windows
- Slide Toppers
- Free Standing Dinette with Ottoman
- Theater Seating in place of Trifold Sofa
- Solar Flex Discover 440i
- Solar Flex Outlast 660i
- (2) 100-amp hour heated Lithium Batteries
- Full Body Paint

DISCLAIMER: Product information is as accurate as possible as of the date of this publication. All features, floor plans, and specifications are subject to change without notice. Pre-production estimated weights & lengths may be listed; visit [Keystonerv.com](http://Keystonerv.com) for the most current product information and specifications.