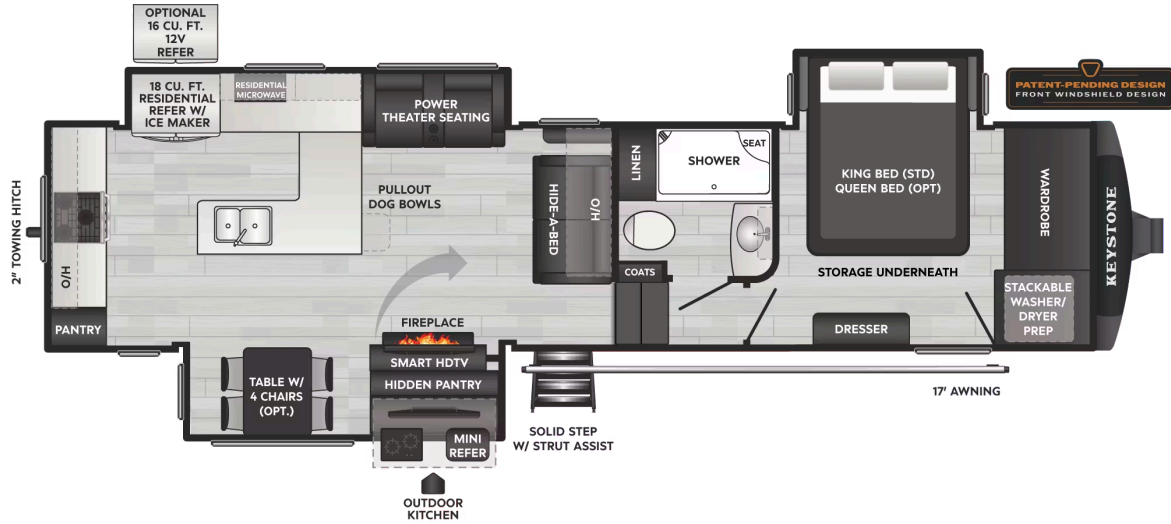


# MONTANA HIGH COUNTRY 325RK - LUXURY FIFTH WHEELS

Rear Kitchen, Outside Kitchen, Hidden Storage  
MSRP: TBD

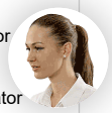


## SPECIFICATIONS

RV Type	Fifth Wheel
Shipping Weight	12,245 lb.
Carrying Capacity	3,740 lb.
Hitch	2,410 lb.
Length	36 ft 7 in
Height	13 ft 4 in
Tire-Size	ST235/80R16H
Fresh Water	75 gal
Gray Water	87 gal
Waste Water	48 gal
Sleeping Capacity	6
Number of Propane Tanks	2
LPG	60 lb.
Refrigerator Size	18 cu ft

## EXTERIOR

- S** 10" I-beam w/ z-frame technology
- S** MORryde® Rubber Pin Box
- S** 2" sidewall w/ dual layered lauan, high gloss fiberglass, double laminated and insulated rear wall
- S** 2" thick composite backed high gloss fiberglass sidewalls and insulated rear wall
- S** Tinted safety glass windows
- O** Dual pane frameless windows w/ safety tint
- S** MaxTurn™ front cap w/ KeyShield™ automotive-grade paint
- S** Fiberglass front cap w/ KeyShield™ automotive-grade paint
- S** Fully walkable roof w/ Alpha seamless TPO membrane system
- S** Electric slideouts throughout
- S** Insulated underbelly w/ forced hot air & electric tank heaters
- S** 7000 lb Dexter Gladiator® thick wall axles w/ upgraded springs & Nev-R-Adjust® brakes
- S** 7000 LB Curt Sipper Spring Axle Suspension
- S** MORryde® CRE3000 Suspension with wet bolts
- S** H-range Rainier ST235/80R16H tires
- S** Spare tire
- S** Ground Control® 4 point electric auto-leveling w/ hitch memory
- S** 6' 6" tall 30" wide entry door w/ friction hinge & screen assist handle
- S** MORryde® Step Above® entry steps w/ strut assist
- S** 6' 4" tall 30" wide entry door w/ friction hinge & screen assist handle
- S** Large pass through storage w/ oversized slam latch door
- S** Back-up camera prep
- S** 2nd battery disconnect dedicated to residential refrigerator (inverter models)
- S** Dual battery boxes



- Water connections, Water Manifold, black tank flush, outside shower, winterization valve, low point drains, power tank fill, waste & water handle valves, 110V outlet, shut-off valve, 12V compartment light, KeyTV™ satellite/cable hook-up
- Ⓢ Generator prep
- Ⓢ LP generator
- Water connections, black tank flush, outside shower, winterization valve, low point drains, power tank fill, waste & water handle valves, 110V outlet, shut-off valve, 12V compartment light, KeyTV™ satellite/cable hook-up
- Ⓢ Seamless roto-cast holding tanks
- Ⓢ Outdoor kitchen
- Ⓢ 50 Amp electrical service w/ detachable cord & 110v exterior outlet
- Ⓢ Outside shower w/ quick connect hose
- Ⓢ Lippert Solera series power awning w/ LED lights
- Ⓢ 2nd Lippert Solera series power awning w/ LED lights
- Ⓢ Slide-out awning package
- Ⓢ 3000 lb towing hitch
- Ⓢ 12V distribution Giddy Box™

## INTERIOR

- Ⓢ Roller shades throughout
- Ⓢ Decorative wood frame window casing
- Ⓢ Hardwood Urbane Bronze Cabinet doors and drawers with hidden hinges
- Ⓢ Beauflor® vinyl flooring throughout
- Ⓢ Thomas Payne Collection theater seating w/ electric recliners & tri-fold hide-a-bed sofa(s)
- Ⓢ Back-lit crown molding
- Ⓢ 5K BTU decorative fireplace heater
- Ⓢ Ozark Shadow cabinetry w/ shaker style doors & hidden hinges
- Ⓢ SBC V-Flow Max Cordless Vacuum
- Ⓢ Accent crown molding
- Ⓢ Central vacuum

## KEYSTONE EXCLUSIVES

- Ⓢ 3-year limited structural warranty
- Ⓢ 1-year limited base warranty
- Ⓢ Color-coded unified wiring standard
- Ⓢ 4G LTE and Wi-Fi prep
- Ⓢ Tuf-Lok™ thermoplastic duct joiners
- Ⓢ KeyTV™ multisource signal controller
- Ⓢ Tru-fit™ slide construction
- Ⓢ Blade Pure™

## KITCHEN FEATURES

- Ⓢ Hardwood trim on island, Tacoma Mocha accents & full extension ball bearing drawer glides
- Ⓢ Premium solid surface kitchen countertops
- Ⓢ Oversized deep stainless steel sink with attachments
- Ⓢ High-rise pull down faucet
- Ⓢ Hardwood trim on island, Woodland Maple accents & full extension ball bearing drawer glides
- Ⓢ Adjustable Sliding "Deskette" w/ 4 chairs
- Ⓢ Kitchen power vent fan w/ rain sensor
- Ⓢ Oversized stainless steel sink / removable solid surface sink covers
- Ⓢ Flush floor slideout(s)
- Ⓢ Free-standing dinette w/ four chairs

## APPLIANCES & UTILITIES

- Ⓢ (2) 30 lb LP tanks w/ auto changeover
- Ⓢ 35K BTU furnace
- Ⓢ 60K Suburban On Demand Water Heater
- Ⓢ 50" 4K Smart TV
- Ⓢ 15K BTU Coleman Mach Quiet Series ducted A/C w/ heat pump
- Ⓢ JBL Audio 2.1 Soundboard and wireless Subwoofer
- Ⓢ Starlink Prep
- Ⓢ On-demand water heater
- Ⓢ Furrion 18 Cu. Ft. 110V refrigerator & 2000w inverter
- Ⓢ 50" LED Smart TV
- Ⓢ 16 Cu. Ft. 12V refrigerator
- Ⓢ JBL Sound System
- Ⓢ Furrion 1.6 Cu. Ft. over-the-range microwave
- Ⓢ 24" Furrion Stove w/ Oven
- Ⓢ GE® Energy Star 18.6 Cu. Ft. refrigerator & 2000w inverter
- Ⓢ Pendant style island light w/ ceiling treatment
- Ⓢ GE® 1.6 Cu. Ft. over-the-range microwave
- Ⓢ 24" Furrion Stove w/ Matching stainless Steel Drawer



- Ⓢ Combo washer & dryer cabinet

## BEDROOM FEATURES

- ⓪ 60" x 80" full size queen bed
- Ⓢ King size bed
- Ⓢ Bed slide ceiling lights
- Ⓢ USB & 110V outlets bedside
- Ⓢ TV prep

## BATHROOM FEATURES

- Ⓢ Decorative seamless vanity w/ under-mount sink(s)
- Ⓢ Porcelain foot flush toilet
- ⓪ Bathroom vent fan w/ rain sensor
- Ⓢ Radius fiberglass shower w/ decorative glass enclosure, skylight, foot shelf

## WEATHER PROTECTION

- Ⓢ Four Season Living Package
- Ⓢ 12V heat pads on holding tanks
- Ⓢ Astrofoil insulated slide floors & underbelly
- Ⓢ Dual attic vents
- Ⓢ Heated and enclosed underbelly, convenience center, & dump valves
- Ⓢ Reflective foil insulated front cap
- Ⓢ Tested and approved for 0° usage

## SAFETY

- Ⓢ Breakaway switch
- Ⓢ GFI receptacles (select locations)
- Ⓢ CO detector
- Ⓢ Smoke detector
- Ⓢ Propane gas leak detector
- Ⓢ Fire extinguisher

