

Jayco | 2026 Jay Flight SLX Travel Trailer - Double Axle



JAY FLIGHT SLX

#1 SELLING TRAVEL TRAILER FOR OVER 15 YEARS



2+3
YEAR | YEAR
WARRANTY

JAY FLIGHT SLX TRAVEL TRAILER



DOUBLE AXLE

200MKS/MKSW



210QB/QBW



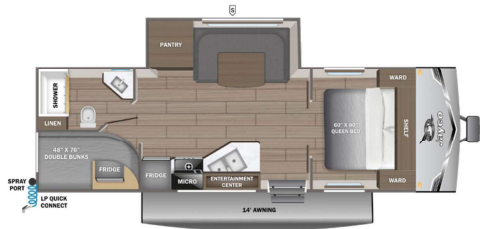
211MB/MBW



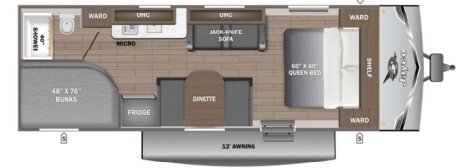
225MLS/MLSW



245BHS/BHSW



250BH/BHW **SPORT**



260BH/BHW



261BHS/BHSW



262RLS/RLSW



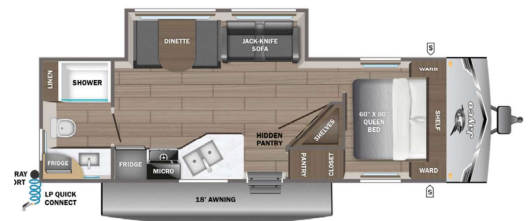
263BHS/BHSW



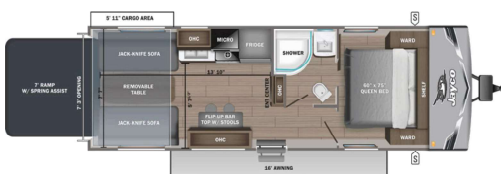
265BHS/BHSW



265MWS/MWSW



265TH



280FKS



284BHS/BHSW



JAY FLIGHT SLX TRAVEL TRAILER



S STORAGE
MICRO MICROWAVE
OHC OVERHEAD CABINETS
FRIDGE REFRIGERATOR
WARD WARDROBE

W WEST MODEL
SPORT SPORT MODEL



*Indicates split tanks

FLOORPLAN	TOTAL EXTERIOR LENGTH	EXTERIOR WIDTH	EXTERIOR HEIGHT (WITH A/C)	INTERIOR HEIGHT	UNLOADED VEHICLE WEIGHT	DRY HITCH WEIGHT	GVWR	CARGO CARRYING CAPACITY	FRESH WATER CAPACITY	GRAY WASTE WATER CAPACITY	BLACK WASTE WATER CAPACITY	SLEEPING CAPACITY
200MKS	24' 6"	8' 0"	11' 1"	6' 9"	4,890	560	6,500	1,610	52	39	39	1-2
210QB	25' 8"	8' 0"	10' 6"	6' 9"	4,260	460	6,000	1,740	52	39	32.5	4-6
211MB	24' 7"	8' 0"	10' 6"	6' 9"	4,225	505	6,000	1,775	52	39	39	4-6
225MLS	27' 1"	8' 0"	11' 1"	6' 6"	5,255	505	6,900	1,645	52	39	39	2-4
245BHS	28' 7"	8' 0"	11' 0"	6' 9"	5,460	635	7,000	1,540	52	39	39	7-9
250BH	27' 7"	8' 0"	10' 4"	6' 9"	4,285	425	6,000	1,715	52	39	39	6-8
260BH	29' 5"	8' 0"	10' 6"	6' 9"	4,745	540	6,500	1,755	52	39	39	8-10
261BHS	30' 4"	8' 0"	11' 1"	6' 9"	5,890	725	7,600	1,710	52	39	39	8-10
262RLS	31' 1"	8' 0"	11' 1"	6' 9"	6,160	780	7,900	1,740	52	39	39	4-6
263BHS	32' 7"	8' 0"	11' 1"	6' 9"	6,240	785	7,900	1,645	52	78*	39	7-9
265BHS	30' 10"	8' 0"	11' 1"	6' 9"	6,030	675	7,900	1,870	52	78*	39	8-10
265MWS	30' 0"	8' 0"	11' 0"	6' 9"	5,765	585	7,700	1,935	52	39	39	4-6
265TH	30' 4"	8' 0"	10' 9"	6' 9"	5,315	860	8,500	3,185	52	39	39	4-6
280FKS	33' 10"	8' 0"	11' 0"	6' 9"	7,465	720	9,500	2,035	52	117*	39	2-4
284BHS	33' 7"	8' 0"	11' 1"	6' 9"	6,140	830	8,200	2,060	52	39	39	7-9
287BHS	34' 4"	8' 0"	11' 1"	6' 9"	6,230	745	7,950	1,720	52	39	39	8-10
290RKS	36' 10"	8' 0"	11' 3"	6' 9"	7,810	1,080	9,650	1,840	52	110.5*	39	3-5
295TBS	36' 10"	8' 0"	11' 0"	6' 9"	7,048	805	9,200	2,152	52	39	39	6-8
321BDS	36' 4"	8' 0"	11' 1"	6' 9"	7,650	1,060	9,600	1,950	52	32.5	39	8-10
325BHT	38' 6"	8' 0"	11' 2"	6' 9"	8,465	1,110	10,600	2,135	52	78	39	9-11
330TBS	37' 7"	8' 0"	11' 3"	6' 9"	7,255	855	9,300	2,045	52	78	78	4-6
333BTS	37' 10"	8' 0"	11' 3"	6' 9"	8,355	1,200	10,500	2,145	52	71.5*	39	10-12
334RTS	37' 10"	8' 0"	11' 2"	6' 9"	8,735	1,160	10,600	1,865	52	71.5*	39	4-6
380DQS	40' 4"	8' 1"	11' 3"	6' 9"	8,485	1,035	10,500	2,015	52	78*	39	6-8
200MKS ^W	24' 7"	8' 0"	11' 2"	6' 6"	4,660	470	6,500	1,840	76	39	39	1-2
210QB ^W	25' 8"	8' 0"	10' 8"	6' 9"	4,210	460	6,000	1,790	84	40	32.5	4-6
211MB ^W	24' 6"	8' 0"	10' 5"	6' 9"	4,190	530	6,300	2,110	84	40	40	6-8
225MLS ^W	27' 1"	8' 0"	11' 0"	6' 9"	5,070	505	6,995	1,925	76	39	39	2-4
245BHS ^W	28' 7"	8' 0"	11' 0"	6' 9"	5,380	625	7,000	1,620	84	40	40	6-8
250BHW	TBD	8' 0"	TBD	6' 9"	TBD	TBD	TBD	TBD	TBD	TBD	TBD	6-8
260BHW	29' 5"	8' 0"	10' 4"	6' 9"	4,640	535	6,800	2,160	84	39	39	8-10
261BHS ^W	30' 4"	8' 0"	11' 1"	6' 9"	5,765	680	7,600	1,835	76	39	39	8-10
262RLS ^W	31' 1"	8' 0"	11' 3"	6' 9"	6,070	820	7,900	1,830	76	40	40	4-6
263BHS ^W	32' 7"	8' 0"	11' 1"	6' 9"	6,095	715	8,200	2,105	76	80*	40	8-10
265BHS ^W	30' 10"	8' 0"	11' 1"	6' 9"	5,830	690	7,900	1,070	76	78	39	8-10
265MWS ^W	29' 10"	8' 0"	11' 0"	6' 9"	5,620	630	7,700	2,080	76	40	40	4-6
284BHS ^W	34' 7"	8' 0"	11' 0"	6' 9"	6,100	815	8,200	2,100	76	39	39	8-10
286BHS ^W	33' 4"	8' 0"	11' 2"	6' 9"	6,235	830	8,500	2,265	76	78*	39	8-10
287BHS ^W	30' 4"	8' 0"	11' 0"	6' 9"	6,005	770	7,900	1,945	76	39	39	8-10

Some specs at the time of print may include estimates. For the most updated information, please visit Jayco.com

STANDARDS & OPTIONS

EXTERIOR

30-amp service
13.5K BTU roof A/C
Axles with electric, self-adjusting brakes and E-Z Lube® hubs
Exterior cable TV hookup
Fully integrated A-frame
Galvanized-steel, impact-resistant wheel wells
Large exterior downspouts
LP quick connect (outside grill prep)
[N/A on Sport Edition]
Magnum Truss™ Roof System
Nitrogen-filled radial tires
PVC roofing membrane (limited lifetime warranty)

INTERIOR

300 lb.-rated single bunk beds / 600 lb.-rated double bunk beds
Digital TV antenna
75 lb. full extension ball-bearing drawer guides
High-rise kitchen faucet
Marine-grade toilet with foot flush
Plywood bed platforms
Queen mattress
Residential-style hidden cabinet door hinges
Residential-style kitchen countertops
Shower curtain with curved shower track (select models)
Solid hardwood cabinet doors with screwed stile construction and hidden hinges
Vinyl flooring throughout

CUSTOMER VALUE PACKAGE (MANDATORY)

8 cu. ft. 12V refrigerator (*N/A on 380DQS)
Residential refrigerator – 380DQS only
AM/FM/Bluetooth® stereo
Backup camera prep
Bathroom skylight
Bathroom vent
Detachable power cord
Entry door with window and shade prep
Fitted bed sheet
G20 dark-tinted privacy windows
Keyed-Alike™ entry and baggage doors
Large folding entry door grab handle
LED interior and exterior lights

Microwave oven
On-demand tankless water heater
Power awning with LED lights
Rangehood
MORryde StepAbove® entry steps
Spare tire with cover
Stabilizer jacks
Tub/shower surround
Window shades

CUSTOMER VALUE PACKAGE - SPORT EDITION

12V refrigerator
19K BTU furnace
2-burner stovetop
Bathroom vent
Detachable power cord
Entry door with window and shade prep
G20 dark-tinted privacy windows
LED interior and exterior lights
Microwave oven
Stabilizer jacks
Window shades
Power awning
Front tongue jack
Rear bumper
20 lb. LP bottle
On-demand tankless water heater

ELITE PACKAGE (OPTIONAL ON SELECT MODELS)

Fiberglass sidewalls
Aluminum rims
Fireplace (N/A on 225MLS, 245BHS & 265BHS)
Window in slide room end wall
Enhanced graphics
Pull-out kitchen faucet
Dinette storage doors
Decorative window surrounds in living area
Front accent LED lighting

BAJA PACKAGE (OPTIONAL - IDAHO ONLY - SELECT DOUBLE AXLES)

(2) 30 lb. LP bottles
16 in. off-road tires
Increased ground clearance
Triple Tread™ step

OPTIONS

Options vary by model

15K BTU roof-mounted A/C
Bumper-mount outside griddle with LP quick-connect hose and mounting hardware
Baja Package (Idaho-built units only)
Fiberglass sidewalls
Aluminum rims (standard with Elite Package)
Tri-fold sofa
Theater seating sofa
Overlander I Solar Package: (1) 200W solar panel and 30-amp digital controller

Meet your Jayco Dealer



Scan QR code for specification definitions

Some specs at the time of print may include estimates. For the most updated information, please visit Jayco.com

Jayco, Inc. | P.O. Box 460 | Middlebury, IN 46540

See dealer for further information and prices. All information in this brochure and on www.jayco.com is the latest available at the time of publication approval. Jayco reserves the right to make changes and to discontinue models without notice or obligation. Photography may show optional equipment or props used for decoration purposes only. RVs built for sale in Canada may differ to conform to Canadian codes. JAYCO and the JAYCO BIRD IN FLIGHT are registered trademarks of Jayco, Inc. Printed in USA 10/25 ©2025 Jayco, Inc. 2033104



Jayco - Part of Jayco Family of Companies