

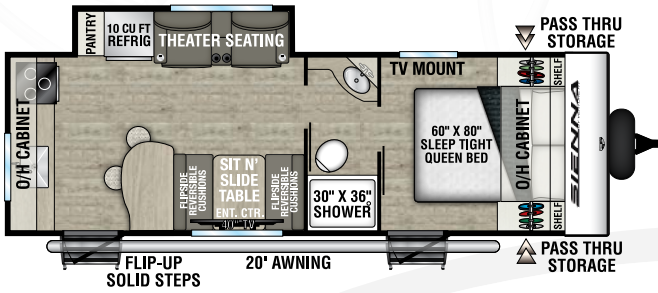
# SIENNA

2026



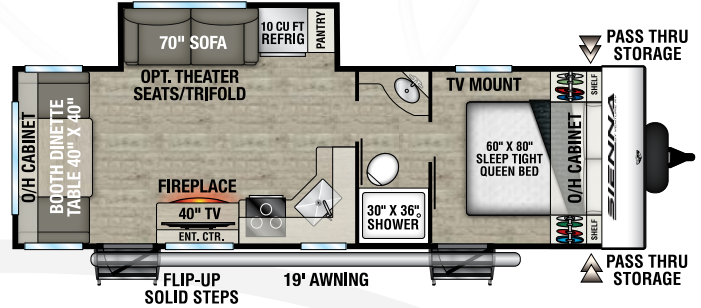
Travel Trailers

Designed for Campers by Campers!



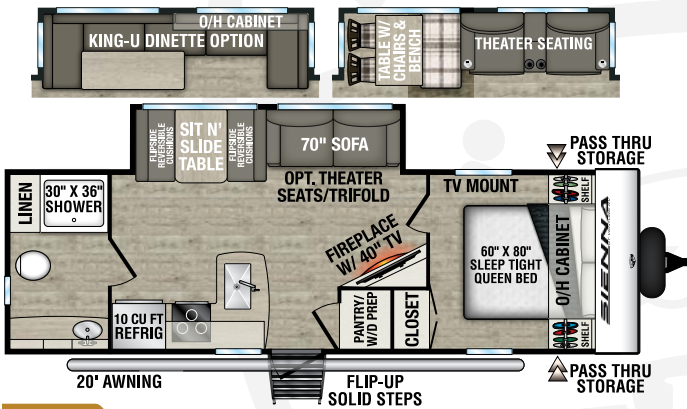
## SA231VRK

UVW - 5,670 lbs. | Exterior Length - 28' | Sleeps - 4



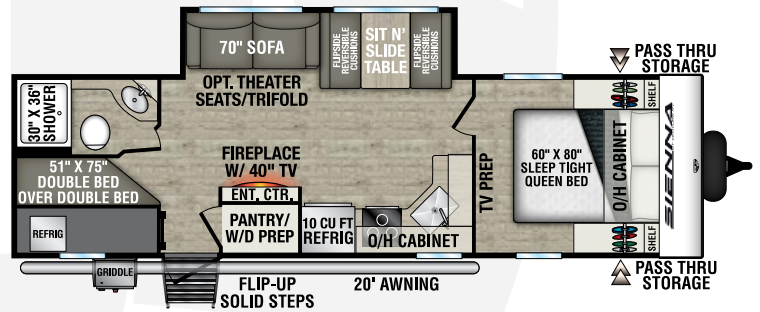
## NEW SA241VRD

UVW - 6,030 lbs. | Exterior Length - 30' | Sleeps - 4



## NEW SA251VRB

UVW - 6,190 lbs. | Exterior Length - 30' | Sleeps - 4

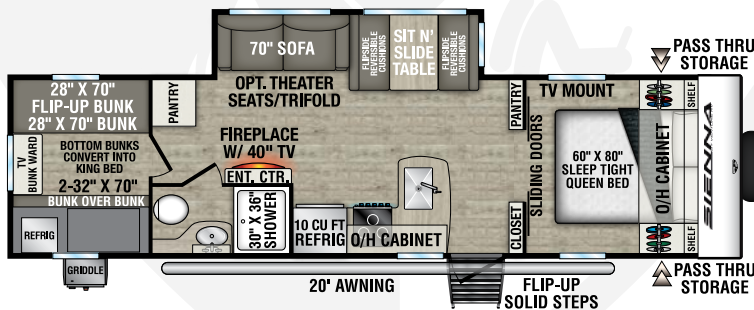


## SA271VBH

UVW - 6,550 lbs. | Exterior Length - 31' 10" | Sleeps - 10

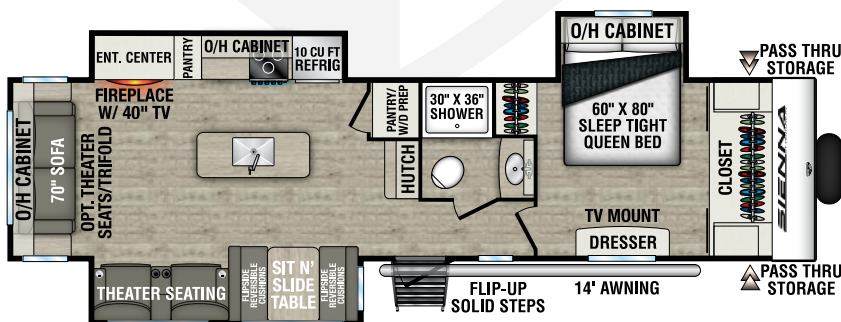
## SA281VQB

UVW - 6,990 lbs.  
Exterior Length - 33' 11"  
Sleeps - 12



## SA293VIK

UVW - 8,370 lbs.  
Exterior Length - 36' 11"  
Sleeps - 6



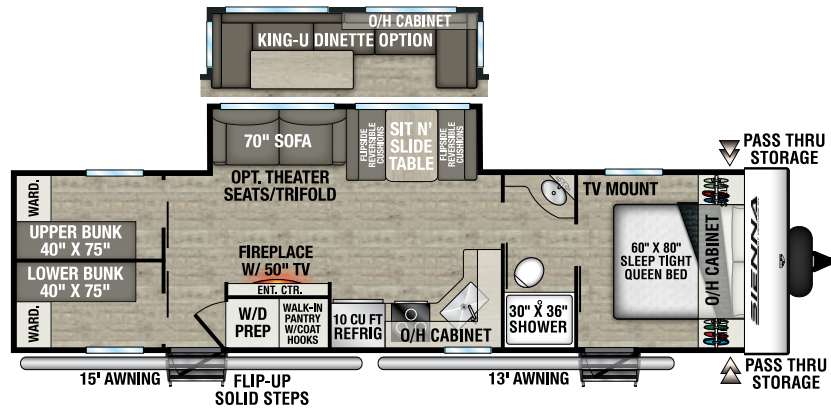
**NEW**

# SA311VDB

UVW - 7,470

Exterior Length - 36' 4"

Sleeps - 6



## EXTERIOR

- .030 Gloss Amour RV Siding 25% Thicker
- BAL 5.0 Power Stabilizer Jacks (Fall Pkg)
- BAL NXG Huck-Bolted Frame
- Heated and Enclosed One-piece Underbelly
- 50 Amp Service w/2nd A/C Prep (most models)
- Battery Disconnect Switch
- Max Size Power Awning
- Dexter Heavy Duty Axles
- Composite Flip-up Step w/Top Double Step
- Tuflex PVC Roofing w/Limited Lifetime Warranty
- Friction Hinge Door w/Screen Shot Screen Protector
- Tire Pressure Monitor Prep
- Roof Mounted Solar Prep
- Rear Camera Prep
- Steel Ladder
- BlueTooth Speaker
- Motion Lighting in Pass-Thru
- New Composite Exterior Step
- Level Mate Pro Bluetooth Leveling

## INTERIOR

- Modern Farm House Design
- Two Wood Colors (Surside White and Bladen Oak)
- Sit n' Slide Dinette Table
- Flipside Reversible Dinette Cushions
- Board & Batten Accent Walls

## FLUSH FLOOR SLIDE-OUTS

- 40" Smart TV w/Swing Arm
- 5,000 BTU Electric Fireplace
- Steel Trimmed Entry Door
- Beauflor Throughout, 0 Carpet
- Motion Lighting Entry Door Hallway
- Motion Lighting in Pantry
- 4 Way Dinette Table (241VRD)

## KITCHEN FEATURES

- Stainless Steel Undermount Farmers Sink
- High Rise Steel Faucet with Sprayer
- Large Pantry
- Spice Rack
- Sofia Custom Backsplash

## APPLIANCES & UTILITIES

- On-demand Tankless Water Heater
- InVision Appliance Suite
  - 10 cu ft 12v Refrigerator,
  - Modern Designed Range Hood
  - 18" 3 Burner Stove Top w/Oven
  - InVision Microwave
- 30K BTU Furnace
- Washer/Dryer Prep (VBF)
- Central Command Center
- Power Pro Mini Bluetooth Connectivity
- Coleman 15K A/C
- 2-20#LP Tanks

## BEDROOM FEATURES

- Bedroom Dresser (VBF)
- Max Size Closets

## STOR-MOR Night Shelves

- 60" X 80" Residential Queen Mattress
- Reversible Heirloom Comforter
- Large Under The Bed Storage
- Brookshire Shiplap Accent Wall

## BATHROOM FEATURES

- Motion Activated Lighting
- SkyLight Above Shower
- Stainless Steel Sink
- Steel Faucet
- Power Vent
- Porcelain Foot Flush Toilet
- Medicine Cabinet w/Storage

## SAFETY

- Fire Extinguisher
- Break Away Switch
- Carbon Monoxide Detector
- Smoke Detector
- LP Leak Detector
- GFI Receptacles

## OPTION

- 2nd A/C
- Off-the-Grid Solar Panel w/30A Controller
- Free Standing Table w/2-Benches and 2-Chairs
- King-U Sofa IPO Jiffy and Dinette
- Theater Seat IPO Jiffy
- Trifold Sofa IPO Jiffy
- 15K A/C (VBF)
- 50 amp w/2nd A/C Prep (VBF)



**Tuflex™ PVC Roofing**  
w/LIFETIME WARRANTY!  
dicor products

**NXG FRAME**  
The Next Generation in RV Frame Technology



985 N 900 W | Shipshewana, IN 46565 | [www.venture-rv.com](http://www.venture-rv.com)

Due to continual research and advances, manufacturer reserves the right to change specifications, design, price and equipment without notice, and assumes no responsibility for any error in this literature.

Some items shown are not included as standard or optional equipment.

©2025 Venture RV, a division of K. Z., Inc. All Rights Reserved | 9/9/25 | 5M

Dealer: