

Pursuit
BY COACHMEN

Pursuit
BY COACHMEN

DRIVE.
BE AMAZED.
REPEAT.



 **Coachmen**
Leader to the Great Outdoors.



Exterior Color Selections



Vinyl Graphics



Partial Paint with Vinyl Graphics



Full-Body Paint - Westwind

New exterior graphics, including a redesigned partial paint design and one full-body paint design to make you stand out on the road.



HOME IS WHERE THE HEART GOES.

Your home is wherever your journey takes you when you travel in the Pursuit. With an 18,000-lb. chassis, thicker walls, and better insulation, the Pursuit is built to last, both inside and out. Featuring an open floorplan that creates a social area with a residential feel, the Pursuit doesn't compromise on luxury. After choosing it, you'll have a spacious vehicle with more comfort and more standard features. The only thing you won't have? Regrets.

More options come standard than ever in the Pursuit, including side view cameras for easy navigation, power-heated mirrors that fight the frost, and much more:

- The 18,000 GVWR chassis is equipped with a HD front track bar, enhancing drivability and safety.
- The 2-inch Azdel sidewall is 50% lighter than wood and impervious to water, keeping the Pursuit lightweight without compromising strength.
- A KING Jack TV antenna means better and clearer reception from almost anywhere.
- A super-supportive Tread Lite Power Step makes it easy to board and exit in comfort.
- The outdoor kitchen includes a refrigerator, sink, portable gas grill, grill stand, and propane hookup (30FW only).
- A rear-fill gas tank eliminates the problem of pulling up to the wrong side of the pump.
- Enjoy your favorite music wherever you go, thanks to Bluetooth radio.



GREAT OUTDOORS, MEET THE GREAT INDOORS.

With the Pursuit's new 30FW full wall slide floor plan, you'll have plenty of space to stretch and enjoy life on the road. Designed for residential living, the Pursuit is the perfect place to socialize, cook dinner, or just kick back and enjoy the view.

The low-maintenance interior features one-piece, stain-resistant TREKK flooring that runs throughout the entire coach. When you're ready for sleep, the Pursuit's new bedroom will delight with its layered cabinets, residential headboard and wainscoting, and 32-inch television. Whether you're driving or relaxing, comfort and sophistication are always along for the ride.

*Pursuit 30FW with Copper Penny décor and Spiced Maple cabinets shown in all photos.

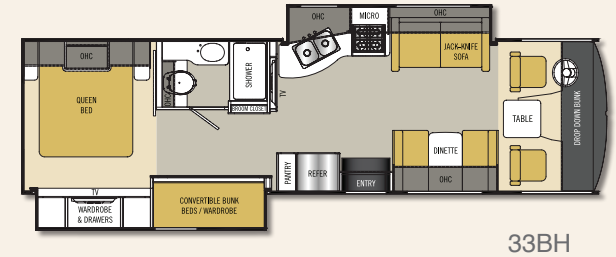
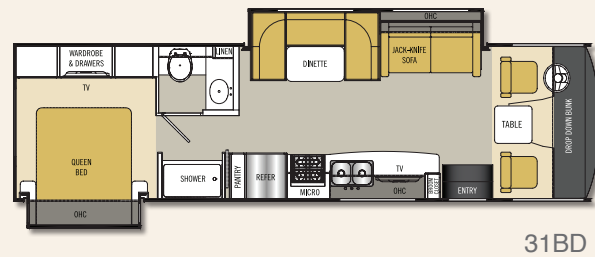
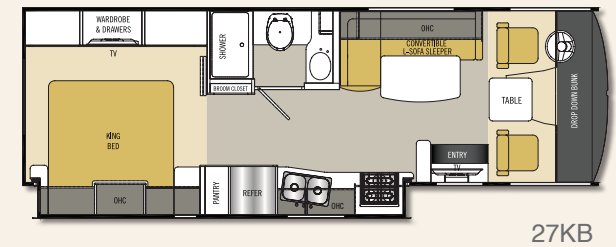
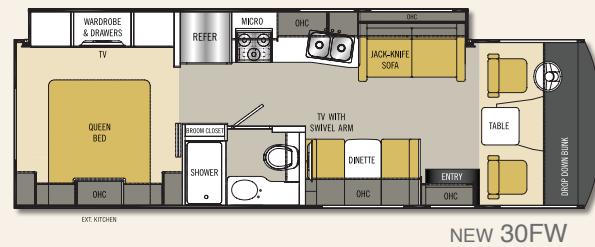
With more standard options, the Pursuit offers more bang for your buck and even better comfort:

- The gorgeous backsplash is both easy on the eyes and easy to clean.
- The pleated day/night shades, located throughout the interior, offer a sophisticated look and plenty of privacy.
- The durable stainless steel double sink with a high-rise telescoping faucet makes clean-up a breeze.
- Durable diamond-plate black rubber flooring in the driver's area makes for easy upkeep.
- The high-rise porcelain toilet comes standard for enhanced comfort.



**Luxury now comes standard.
And that's not all:**

- Long-lasting, energy-efficient LED lighting illuminates the Pursuit with a cozy glow.
- The power drop-down bunk, a double bed, can easily support up to 300 pounds.
- Storage is plentiful, including hidden and secure storage behind the TV.
- The standard cabinetry adds to the luxurious feel of the interior, and offers ample storage space.



STANDARD FEATURES

INTERIOR APPOINTMENTS

Power Drop-Down Front Bunk
Ball Bearing Drawer Glides Throughout
Bismark Fawn Wall Board – Coach
Glo Pecan Wall Board – Accent
Thermofoil Countertops Throughout
Moab Trekk Linoleum
Antique Nickel Hardware
Hardwood Cab Doors/Flat Panel
Radius Slider Windows w/Safety Glass
Reclining/Swivel Pilot Seats
Soft Touch Jackknife Sofa
Pleated Day/Night Shades Throughout
L-Lounge Dinette (27KB)
Standard Booth Dinette (33BH & 30FW)
Horseshoe Booth (31BD)
Round Cockpit Pedestal Table

INTERIOR EQUIPMENT

Radio AM/FM/Bluetooth
Satellite Prep Wire to Roof
Exterior Cable TV Jack
LP Leak Alarm and Smoke Detector
Carbon Monoxide Detector
Fire Extinguisher
KING Jack TV Antenna
32" LCD TV Coach & Bedroom
DVD Player in Living room
Message Center (White Board and Cork)
Broom Closet
Mud Room at Stepwell
Pantry
Pull-Out Pantry with Counter Top

GALLEY

Range Hood w/Light
Flush Mount, Double-Door Refrigerator
High-Rise Kitchen Faucet
Stainless Steel Double-Bowl Kitchen Sink
3-Burner Range
Microwave Oven
Thermofoil Backsplash

BATH AND WATER

Porcelain Toilet w/Foot Flush
One Piece ABS Shower Surround
Upgrade Shower Curtain
Power Bath Vent
6-Gallon Gas D.S.I. Water Heater
Demand Water Pump
Skylight Over Shower

SLEEPING

Queen Bed 60"X 74" (N/A 27KB)
King Bed 70" X 75" (27KB)
Deluxe Innerspring Mattress – 312 Coil
Designer Headboard
Day/Night Shade in Bedroom

ELECTRICAL/HEATING/AC

30' – 30-Amp Power Cord
55-Amp Converter w/Distribution Panel
GFI Circuit
Outside Recept
Emergency Start Switch
Patio Light
30,000 BTU E.I. Furnace
15,000 BTU Roof Air Conditioner – Ducted
Double Coach Battery

4.0 Onan Generator
Coach Command Center
Heated Holding Tank Compartment
LED Interior Lights

AUTOMOTIVE/EXTERIOR

18,000-lbs. Ford Chassis
Passenger Side Safety Window
Mega Rear Storage (N/A 33BH & 27KB)
Tilt Steering Wheel
Cruise Control
Intermittent Wipers
Dash Air Conditioning
Cab Privacy Shades
Back Up Monitor w/Side Cameras
Radial Tires
Rear Mud Flaps Only
Power Entrance Step – Single
Crowned, Laminated TPO Roof
Radius Trunk Doors
Fiberglass Front Cap
Dead Bolt Lock – Entrance Door
26" Radius Entry Door
Power Patio Awning
5,000-lbs. Towing Hitch w/7-Way Plug
Rear-Mounted Roof Ladder
Power Heated Mirrors
Rear Bumper
Stainless Steel Wheel Liners
Slide-Out Room Awning(s), Where Applicable
20-Gallon LP Tank
Valve Stem Extenders
Exterior Kitchen (30FW Only)

OPTIONAL FEATURES

50 Amp Package, Includes:

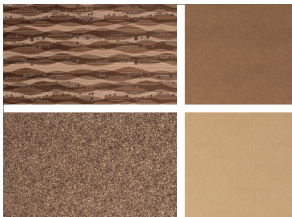
- 50 Amp Power Cord
- 5.5 KW Onan Generator
- Two 13,500 BTU Air Conditioners

15,000 BTU A/C w/Heat Pump Front
15,000 BTU A/C w/Heat Pump Rear
Frameless Tinted Windows w/Safety Glass
Outside Entertainment Center w/32" TV & DVD
Fantastic Vent in Bedroom
(N/A w/50 Amp Option)
Automatic Leveling Jacks
Diamond Shield – (Required with Full Paint)
CSA Upfit
⁽¹⁾ CD-MVSA (Canadian Motor Vehicle Safety Act)
Travel Easy Roadside Assistance (Coach-Net)

Notes:

⁽¹⁾ Mandatory for All Canadian Provinces

Interior Decor Color Selections



Mocha Spice



Pepper Mill



Copper Penny

Interior Wood Color Selections



Spiced Maple



Honey Glazed Maple



FREE One-Year Membership – Coachmen Owners Association!

Coachmen is proud to sponsor the largest manufacturer-sponsored camping club in North America ... Coachmen Owners Association (COA). COA provides you a world of ways to enjoy your RV. This is **FUN ON OVERDRIVE** and provides: Free Trip Routing, Exciting Tours & Rallies, Free Campground Directory, Local/State Club Activities, Easy RVing Magazine Free, Theme

Park Discounts, Fuel Discounts, Free onebigplanet® Memberships with discounts at 180,000 merchants, and Much More!

Every new Coachmen RV buyer is eligible for a 1-Year FREE membership in the Coachmen Owners' Association. It all adds up to an easy ownership experience!

SPECIFICATIONS

CLASS A GAS	27KB	30FW	31BD	33BH
2016 FORD ENGINE V-10 6.8L 3-Valve*	320 HP/460 TRQ	320 HP/460 TRQ	320 HP/460 TRQ	320 HP/460 TRQ
WHEELBASE	178"	190"	208"	208"
GVWR	18,000 lbs	18,000 lbs	18,000 lbs	18,000 lbs
GCWR	23,000 lbs	23,000 lbs	23,000 lbs	23,000 lbs
FUEL CAPACITY	80 gal	80 gal	80 gal	80 gal
LP GAS CAPACITY (gallons)	20 gal	20 gal	20 gal	20 gal
FURNACE (BTUs)	30,000	30,000	30,000	30,000
EXTERIOR LENGTH (w/o ladder)	29'	30' 3"	32' 6"	33'
EXTERIOR HEIGHT (with AC)	12"	12"	12"	12"
EXTERIOR WIDTH	102"	102"	102"	102"
FRESH WATER	45 gal	50 gal	50 gal	50 gal
GREY WATER	40 gal	35 gal	40 gal	40 gal
BLACK WATER	28 gal	35 gal	28 gal	28 gal
WATER HEATER	6 gal	6 gal	6 gal	6 gal
AWNING SIZE	22'	20'	18'	12'

*2015 FORD ENGINE V-10 6.8L 3-Valve 362 HP/457 TRQ

GVWR (Gross Vehicle Weight Rating): The maximum permissible weight of the unit, including the unloaded vehicle weight (UVW) plus all fluids, cargo, optional equipment, and accessories. For safety and product performance, do not exceed the GVWR.

GCWR (Gross Combined Weight Rating): The maximum total weight of the loaded unit, plus a tow vehicle. This includes the weight of both the unit and tow vehicle, fuel for each, all other fluids, cargo, occupants, optional equipment, and accessories.

Important Note: All capacities are approximate, and all dimensions are nominal. Coachmen motorhomes are designed to allow for a wide variety of uses, extended trips with two people, or short trips with multiple people. Accordingly, each unit allows ample room for sleeping, seating, fluids, and cargo. While the customer is the beneficiary of this design, the customer also bears the responsibility to select the proper combination of passengers, cargo, load, and tow vehicle without exceeding the chassis weight capabilities. Consumer may need additional braking capacity to tow loads greater than 1,000 pounds.

Seat belts should always be worn for passenger safety. Seat belts are provided at most locations to allow convenience in selecting which

seat to occupy. However, it is not intended that all seating positions equipped with a seat belt may be occupied while the vehicle is in motion, without regard to other weight factors.

All Coachmen motorhomes are designed to ensure that the number of passengers allowed while the vehicle is in motion will always at least equal the stated sleeping capacity. Though extra seat belts may be provided, for your safety and the proper operation of your vehicle, limit your passengers to the number allowed by the Net Carrying Capacity of your vehicle.

All information contained in this brochure is believed to be accurate at the time of publication. However, during the model year, it may be necessary to make revisions and Coachmen reserves the right to make all such changes without notice, including prices, colors, materials, equipment, and specifications as well as the addition of new models and the discontinuance of models shown in this brochure. Therefore, please consult with your Coachmen dealer and confirm the existence of any materials, design, or specifications that are material to your purchase decision.

© Copyright 2016 Coachmen RV, a Division of Forest River, Inc. – All Rights Reserved



Forest River, Inc. encourages our customers to purchase their Forest River products from a local dealership whenever possible because of the following reasons:

1. Forest River, Inc. dealers are independently owned and operated businesses, so priority service and scheduling is at their discretion and is often provided to customers that purchased their unit at that dealership.
2. Purchasing locally allows customers to establish meaningful relationships with a dealer, enhancing the RV experience through assistance with product questions, user tips or RV regulations for your state or country, and much more!
3. Canadian customers must meet requirements to bring an RV purchased out of the country to their home. These requirements may involve additional inspections and certifications, taxes, and fees. Your local Canadian dealer is a professional at meeting these requirements.
4. Scheduling timely warranty repairs and adjustments through a local dealership provides far greater flexibility and convenience to you, the customer!

It is the goal of Forest River, Inc. that all of our RV owners fully enjoy the RV experience and that customer satisfaction meets or exceeds their expectations!



Travel Easy™ Roadside Assistance!

RVing is easier with Coachmen's Travel Easy™ Roadside Assistance provided FREE the first year of ownership to those who purchase a New Coachmen RV. Administered by Coach-Net, this service provides you with 24/7 operational, technical and emergency road service coverage. Also included is towing, fuel delivery, jump starts, lockout service, tire changes, mobile mechanic, and unlimited technical assistance. Anywhere. Anytime. Travel Easy™ is the security of knowing that help is an easy phone call away.



Coachmen RV, a Division of Forest River, Inc.,
A Berkshire Hathaway Company
423 N. Main St., P.O. Box 30, Middlebury, IN 46540

To learn more about Coachmen RV and our products and see how Coachmen is making the easy life easier, visit www.coachmenrv.com.



Learn More
Scan this barcode using a QR Reader on your smart phone to learn more about Forest River.



A Berkshire Hathaway company.