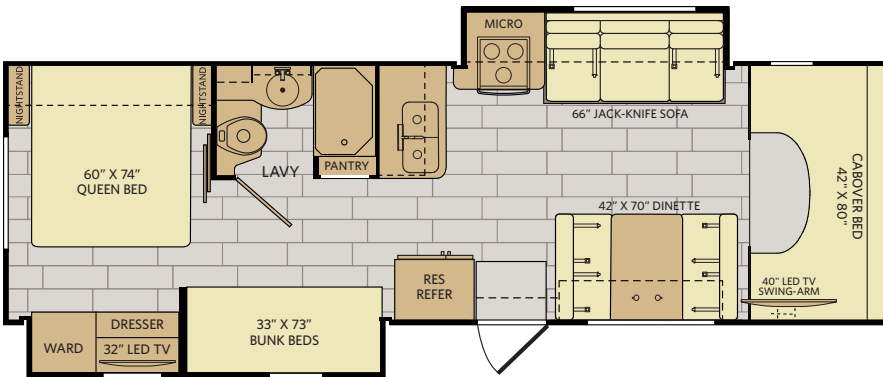


VIP EXECUTIVE PACKAGE (STANDARD)

- Integrated Roof Mounted Awning
- Side Swing Aluminum Luggage Doors
- Exterior Wall Mounted Entertainment Center
- Color Monitor w/Side & Rear Vision Cameras
- 11 cu. ft. Two-Door Stainless Steel Residential Refrigerator
- Stainless Steel Microwave Convection Oven
- Solid Surface Counter Tops
- Dynamic Ride Suspension
- Automatic Hydraulic Leveling Jacks
- High Gloss Cabinetry
- Glass Shower Door
- Heated Pass Through Basement Storage
- 15,000 BTU A/C w/Heat Pump
- Burl Wood Dash Accents
- Flush Mount Glass Cooktop Cover
- 40" Living Area TV
- 1200 Watt Pure Sine Inverter
- Solar Panel Connection Port
- Rear Ladder
- Lighted Entry Grab Bar
- 6 Gallon Gas/Electric DSI Water Heater
- Auto Gen Start

30D Options: 113, 146, 157, 351, 860/864



Available Options

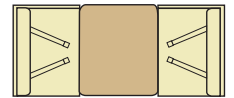


OPT. 113
3-BURNER
COOKTOP
W/OVEN



OPT. 146
2-DOOR REFRIG
W/ICEMAKER

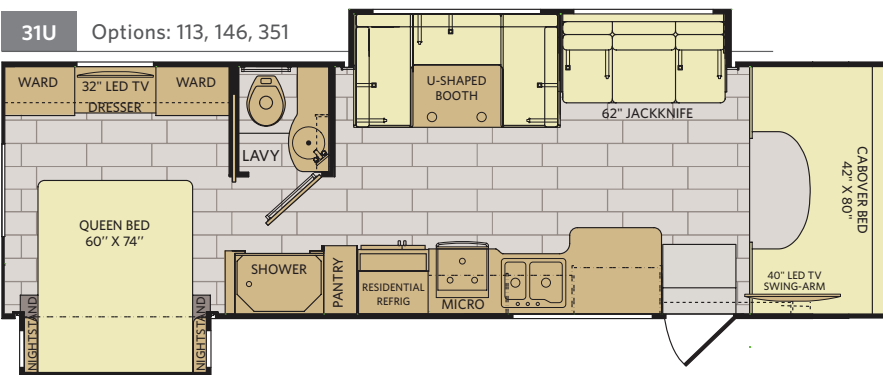
OPT. 157
Dual Flat
Panel Monitors
Bunk Area



OPT. 860/864
DINETTE W/ SWING DOWN BUNK
30" X 70" DINETTE / 28" X 70" BUNK

OPT. 351
40" LED TV
W/HOME
THEATER SYSTEM

31U Options: 113, 146, 351



DÉCOR CHOICES

High Gloss
Autumn Wheat



High Gloss
Nottingham Cherry



1 | Sofa 2 | Accent 3 | Bedspread 4 | Countertop 5 | Flooring 6 | Carpet

Infinity Sterling



Rum Raisin



EXTERIOR CHOICES

Natural Graphite



Ocean Ridge



CHASSIS

MODEL	30D	31U
Wheelbase	214"	214"
GVWR (lbs) ¹	14,500	14,500
Front GAWR (lbs) ²	5,000	5,000
Rear GAWR (lbs) ²	9,600	9,600
GCWR (lbs) ³	22,000	22,000
Hitch Rating Weight (lbs) [†]	7,500	7,500
Tongue Weight (lbs) ⁴	500	500
Fuel Capacity (gal)	55	55

FORD® CHASSIS

Model: Ford
Engine: 6.8L Triton V10
Transmission: Ford 6-Speed, Automatic w/Overdrive

Alternator: 155 Amp
Torque: 420 lb.-ft. @ 3250 RPM
Horsepower: 305 HP

DIMENSIONS AND CAPACITIES

MODEL	30D	31U
Overall Length ⁴	31' 8.5"	32' 5.5"
Overall Height (suspension inflated) ^{5,6}	12'	12'
Overall Width (suspension inflated) ^{5,6}	102"	102"
Interior Height (maximum)	82"	82"
Interior Width (maximum)	96"	96"
Patio Awning Width	16' 4"	16' 4"
Interior Storage (cu. ft.)	110	115
Exterior Storage (cu. ft.)	104	90
Fresh Water Holding Tank (gal)	60	49
Grey Water Holding Tank (gal)	37	35
Black Water Holding Tank (gal)	37	35
Appliance Propane Tank (gal) (WC) ⁷	14	14
Water Heater Tank (gal)	6	6

Addendums

- GVWR (Gross Vehicle Weight Rating) is the maximum permissible weight of this fully loaded motorhome. The GVWR is equal to or greater than the sum of the (UVW) unloaded vehicle weight plus the (OCCC) occupant cargo-carrying capacity*.
- GAWR (Gross Axle Weight Rating) is the maximum permissible loaded weight a specific axle is designed to carry.
- GCWR (Gross Combined Weight Rating) is the value specified by the motorhome manufacturer as the maximum allowable loaded weight of this motorhome with its towed vehicle. Towing and braking capacities may be different. Refer to Fleetwood and chassis manufacturer's manuals for complete information.
- Length measured from front bumper to rear bumper (excludes accessories).
- Excludes safety equipment and awnings.
- Motorhomes feature a body width over 96" which will restrict your access to certain roads. Before purchasing, you should research any state and/or province road laws which may affect your usage.
- Tank manufacturer's listed water capacity (WC). Actual propane capacity is 80% of water listing as required by the safety code.

† The chassis manufacturer recommends the installation of a supplemental brake control system to activate the brakes on the vehicle or trailer you are towing. Hitch receiver ratings expressed are maximum for the hitch receiver installed and may require the purchase of additional equipment that is dependent on the weight of the towed load. Consult with hitch receiver manufacturer for further information.

* UVW and OCCC are found on the label containing the federal certification tag in each RV.

†† The Minimum Towable Load of this vehicle is the available weight capacity, up to GCWR, when the coach is fully loaded to maximum GVWR. However, if the coach is loaded to something less than maximum GVWR, that extra available weight capacity can be added to your Towable Load. For example, if your coach is loaded to 1000lbs less than maximum GVWR, your Towable Load increases accordingly. Do not exceed the hitch rating weight, GVWR or GCWR.

IMPORTANT—PLEASE READ

Product information, photography and illustrations included in this publication were as accurate as possible at the time of printing. For further product information and changes, please visit our website at www.fleetwoodrv.com or contact your local Fleetwood RV dealer. Prices, materials, design and specifications are subject to change without notice. All weights, fuel, liquid capacities and dimensions are approximate. Fleetwood RV has designed its recreational vehicles to provide a variety of uses for customers. Each vehicle features optimal seating, sleeping, storage and fluid capacities. The user is responsible for selecting the proper combination of loads (i.e., occupants, equipment, fluids, cargo, etc.) to ensure that the vehicle's capacities are not exceeded.

CONTACT US

To locate a dealer near you, visit our website at www.fleetwoodrv.com or call 1-800-322-8216. We can also be contacted at Fleetwood RV Customer Relations, P.O. Box 1007, Decatur, IN 46733.

** All 2017 REV Recreation Group motorhomes include a limited one-year/15,000-mile coach warranty and three-year/45,000-mile structural warranty, whichever occurs first, and is fully transferable for the first 12 months.