

FREELANDER



FREELANDER

CLASS C MOTORHOMES



FREE TO ROAM THE OPEN ROAD.

FREELANDER INTERIOR FEATURES



At Coachmen, we pride ourselves in providing you with an RV that offers the most standard feature content on the market, allowing you to fully immerse yourself into any adventure!

LED lighting throughout

Congoleum® Designer
Carefree flooring

Deep single bowl and double bowl
sinks with Hi rise faucet

High quality furniture and fabrics

Large 57" x 95" overhead bunk

LCD TV and DVD player

Back-up monitor

Seating areas convert into
sleeping areas

Large windows

Sturdy pedestal table

Plenty of seating with safety belts

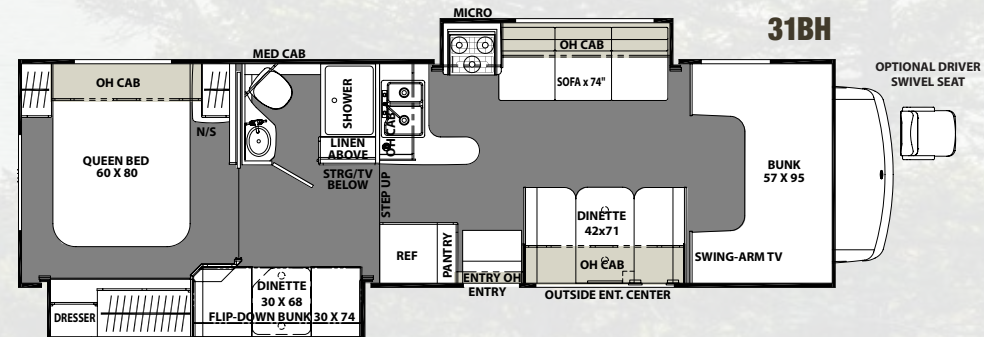
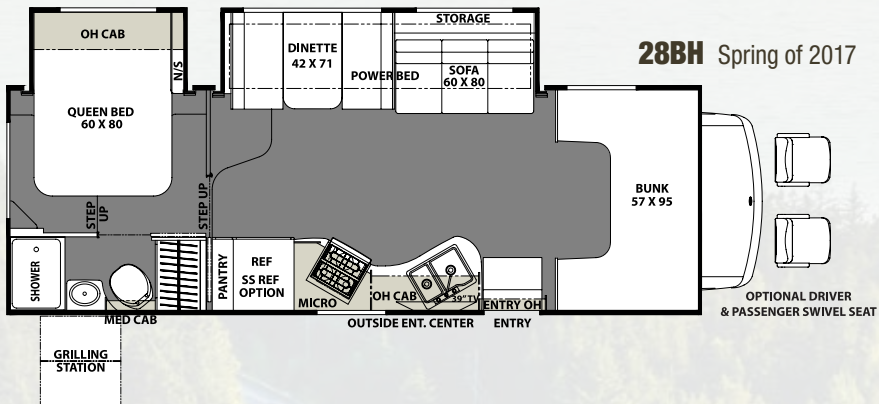
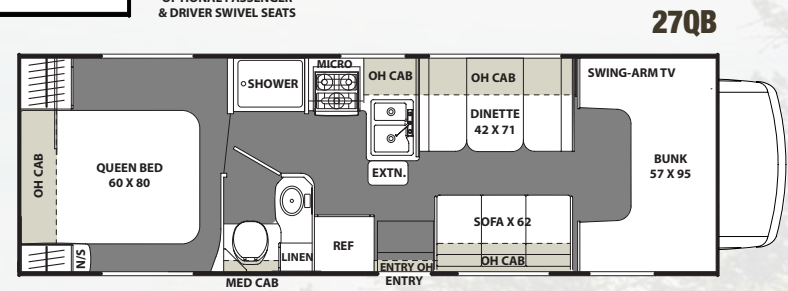
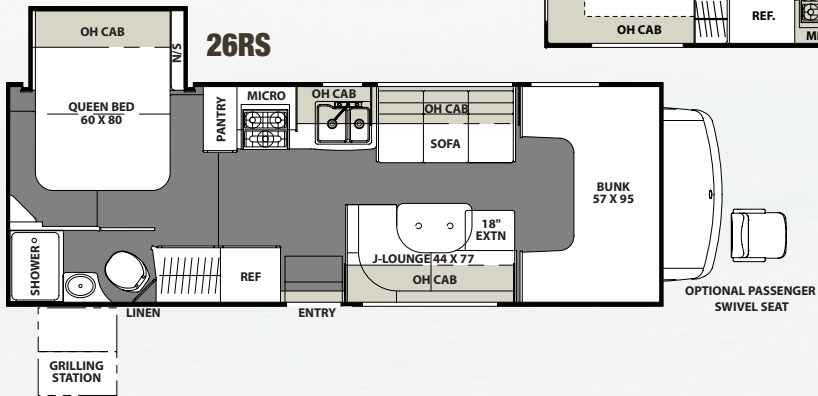
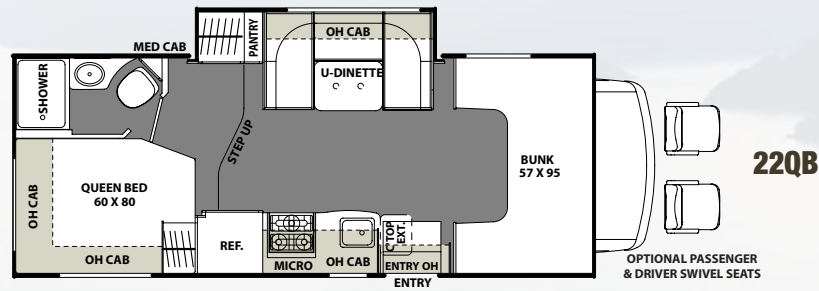
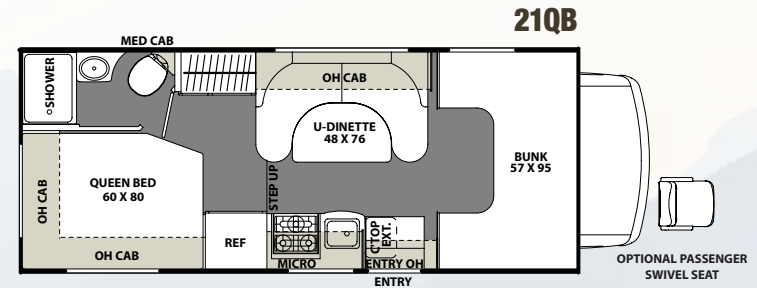
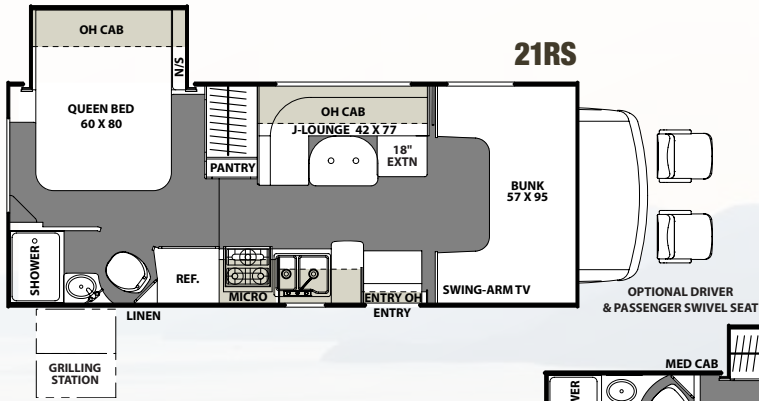
Thermofoil dinette and countertops

Single child safety tether at forward
facing dinette (N/A 21QB)



26RS shown with Stone Mist décor

A Diverse and Innovative Floorplan Lineup ensures that we have the coach that will meet your needs and fit your lifestyle.



FREELANDER STANDARD AND OPTIONAL FEATURES

STANDARD

WARRANTY

- Motorhome – 12 Month/ 12,000 Mile Limited Warranty
- Chassis Warranty – See Chassis Owners Manual
- Travel Easy Roadside Assistance – 1 Year

AUTOMOTIVE/EXTERIOR/CONSTRUCTION

- 55-Gallon Fuel Tank (Ford)
- 57-Gallon Fuel Tank (Chevy)
- Driver & Passenger Air Bags
- Deluxe Chassis Package
- Cruise Control
- Tilt Steering Wheel
- Dash Air Conditioning
- Power Windows & Locks
- Black Exterior Upgrade Mirrors
- 5,000 lb. Towing Hitch w/7-Way Plug (Chevy)
- 7,500 lb. Towing Hitch w/7-Way Plug (E450 Ford only)
- Laminated Steel 2" Floor
- Laminated Aluminum 2" Sidewalls
- Crowned Laminated TPO Roof
- Steel Entry Step Box
- Ivory Exterior Moldings
- Ivory Thumb Lock Trunk Doors
- Ivory 80" Radius Entrance Door w/Window & Deadbolt
- Ivory Lamilux 4000 Sidewalls, Rear Wall
- Ivory Lamilux 1000 Wing Walls, Cab Over Floor, Slide Out Floor
- Metal Running Boards
- New Freelander Graphics
- Roto Mold Rear Trunk Box / Plasti-Cote Metal Side Boxes
- Rear Steel Tube Bumper
- Stainless Steel Wheel Liners
- Exterior Safety Grab handle
- Black Slide Out Awnings
- Black Power Awning w/Weather Shield
- Aluminum Body Side Moldings
- Smooth Exterior Range Vent
- Black Rear Ladder
- Exterior LED Marker Lights & Tail Lights
- Aluminum Bunk Floor
- Entry Door ABS Cover
- Fiberglass Front Wrap (Ivory)

INTERIOR APPOINTMENTS

- Pewter – Serenity Ash
- Thermo Foil Wood Accent Color – Etched Medallion
- Twain Mineral – Sidewalls
- Twain Mineral – Front Cab Over Wall
- Twain Nutmeg – Slide Outs & Rear wall
- Black Hardware (3-3/4" Spread)
- 5/8" Verde Labrador Thermo Foil Countertops
- CC236 Pathways Pacific Crest Trail – Rolled Flooring
- 135 SE Right of Way – Carpet
- Matador Frost – Hardboard Ceiling Panels
- Roller Bearing Drawer Guides Throughout
- Poplar Drawer Sides (ex. Behind Doors are Techwood)
- Night Shades & Lambrequins
- Tinted Radius Slider Windows – Safety Glass
- ODS Cab Over Side Window (N/A 27QB)
- Factory Reclining Pilot & Passenger Seats
- Booth Dinette (27QB, 31BH)
- J-Dinette w/Pullout (21RS/26RS)
- U-Dinette (22QB)
- "Banana" U-shaped Dinette (21QB)
- Single Child Tether at Forward Facing Dinette (N/A 21QB)
- Jackknife Sofa (N/A 21QB, 22QB)
- Hardwood FPI Doors & Drawers
- Glass Insert Doors in Select Areas (Trees)
- Shaker House Type Bath Door
- New Freelander Facerboard
- Black Receipts/Rotaires/Switches
- Small Interior Safety Grab Handle at Entrance Door
- Vinyl Padded Cab Over Mattress Restraints
- Vinyl Padded Headnocker
- Magazine Rack Above Entrance Door

INTERIOR EQUIPMENT

- Jack Wing TV Antenna
- LP Leak Alarm
- Smoke Detector
- Carbon Monoxide Detector
- Fire Extinguisher
- ASA Touch Screen Radio & Backup Monitor w/Dash Speakers
- RVS Color Backup Camera
- Bedroom LCD TV Backer & Connections
- Pre-Wired for Satellite Dish through Coax Input

GALLEY

- Residential Size Microwave Oven – Furriion Black
- Dometic Flush Mount, Double Door Refrigerator
- Paneling Refrigerator Insert
- Combined Monitor Panel
- Stainless Steel Single Bowl Kitchen Sink (21QB, 22QB)
- Parchment Composite Double Bowl Kitchen Sink (N/A 21QB, 22QB)
- Power, Lighted Range Hood – Black
- Black Atwood 3-Burner Cooktop w/16" Oven
- FL Standard Satin Nickel Kitchen Faucet
- Black Sure Fit Dinette Table Posts (21QB, 27QB, 31BH)
- Springfield HD Silver Table Base (21RS, 22QB, 26RS)
- Freelander Dinette Styling
- Kitchen Flip Up Countertop Extension (21QB, 22QB, 27QB)
- Kitchen Tile Wall Border

BATH AND WATER

- City Water Pressure Fill Ports
- Power Bath Vent
- Demand Water Pump
- Composite Parchment Lavatory Sink
- Parchment Lavatory Faucet w/Round Knobs
- Parchment Shower Faucet & Shower Head
- Lavatory Mirror
- Satin Nickel Shower Door – Glass
- Black Towel Ring / TP Holder / Robe Hooks
- Parchment ABS Molded Shower & Surround
- Composite Foot Flush Toilet – Parchment
- 6-Gallon Gas Electronic Ignition Water Heater
- Skylight Over Shower

SLEEPING

- Bunk Bed – 32" x 74" (31BH) (Fabric Covered)
- Bunk Bed/Small Dinette Slideout (31BH)
- Queen Bed – 60" x 80" w/Ticking
- Fold Over Bed – 60" x 80" w/Ticking (21RS/26RS)
- Standard Bedspread
- Cab Over Bunk – 57" x 95" (Fabric Covered)
- Privacy Drape – Lower Cab
- Child Safety Ladder w/Bunk Velcro Restraints
- Window at Head of Bed

ELECTRICAL/HEATING/AC

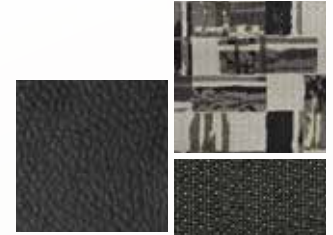
- 30 Amp Power Cord
- 55 Amp Electronic Converter
- Auxiliary Battery
- Manual Generator Changeover
- 4.0KW Onan Gas Generator
- GFI Circuit
- Black Manual Auxiliary Battery Disconnect
- Awning LED Strip Light
- Wall Mounted Thermostat
- 30,000 BTU Ducted Furnace (N/A 21QB, 21RS, 22QB)
- 20,000 BTU Ducted Furnace (21QB, 21RS, 22QB)
- 13,500 BTU Non-Ducted Roof A/C (21QB)
- 13,500 BTU Ducted Roof A/C (N/A 21QB)
- Recept & Coax Connection by Awning Leg (if possible)
- New LED Lights Throughout
- Exterior TV Ready Box
- Exterior Solar Plug-in Connection (by Entry Door)
- Bed Area 110V CPAP Ready Area & 12V/USB Charging Station

OPTIONAL

STAND ALONE OPTIONS

- 32" Coach TV and DVD
- 32" Coach TV/DVD & Bunk Area 24" 110v TV/Stereo w/DVD/Speakers (31BH)
- Exterior 24" TV/Stereo/HDMI Game Port/ Speakers
- Exterior Camp Kitchen Table (21RS, 26RS)
- Upgrade Serta Mattress (21RS, 26RS is Williamsburg)
- Driver Swivel Seat (Ford or Chevy) (N/A 21QB, 26RS, 27QB)
- Passenger Swivel Seat (Ford or Chevy) (N/A 27QB, 31BH)
- Exterior Windshield Cover
- Cockpit Folding Table (for Ford Rotating Seats)
- 15,000 BTU Low Pro AC w/Heat Pump (N/A 21QB)
- **Camping Cozy Package**
Dual Pane Tinted Windows, Heated Tank Pads, At Tank Gate Valve
- Spare Tire
- Air Assist (Mandatory 31BH, N/A 21QB)
- Z240 RV Compliance (Ford Only)
- Canadian Compliance (Speedo/Lights) (Ford Only)
- CD-MVSA (Ford Only)
- Child Safety Net
- Heated Tanks
- Cab Over & Bedroom Power Vent Fan w/Maxxair® Cover
- Salon Bunk (28BH only)

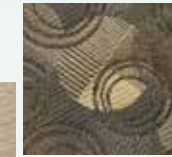
DÉCOR



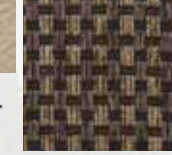
CARBON



BRONZITE



STONE MIST



SERENITY ASH

Standards and Options subject to change without notice.

FREELANDER EXTERIOR FEATURES



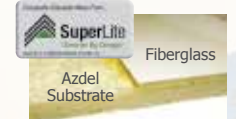
Slide room awnings (where applicable) to protect your slide room from debris.



Coachmen's Even Cool™ air conditioning system is ducted through the crowned, vacuum-bonded roof. The system uses AMOCO insulated ductwork with radiused corners to provide maximum cooling efficiency. (most models)



TPO roof membrane – lightweight, durable and easy to maintain.



Azdel SuperLite™ sidewall substrate – lightweight, durable and moisture resistant.

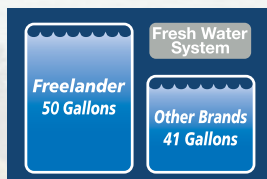
2" thick aluminum cage constructed, color-infused, hi-gloss fiberglass sidewalls. (standard)



Warehouse exterior storage (most models)

Exterior camp table (optional on 21RS, 26RS) w/table, sink and refrigerator (29KS only)

Exterior Entertainment Center w/LCD TV/Stereo/DVD and Speakers. (optional)



50 gallons of fresh water – on average 20% more than the competition. (most models)



Solar panel plug-in connection. Solar-ready Connection (standard)



Integrated entry step with 80" entry door and auxiliary battery box.



Standard ONAN 4.0kw gas generator gives you 110v power when shoreline power is not available.



Frelander's one-touch power awning features adjustable arms for ease of use and LED Strip Lighting. (Lead Dog Package)



Dash stereo with touch screen control and integrated back-up monitor. (Lead Dog Package)

FREELANDER MICRO INTERIOR FEATURES



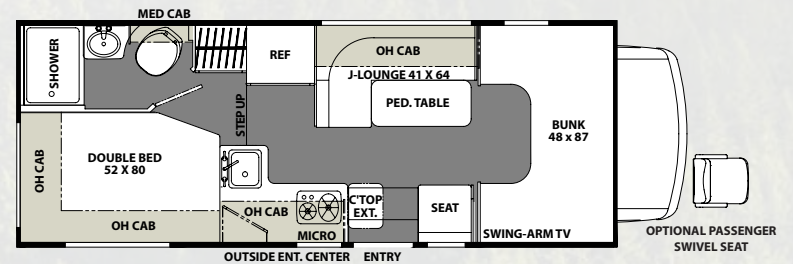
The Freelandler Micro packs big features into it's smaller size.

- Residential microwave
- Gas range top with power range hood
- 13,500 BTU roof air conditioner
- J-Dinette
- Serta mattress (*optional*)
- Passenger swivel seat (*optional*)



20CB Micro shown with Stone Mist décor

20CB Micro



STANDARD

WARRANTY

- Motorhome – 12 Month/ 12,000 Mile Limited Warranty
- Chassis Warranty – See Chassis Owners Manual
- Travel Easy Roadside Assistance – 1 Year

AUTOMOTIVE/EXTERIOR/CONSTRUCTION

- 25-Gallon Fuel Tank
- Driver & Passenger Air Bags
- Deluxe Chassis Package
- Cruise Control
- Tilt Steering Wheel
- Dash Air Conditioning
- Power Windows & Locks
- OEM Exterior Mirrors
- 2,000 lb. Towing Hitch w/4-Way Plug
- Laminated Aluminum 2" Floor
- Laminated Aluminum 2" Sidewalls
- Crowned Laminated TPO Roof
- Steel Entry Step Box
- Ivory Exterior Moldings
- Ivory Thumb Lock Trunk Doors
- Ivory 80" Radius Entrance Door w/Window & Deadbolt
- Ivory Lamilux 4000 Sidewalls, Rear Wall
- Ivory Lamilux 1000 Wing Walls, Cab Over Floor, Slide Out Floor
- New Freelander Graphics
- Roto Mold Rear Trunk Box / Plasti-Cote Metal Side Boxes
- Rear Steel Tube Bumper
- Stainless Steel Wheel Liners
- Exterior Safety Grab handle
- Black Slide Out Awnings
- Black Power Awning w/Weather Shield
- Aluminum Body Side Moldings
- Smooth Exterior Range Vent
- Black Rear Ladder
- Exterior LED Lights
- Aluminum Bunk Floor
- All Aluminum Walls

INTERIOR APPOINTMENTS

- ILW Pewter – Serenity Ash
- Thermo Foil Wood Accent Color – Lampost
- ILW Twain Mineral – Sidewalls
- ILW Twain Mineral – Front Cab Over Wall
- ILW Twain Nutmeg – Slide Outs & Rear Wall
- Black Hardware (3-3/4" Spread)
- Granite Chocolate HPL Countertops Throughout
- Morgane 590 – Rolled Flooring
- 135 SE Right of Way - Carpet
- Matador Frost – Hardboard Ceiling Panels
- Roller Bearing Drawer Guides Throughout
- Poplar Drawer Sides (ex. Behind Doors are Techwood)
- Night Shades & Lambrequins
- Tinted Radius Slider Windows – Safety Glass
- ODS Cab Over Side Window
- Factory Reclining Pilot & Passenger Seats
- J-Dinette
- Single Child Tether at Forward Facing Dinette
- ILW Slab Doors & Drawers
- ILW Hollow Core House Type Bath Door
- Freelander Facerboard (if applicable)
- Black Receipts/Rotaires/Switches
- Small Interior Safety Grab Handle at Entrance Door
- Vinyl Padded Up & Angle Pads
- Vinyl Padded Headnocker
- Magazine Rack above Entrance Door

INTERIOR EQUIPMENT

- Jack Wing TV Antenna
- LP Leak Alarm
- Smoke Detector
- Carbon Monoxide Detector
- Fire Extinguisher
- Factory Dash Radio AM/FM / CD
- RVS Backup Monitor on Rear View Mirror w/RVS Rear Camera
- Bedroom LCD TV Backer & Connections
- Pre-Wired for Satellite Dish Through Coax Input

GALLEY

- Residential Size Microwave Oven – Furrion Black
- Dometic Flush Mount, Double Door Refrigerator
- Paneling Refrigerator Insert
- Combined Monitor Panel
- Composite Undermount Single Bowl Sink
- Power, Lighted Range Hood – Black
- Black Atwood 2-Burner Cooktop
- FL Standard Satin Nickel Kitchen Faucet
- Black Sure Fit Dinette Table Posts
- Freelander Dinette Styling
- Kitchen Flip-up Countertop Extension
- Freelander Tile Wall Border

BATH AND WATER

- City Water Pressure Fill Ports
- Power Bath Vent
- Demand Water Pump
- Composite Parchment Lavatory Sink
- Parchment Lavatory Faucet w/Round Knobs
- Parchment Shower Faucet & Shower Head
- Lavatory Mirror
- Plastic Curved Shower Door
- Black Towel Ring/TP Holder/Robe Hooks
- Parchment ABS Molded Shower & Surround
- Composite Foot Flush Toilet – Parchment
- 6-Gallon Gas Electronic Ignition Water Heater
- Trunk Door at Termination

SLEEPING

- Corner Bed – 52" x 80" w/Ticking
- Standard Bedspread
- Cab Over Bunk – 48" x 87" (Fabric Covered)
- Privacy Drape – Lower Cab
- Child Safety Ladder w/Bunk Velcro Restraints
- Headboard

ELECTRICAL/HEATING/AC

- 30 Amp Power Cord
- 55 Amp Electronic Converter
- Auxiliary Battery
- Manual Generator Changeover
- 4.0KW Onan Gas Generator
- GFI Circuit
- Black Manual Auxiliary Battery Disconnect
- Awning LED Strip Light
- Wall Mounted Thermostat
- 18,000 BTU Ducted Furnace
- 13,500 BTU Non-Ducted Roof A/C
- Recept & Coax Connection by Awning Leg (if possible)
- LED Lights Throughout
- Exterior TV Ready Box
- Exterior Solar Plug-in Connection (by Entry Door)
- Bed Area 110V CPAP Ready Area & 12V/USB Charging Station

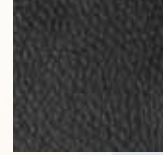
OPTIONAL

STAND ALONE OPTIONS

- 24" Coach TV & DVD
- Ext 24" TV/Stereo/HDMI Game Port/Speakers
- Upgrade Serta Mattress
- Rotating Passenger Seat (Not Available Yet)
- Exterior Windshield Cover
- Cockpit Folding Table (Not Available Yet)
- 15,000 BTU Low Profile A/C w/Heat Pump
- **Camping Cozy Package** ONLY Tank Pads, At Tank Gate Valve (NOT DP Windows)
- Aluminum Rims (Not Available Yet)
- Firestone Ride Rite Bags (Not Available Yet)
- Z240 RV Compliance
- Canadian Compliance (Speedo/Lights)
- CD-MVSA
- Child Safety Net
- Heated Tanks
- Cab Over & Bedroom Power Vent Fan w/Maxxair® Cover

Standards and Options subject to change without notice.

DÉCOR



CARBON



BRONZITE



STONE MIST



SERENITY ASH

FREELANDER SPECIFICATIONS



Free One Year Membership –
Coachmen Owners' Association

Coachmen is proud to sponsor the largest manufacturer sponsored camping club in North America ... Coachmen Owners' Association (COA). COA provides a broad breadth of value propositions for our owners including: planned trips/ tours and rallies at bulk rate discounts, free trip routing, free campground directory, free Easy RVing magazine, theme park discounts, fuel discounts, mail forwarding, a dedicated COA web site, local and state club activities and Caravan Chapter membership opportunities. Most importantly, COA enhances the Coachmen ownership and RV lifestyle experience.

Every new Coachmen RV buyer is eligible for a 1 Year FREE membership in the Coachmen Owners' Association. It all adds up to an easy ownership experience!



Travel Easy™
Roadside Assistance

RVing is easier with Coachmen's Travel Easy™ Roadside Assistance provided FREE the first year of ownership to those who purchase a New Coachmen RV. Administered by Coach-Net, this service provides you with 24/7 operational, technical and emergency road service coverage. Also included is towing, fuel delivery, jump starts, lockout service, tire changes, mobile mechanic and unlimited technical assistance. Anywhere. Anytime. Travel Easy™ is the security of knowing that help is an easy phone call away.

MODEL	20CB	21QB	21RS	22QB	26RS	27QB	28BH	31BH
CHASSIS	FORD T350 TRANSIT	4500-CHEVY / E350-FORD	4500-CHEVY / E350-FORD	4500-CHEVY / E350-FORD	4500-CHEVY / E350-FORD	4500-CHEVY / E350-FORD	4500-CHEVY / 450-FORD	4500-CHEVY / 450-FORD
ENGINE	V6-3.7L	V8-6.0L / V10-6.8L	V8-6.0L / V10-6.8L	V8-6.0L / V10-6.8L	V8-6.0L / V10-6.8L	V8-6.0L / V10-6.8L	V8-6.0L / V10-6.8L	V8-6.0L / V10-6.8L
HORSE POWER	275	324 / 305	324 / 305	324 / 305	324 / 305	324 / 305	324 / 305	324 / 305
TORQUE	260	373 / 420	373 / 420	373 / 420	373 / 420	373 / 420	373 / 420	373 / 420
WHEEL BASE	156"	159" / 158"	159" / 158"	169" / 168"	191" / 190"	191" / 190"	199" / 198"	224" / 223"
GVWR* (LBS.)	10,360	14,200 / 12,500	14,200 / 12,500	14,200 / 12,500	14,200 / 12,500	14,200 / 12,500	14,200 / 14,500	14,200 / 14,500
GCWR* (LBS.)	12,125	20,000 / 18,500	20,000 / 18,500	20,000 / 18,500	20,000 / 18,500	20,000 / 18,500	20,000 / 22,000	20,000 / 22,000
UVW* (APPROX. LBS.)	8,140	9,478 / 9,498	10,168 / 10,156	10,138 / 10,208	10,888 / 10,788	10,660 / 10,340	12,400 / 12,300	12,400 / 12,728
CCC (APPROX. LBS.)	2,220	4,722 / 3,002	4,032 / 2,344	4,062 / 2,292	3,312 / 1,712	3,540 / 2,160	1,800 / 2,920	1,800 / 1,772
GAWR FRONT (LBS.)	4,130	4,600 / 4,600	4,600 / 4,600	4,600 / 4,600	4,600 / 4,600	4,600 / 4,600	4,600 / 5,000	4,600 / 5,000
GAWR REAR (LBS.)	7,275	9,600 / 8,500	9,600 / 8,500	9,600 / 8,500	9,600 / 8,500	9,600 / 8,500	9,600 / 9,600	9,600 / 9,600
INTERIOR HEIGHT	6' 9"	6' 11"	6' 11"	6' 11"	6' 11"	6' 11"	6' 11"	6' 11"
EXTERIOR WIDTH	7' 10"	8' 6"	8' 6"	8' 6"	8' 6"	8' 6"	8' 6"	8' 6"
EXTERIOR HEIGHT (W/ A/C)	10' 4"	10' 11"	10' 11"	10' 11"	10' 11"	10' 11"	10' 11"	10' 11"
EXTERIOR LENGTH (W/ HITCH)	23' 7"	24' 5" / 23' 11"	24' 9" / 24' 3"	25' 4" / 24' 10"	27' 11" / 27' 5"	30' 0" / 29' 6"	28' 11" / 28' 5"	33' 5" / 32' 11"
HITCH WEIGHT (LBS.)	2,000	5,000	5,000	5,000	5,000	5,000	5,000 / 7,500	5,000 / 7,500
FUEL CAPACITY (GAL.)	25	57 / 55	57 / 55	57 / 55	57 / 55	57 / 55	57 / 55	57 / 55
LP CAPACITY (LBS.)	40	68	68	68	68	40	68	68
FRESH WATER CAPACITY (GAL.)	38	50	50	50	50	40	43	50
WATER HEATER CAPACITY (GAL.)	6	6	6	6	6	6	6	6
GREY TANK CAPACITY (GAL.)	28	25	28	28	31	31	31	34
BLACK TANK CAPACITY (GAL.)	26	22	31	22	31	31	31	29
EXTERIOR STORAGE (CU. FT.)	60	92	67	92	60	77	83	77
AWNING LENGTH (FT.)	14'	15'	15'	16'	18'	20'	19'	11'

GVWR (Gross Vehicle Weight Rating) is the maximum permissible weight of the unit when fully loaded. It includes all weights, inclusive of all fluids, occupants, cargo, optional equipment and accessories. For safety and product performance do NOT exceed the GVWR.

GCWR (Gross Combined Weight Rating) is the maximum permissible loaded weight of your motor home and any towed trailer or towed vehicle. Actual GCWR of this vehicle may be limited by the sum of the GVWR and the installed hitch receiver maximum capacity rating; see hitch rating label for detail.

GAWR (Gross Axle Weight Rating) is the maximum permissible weight, including cargo, fluids, optional equipment and accessories that can be safely supported by each axle.

UVW (Unloaded Vehicle Weight) * is the typical weight of the unit as manufactured at the factory. It includes all weight at the unit's axle(s), including full fuel, all fluids and LP Gas. The UVW does not include cargo, fresh potable water, additional optional equipment or dealer installed accessories.

*Estimated Average based on standard build optional equipment.

CCC (Cargo Carrying Capacity) ** is the amount of weight available for fresh potable water, cargo, passengers, additional optional equipment and accessories. CCC is equal to GVWR minus UVW. Available CCC should accommodate fresh potable water (8.3 lbs per gallon). Before filling the fresh water tank, empty the black and gray tanks to provide for more cargo capacity.

** Estimated average based on standard build optional equipment

Each Coachmen motorhome is weighed at the manufacturing facility prior to shipping. A label identifying the unloaded vehicle weight of the actual unit and the cargo carrying capacity is applied to every Coachmen motorhome prior to leaving our facilities.

The load capacity of your unit is designated by weight, not by volume, so you cannot necessarily use all available space when loading your unit.

Actual towing capacity is dependent upon your particular loading and towing circumstances, which includes the GVWR, GAWR and GCWR as well as adequate trailer brakes. Please refer to the Operator's Manual of your vehicle for further towing information.

Your FREELANDER Dealer



Learn More
Scan this barcode using a QR Reader on your smart phone to learn more about Forest River.



A Berkshire Hathaway company.

CUSTOMER SATISFACTION



www.ForestRiverBuyLocal.com



423 N. Main Street • P.O. Box 30
Middlebury, IN 46540

To learn more about Coachmen RV and our products and see how Coachmen is making the easy life easier, call us toll free at (800) 353-7383, or visit www.coachmenrv.com



Coachmen RV Owner Digital Kit App

Now you can have your Owners Manual with you wherever you are. Download our free App from iTunes and you'll have the information at your fingertips.

All information contained in this brochure is believed to be accurate at the time of publication. However, during the model year, it may be necessary to make revisions and Coachmen reserves the right to make all such changes without notice, including prices, colors, materials, equipment and specifications as well as the addition of new models and the discontinuance of models shown in this brochure. Therefore, please consult with your Coachmen dealer and confirm the existence of any materials, design or specifications that are material to your purchase decision. 02/17

©Copyright 2017 Coachmen RV a Division of Forest River Inc – All Rights Reserved.