

no bo



FOREST RIVER

FORESTRIVERINC.COM



FOREST RIVER

A Berkshire Hathaway Company

BUILT AND BACKED BY FOREST RIVER

Founded in 1996 by Pete Liegl, Forest River, Inc. has evolved into North America's largest manufacturer of recreational vehicles, cargo trailers, pontoon boats, and commercial vehicles including buses, vans, and trucks. Its portfolio includes market share leaders in every category, and it is the country's leading manufacturer of buses and vans for both the private and public sectors. Based in Elkhart, Indiana, Forest River employs 14,000+ employees in 100+ facilities in more than a half dozen states. With a commitment to excellence and a focus on customer satisfaction, Forest River is proud to be a Berkshire Hathaway company.

**NEVER
STOP
GOING.™**

FORESTRIVERINC.COM



At No Boundaries, we believe the only limits that exist are the ones we accept.

Born from a restless spirit and a hunger for more, No Boundaries is more than a brand — it's a mindset. It's for the dreamers, the doers, the rebels, and the creators. The ones who dare to ask, "What if?" and then go out and live the answer.

We exist for those who push past fear, break through convention, and refuse to be boxed in — in life, in style, in purpose. Whether you're carving your own path through a crowded world or simply chasing your next high, No Boundaries is your companion in the pursuit of freedom, authenticity, and growth.

Everything we design, create, and share is built to inspire you to move beyond comfort zones — to challenge the expected, to embrace change, and to live with unapologetic confidence. Because when you live with no boundaries, you live without limits.

Join the movement. Rewrite your story.

Live with No Boundaries.





KEY FEATURES

- Enclosed underbelly with forced heat
- 12V heating pads on all tanks
- On demand tankless water heater
- Outside kitchen
- 200W Solar - 2000 W inverter prepped
- Central vac system
- Large refrigerator
- Ultimate bedroom storage
- Upgraded dinette table leg (Flexidine)

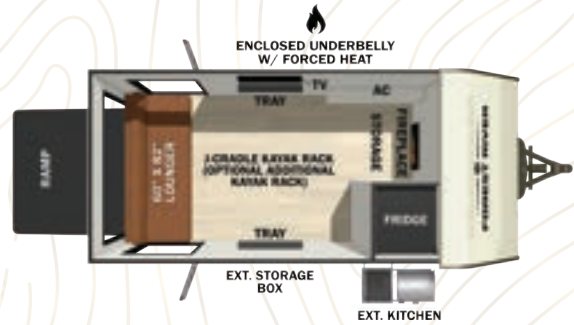
10.4

C-SERIES

UVW: 2,179 lb
 HITCH: 285 lb
 CCC: 1,606 lb
 LENGTH: 13' 10"

BEAST MODE

UVW: 2,179 lb
 HITCH: 285 lb
 CCC: 1,606 lb
 LENGTH: 13' 10"



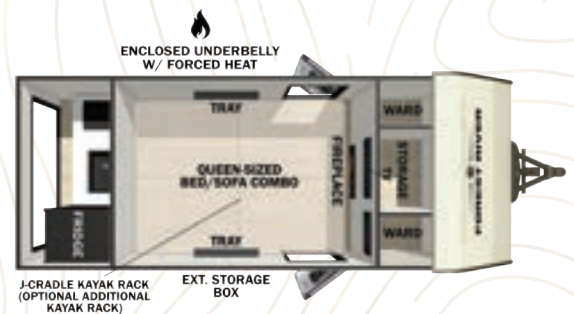
10.7

C-SERIES

UVW: 2,274 lb
 HITCH: 225 lb
 CCC: 1,451 lb
 LENGTH: 15' 10"

BEAST MODE

UVW: 2,329 lb
 HITCH: 250 lb
 CCC: 1,421 lb
 LENGTH: 15' 10"



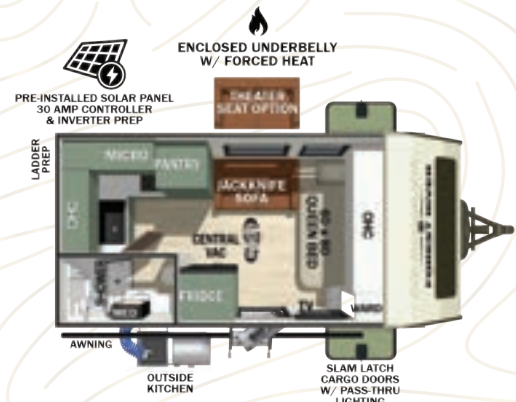
18.0

C-SERIES

UVW: 3,829 lb
 HITCH: 510 lb
 CCC: 1,081 lb
 LENGTH: 20' 0"

BEAST MODE

UVW: 4,109 lb
 HITCH: 530 lb
 CCC: 1,271 lb
 LENGTH: 20' 0"



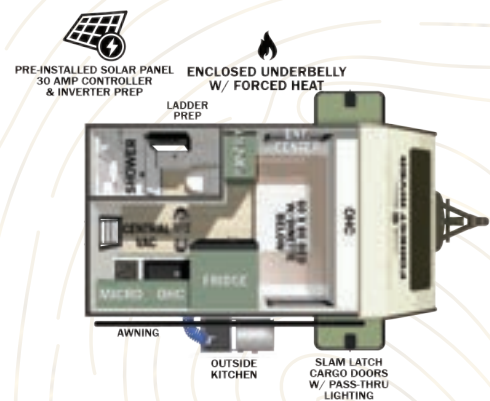
18.1

C-SERIES

UVW: 3,019 lb
 HITCH: 305 lb
 CCC: 1,500 lb
 LENGTH: 14' 11"

BEAST MODE

UVW: 3,439 lb
 HITCH: 450 lb
 CCC: 1,500 lb
 LENGTH: 14' 11"



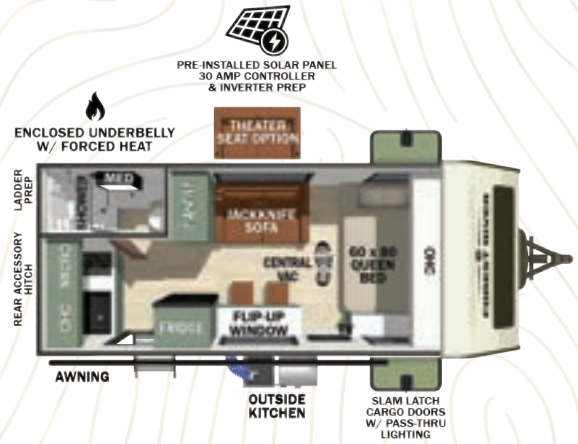
18.2

C-SERIES

UVW: 4,028 lb
 HITCH: 485 lb
 CCC: 857 lb
 LENGTH: 21' 8"

BEAST MODE

UVW: 4,143 lb
 HITCH: 500 lb
 CCC: 1,227 lb
 LENGTH: 21' 8"



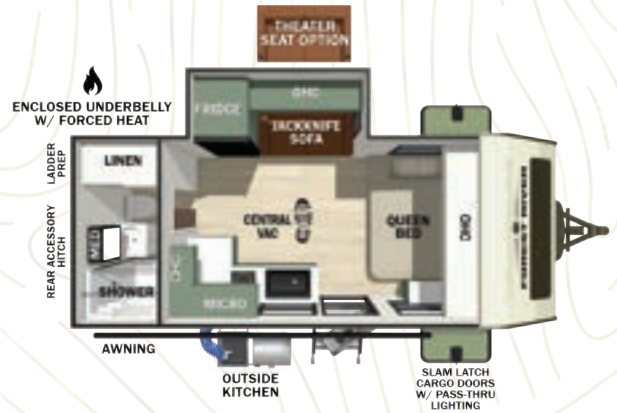
18.3

C-SERIES

UVW: 4,103 lb
 HITCH: 545 lb
 CCC: 1,500 lb
 LENGTH: 20' 6"

BEAST MODE

UVW: 4,341 lb
 HITCH: 615 lb
 CCC: 1,144 lb
 LENGTH: 20' 6"



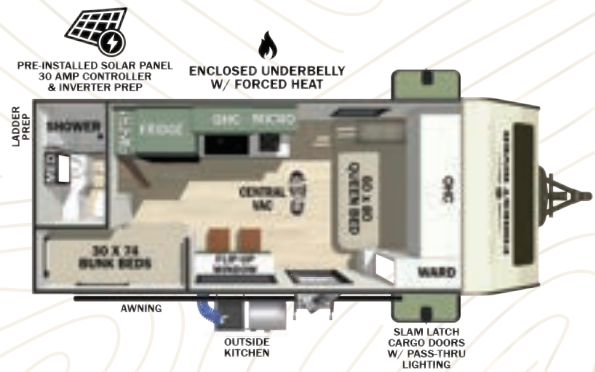
18.7

C-SERIES

UVW: 3,988 lb
 HITCH: 580 lb
 CCC: 1,500 lb
 LENGTH: 21' 8"

BEAST MODE

UVW: 4,248 lb
 HITCH: 605 lb
 CCC: 1,227 lb
 LENGTH: 21' 8"



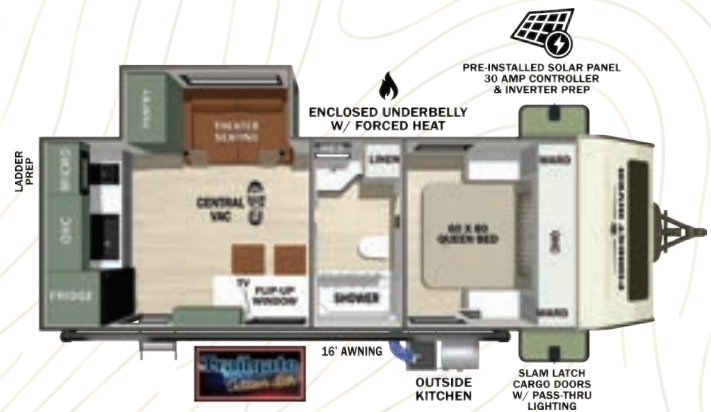
19.0

C-SERIES

UVW: TBD lb
 HITCH: TBD lb
 CCC: TBD lb
 LENGTH: 24' 11"

BEAST MODE

UVW: 5,313 lb
 HITCH: 675 lb
 CCC: 1,500 lb
 LENGTH: 24' 11"



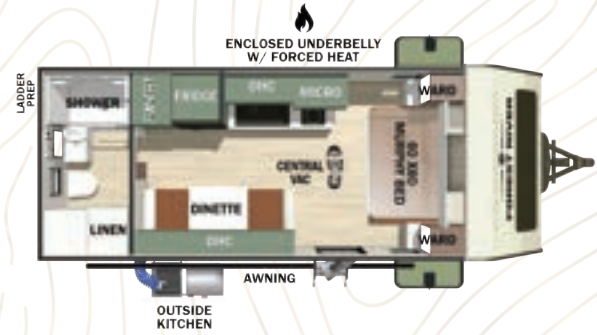
19.2

C-SERIES

UVW: 3,779 lb
 HITCH: 510 lb
 CCC: 1,131 lb
 LENGTH: 21' 10"

BEAST MODE

UVW: 4,024 lb
 HITCH: 550 lb
 CCC: 1,396 lb
 LENGTH: 21' 10"



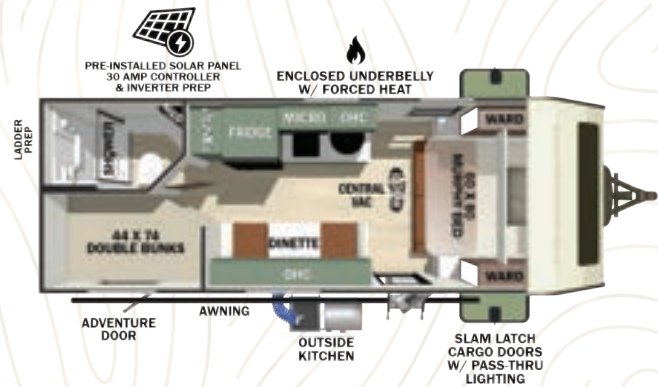
19.3

C-SERIES

UVW: 4,489 lb
 HITCH: 610 lb
 CCC: 1,500 lb
 LENGTH: 24' 8"

BEAST MODE

UVW: 4,824 lb
 HITCH: 645 lb
 CCC: 1,500 lb
 LENGTH: 24' 8"



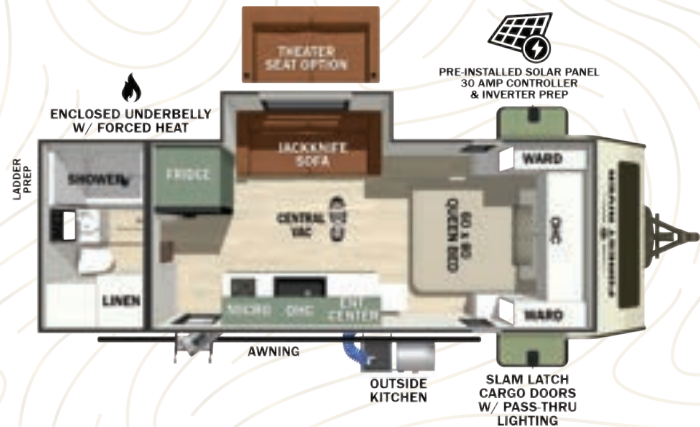
19.4

C-SERIES

UVW: 3,954 lb
 HITCH: 455 lb
 CCC: 901 lb
 LENGTH: 24' 2"

BEAST MODE

UVW: 4,469 lb
 HITCH: 540 lb
 CCC: 941 lb
 LENGTH: 24' 2"



19.6

C-SERIES

UVW: 4,645 lb
 HITCH: 610 lb
 CCC: 1,500 lb
 LENGTH: 25' 2"

BEAST MODE

UVW: 5,098 lb
 HITCH: 665 lb
 CCC: 1,500 lb
 LENGTH: 25' 2"



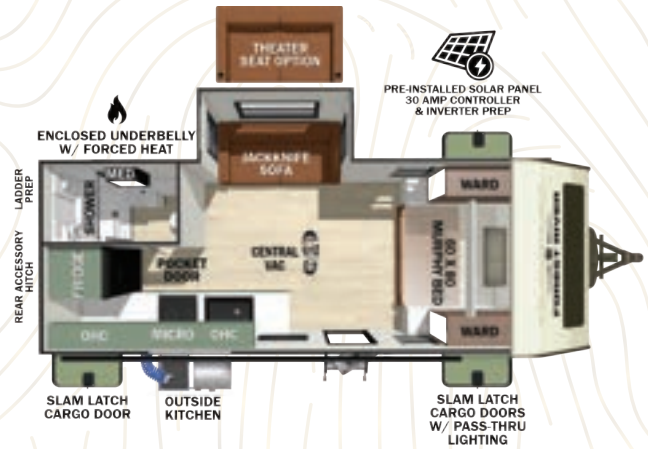
20.1

C-SERIES

UVW: 4,983 lb
 HITCH: 650 lb
 CCC: 1,500 lb
 LENGTH: 24' 3"

BEAST MODE

UVW: 5,493 lb
 HITCH: 705 lb
 CCC: 1,500 lb
 LENGTH: 24' 3"



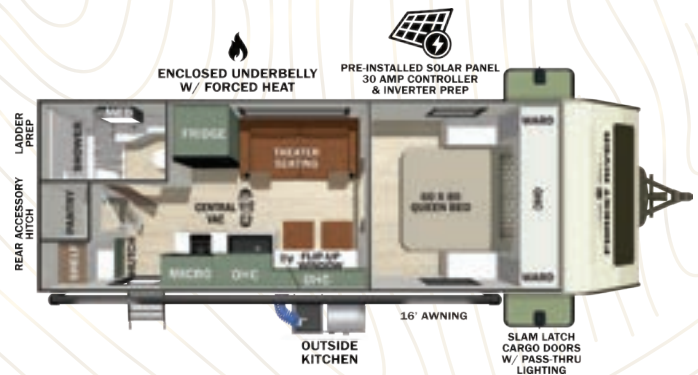
20.2

C-SERIES

UVW: TBD lb
 HITCH: TBD lb
 CCC: TBD lb
 LENGTH: 25' 0"

BEAST MODE

UVW: 5,398 lb
 HITCH: 610 lb
 CCC: 1,500 lb
 LENGTH: 25' 0"



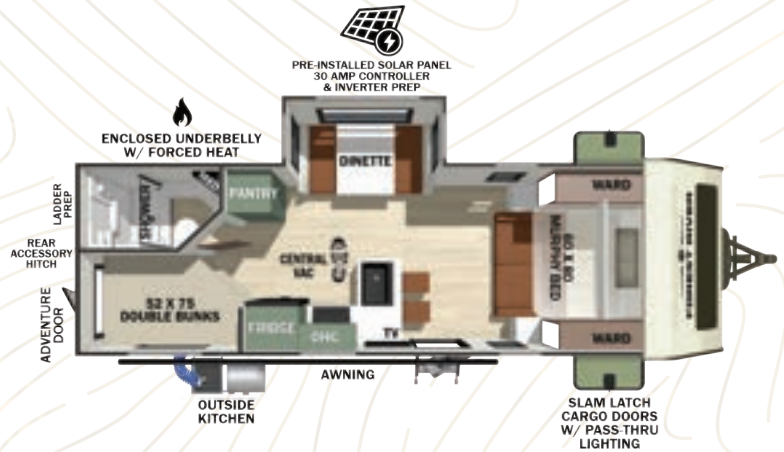
20.3

C-SERIES

UVW: 5,193 lb
 HITCH: 685 lb
 CCC: 1,500 lb
 LENGTH: 26' 2"

BEAST MODE

UVW: 5,673 lb
 HITCH: 730 lb
 CCC: 1,500 lb
 LENGTH: 26' 2"



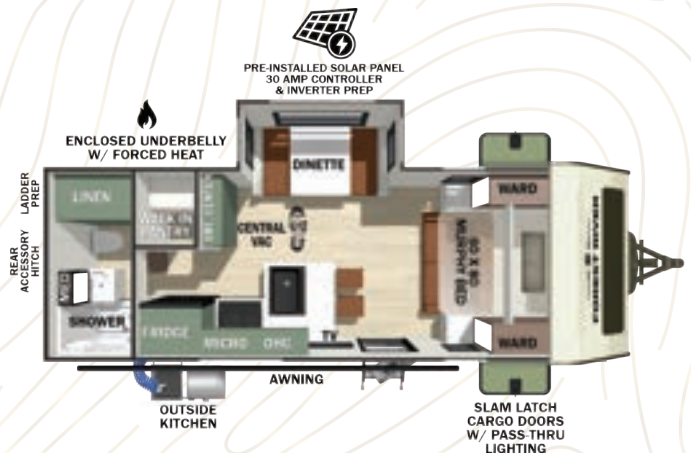
20.4

C-SERIES

UVW: 4,938 lb
 HITCH: 590 lb
 CCC: 1,500 lb
 LENGTH: 24' 4"

BEAST MODE

UVW: 5,373 lb
 HITCH: 670 lb
 CCC: 1,500 lb
 LENGTH: 24' 4"



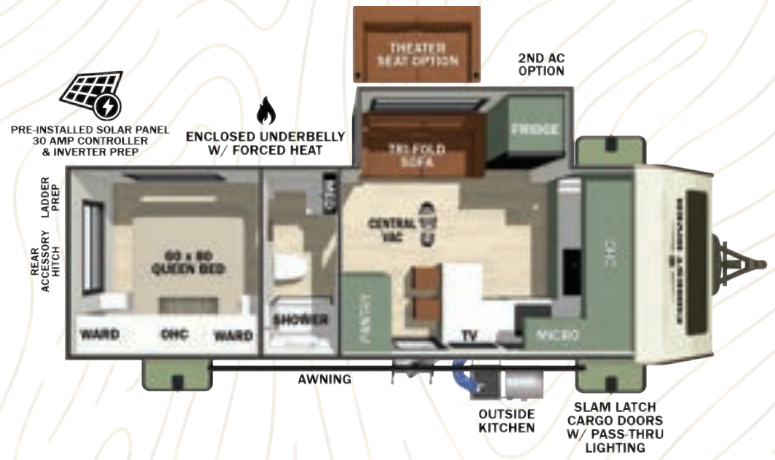
20.5

C-SERIES

UVW: 5,603 lb
 HITCH: 765 lb
 CCC: 1,500 lb
 LENGTH: 27' 9"

BEAST MODE

UVW: 6,003 lb
 HITCH: 810 lb
 CCC: 1,500 lb
 LENGTH: 27' 9"



20.7

C-SERIES

UVW: 5,623 lb
 HITCH: 790 lb
 CCC: 1,500 lb
 LENGTH: 29' 0"

BEAST MODE

UVW: 6,203 lb
 HITCH: 920 lb
 CCC: 1,500 lb
 LENGTH: 29' 0"



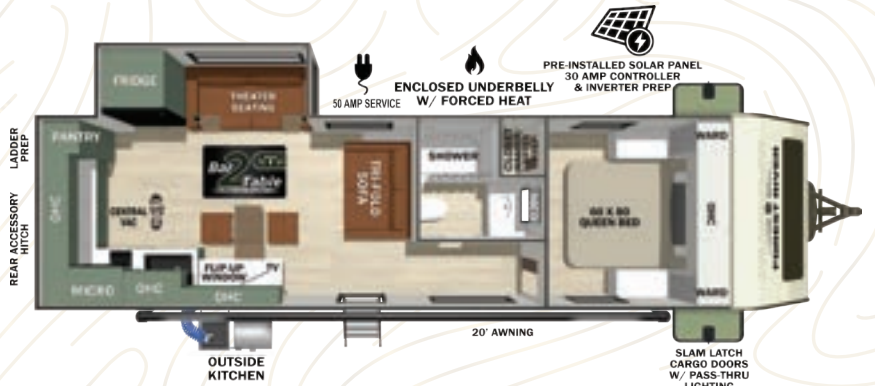
20.8

C-SERIES

UVW: TBD lb
 HITCH: TBD lb
 CCC: TBD lb
 LENGTH: TBD

BEAST MODE

UVW: 6,903 lb
 HITCH: 620 lb
 CCC: 717 lb
 LENGTH: 32' 6"



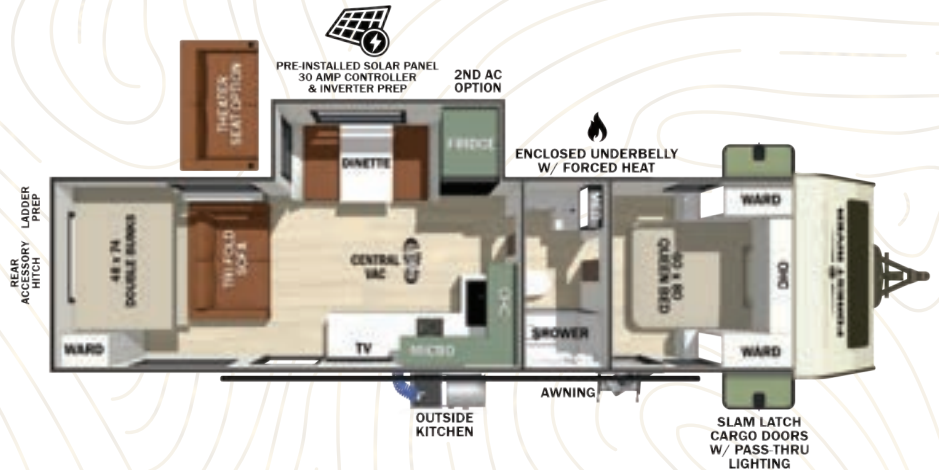
20.9

C-SERIES

UVW: 2,094 lb
 HITCH: 275 lb
 CCC: 1,500 lb
 LENGTH: 15' 0"

BEAST MODE

UVW: 2,204 lb
 HITCH: 270 lb
 CCC: 1,566 lb
 LENGTH: 15' 0"



RVS3

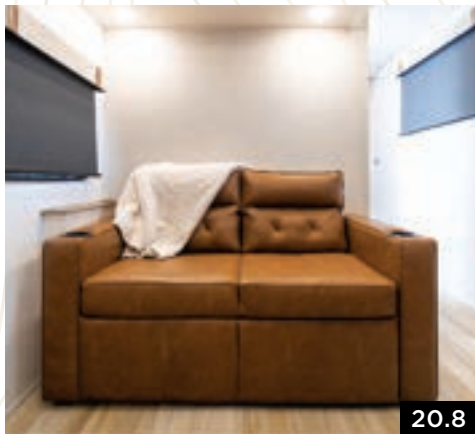
C-SERIES

UVW: 10,490 lb

HITCH: 1,435 lb

CCC: 1,145 lb

LENGTH: 40' 0"



NO BOUNDARIES SPECIFICATIONS

C-SERIES SPECIFICATIONS

Floorplan	Length	Height	Width	Hitch	UVW	CCC	Fresh Water	Gray Water	Black Water
10.4	13' 10"	8' 6"	88"	285	2,179	1,606	30 gal	0 gal	0 gal
10.7	15' 0"	8' 6"	88"	225	2,274	1,451	30 gal	0 gal	0 gal
18.0	20' 0"	11' 2"	96"	510	3,829	1,081	30 gal	30 gal	30 gal
18.1	14' 11"	10' 10"	96"	305	3,019	1,500	30 gal	30 gal	30 gal
18.2	21' 8"	10' 10"	96"	485	4,028	857	30 gal	30 gal	30 gal
18.3	20' 6"	11' 2"	96"	545	4,103	1,500	40 gal	40 gal	30 gal
18.7	21' 8"	10' 10"	96"	580	3,988	1,500	30 gal	30 gal	30 gal
19.0	24' 11"	10' 11"	88"	620	5,043	1,500	30 gal	30 gal	30 gal
19.2	21' 10"	10' 9"	88"	510	3,779	1,131	30 gal	30 gal	30 gal
19.3	24' 8"	10' 9"	88"	610	4,489	1,500	30 gal	30 gal	30 gal
19.4	24' 2"	10' 9"	88"	455	3,954	901	30 gal	30 gal	30 gal
19.6	25' 2"	10' 9"	88"	610	4,645	1,500	30 gal	30 gal	30 gal
20.1	24' 3"	11' 3"	96"	650	4,983	1,500	40 gal	40 gal	30 gal
20.2	25' 0"	11' 3"	96"	570	5,003	1,500	40 gal	40 gal	30 gal
20.3	26' 2"	11' 3"	96"	685	5,193	1,500	40 gal	40 gal	30 gal
20.4	24' 4"	11' 3"	96"	590	4,938	1,500	40 gal	40 gal	30 gal
20.5	27' 9"	11' 3"	96"	765	5,603	1,500	40 gal	40 gal	30 gal
20.7	29' 0"	11' 3"	96"	790	5,623	1,500	40 gal	40 gal	30 gal
20.8	32' 6"	11' 3"	96"	765	6,753	1,500	40 gal	60 gal	30 gal
20.9	32' 11"	11' 3"	96"	965	6,353	1,500	40 gal	40 gal	30 gal
RVS3	40' 0"	13' 6"	96"	1,435	10,490	1,145	90 gal	60 gal	30 gal

BEAST MODE SPECIFICATIONS

Floorplan	Length	Height	Width	Hitch	UVW	CCC	Fresh Water	Grey Water	Black Water
10.4	13' 10"	8' 6"	88"	285	2,179	1,606	30 gal	0 gal	0 gal
10.7	15' 0"	8' 6"	88"	250	2,329	1,421	30 gal	0 gal	0 gal
18.0	20' 0"	11' 2"	96"	530	4,109	1,271	30 gal	30 gal	30 gal
18.1	14' 11"	11' 2"	96"	450	3,439	1,500	30 gal	30 gal	30 gal
18.2	21' 8"	11' 1"	96"	500	4,143	1,227	30 gal	30 gal	30 gal
18.3	20' 6"	11' 2"	96"	615	4,341	1,144	40 gal	40 gal	30 gal
18.7	21' 8"	11' 2"	96"	605	4,248	1,227	30 gal	30 gal	30 gal
19.0	24' 11"	10' 11"	88"	675	5,313	1,500	30 gal	30 gal	30 gal
19.2	21' 10"	10' 11"	88"	550	4,024	1,396	30 gal	30 gal	30 gal
19.3	24' 8"	10' 11"	88"	645	4,824	1,500	30 gal	30 gal	30 gal
19.4	24' 2"	10' 10"	88"	540	4,469	941	30 gal	30 gal	30 gal
19.6	25' 2"	10' 11"	88"	665	5,098	1,500	30 gal	30 gal	30 gal
20.1	24' 3"	11' 6"	96"	705	5,493	1,500	40 gal	40 gal	30 gal
20.2	25' 0"	11' 6"	96"	610	5,398	1,500	40 gal	40 gal	30 gal
20.3	26' 2"	11' 6"	96"	730	5,673	1,500	40 gal	40 gal	30 gal
20.4	24' 4"	11' 6"	96"	670	5,373	1,500	40 gal	40 gal	30 gal
20.5	27' 9"	11' 6"	96"	810	6,003	1,500	40 gal	40 gal	30 gal
20.7	29' 0"	11' 3"	96"	920	6,203	1,500	40 gal	40 gal	30 gal
20.8	32' 6"	11' 6'	96"	620	6,903	1,500	40 gal	60 gal	30 gal
20.9	32' 11"	11' 3"	96"	965	6,353	1,500	40 gal	40 gal	30 gal

STANDARDS & OPTIONS

STANDARD FEATURES:

- Platform entry steps with night light
- Fiberglass front cap (N/A on 10 Series)
- Enclosed underbelly with forced heat & radiant foil insulation
- 12V heating pads on all tanks
- 60" x 80" queen bed
- Large refrigerators
- Premium window treatments
- All terrain tires with TPMS
- Air fryer microwave
- USB-C ports inside and out
- convenient motion lighting
- 4 speed high powered bath fan
- Hot & cold exterior spray port
- Large kitchen sink with cup washer
- Slam latch cargo doors
- Large holding tanks
- On demand tankless water heater
- 15,000 BTU A/C
- 200W solar panel / 30 AMP solar controller & inverter prep
- Central vacuum system
- Rear accessory hitch (N/A on 19 Series and 18.1)
- Upgraded shower enclosure
- Ultimate bedroom storage
- 12V TV
- Welded aluminum structure
- Laminated walls and slideouts with AZDEL composite panels
- Fully walkable PVC roof
- Extended season ready

OPTIONS:

- Beast Mode package
- Beast Mode independent suspension
- 400W solar package with 2000W inverter
- Fresh water filter
- Maxxair roof vent cover
- 2nd bedroom 13.5k A/C (available on 20.5, 20.7, 20.8, 20.9)

no  bo



SCAN FOR ADDITIONAL
INFO, PHOTOS, AND MORE!

EACH NEW FOREST RIVER PURCHASE PROVIDES:

- ✓ Pre-delivery Inspection. ✓ Digital Owner's Manual.
- ✓ Free Membership to Forest River Owners Group (FROG).
Learn more at www.forestriverfrog.com.
- ✓ A Contribution to Care Camps Foundation www.carecamps.org.
- ✓ 1 Year Free Roadside Assistance from Date of Purchase.



LEARN MORE:

Scan this QR code with your mobile device to learn more about Forest River.



SPECIFICATION DEFINITIONS:

Scan this barcode using a QR reader on your smartphone to learn RV terminology and more!



YOUR **NO BOUNDARIES** DEALER