

Jayco | Seneca & Seneca Prestige Class C Motorhome

SENECA & SENECA PRESTIGE

POWER AND LUXURY COMBINED



2+3
YEAR | YEAR
WARRANTY

INTERIOR DESIGN



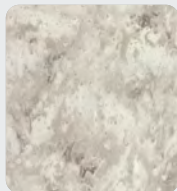
RICHMOND



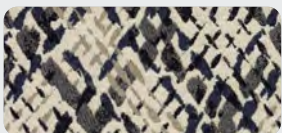
Wood



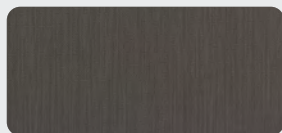
Floor



Countertop

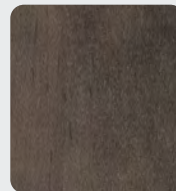


Main Fabric

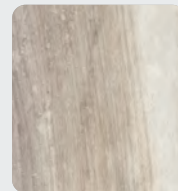


Furniture

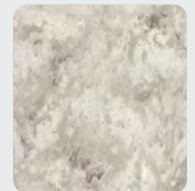
CROSSVILLE



Wood



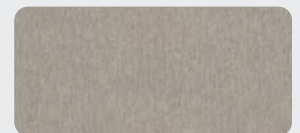
Floor



Countertop



Main Fabric



Furniture

37K OPTIONS: A, D



37L OPTIONS: A, B



37M OPTIONS: A, C, D



37RB OPTIONS: A, B, D



37TS OPTIONS: A, B, D



OPTIONS

A



12 Cu. Ft. Fridge

B



Theater Sofa

C



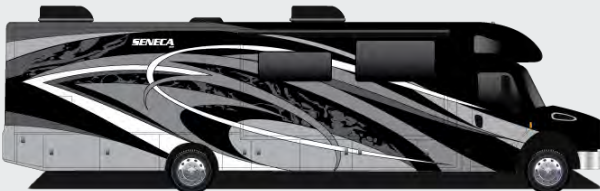
Hide-a-bed

D

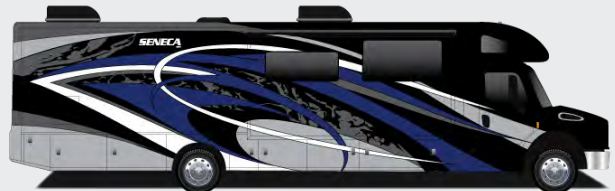


Freestanding Dinette

EXTERIOR SELECTIONS



Acadia Full-Body Paint



Blue Spruce Full-Body Paint



Mahogany Full-Body Paint



Yellowwood Full-Body Paint

STANDARDS & OPTIONS

CUSTOMER VALUE PACKAGE

JRIDE® PREMIUM: Computer-balanced driveshaft, rear air suspension, heavy-duty rear stabilizer bar, full air brakes, SACHS shocks
One-piece, seamless, fiberglass front and rear caps
Automotive-bonded, panoramic window in front cap with power shade
Dual-pane, tinted, safety-glass windows
(2) 15,000 BTU A/C units with heat pumps
Electric patio awning with LED lights
2,000-watt pure sine wave inverter
Power cord reel with 50-amp service
Girard® tankless LP water heater
Sony® infotainment center with Apple® CarPlay and Android Auto™
Backup and side-view cameras
21 cu.ft. residential refrigerator with ice and water in door
Convection microwave oven

DRIVING

Freightliner® S2RV chassis
GVWR- 31,000 lb.
GCWR- 43,000 lb.
Cummins® ISB 6.7L 360 HP diesel engine with 800 ft.-lb. torque
Allison® 3000 MH automatic transmission
185-amp alternator
G-rated highway tires- 275/80R22.5
Alcoa® aluminum rims
Engine exhaust brake
12,000-lb. rear hitch receiver
7-pin plug
Dual 12V chassis batteries
100 gal. fuel tank
10 gal. DEF tank
Deluxe heated, remote-controlled, side-view mirrors
Driver and passenger airbags
Power windows and door locks
Tilt steering wheel
A/C and cruise control
Auxiliary start switch

EXTERIOR

StrongholdVBL™ roof, floor and sidewalls
Bead-foam insulation (R-24 max roof, R-9 max floor and R-5 max walls)
One-piece, crowned fiberglass roof
Premium Sikkens full-body paint
Automatic hydraulic leveling jacks
Entrance door with industry's largest travel-view window
Electric-powered entrance step
Slideout cover awnings
Exterior entertainment center with outside speakers, LED TV mounted on swivel bracket and single-disc DVD/CD/AM/FM radio
Winegard® In-motion satellite dish
Lockable, pass-through storage compartments with metal slam latches
24.5 gal. propane tank (83 lb.)
LP quick-connect hookup
Thetford® Sani-Con Turbo Macerator system
Exterior utility center
Winterization drain system
Black tank flush

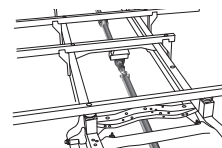
Outside shower
12V demand water pump
Onan® 8,000-watt Quiet Diesel generator and auto-gen start
Transfer switch with reverse polarity protection
(4) 6V AGM (220Ah) house batteries on slideout tray
190W solar panel with dual controller
Flush-mount LED marker lights
Third brake light
Porch light

INTERIOR

Custom-molded ABS surround in cab-over area
Overhead bunk with 750 lb. capacity
Privacy curtain for cab area
JAYCOMMAND® powered by Firefly
84 in. interior ceiling height with padded vinyl ceiling
High-intensity, recessed LED ceiling lights
Vinyl plank flooring
Raised-panel, hardwood cabinetry throughout
Deluxe hidden cabinet hinges
Ball-bearing drawer guides
Jayco-exclusive, easy-operation legless dinette table
2-point lap safety belts in all designated seating locations
34,000 BTU auto-ignition furnace
Furrion® electric fireplace (N/A 37TS)
LED HD Smart Fire TV in living area
Cable TV hookup with RG-6 coax and video selector switch
Winegard 2.0 Wi-Fi/4G antenna
Wood-framed kitchen window with spice cabinets
2-burner induction cooktop
LED-lit, solid-surface kitchen countertops with integrated stainless steel sink and sink covers
Pull-out countertop extension (select models)
Water filtration system
One-piece, fiberglass shower with glass door, skylight and light
Porcelain toilet with foot flush
LED-lit, stainless-steel bathroom sink
Powered roof vent in bathroom with wall switch
Walk-around king-size bed with bedspread and nightstands
Under-bed storage
LED TV in bedroom
Large wardrobes
Bunks with industry-exclusive 300 lb. capacity each (37L)
Smoke alarm
Carbon monoxide detector

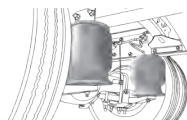
OPTIONS

Power theater seating (N/A 37K, STD on 37M)
Freestanding table with 4 chairs (N/A 37L)
12 cu.ft. gas/electric, 4-door refrigerator
Combination washer/dryer (N/A 37K)
Stackable washer/dryer (37K)
Canadian Shaw® TRAV'LER® satellite dish
Winegard® TRAV'LER® satellite dish - DIRECTV®
Slide-out tray with 12V refrigerator cooler in basement
Hide-a-bed sofa (37M)



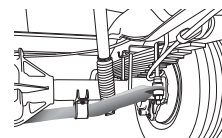
COMPUTER-BALANCED DRIVESHAFT

Ensures smooth and efficient power transfer to the wheels



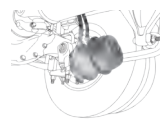
REAR AIR SUSPENSION

Softens ride and improves handling



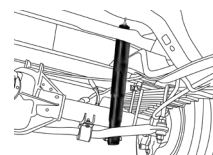
HEAVY-DUTY REAR STABILIZER BAR

A larger bar and polyurethane bushings, instead of rubber, transfer power faster for extra support, more stability and easier handling



FULL AIR BRAKES

Deliver robust stopping power, even on grades



SACHS SHOCKS ABSORBERS

Large diameter tube design pairs gas and hydraulics to resist heat and pressure while independently adjusting to changing road conditions

FLOORPLAN	GVWR (lbs.)	GCWR (lbs.)	WHEEL BASE	OVERALL LENGTH	EXTERIOR HEIGHT WITH SATELLITE AND A/C	EXTERIOR WIDTH	INTERIOR HEIGHT	FRESH WATER CAPACITY (gal.)	GRAY WASTE WATER CAPACITY (gal.)	BLACK WASTE WATER CAPACITY (gal.)
37K	31,000	43,000	279"	39' 4"	13' 4"	101"	84"	72	51/40	40/23
37L	31,000	43,000	279"	39' 4"	13' 4"	101"	84"	72	50/31	50
37M	31,000	43,000	279"	39' 4"	13' 4"	101"	84"	72	50/31	50
37RB	31,000	43,000	279"	39' 4"	13' 4"	101"	84"	72	40/40	33/23
37TS	31,000	43,000	279"	39' 4"	13' 4"	101"	84"	72	40	50



SENECA PRESTIGE

OPTIONS

A



Hide-a-bed

B



Theater Sofa

C



Freestanding Dinette

37K

OPTIONS: C



37L

OPTIONS: B



37M

OPTIONS: A, C



EXTERIOR SELECTIONS



Beige Marvel Full-Body Paint



Blue Marvel Full-Body Paint



Grey Marvel Full-Body Paint



Red Marvel Full-Body Paint

STANDARDS & OPTIONS

CUSTOMER VALUE PACKAGE

JRIDE® PREMIUM: Computer-balanced driveshaft, rear air suspension, heavy-duty rear stabilizer bar, full air brakes, SACHS shocks
Dual-pane, tinted, safety-glass windows
Roof-mounted Girard® NOVA II dual-pitched patio awning with LED lights
2,000-watt pure sine wave inverter
Power cord reel with 50-amp service
Aqua-Hot® 250D hydronic water and heating system
9" Sony® infotainment center with Apple CarPlay® and Android Auto™
Backup and side-view cameras
21-cu.ft. side by side residential refrigerator with ice and water in door
Residential-size convection microwave

DRIVING

Freightliner® S2RV chassis
GVWR-31,000 lb.
GCWR - 43,000 lb.
Front axle - 10,000 lb.
Drive axle - 21,000 lb.
Cummins® ISB 6.7L 360 HP diesel engine with 800 ft.-lb. torque
Allison® 3000 MH automatic transmission
185-amp alternator
Michelin® tires- 275/80R 22.5 14 ply
Alcoa® aluminum rims
Engine exhaust brake
12,000-lb. rear hitch receiver
7-pin plug
Dual 12V chassis batteries - 1900 CCA
100 gal. fuel tank
10 gal. DEF tank
Deluxe heated, remote-controlled, side-view mirrors
Power driver and passenger seats
Driver and passenger airbags
Power windows and door locks
A/C and cruise control
Tilt and telescoping leather-wrapped steering wheel
Auxiliary start switch

EXTERIOR

StrongholdVBL™ roof, floor and sidewalls
Bead-foam insulation (R-24 max roof, R-9 max floor, R-5 max walls)
One-piece, crowned fiberglass roof
One-piece, seamless, fiberglass front and rear caps
Automotive-bonded panoramic window in front cap with power shade
Premium Sikkens full-body paint
Automatic hydraulic leveling jacks
Entrance door with industry's largest travel-view window
Electric-powered entrance step
Slideout cover awnings
Exterior entertainment center with outside speakers, LED TV mounted on swivel bracket and single-disc DVD/CD/AM/FM radio
Winegard® In-motion satellite dish
Lockable, pass-through storage compartments with metal slam latches

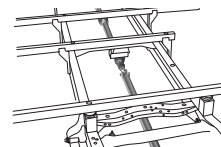
Chrome exterior baggage door handles and locks
Thetford® Sani-Con Turbo Macerator system
Exterior utility center
Winterization drain system
Black tank flush
Outside shower
12V demand water pump
Onan® 8,000-watt diesel generator with auto-gen start
(4) 6V AGM (220Ah) house batteries on slideout tray
190W solar panel with dual controller
Third brake light
Porch light with clear lens
Roof ladder

INTERIOR

Custom-molded ABS surround in cab-over area
Overhead bunk with 750 lb. capacity
Privacy curtains for cab area
Carpeted cab floor mat
JAYCOMMAND® powered by Firefly (mobile app available)
High-intensity, recessed LED ceiling lights
Porcelain floor tile with heated floor mat
Raised-panel high-gloss hardwood cabinetry and stiles throughout
Deluxe hidden cabinet hinges
Jayco-exclusive, easy-operation legless dinette table
2-point lap safety belts in all designated seating locations
Dual 15,000-BTU A/C unit with heat pumps
Touchstone electric 5,000 BTU thermostat controlled fireplace
50 in. LED TV in living area (40 in. on 37K)
Cable TV hookup with RG-6 coax and video selector switch
Winegard 2.0 Wi-Fi/4G antenna
Wood-framed kitchen window with spice cabinets
2-burner induction cooktop
Solid-surface kitchen countertop with large integrated stainless steel sink with sink covers
Water filtration system
One-piece, fiberglass shower with glass door, skylight and light
Porcelain toilet with foot flush
Solid-surface bathroom sink
Powered roof vent in bathroom with wall switch
Walk-around, king-size bed with bedspread and nightstands
32" LED TV in bedroom
Large wardrobes
Bunks with industry-exclusive 300lb. capacity each (37L)
Smoke alarm
Carbon monoxide detector

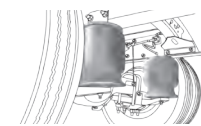
OPTIONS

Power theater seating (N/A 37K, STD on 37M)
Canadian Shaw® TRAV'LER® satellite dish
Winegard® TRAV'LER® satellite dish - DIRECTV®
Winegard® TRAV'LER® satellite dish - Dish Network®
Stackable washer/dryer
Freestanding table with 4 chairs (N/A 37L)



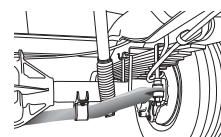
COMPUTER-BALANCED DRIVESHAFT

Ensures smooth and efficient power transfer to the wheels



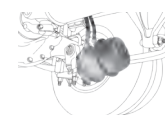
REAR AIR SUSPENSION

Softens ride and improves handling



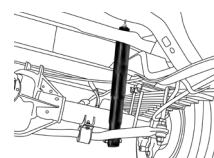
HEAVY-DUTY REAR STABILIZER BAR

A larger bar and polyurethane bushings, instead of rubber, transfer power faster for extra support, more stability and easier handling



FULL AIR BRAKES

Deliver robust stopping power, even on grades



SACHS SHOCKS ABSORBERS

Large diameter tube design pairs gas and hydraulics to resist heat and pressure while independently adjusting to changing road conditions

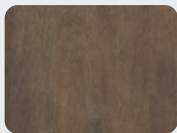
FLOORPLAN	GVWR (lbs.)	GCWR (lbs.)	WHEEL BASE	OVERALL LENGTH	EXTERIOR HEIGHT WITH SATELLITE AND A/C	EXTERIOR WIDTH	INTERIOR HEIGHT	FRESH WATER CAPACITY (gal.)	GRAY WASTE WATER CAPACITY (gal.)	BLACK WASTE WATER CAPACITY (gal.)
37K	31,000	43,000	279"	39' 4"	13' 4"	101"	84"	72	51/40	40/23
37L	31,000	43,000	279"	39' 4"	13' 4"	101"	84"	72	50/31	50
37M	31,000	43,000	279"	39' 4"	13' 4"	101"	84"	72	40/40	33/23

INTERIOR DESIGN



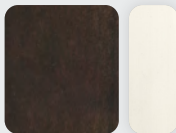
WOOD SELECTIONS

STONEWALL GREY



Wood

AUBURN MAPLE



Wood

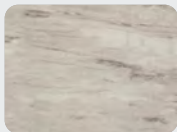
Accent

ALMOND MAPLE



Wood

Accent



Flooring



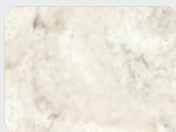
Flooring



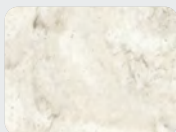
Flooring



Countertop



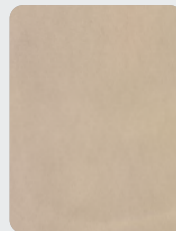
Countertop



Countertop

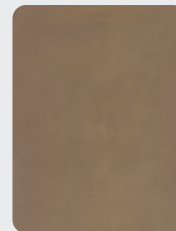
FABRIC SELECTIONS

EGGSHELL



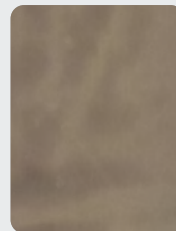
Furniture

PINECONE

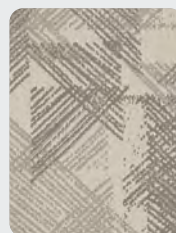


Furniture

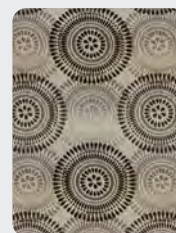
ONYX



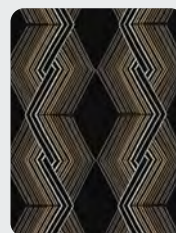
Furniture



Main Fabric



Main Fabric



Main Fabric

THE JAYCO DIFFERENCE



A FOUNDATION BUILT TO DELIVER FOR THE LONG HAUL

1. **Freightliner® S2RV chassis**
2. **Cummins® ISB 6.7L 360 HP diesel engine** features a 43,000-lb. GCWR and a 31,000-lb. GVWR; a 12,000-lb. -rated hitch; 800-lb. torque; and a gas-strut assisted hood for easy engine access
3. **Allison® 3000 MH automatic transmission** delivers power, control and traction
4. **100-gal., single-fill, between-the-rails fuel tank**
5. **Michelin® 275/80R 22.5" tires**



TRAVEL WITH CONFIDENCE • NO ONE OFFERS A BETTER WARRANTY

At Jayco, we build our RVs to handle every adventure, then back them with our industry-leading 2+3 limited warranty. Our 2-year limited warranty has you covered for 2 camping seasons. That's 730 days. In addition, our 3-year structural limited warranty has you covered for 3 camping seasons or 1,095 days. You won't find a better limited warranty in the business, because the only strings that we attach are those that deliver the ultimate in reliability. That's the Jayco difference. So go explore. For a copy of our 2-year limited + 3-year structural limited warranty with complete terms and conditions, please contact your local Jayco dealer.

Meet your Jayco Dealer



Scan QR
code for
specification
definitions



Some specs at the time of print may include estimates.
For the most updated information, please visit
Jayco.com/seneca or Jayco.com/seneca-prestige

Jayco, Inc. | P.O. Box 460 | Middlebury, IN 46540

See dealer for further information and prices. All information in this brochure and on www.jayco.com is the latest available at the time of publication approval. Jayco reserves the right to make changes and to discontinue models without notice or obligation. Photography may show optional equipment or props used for decoration purposes only. RVs built for sale in Canada may differ to conform to Canadian codes. JAYCO and the JAYCO BIRD IN FLIGHT are registered trademarks of Jayco, Inc. Printed in USA 9/21 ©2021 Jayco, Inc. 257069

Jayco - Part of the Jayco Family of Companies