

Jayco | 2026 Pinnacle Fifth Wheel



PINNACLE

TOP OF THE LINE LUXURY

2+3
YEAR | YEAR
WARRANTY





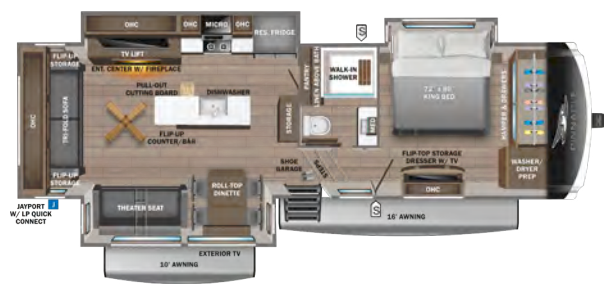
2026 PINNACLE 38FBRK FIFTH WHEEL



PINNACLE FIFTH WHEEL



32RLTS OPTIONS: A, B



36FBTS OPTIONS: A, B



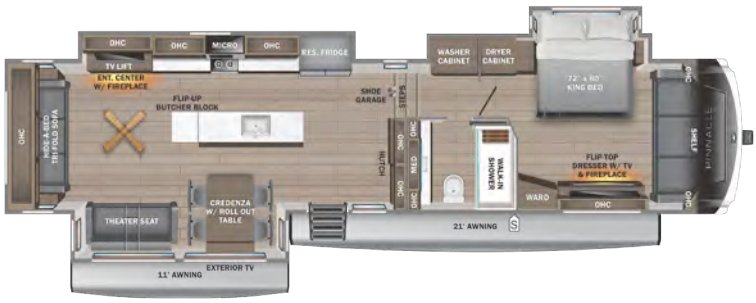
38FBRK OPTIONS: A, B



38KPTS OPTIONS: A, B



38SSWS OPTIONS: A, B, C




NEW! 39FLOK OPTIONS: A, B




OPTIONS

A




12V 20 Cu. Ft. Frige

B




Queen Bed

C



Front Wardrobe

-  STORAGE
- MICRO** MICROWAVE
- OHC** OVERHEAD CABINETS
- FRIDGE** REFRIGERATOR
- WARD** WARDROBE

PAINT OPTIONS



Midnight Charcoal Full-Body Paint



Midnight Gold Full-Body Paint



Silver Metallic Full-Body Paint

STANDARDS & OPTIONS

EXTERIOR

102 in. widebody construction
 12 in. structural steel I-beam with 8 or 10 in. monster beam steel drop frame
 120V heat blankets on all tanks plus 12V heat tape on fresh water line
 3,000 lb. tow hitch with 4-way pin
 Battery disconnect
 Built in sewer hose carrier
 Climate Shield™ zero-degree tested weather protection:
 40,000 BTU output furnace
 Double layer fiberglass batt insulation (roof and floor)
 Fully enclosed and heated underbelly (ducted)
 2 in. block foam and reflective foil
 Digital TV antenna
 Exterior marine-grade speakers with Bluetooth® controller
 Frameless dark tinted safety-glass windows
 Fully enclosed, universal docking center:
 Black tank flush
 Independent satellite wiring
 Quick-connect outside shower
 Selectable water connections
 Whole coach cable hookups
 Winterization and sanitation hookups
 Inverter pre-wire to select outlets
 JayPort® outside griddle prep (standard on all floorplans without a standard outside kitchen)
 JaySMART™ (Safety Markers And Reverse Travel) LED lighting (patented)
 Magnum Truss™ XL6™ Roof System with Alpha roof membrane system
 Painted fiberglass front and rear cap with clear coat and built-in specialty LED lighting
 Pass-through storage with Slam-latch™ baggage doors
 Skirt metal enclosed drop frame
 Stronghold VBL™ aluminum framed and vacuum bond laminated gel coated fiberglass exterior walls (including slide room end walls)
 Under-mounted spare tire
 Water heater bypass

INTERIOR

12V charging station
 5/8 in. tongue-and-groove joined plywood floor and 3/8 in. plywood roof decking
 Bathroom skylight
 Built-in laundry hamper in wardrobe (select models)
 Carbon monoxide and LP detector
 Cedar-lined front wardrobe closet
 Ceiling fan (select models)
 CPAP prepped bedroom
 Flip-up countertop extension/bar top (select models)
 Flip-up hidden storage in bedroom chest of drawers (select models)
 Flip-up tabletop storage next to tri-fold sofa (select models)
 Gas-strutted under-bed storage
 Handcrafted hardwood doors, stiles, drawers and trim - hand painted with 90 poly sheen

Hidden hinges, magnet latches and soft close cabinet doors and drawers
 Integrated under-mount sink and lever faucet in main bathroom
 LED accent lighting above slideouts
 LED backlit custom framed mirror and medicine cabinet (most models)
 No in-floor heat ducts throughout coach
 Pantry with adjustable shelves include 120V outlet (most models)
 Porcelain toilet with foot flush
 Residential "Do it all" sink with pull-out kitchen faucet, glass rinse, and vegetable rinse
 Residential dove tail jointed drawers throughout
 Residential NuVo H2O whole coach water treatment system with water softening and triple cartridge filters
 Residential quilted bedspread and pillows
 "Shoe garage" in hallway step (select models)
 Soft close, heavy-duty, 75 lb. full extension, steel ball-bearing drawer guides
 Solid hardwood slide fascia
 Stain protected fabric on all furniture
 Toe kick nightlights in bedroom, bathroom and kitchen
 Tri-fold hide-a-bed sofa with sleep surface (select models)
 Vinyl flooring (made in the USA) throughout including slide rooms

CUSTOMER VALUE PACKAGE (MANDATORY)

15,000 BTU "Whisper Quiet" A/C (bedroom)
 15,000 BTU "Whisper Quiet" A/C with heat pump (main)
 On-demand tankless hot water heater
 4K SMART LED HDTV with fully digital HDMI® output and two additional HDMI® cables
 Backup, main entrance door and side observation security camera prep (includes a power switch in the bedroom to use the optional monitor for security)
 Electric patio awning (multi-color with remote control)
 Hidden hinges, magnet latches, and soft close cabinet doors
 JBL® home entertainment system with sound bar and wireless subwoofer
 Keyed-Alike™ lock system (single key for all doors/locks)
 MORryde Safe-T-Rail grab handle
 Residential king (72 in. x 80 in.) mattress with under-bed storage
 Rooftop and ground solar prep
 Wireless remote control system (includes Bluetooth® wireless interior controls) with dimmer switches
 (3) 40 lb. LP propane bottles with auto regulator
 Overlander 2 Solar Package: 30-amp controller, (1) 1800W inverter and (2) 200W solar panels
 Free standing ottoman with hinged top

LUXURY PACKAGE (MANDATORY)

17.5 in. 16 ply 'H' rated tires with SpartanLync TPMS
 Dexter® Axles with ABS and Tow Assist - includes Nev-R-Adjust® brakes and E-Z Lube® hubs
 MORryde® LRE-4000™ rubberized suspension
 MORryde® rubber pin box
 Wet bolt fasteners, bronze bushings and 4,000 lb. leaf springs

LUXURY PACKAGE (MANDATORY)

2nd electric patio awning with (multi-color with remote control)
 40 in. 4K outside Smart LED TV
 32 in. 4K Smart LED bedroom TV
 6-point hydraulic auto-leveling system
 Central vacuum system with dust port
 Day/night roller shades in living room
 Frameless dark tinted safety-glass windows
 GE 21 cu. ft. residential refrigerator with 1800W inverter
 GE Profile Series 30 in. residential convection microwave with built in air fryer
 GE Profile Series residential 24 in. range (3.7 cu. ft. with 9100 BTU high output burner)
 High gloss gel coated sidewalls
 LED fireplace with electric space heater
 MORryde® StepAbove™ entrance steps with strut assist
 Oversized multi-battery compartment (room for 4-6 batteries)
 Powered 50-amp cord reel
 Residential, solid-surface kitchen and bathroom countertops
 Residential walk-in shower with teak seat
 Solid hardwood cabinet doors, stiles, and fascia - handpainted with 90 poly sheen
 Residential "Do it all" sink
 Washer/dryer prep
 Pull out "Roll Top" dinette with two free standing chairs and two folding chairs
 Azdel® JAYCOMMAND™ Smart RV System
 Residential NuvoH2O whole coach water treatment system with water softening and triple cartridge filters

OPTIONS

20 cu. ft. 12V refrigerator
 3rd 15,000 BTU ducted A/C
 Generator prep
 5,500W Onan® Microquiet generator
 7,000W generator (est. start date 1/26)
 7,000 lb. hydraulic disc brake package (ABS N/A with disc brakes)
 8,000 lb. hydraulic disc brake package (ABS N/A with disc brakes)
 Frameless dual-pane tinted safety-glass windows
 Front wardrobe in place of front windshield and sofa lounge (38SSWS)
 Full body paint- Midnight Gold, Silver Metallic, Midnight Charcoal
 MORryde independent suspension and shocks with 8,000 axles and disc brakes (ABS not available)
 Outside Halo griddle for JayPort® system or outside kitchens includes LP quick connect (select models)
 Queen residential foam-top mattress
 Slideout awning(s) (quantity varies by model)

The 5-Star Handling Package (MANDATORY) is a Jayco exclusive, a powerful blend of high-end American-made components that make pulling a luxury fifth wheel a breeze.



DEXTER® AXLES WITH ABS & TOW ASSIST - INCLUDES NEV-R-ADJUST® BRAKES & E-Z LUBE® HUBS

The Benchmark of the trailer industry!



MORryde® PIN BOX

Allows pin box to travel forward and backward as well as side-to-side, creating a smoother tow.



DEXTER® HEAVY-DUTY 1/2" SHACKLES WITH WET BOLT FASTENERS AND BRONZE BUSHINGS

Resists the wear-and-tear of towing.



MORryde® RUBBERIZED SUSPENSION SYSTEM

Better absorbs and isolates road shock.



'H' RATED TIRES

17.5 in. 16-ply 'H' Rated with SpartanLync TPMS

*Indicates split tanks

| FLOORPLAN | TOTAL EXTERIOR LENGTH | EXTERIOR WIDTH | EXTERIOR HEIGHT (WITH A/C) | INTERIOR HEIGHT (MAIN) | INTERIOR HEIGHT (UPPER DECK) | UNLOADED VEHICLE WEIGHT | DRY HITCH WEIGHT | GVWR | CARGO CARRYING CAPACITY | FRESH WATER CAPACITY (INCLUDING WATER HEATER) | GRAY WASTE WATER CAPACITY | BLACK WASTE WATER CAPACITY | SLEEPING CAPACITY |
|-----------|-----------------------|----------------|----------------------------|------------------------|------------------------------|-------------------------|------------------|--------|-------------------------|---|---------------------------|----------------------------|-------------------|
| 32RLTS | 36' 0" | 8' 6" | 13' 4" | 8' 5" | 6' 8" | 13,545 | 2,510 | 16,600 | 3,055 | 75 | 87* | 50 | 2-4 |
| 36FBTS | 40' 10" | 8' 6" | 13' 3" | 8' 4" | 6' 7" | 14,255 | 2,535 | 17,500 | 3,245 | 75 | 87* | 87* | 2-4 |
| 38FBRK | 43' 10" | 8' 6" | 13' 5" | 8' 6" | 6' 7" | 15,448 | 2,940 | 18,200 | 2,752 | 75 | 87* | 87* | 2-4 |
| 38KPTS | 41' 0" | 8' 6" | 13' 4" | 8' 6" | 6' 7" | 14,600 | 2,800 | 17,700 | 3,100 | 75 | 87* | 50 | 2-4 |
| 38SSWS | 43' 2" | 8' 6" | 13' 3" | 8' 6" | 6' 7" | 15,415 | 3,350 | 18,700 | 3,285 | 75 | 87* | 50 | 2-4 |
| 39FLOK | TBD | TBD | TBD | TBD | TBD | TBD | TBD | TBD | TBD | TBD | TBD | TBD | TBD |

Meet your Jayco Dealer



Scan QR code for specification definitions



Some specs at the time of print may include estimates. For the most updated information, please visit Jayco.com

Jayco, Inc. | P.O. Box 460 | Middlebury, IN 46540

See dealer for further information and prices. All information in this brochure and on www.jayco.com is the latest available at the time of publication approval. Jayco reserves the right to make changes and to discontinue models without notice or obligation. Photography may show optional equipment or props used for decoration purposes only. RVs built for sale in Canada may differ to conform to Canadian codes. JAYCO and the JAYCO BIRD IN FLIGHT are registered trademarks of Jayco, Inc. Printed in USA 10/25 ©2025 Jayco, Inc. 2033110

Jayco - Part of Jayco Family of Companies