



EAGLE TT

ADVENTURES AROUND EVERY BEND



INTERIOR DESIGN



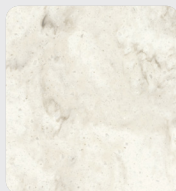
AMERICAN CRAFTSMAN



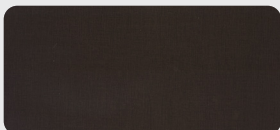
Wood



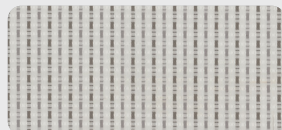
Floor



Countertop

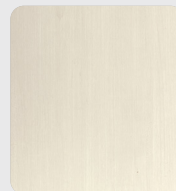


Main Fabric



Accent Fabric

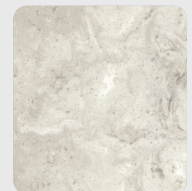
MODERN FARMHOUSE



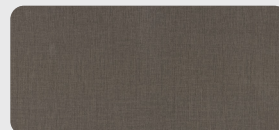
Wood



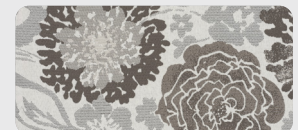
Floor



Countertop

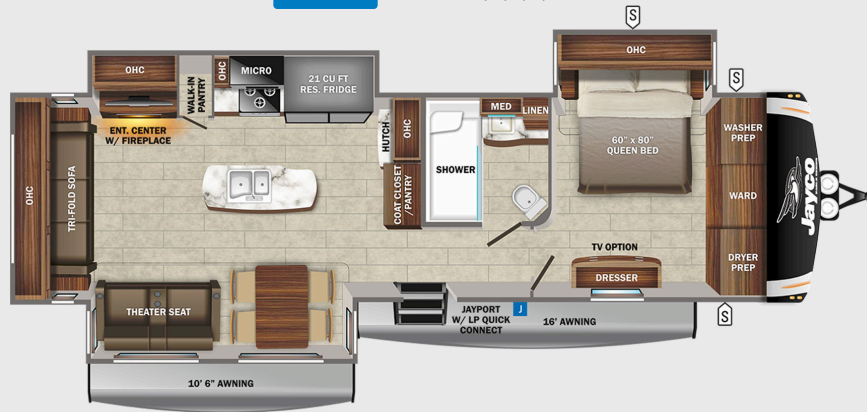


Main Fabric



Accent Fabric

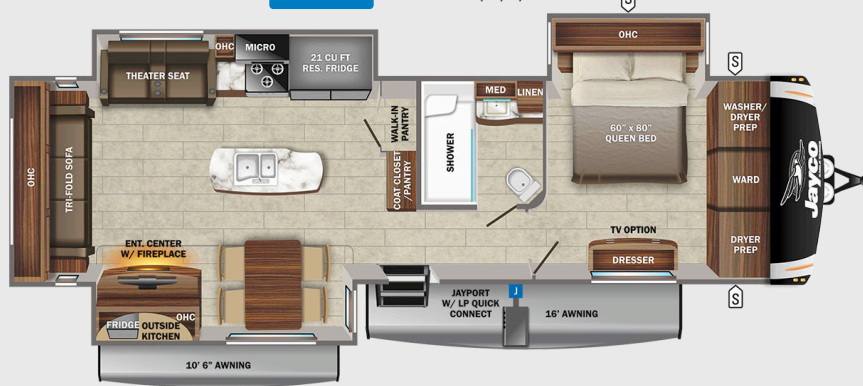
330RSTS OPTIONS: A, B, C, D, E




332CBOK OPTIONS: A, B, C, D





334RLOK OPTIONS: A, B, C, D





OPTIONS


-  STORAGE
- MICRO** MICROWAVE
- OHC** OVERHEAD CABINETS
- FRIDGE** REFRIGERATOR
- WARD** WARDROBE

- 

A
Dinette
- 

B
Table & Chairs/Bench
- 

C
13 Cu. Ft. Fridge
- 

D
King Bed
- 

E
Griddle

STANDARDS & OPTIONS

EXTERIOR

- StrongholdVBL™ aluminum framed and vacuum bond laminated gelcoated fiberglass exterior walls (including rear wall and slide room end walls)
- Magnum Truss™ Roof System with one piece seamless roofing material with 20 year warranty
- Climate Shield™ zero-degree tested weather protection:
 - Fully enclosed and heated underbelly (ducted)
 - 35,000 BTU output furnace
 - Double layer fiberglass batt insulation in ceiling and floor
 - Double sided radiant barrier insulation (roof, floor, and behind cap)
 - PEX plumbing
- HELIX Cooling System™ (industry exclusive):
 - Exterior-mounted 15,000 BTU "Whisper Quiet" A/C unit
 - Jayco exclusive insulated dual duct design
 - Directional and closeable A/C vents
 - Larger return air vents with user accessible filters
- JaySMART™ (Safety Markers And Reverse Travel) LED lighting (patent-pending)
- Painted fiberglass front cap with built-in specialty LED lighting
- Custom automotive-grade vinyl exterior graphics package
- LED exterior lighting package
- Detachable shore power cord
- Dual 30 lb. propane bottles with auto regulator
- Pass-through storage with Slam-latch™ baggage doors
- Digital TV antenna with Wi-Fi prep
- Exterior marine-grade speakers
- Fully enclosed, LED-lighted universal docking center:
 - Selectable water connections
 - Quick-connect outside shower
 - Black tank flush, winterization, and sanitization
 - Water heater bypass
 - Independent satellite and whole coach cable hookups
- Battery disconnect
- Under-mounted spare tire (Goodyear® Endurance®- made in the USA)
- LP quick-connect
- Slide topper/awning prep
- "Industry's BEST" outside kitchen (select models)
- Electric front landing legs with rear electric stabilizer jacks

INTERIOR

- Solid hardwood slide fascia
- Handcrafted and glazed doors, drawers, and trim
- Heavy-duty, 75 lb., full-extension, steel ball-bearing drawer guides
- 5/8 in. tongue-and-groove joined plywood floor decking
- Residential vinyl flooring (made in the USA)
- Residential vinyl flooring in slideouts (no carpet)
- LED dimmer switches (multiple locations)
- Tri-fold hide-a-bed sofa with residential sleep surface (select models)
- Theater seating (select models)
- Stainless steel kitchen sink
- Matte black kitchen faucet with pull-out sprayer
- Dual USB charging ports (multiple locations)
- Extra 120V power outlets in kitchen and slide rooms (where applicable)
- Residential quilted bedspread and pillows
- Gas-strutted under-bed storage
- Inverter pre-wire (multiple locations)
- C.P.A.P. prepped bedroom
- Carbon monoxide and LP detector
- Bathroom skylight
- LED backlit medicine cabinet with custom framed mirror
- Bathroom tile backsplash
- Blue LED nightlights in bathrooms
- Porcelain foot flush toilet

CUSTOMER VALUE PACKAGE (MANDATORY)

- MORryde® StepAbove™ entrance steps (main entrance) with blue LED light
- 15,000 BTU "Whisper Quiet" A/C
- 50-amp service with dual A/C ducts
- Electric patio awning with integrated dimmable LED lights
- 6 gal. gas/electric water heater
- Custom machined aluminum rims
- Rear 2 in. accessories receiver
- Keyed-Alike™ lock system (single key for all doors/locks)
- Rooftop and ground solar prep
- Observation camera prep (rear and sides)
- Hidden hinges on cabinet doors
- Soft-close residential kitchen drawers
- Upgraded friction hinge entrance door with XL grab handle
- 4K Ultra HD Smart TV with fully digital HDMI® output
- 12V A/V system with Bluetooth® and HDMI®
- Stainless steel range with glass cover

- Stainless steel 30 in. over the range microwave with exhaust fan
- Residential queen (60 in. x 80 in.) mattress with under-bed storage
- Rain-proof bathroom power vent

4 STAR HANDLING PACKAGE (MANDATORY)

- Goodyear® Endurance® tires (made in the USA, load range 'E')
- Dexter® Axles with Nev-R-Adjust® brakes and E-Z Lube® hubs
- MORryde® CRE-3000™ rubberized suspension
- Wet bolt fasteners, bronze bushings, and shock absorber prep

LUXURY PACKAGE (MANDATORY)

- 2nd power awning with dimmable LED lighting
- 2nd 15,000 BTU "Whisper Quiet" A/C
- JAYCOMMAND® "Smart RV" system
- LED fireplace with electric space heater
- Drinking Water System™ (patent-pending)
- Residential refrigerator
- Solid-surface kitchen countertop with bamboo sink cover and strainer
- Blackout roller shades
- Washer/dryer prep
- Tire Pressure Monitoring System (TPMS)

OPTIONS

- Extreme Weather Package with 110V heat pads
- Generator prep
- Wireless observation camera kit
- Overlander II Solar Kit (2-190W panels, MPPT RVC 30 amp solar controller and 1800W inverter)
- Frameless dual-pane tinted safety-glass windows
- Canadian Standards (CSA)
- Electric auto-leveling system
- Custom contemporary or traditional interior design (industry first)
- Free-standing rustic table with leaf and bench seat, 2 storage & 2 folding chairs
- Booth dinette (select models)
- 4 door gas/electric refrigerator (select models)
- Residential 72 in. x 80 in. king-size mattress
- 32 in. LED TV in master bedroom
- Outside griddle for JayPort system

*Indicates split tanks

FLOORPLAN	EXTERIOR TRAVEL LENGTH	EXTERIOR WIDTH	EXTERIOR HEIGHT (WITH A/C)	INTERIOR HEIGHT	UNLOADED VEHICLE WEIGHT	DRY HITCH WEIGHT	GVWR	CARGO CARRYING CAPACITY	FRESH WATER CAPACITY (INCLUDING WATER HEATER)	GRAY WASTE WATER CAPACITY	BLACK WASTE WATER CAPACITY	SLEEPING CAPACITY
330RSTS	40' 1"	8' 1"	12' 4"	7' 3"	10,600	1,300	11,995	1,395	87	97.5*	43	4-6
332CBOK	40' 1"	8' 1"	12' 4"	7' 3"	10,885	1,325	11,995	1,110	87	102*	43	3
334RLOK	40' 1"	8' 1"	12' 4"	7' 3"	10,785	1,435	12,500	1,715	87	97.5*	43	4

Meet your Jayco Dealer



Scan QR code for specification definitions

Some specs at the time of print may include estimates. For the most updated information, please visit Jayco.com/eagle-travel-trailer

Jayco, Inc. | P.O. Box 460 | Middlebury, IN 46540

See dealer for further information and prices. All information in this brochure and on www.jayco.com is the latest available at the time of publication approval. Jayco reserves the right to make changes and to discontinue models without notice or obligation. Photography may show optional equipment or props used for decoration purposes only. RVs built for sale in Canada may differ to conform to Canadian codes. JAYCO and the JAYCO BIRD IN FLIGHT are registered trademarks of Jayco, Inc. Printed in USA 11/21 ©2021 Jayco, Inc. 257084



Jayco - Part of the Jayco Family of Companies