

Jayco | 2026 Eagle SLE Fifth Wheel



EAGLE SLE FIFTH WHEEL

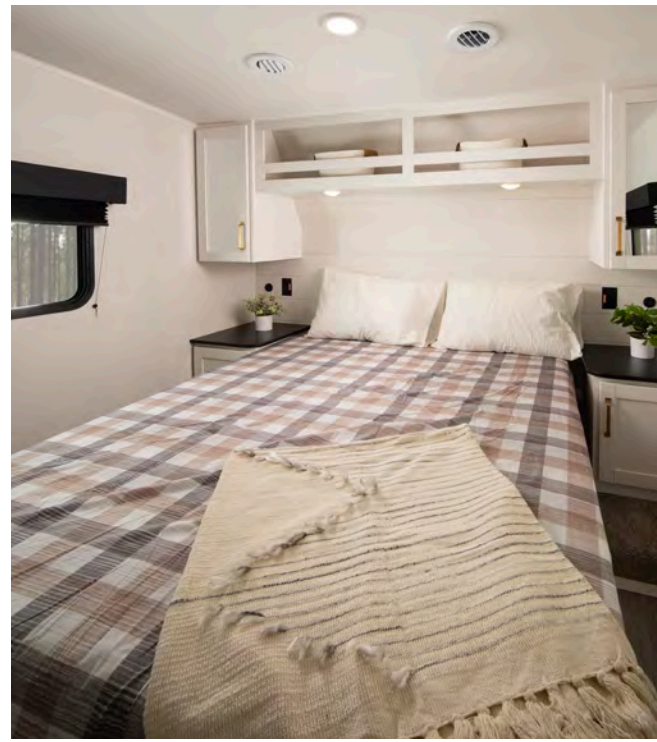
ADVENTURES AROUND EVERY BEND



2+3
YEAR | YEAR
WARRANTY



2026 EAGLE SLE 28BHU FIFTH WHEEL



EAGLE SLE FIFTH WHEEL



OPTIONS

A

Table & Chairs

B

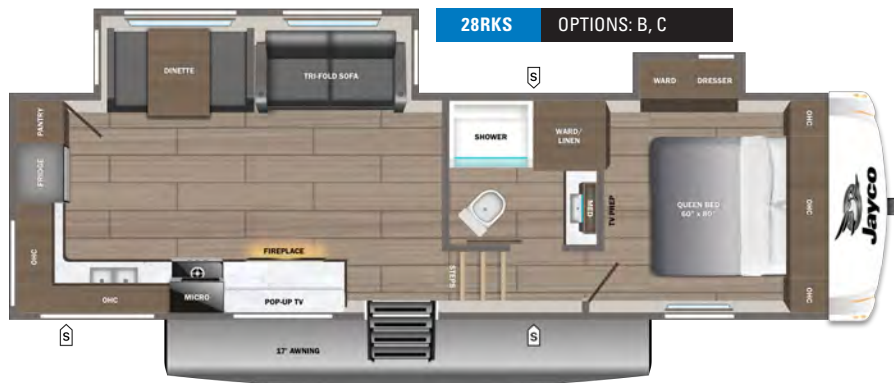
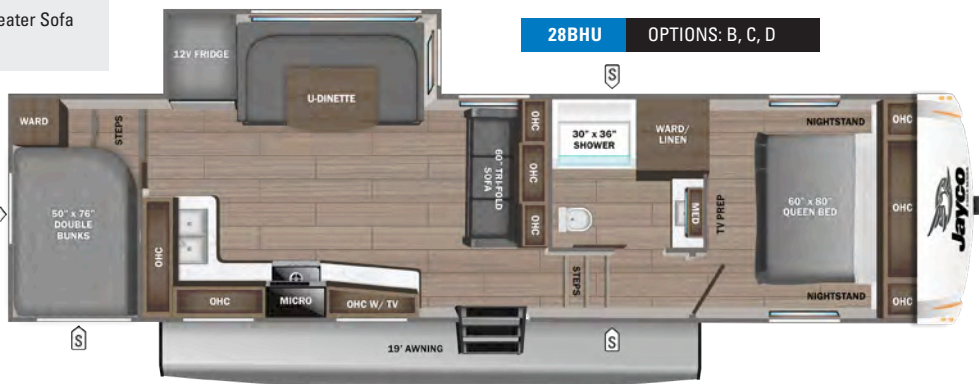
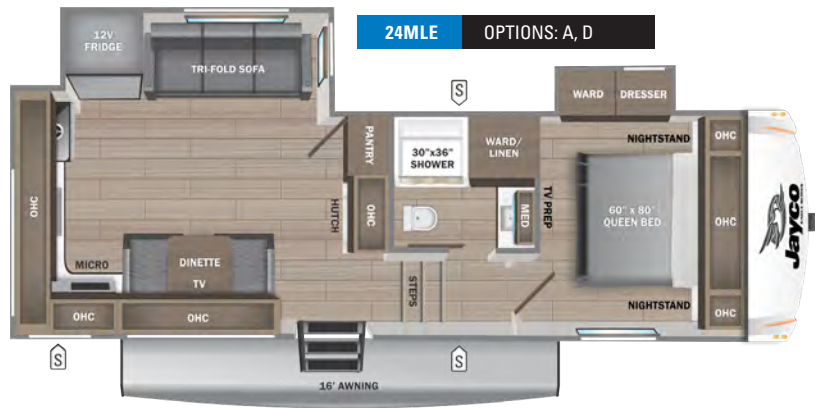
60" Theater Seat Sofa

C

Table & Chairs/Bench

D

74" Theater Sofa



S STORAGE

MICRO MICROWAVE

OHC OVERHEAD CABINETS

FRIDGE REFRIGERATOR

WARD WARDROBE

STANDARDS & OPTIONS

EXTERIOR

- 1.5 in. fresh water drain valve
- 5 in. Magnum Truss™ with plywood roof decking
- AlphaPly TPO roof membrane (thickest roof membrane with limited lifetime warranty)
- 50-amp detachable power cord
- LED lighting in pass-through area
- Auto-grade vinyl graphics
- Automotive-style front cap with max turn radius
- Black tank flush
- Climate Shield™ zero-degree tested weather protection:**
 - Fully enclosed and heated underbelly (ducted)
 - 30K BTU furnace
 - Double-layer fiberglass batt insulation in ceiling and floor
 - PEX plumbing
- Commercial-grade rubber flooring in pass-through area
- Dual 30 lb. LP bottles
- Galvanized steel-coated outside kitchens
- Independent satellite and cable hookups (outside kitchens and/or pass-through storage areas)
- HELIX Cooling System™ (industry exclusive):**
 - Jayco® exclusive insulated dual-duct design
 - Directional and closeable A/C vents
 - Larger return air vents with user-accessible filters
- LED exterior lighting package
- LP quick connect for gas griddle (next to JayPort®)
- Quick-connect water connections (door side hot/cold)
- Metal slam-latch baggage doors
- Nitrogen-filled undermount spare tire
- Slide topper/awning prep
- Stronghold VBL™ walls (laminated sidewalls, rear walls, and slide-out walls)
- Rear camera prep
- 15 in. "E" rated tires (including spare)

INTERIOR

- 2-piece high-gloss bathroom surround
- Teak seat shower prep
- 5/8 in. tongue-and-groove plywood flooring
- 75 lb. full-extension drawer guides
- Bathroom skylight
- Bedroom TV, SAT, and cable prep
- C.P.A.P.-prepped bedroom (both sides)
- Gas-strutted under-bed storage
- High-sheen handcrafted door and drawer fronts
- Medicine cabinet with custom-framed mirror
- Kitchen faucet with pull-out sprayer
- Porcelain foot-flush toilet
- Residential vinyl flooring throughout (no carpet)
- Tri-fold hide-a-bed sofa with residential memory foam sleep surface (select models)
- USB-C 12V charging ports (multiple locations throughout)
- Water shut off at all faucet locations
- 100% no floor heat vents
- 4 in. interior ceiling can light (4K lumen)
- 30 x 22 in. shower skylight
- Dexter® suspension
- Wet bolt fasteners with bronze bushings

CUSTOMER VALUE PACKAGE (MANDATORY)

- 15K BTU "Whisper Quiet" A/C and bedroom A/C prep
- 40 in. 4K Ultra LED HD Smart TV in living room
- 50-amp service with dual A/C ducts
- 60K on-demand tankless water heater
- Custom-machined aluminum rims
- Electric patio awning
- Hidden hinges on cabinet doors
- Interior "Blue Sync" Audio Connect with MB Quart sound (TV & phone)
- Keyed-Alike™ lock system
- MORryde® Step Above™ entrance step
- Rain-proof bathroom power vent

- Rear 2 in. towing receiver (4-pin connector on fifth wheels only)
- Winegard® Air 360 antenna
- 8 cu. ft. 12V refrigerator
- Inverter pre-wire throughout interior and exterior
- Electric rear stabilizer jacks
- Magnetic catches for all drawers and doors
- Overlander 1 Solar Package (200W panel and 30-amp solar controller)

OPTIONS

- 15K bedroom A/C
- Booth dinette (select models)
- Free-standing table with leaf, two chairs, and bench seat
- LED fireplace with 5K BTU electric space heater (select models)
- Overlander II Solar Package: (2) 200W panels, 30-amp controller, and 1800W inverter
- Theater seating in place of tri-fold sofa (select models)
- SpartanLync™ Tire Pressure Monitoring System

*Indicates split tanks

FLOORPLAN	TOTAL EXTERIOR LENGTH	EXTERIOR WIDTH	EXTERIOR HEIGHT (WITH A/C)	INTERIOR HEIGHT (MAIN)	INTERIOR HEIGHT (UPPER DECK)	UNLOADED VEHICLE WEIGHT	DRY HITCH WEIGHT	GVWR	CARGO CARRYING CAPACITY	FRESH WATER CAPACITY	GRAY WASTE WATER CAPACITY	BLACK WASTE WATER CAPACITY	SLEEPING CAPACITY
24MLE	29' 3"	8' 2"	12' 3"	8' 5"	6' 4"	7,855	1,485	9,500	1,645	52	82*	45	2-4
28BHU	34' 7"	8' 2"	13' 0"	8' 6"	6' 4"	8,485	1,605	9,995	1,510	51	82*	45	5-6
28RKS	TBD	TBD	TBD	TBD	TBD	TBD	TBD	TBD	TBD	TBD	TBD	TBD	TBD
30RLT	33' 12"	8' 1"	12' 2"	8' 5"	6' 3"	9,205	1,650	10,900	1,695	52	82*	45	2-4

Meet your Jayco Dealer



Scan QR code for specification definitions

Some specs at the time of print may include estimates. For the most updated information, please visit Jayco.com

Jayco, Inc. | P.O. Box 460 | Middlebury, IN 46540

See dealer for further information and prices. All information in this brochure and on www.jayco.com is the latest available at the time of publication approval. Jayco reserves the right to make changes and to discontinue models without notice or obligation. Photography may show optional equipment or props used for decoration purposes only. RVs built for sale in Canada may differ to conform to Canadian codes. JAYCO and the JAYCO BIRD IN FLIGHT are registered trademarks of Jayco, Inc. Printed in USA 010/25 ©2025 Jayco, Inc. 2033112



Jayco - Part of Jayco Family of Companies