

Jayco | Eagle HT Travel Trailer

# EAGLE HT TT

ADVENTURES AROUND EVERY BEND



# INTERIOR DESIGN



## AMERICAN CRAFTSMAN



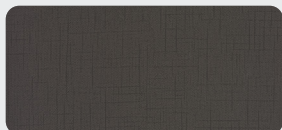
Wood



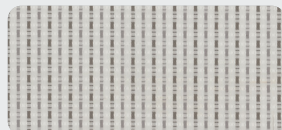
Floor



Countertop

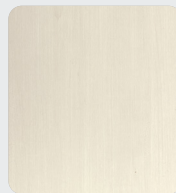


Main Fabric



Accent Fabric

## MODERN FARMHOUSE



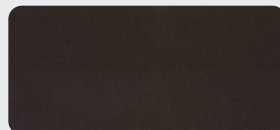
Wood



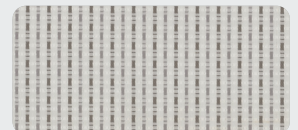
Floor



Countertop

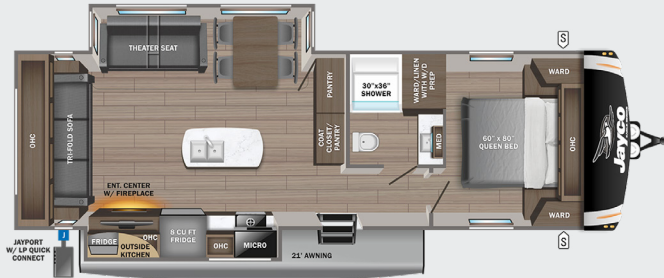


Main Fabric

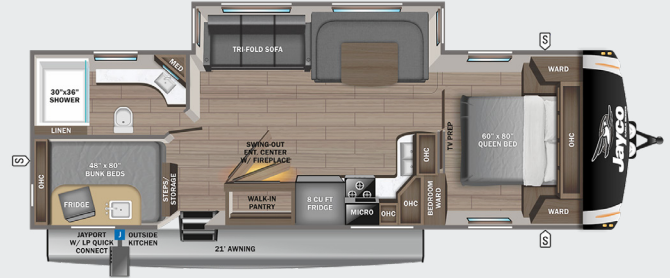


Accent Fabric

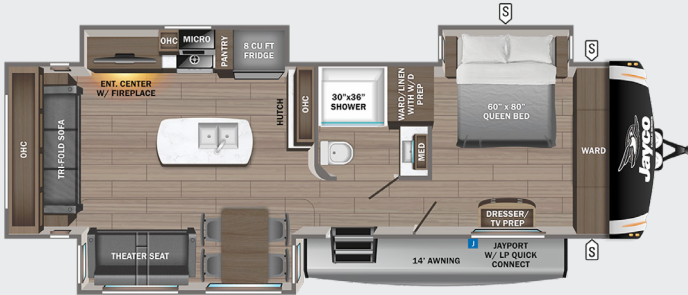
**280RSOK** OPTIONS: A, C, D, G



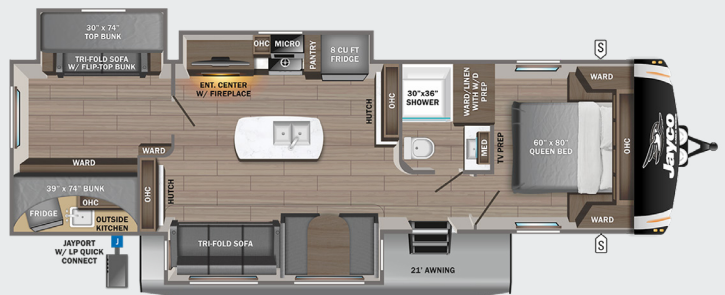
**284BHOK** OPTIONS: B, C, D, F, G



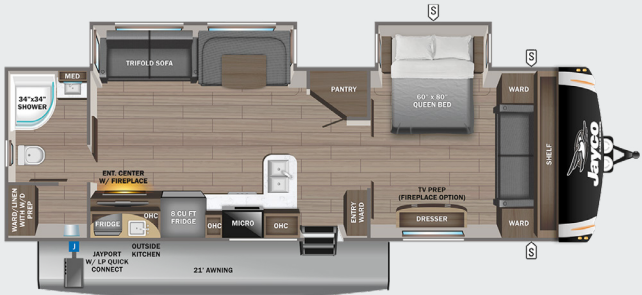
**294CKBS** OPTIONS: A, C, D, E, G, H



**312BHOK** OPTIONS: B, C, D, E, F, G



**320FBOK** OPTIONS: B, C, D, F, G



STORAGE

MICRO

OHC

FRIDGE

WARD

MICROWAVE

OVERHEAD CABINETS

REFRIGERATOR

WARDROBE

**OPTIONS**

**A**

Dinette

**B**

Table & Chairs

**C**

Table & Chairs/Bench

**D**

10 Cu. Ft. Fridge

**E**

13 Cu. Ft. Fridge

**F**

Theater Sofa

**G**

King Bed

**H**

Griddle

# STANDARDS & OPTIONS

## EXTERIOR

StrongholdVBL™ aluminum framed and vacuum bond laminated gelcoated fiberglass exterior walls (including rear wall and slide room end walls)

Magnum Truss™ Roof System with one piece seamless roofing material with 20 year warranty

Climate Shield™ zero-degree tested weather protection:

- Fully enclosed and heated underbelly (ducted)
- 35,000 BTU output furnace
- Double layer fiberglass batt insulation in ceiling and floor
- Double sided radiant barrier insulation (roof, floor and behind cap)
- PEX plumbing

HELIX Cooling System™ (industry exclusive):

- Jayco exclusive insulated dual duct design
- Directional and closeable A/C vents
- Larger return air vents with user accessible filters

JaySMART™ (Safety Markers And Reverse Travel) LED lighting (patented)

Painted fiberglass front cap with built-in specialty LED lighting

Custom automotive-grade vinyl exterior graphics package

LED exterior lighting package

Detachable shore power cord

Dual 30 lb. propane bottles with auto regulator

Pass-through storage with Slam-latch™ baggage doors

Digital TV antenna with Wi-Fi prep

Dual channel exterior marine-grade speaker

Fully enclosed, LED-lighted universal docking center:

- Selectable water connections
- Quick-connect outside shower
- Black tank flush, winterization and sanitization
- Independent satellite and whole coach cable hookups
- Water heater bypass

Battery disconnect

Under-mounted spare tire LP quick-connect

Slide topper/awning prep

"Industry's BEST" outside kitchen (select models)

## INTERIOR

Solid hardwood slide fascia

Handcrafted and glazed doors, drawers and trim

Heavy-duty, 75 lb., full-extension, steel ball-bearing drawer guides

5/8 in. tongue-and-groove joined plywood floor decking

Residential vinyl flooring (made in the USA)

Residential vinyl flooring in slideouts (no carpet)

LED dimmer switches (multiple locations)

Tri-fold hide-a-bed sofa with residential sleep surface (select models)

Theater seating (select models)

Stainless steel kitchen sink

Matte black kitchen faucet with pull-out sprayer

Dual USB charging ports (multiple locations)

Extra 120V power outlets in kitchen and slide rooms (where applicable)

Residential quilted bedspread and pillows

Gas-strutted under-bed storage

Inverter pre-wire (multiple locations)

C.P.A.P. prepped bedroom

Carbon monoxide and LP detector

Bathroom skylight

LED backlit medicine cabinet with custom framed mirror

Bathroom tile backsplash

Porcelain foot flush toilet

## CUSTOMER VALUE PACKAGE (MANDATORY)

MORyde® StepAbove™ entrance steps (main entrance) with blue LED light

15,000 BTU "Whisper Quiet" A/C

50-amp service with dual A/C ducts and second A/C prep

Electric patio awning with integrated dimmable LED lights

60,000 BTU tankless hot water system

Custom machined aluminum rims

Rear 2 in. accessories receiver

Keyed-Alike™ lock system (single key for all doors/locks)

Rooftop and ground solar prep

Security monitor prep- observation camera prep (rear, sides and entrance door)

Hidden hinges on cabinet doors

Upgraded friction hinge entrance door with XL grab handle

Smart HDTV with fully digital HDMI® output

12V A/V system with Bluetooth® and HDMI®

Stainless steel range with glass cover

Stainless steel 30 in. over-the-range microwave with exhaust vent

Rain-proof bathroom power vent

## 4 STAR HANDLING PACKAGE (MANDATORY)

Goodyear® Endurance® tires (made in the USA, load range 'E')

Dexter® Axles with Nev-R-Adjust® brakes and E-Z Lube® hubs

MORyde® CRE-3000™ rubberized suspension

Wet bolt fasteners, bronze bushings and shock absorber prep

## LUXURY PACKAGE (MANDATORY)

JAYCOMMAND® "Smart RV" system (Pro tablet)

LED fireplace with electric space heater

Blackout roller shades

Residential style glass shower doors

Tire Pressure Monitoring System (TPMS)

Washer/dryer prep (select models)

## OPTIONS

Extreme Weather Package with 120V heat pads (110V heat pads with 12V heat tape on main water line)

2nd 15,000 BTU A/C

Generator prep

360° security kit with 7 in. monitor

Frameless dual-pane tinted safety-glass windows

Canadian Standards (CSA)

Electric auto-leveling system

Free-standing rustic table with leaf and bench seat, 2 storage and 2 folding chairs

Free-standing rustic table with leaf and 2 storage and 2 folding chairs

Booth dinette (select models)

Bedroom LED fireplace, electric heater (320FBOK only)

Wall-hugger theater seating (standard on select models)

4 door gas/electric refrigerator (select models)

Residential 72 in. x 80 in. king-size mattress

Outside griddle for JayPort system (select models)

Overlander 2 Solar Package: (2) 200W panels, 30-amp digital controller and 1800W inverter

Overlander 4 Solar Package: (4) 200W solar panels, (2) 100-amp/hour lithium heated batteries, 60-amp controller, 3000W inverter, DC/DC power converter, soft start power save main 15K A/C, soft start power save for bedroom 15K A/C, battery monitor, energy management system, roof pre-wire for additional solar panels, generator prep capable and heavy gauge steel battery enclosure

\*Indicates split tanks

FLOORPLAN	TOTAL EXTERIOR LENGTH	EXTERIOR WIDTH	EXTERIOR HEIGHT (WITH A/C)	INTERIOR HEIGHT	UNLOADED VEHICLE WEIGHT	DRY HITCH WEIGHT	GVWR	CARGO CARRYING CAPACITY	FRESH WATER CAPACITY	GRAY WASTE WATER CAPACITY	BLACK WASTE WATER CAPACITY	SLEEPING CAPACITY
280RSOK	35' 7"	8' 1"	11' 7"	7' 0"	8,430	1,140	10,275	1,845	81	74*	37	4-5
284BHOK	34' 11"	8' 1"	11' 7"	7' 0"	8,040	930	9,995	1,955	81	82.5*	37	6-8
294CKBS	38' 0"	8' 1"	11' 10"	7' 0"	9,355	1,215	11,250	2,035	81	74*	37	4-6
312BHOK	38' 9"	8' 1"	11' 9"	7' 0"	9,620	1,170	11,400	1,780	81	74*	37	8-10
320FBOK	38' 0"	8' 1"	11' 8"	7' 0"	8,900	1,200	10,900	2,000	81	74*	37	4-6

Meet your Jayco Dealer



Scan QR code for specification definitions

Some specs at the time of print may include estimates. For the most updated information, please visit [Jayco.com](http://Jayco.com)

Jayco, Inc. | P.O. Box 460 | Middlebury, IN 46540

See dealer for further information and prices. All information in this brochure and on [www.jayco.com](http://www.jayco.com) is the latest available at the time of publication approval. Jayco reserves the right to make changes and to discontinue models without notice or obligation. Photography may show optional equipment or props used for decoration purposes only. RVs built for sale in Canada may differ to conform to Canadian codes. JAYCO and the JAYCO BIRD IN FLIGHT are registered trademarks of Jayco, Inc. Printed in USA 1/23 ©2023 Jayco, Inc. 2032589.2023

Jayco - Part of Jayco Family of Companies

