

Jayco | Eagle Fifth Wheel

EAGLE FW

ADVENTURES AROUND EVERY BEND



2+3
YEAR | YEAR
WARRANTY



INTERIOR DESIGN



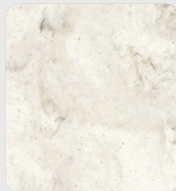
AMERICAN CRAFTSMAN



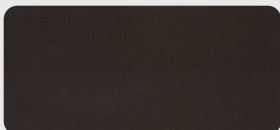
Wood



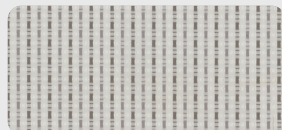
Floor



Countertop

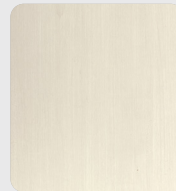


Main Fabric



Accent Fabric

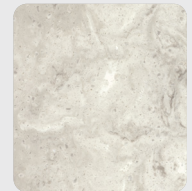
MODERN FARMHOUSE



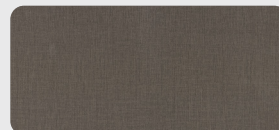
Wood



Floor



Countertop



Main Fabric

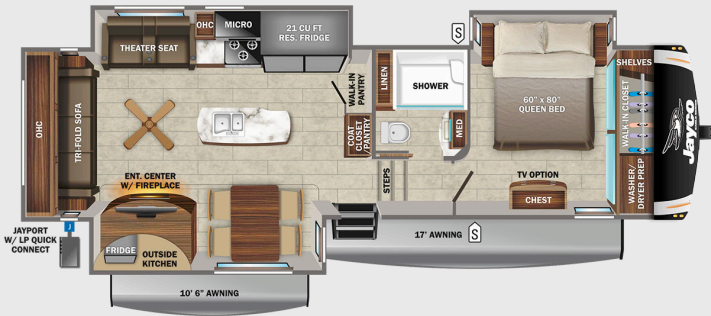


Accent Fabric

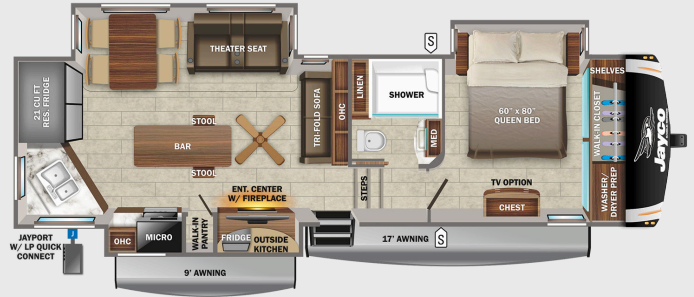


EAGLE FW

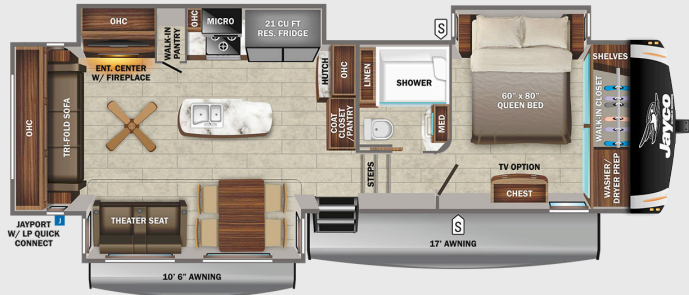
317RL0K OPTIONS: A, B, D, E



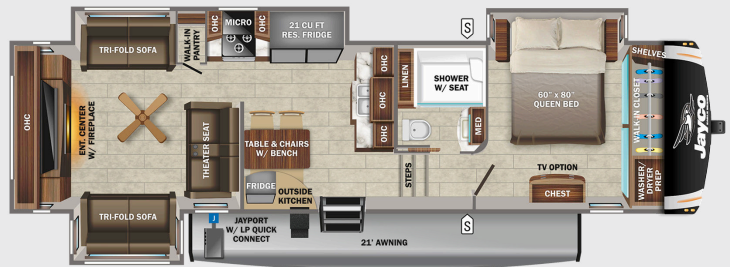
319ML0K OPTIONS: A, B, D, E



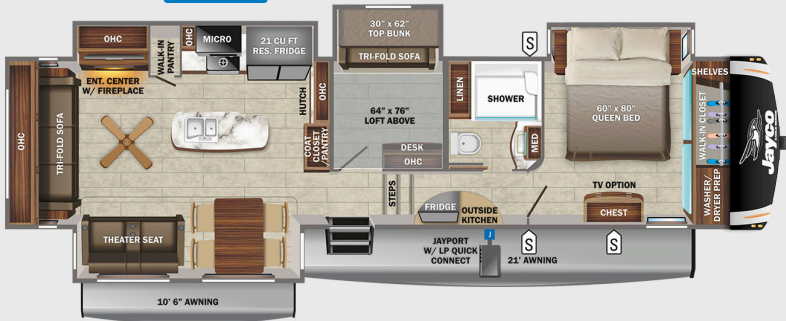
321RST5 OPTIONS: A, B, C, D, E



335RD0K OPTIONS: D, E



355MBQ5 OPTIONS: A, B, D, E



STORAGE

MICRO

MICROWAVE

OHC

OVERHEAD CABINETS

FRIDGE

REFRIGERATOR

WARD

WARDROBE

OPTIONS

A



Dinette

B



Table & Chairs/Bench

C



Griddle

D



13 Cu. Ft. Fridge

E



King Bed

STANDARDS & OPTIONS

EXTERIOR

StrongholdVBL™ aluminum framed and vacuum bond laminated gelcoated fiberglass exterior walls (including rear wall and slide room end walls)

Magnum Truss™ Roof System with one piece, seamless roofing material with 20 year warranty

Climate Shield™ zero-degree tested weather protection:

- Fully enclosed and heated underbelly (ducted)
- 35,000 BTU output furnace
- Double layer fiberglass batt insulation in ceiling and floor
- Double sided radiant barrier insulation (roof, floor & behind cap)
- PEX plumbing

HELIX Cooling System™ (industry exclusive):

- Exterior-mounted 15,000 BTU "Whisper Quiet" A/C unit
- Jayco exclusive insulated dual duct design
- Directional and closeable A/C vents
- Larger return air vents with user accessible filters

JaySMART™ (Safety Markers And Reverse Travel) LED lighting (patent-pending)

Painted fiberglass front cap with built-in specialty LED lighting

Custom automotive-grade vinyl exterior graphics package

LED exterior lighting package

Detachable shore power cord

Dual 30 lb. propane bottles with auto regulator

Pass-through storage with Slam-latch™ baggage doors

Digital TV antenna with Wi-Fi prep

Exterior marine-grade speakers

Fully enclosed, LED-lighted universal docking center:

- Selectable water connections
- Quick-connect outside shower
- Black tank flush, winterization, and sanitization
- Independent satellite and whole coach cable hookups

Water heater bypass

Battery disconnect

Under-mounted spare tire (Goodyear® Endurance® - made in the USA)

LP quick-connect

Slide topper/awning prep

"Industry's BEST" outside kitchen (select models)

Electric auto-leveling system

INTERIOR

Solid hardwood slide fascia

Handcrafted and glazed doors, drawers, and trim

Heavy-duty, 75 lb., full-extension, steel ball-bearing drawer guides

5/8 in. tongue-and-groove joined plywood floor decking

Residential vinyl flooring (made in the USA)

Residential vinyl flooring in slideouts (no carpet)

LED dimmer switches (multiple locations)

Tri-fold hide-a-bed sofa with residential sleep surface (select models)

Theater seating (select models)

Stainless steel kitchen sink

Matte black kitchen faucet with pull-out sprayer

Dual USB charging ports (multiple locations)

Extra 120V power outlets in kitchen and slide rooms (where applicable)

Residential quilted bedspread and pillows

Gas-strutted under-bed storage

Inverter pre-wire (multiple locations)

C.P.A.P. prepped bedroom

Carbon monoxide and LP detector

Bathroom skylight

LED backlit medicine cabinet with custom framed mirror

Bathroom tile backsplash

Blue LED nightlights in bathrooms

Porcelain foot flush toilet

CUSTOMER VALUE PACKAGE (MANDATORY)

MORryde® StepAbove™ entrance steps (main entrance) with blue LED light

15,000 BTU "Whisper Quiet" A/C

50-amp service with dual A/C ducts

Electric patio awning with integrated dimmable LED lights

6 gal. gas/electric water heater

Custom machined aluminum rims

Rear 2 in. towing receiver with 4 pin connector

Keyed-Alike™ lock system (single key for all doors/locks)

Rooftop and ground solar prep by Go Power!®

Observation camera prep (rear and sides)

Hidden hinges on cabinet doors

Soft-close residential kitchen drawers

Upgraded friction hinge entrance door with XL grab handle

4K Ultra HD Smart TV with fully digital HDMI® output

12V A/V system with Bluetooth® and HDMI®

Stainless steel range with glass cover

Stainless steel 30 in. over the range microwave with exhaust fan

Residential queen (60 in. x 80 in.) mattress with under-bed storage

Rain-proof bathroom power vent

4 STAR HANDLING PACKAGE (MANDATORY)

Goodyear® Endurance® tires (made in the USA, load range 'E')

Dexter® Axles with Nev-R-Adjust® brakes and E-Z Lube® hubs

MORryde® CRE-3000™ rubberized suspension

Wet bolt fasteners, bronze bushings, and shock absorber prep

LUXURY PACKAGE (MANDATORY)

2nd power awning with dimmable LED lighting

2nd 15,000 BTU "Whisper Quiet" A/C

JAYCOMMAND® "Smart RV" system

LED fireplace with 5,000 BTU electric space heater

Drinking Water System™ (patent-pending)

Residential refrigerator

Solid-surface kitchen countertop with bamboo sink cover and strainer

Blackout roller shades

Washer/dryer prep

Tire Pressure Monitoring System (TPMS)

OPTIONS

Dry Camping Package (generator prep & extra LP capacity)

Extreme Weather Package with 110V heat pads

Wireless observation camera kit

Overlander II Solar Kit (2-190W panels, MPPT RVC 30 amp solar controller and 1800W inverter)

Frameless dual-pane tinted safety-glass windows

Canadian Standards (CSA)

Custom contemporary or traditional interior design (industry first)

Free-standing rustic table with leaf and bench seat, 2 storage & 2 folding chairs

Booth dinette (select models)

4 door gas/electric refrigerator (select models)

Residential 72 in. x 80 in. king-size mattress

32 in. LED TV in master bedroom

Outside griddle for JayPort system

*Indicates split tanks

FLOORPLAN	EXTERIOR TRAVEL LENGTH	EXTERIOR WIDTH	EXTERIOR HEIGHT (WITH A/C)	INTERIOR HEIGHT (MAIN)	INTERIOR HEIGHT (UPPER DECK)	UNLOADED VEHICLE WEIGHT	DRY HITCH WEIGHT	GVWR	CARGO CARRYING CAPACITY	FRESH WATER CAPACITY (INCLUDING WATER HEATER)	GRAY WASTE WATER CAPACITY	BLACK WASTE WATER CAPACITY	SLEEPING CAPACITY
317RLOK	36' 3"	8' 1"	12' 10"	8' 7"	6' 6"	10,905	2,095	12,995	2,090	87	87*	50	4
319MLOK	36' 7"	8' 1"	12' 11"	8' 7"	6' 6"	11,170	2,023	12,995	1,825	87	87*	87*	3-4
321RSTS	36' 2"	8' 1"	12' 9"	8' 7"	6' 6"	10,580	1,995	12,700	2,120	87	87*	50	4-6
335RDOK	37' 7"	8' 1"	12' 11"	8' 7"	6' 6"	10,900	2,070	12,995	2,095	87	87*	50	4-6
355MBQS	42' 0"	8' 1"	12' 11"	8' 7"	6' 6"	13,250	2,080	14,995	1,745	87	87*	87*	7-9

Meet your Jayco Dealer



Scan QR code for specification definitions

Some specs at the time of print may include estimates. For the most updated information, please visit Jayco.com/eagle-fifth-wheels

Jayco, Inc. | P.O. Box 460 | Middlebury, IN 46540

See dealer for further information and prices. All information in this brochure and on www.jayco.com is the latest available at the time of publication approval. Jayco reserves the right to make changes and to discontinue models without notice or obligation. Photography may show optional equipment or props used for decoration purposes only. RVs built for sale in Canada may differ to conform to Canadian codes. JAYCO and the JAYCO BIRD IN FLIGHT are registered trademarks of Jayco, Inc. Printed in USA 11/21 ©2021 Jayco, Inc. 257086



Jayco - Part of the Jayco Family of Companies