



# Jay Feather



Serial #: 1UJBB0BN9T1JX0142  
 Model: 23RK JAY FEATHER TT

Model Year: 2026 Dealer Name: CAMPERLAND OF OKLAHOMA LLC  
 8347 EAST 11TH STREET  
 TULSA, OK 74112  
 USA

## Standard Equipment

## Optional Equipment

THE FOLLOWING ITEMS ARE STANDARD ON THIS MODEL

OPTIONAL EQUIPMENT INSTALLED ON THIS VEHICLE BY MANUFACTURER

### STANDARD EXTERIOR EQUIPMENT

- 1.5 in. fresh water drain valve
- 2 in. Stronghold VBL™ floor with 2 lb. density foam
- Aerodynamic, rounded front profile with aluminum framing
- American-made Norco Z-frame with integrated A-frame
- Battery quick-disconnect
- Dark-tinted safety-glass windows
- Exterior TV 120V recept and cable hook-ups
- Front diamond plating
- Galvanized steel and impact resistant wheel wells
- Magnum Truss™ Roof System
- Outdoor camp kitchen with galvanized steel bases (select models)
- PVC roofing membrane (limited lifetime warranty)
- Swing-out entry door assist handle
- Slide-topper prepped

### CUSTOMER VALUE PACKAGE (MANDATORY)

- Radial tires with self-adjusting electric brakes
- 13,500 BTU roof-mounted Quiet Series A/C
- Vacuum bonded sidewalls w/ interior & exterior Azdel
- 20 lb. LP gas bottles with auto-regulator, ABS cover, & fill gauge
- 55 gal. fresh water tank
- Automotive-style aluminum rims
- Black tank flush
- Detachable power cord
- Inverter pre-wire outlets
- Max-length power awning with LED light
- On-demand 60,000 BTU water heater
- Power tongue jack
- Rear 2 in. receiver prep
- Residential cabinetry w/ large doors and drawers
- Rock Solid Stabilizer System (N/A w/ Premier Pkg)
- Rear back-up camera prep
- Under-mount spare tire
- Hidden cabinet hinges
- Roller shades w/ radiant barrier backer
- Electric fireplace (N/A 21MML, 21MBH, 23RK)
- Slide-topper prep

### STANDARD INTERIOR EQUIPMENT

- 4 in. high-density dinette cushions with vinyl backing
- 4 in. soft-touch bunk mats (select models)
- 60 x 80 in. residential queen beds (60 x 76 in. in Murphy bed models)
- 75 lb. full extension drawer guides
- Decorative kitchen backsplash
- Bathroom skylight
- Directional and closeable A/C vents
- Gas-strutted under bed storage (most models)
- Handcrafted, hardwood door/drawer fronts
- Hidden-hinged cabinet doors
- High output auto-ignition LP gas furnace
- Interior speakers
- LED lighting throughout
- Plywood dinette, bed, bunk and shower/tub bases
- Powered roof vent in bathroom
- Seamless countertops throughout
- Residential vinyl flooring throughout
- Screwed and glued cabinet stiles
- USB charging ports (multiple locations throughout)

### JAY SPORT PACKAGE (MANDATORY)

- 11 cu. ft. 12V fridge
- App monitored TPMS (compatible w/ most Apple Car Play & Android Auto)
- Climate Shield (zero to 100 degree tested weather insulation package)
- Front slam-latch baggage doors
- Invision kitchen appliance package
- Solid fold-down step w/ aluminum tread on main entry door step
- LED smart TV
- Modem graphics package
- Porcelain foot-flush toilet
- Overlander 1 solar package: (1) 200W solar panel and 30-amp digital controller
- Stainless steel double basin kitchen sink
- Keyed Alike doors
- Rear exterior ladder
- Dark tinted privacy windows

Base price	44,468.00
USA STANDARDS	n/c
CUSTOMER VALUE PACKAGE	6,000.00
JAY SPORT PACKAGE	3,750.00
NO PREMIER PACKAGE	n/c
OVERLANDER I SOLAR PACKAGE	n/c
NO JAYCOMMAND CONTROL SYSTEM	n/c
15,000 BTU AC	300.00
NO 2ND AC	n/c
30 AMP SERVICE	n/c
NO DUAL MAXXAIR VENT FAN	n/c
20# LP GAS BOTTLES	n/c
NO FRONT CAP	n/c
TAMARACK TIRES	n/c
2" REAR RECEIVER	188.00
THEATER SEATING	n/c
QUEEN BED	n/c

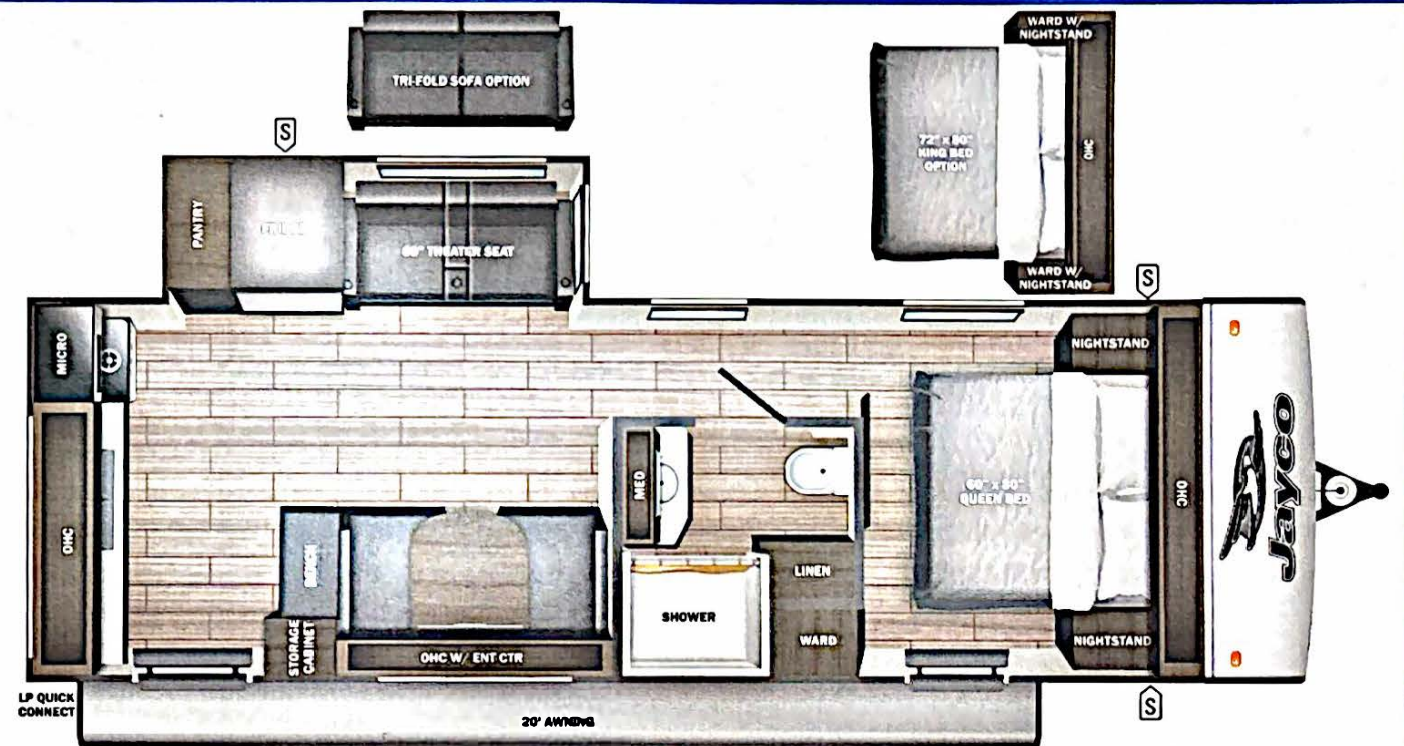
UNIT TOTAL **54,706.00**

DEALER INSTALLED OPTIONS

26-22825N

Manufacturer's Suggested Retail Price **\$54,706.00**

TOTAL AMOUNT DOES NOT INCLUDE STATE AND LOCAL TAXES OR LICENSE FEES. THE PRICE SHOWN ABOVE MAY OR MAY NOT BE REPRESENTATIVE OF THE ACTUAL SELLING PRICE OF SIMILAR RECREATIONAL VEHICLES IN YOUR AREA.



**UVW** 5885 lbs **Sleeps** **Length** 28' 7.06"

### DIMENSIONS

Exterior height:.....127.75"  
 Exterior width:.....95.50"

### WEIGHTS

GVWR:.....7400  
 GAWR (front):.....3500  
 GAWR (rear):.....3500  
 Approx. Gross Cargo Carrying Capacity(GCCC):.....1515

### TIRES

Tire size (front):.....ST205/75R14D  
 Tire size (mid):.....  
 Tire size (rear):.....ST205/75R14D  
 Tire size (spare):.....ST205/75R14D

### CAPACITIES

Fresh water tank (gals.):...55.00  
 Gray water tank (gals.):...61.00  
 Black water/toilet tank (gals.):.....30.50  
 Propane (lbs.):.....40  
 Propane (gals.):.....9  
 Water heater (gals.):.....0.25

### SEATING & SLEEPING

\*\*\*Some dimensions may be rounded and may vary from the actual dimensions\*\*\*  
 \*\*\*Weights may be estimated calculations and may vary from the actual weight - refer to the vehicle weight labels for actual weights\*\*\*  
 Floorplans, features and specifications are subject to change without notice.

