



# Jay Flight SLX

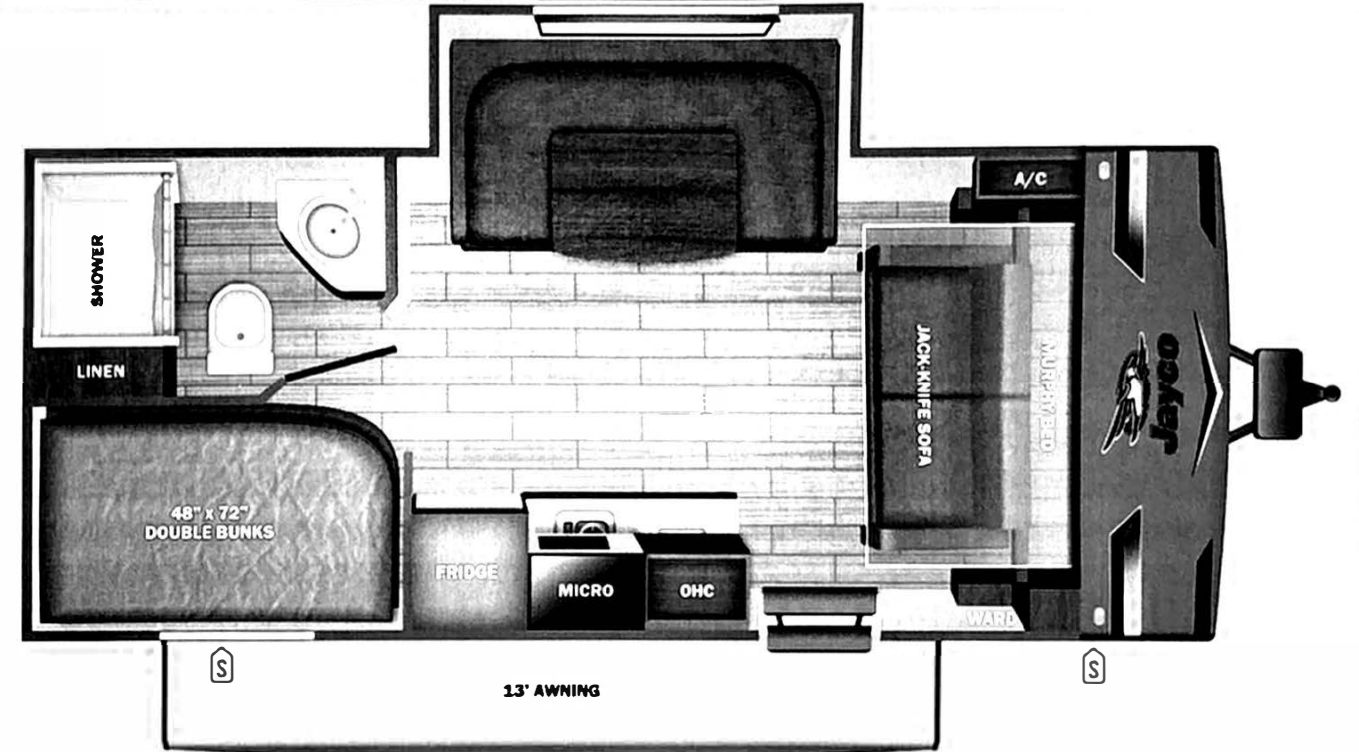


Serial #: 1UJBC0AK8T1YF0145  
 Model: 197MB JAY FLIGHT SLX TT

Model Year: 2026 Dealer Name: CAMPERLAND OF OKLAHOMA LLC  
 8347 EAST 11TH STREET  
 TULSA, OK 74112  
 USA

Manufacturer's Suggested Retail Price **\$32,311.00**

TOTAL AMOUNT DOES NOT INCLUDE STATE AND LOCAL TAXES OR LICENSE FEES. THE PRICE SHOWN ABOVE MAY OR MAY NOT BE REPRESENTATIVE OF THE ACTUAL SELLING PRICE OF SIMILAR RECREATIONAL VEHICLES IN YOUR AREA.



## Standard Equipment

THE FOLLOWING ITEMS ARE STANDARD ON THIS MODEL

### STANDARD EXTERIOR EQUIPMENT

- 30-amp service
- 8,000 BTU wall mount A/C (single axle models)
- 13,500 BTU Roof A/C (double axle models)
- Axles with electric, self-adjusting brakes and easy-lube hubs
- Exterior cable TV hookup
- Fully-integrated A-frame
- Galvanized-steel, impact resistant wheel wells
- Large exterior downspouts
- LP quick connect (outside gnl prep) [N/A on Sport Edition]
- Magnum Truss™ Roof System
- Nitrogen filled radial tires
- PVC roofing membrane (limited lifetime warranty)

### CUSTOMER VALUE PACKAGE (MANDATORY)

- 8 cu. ft. 12V refrigerator
- Backup camera prep
- Bathroom skylight
- Bathroom vent
- Detachable power cord
- Entry door with window and shade prep
- Fitted bed sheet
- G20 dark tinted privacy windows
- Keyed-Alike™ entry and baggage doors
- Large folding entry door grab handle
- LED interior and exterior light
- Microwave oven
- On-demand tankless water heater
- Power awning with LED lights
- Range hood
- MoFryde Step Above® entry steps
- Spare tire with cover
- Stabilizer jacks
- Tub/shower surround
- Window shades

### STANDARD INTERIOR EQUIPMENT

- 300 lb. rated single bunk beds
- 600 lb. rated double bunk beds
- Digital TV antenna
- Heavy-duty, 75 lb., full-extension, steel ball-bearing drawer guides
- High rise kitchen faucet
- Marine-grade toilet with foot flush
- Plywood bed platforms
- Queen mattress
- Residential-style hidden cabinet door hinges
- Residential-style kitchen countertops
- Shower curtain with curved shower track (select models)
- Solid hardwood cabinet doors with screwed stile construction and hidden hinges
- Vinyl flooring throughout

## Optional Equipment

OPTIONAL EQUIPMENT INSTALLED ON THIS VEHICLE BY MANUFACTURER

|                            |           |
|----------------------------|-----------|
| Base price                 | 26,468.00 |
| USA STANDARDS              | n/c       |
| CUSTOMER VALUE PACKAGE     | 5,250.00  |
| 13,500 BTU ROOF MOUNTED AC | 593.00    |
| METAL SIDEWALL             | n/c       |
| BLACK SPOKE RIMS           | n/c       |

UNIT TOTAL **32,311.00**

DEALER INSTALLED OPTIONS

**UVW** 4055 lbs **Sleeps** **Length** 23' 7"

### DIMENSIONS

Exterior height:.....114.75"

Exterior width:.....96.00"

### WEIGHTS

GVWR:.....4995

GAWR (front):.....4400

GAWR (rear):.....0

Approx. Gross Cargo Carrying Capacity(GCCC):.....940

### TIRES

Tire size (front):.....ST225/75R15E

Tire size (mid):.....

Tire size (rear):.....

Tire size (spare):.....ST225/75R15E

### CAPACITIES

Fresh water tank (gals.):...30.00

Gray water tank (gals.):...39.00

Black water/toilet tank (gals.):...39.00

Propane (lbs.):...20

Propane (gals.):...4

Water heater (gals.):...0.25

### SEATING & SLEEPING

\*\*\*Some dimensions may be rounded and may vary from the actual dimensions\*\*\*

\*\*\*Weights may be estimated calculations and may vary from the actual weight

- refer to the vehicle weight labels for actual weights\*\*\*

Floorplans, features and specifications are subject to change without notice.



26-22799N