



Jay Flight



Serial #: 1UJBC0BP7P1740210  
Model: 263RBS JAY FLIGHT TT

Model Year: 2023 Dealer Name: CAMPERLAND OF OKLAHOMA-SAPULPA  
9889 STATE HWY 66  
SAPULPA, OK 74066  
USA

Standard Equipment

Optional Equipment

THE FOLLOWING ITEMS ARE STANDARD ON THIS MODEL  
AT NO EXTRA CHARGE

OPTIONAL EQUIPMENT INSTALLED ON THIS VEHICLE  
BY MANUFACTURER

- EXTERIOR
- 20 lb. LP Bottles with Cover (2)
  - Enclosed underbelly
  - Axles with electric, self-adjusting brakes and easy-lube hubs
  - I-Class™ cambered structural steel I-beams
  - Fully integrated A-frame
  - 5/8 in. tongue-and-groove plywood floor decking
  - Magnum Truss™ Roof system with plywood decking
  - Seamless one piece roof material
  - Large exterior downspouts
  - Galvanized steel, impact-resistant wheel wells
  - 30-amp service
  - Front diamond plate
  - (4) Stabilizer jacks
  - Exterior TV mount and bracket
  - LED exterior lighting
  - Friction hinge entry door with shade-prep window
  - G20 dark tinted safety-glass privacy windows
  - LP quick connect (outside gas grill prep)
  - Detachable power cord
  - Backup & side marker camera prep
- CUSTOMER VALUE PACKAGE (mandatory)
- Black tank flush
  - Roof mounted solar prep
  - Large main entry door grab handle
  - Solid Step® entry steps (N/A 380DQS)
  - Tankless water heater
  - Cable/satellite TV hookup
  - Digital TV antenna
  - Goodyear® Endurance® tires (made in the USA)
  - Outside shower
  - Power tongue jack
  - Spare tire with cover
  - Water heater bypass
  - Power awning with LED lights
  - Marine grade exterior speakers
  - Keyed-Alike™ entry and baggage doors
  - Bathroom power vent
  - Bathroom skylight
  - Tub surround
- INTERIOR
- 81 in. ceiling height
  - 7 cu. ft. gas/electric refrigerator
  - Shower/tub surround
  - Solid hardwood cabinet doors
  - LED interior lighting
  - J-Steel™ jackknife sofa with armrest & cup holders (most models)
  - Vinyl flooring throughout (including slide floors)
  - Window shades
  - Smoked-glass cabinet door inserts (select models)
  - Residential-style kitchen countertops
  - 3-burner range with glass cover
  - Oven with glass door and interior light
  - Heavy-duty, 75 lb., full-extension, steel ball-bearing drawer guides
  - Range hood
  - USB charging station
  - Queen mattress
  - Plywood bed platforms
  - Main bed struts
  - 300 lb. rated bunk beds (select models)
  - 600 lb. rated bunk beds (double bunks)
  - Privacy curtains in bunk areas (select models)
  - Vented bunk windows (select models)
  - 4 in. thick bunk mats (select models)
  - Wooden bedroom doors (select models)
  - Shower curtain with curved shower track (select models)

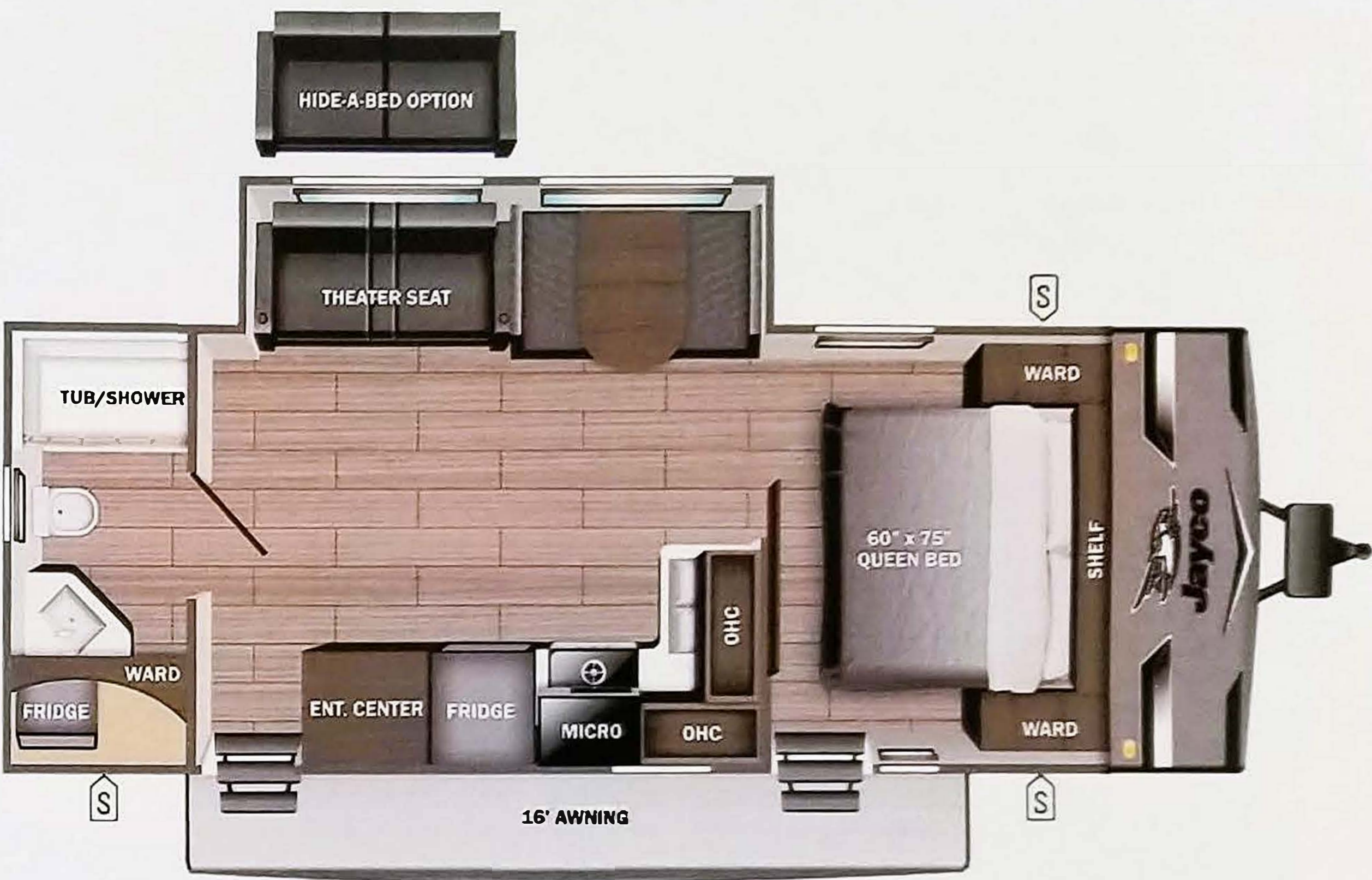
- Base price
- 40,493.00
- Modern Farmhouse
- n/c
- USA Standards
- n/c
- Customer Value Package
- 3,300.00
- 15,000 BTU AC
- 188.00
- 8 Cu. Ft. 12V Refrigerator
- 293.00
- Metal Sidewall
- n/c
- Silver Spoke Rims
- n/c
- 20# LP Gas Bottles
- n/c
- Roof Ladder
- 188.00
- Theater Seating Sofa
- n/c

UNIT TOTAL 44,462.00

DEALER INSTALLED OPTIONS

Manufacturer's Suggested Retail Price \$44,462.00

TOTAL AMOUNT DOES NOT INCLUDE STATE AND LOCAL TAXES OR LICENSE FEES. THE PRICE SHOWN ABOVE MAY OR MAY NOT BE REPRESENTATIVE OF THE ACTUAL SELLING PRICE OF SIMILAR RECREATIONAL VEHICLES IN YOUR AREA.



lb

UVW

6192 lbs

Sleeps

Length

30' 0.75"

- DIMENSIONS
- Exterior height:.....132.00"
- Exterior width:.....96.00"
- WEIGHTS
- GVWR:.....7500
- GAWR (front):.....3500
- GAWR (rear):.....3500
- Approx. Gross Cargo Carrying Capacity(GCCC) :.....1308
- TIRES
- Tire size (front):.....ST205/75R14D
- Tire size (mid):.....
- Tire size (rear):.....ST205/75R14D
- Tire size (spare):.....ST205/75R14D
- CAPACITIES
- Fresh water tank (gals.):...38.00
- Gray water tank (gals.):...78.00
- Black water/toilet tank (gals):.....39.00
- Propane (lbs.):.....40
- Propane (gals.):.....9
- Water heater (gals.):.....0.00
- SEATING & SLEEPING

\*\*\*Some dimensions may be rounded and may vary from the acutal dimensions\*\*\*  
\*\*\*Weights may be estimated calculations and may vary from the actual weight  
- refer to the vehicle weight labels for actual weights\*\*\*  
Floorplans, features and specifications are subject to change without notice.

