



## White Hawk



Serial #: 1UJBK0BT5P14S0061  
Model: 32RL WHITE HAWK TT

Model Year: 2023 Dealer Name: CAMPERLAND OF OKLAHOMA LLC  
8347 EAST 11TH STREET  
TULSA, OK 74112  
USA

### Standard Equipment

### Optional Equipment

THE FOLLOWING ITEMS ARE STANDARD ON THIS MODEL AT NO EXTRA CHARGE

OPTIONAL EQUIPMENT INSTALLED ON THIS VEHICLE BY MANUFACTURER

**EXTERIOR**

- Aerodynamic, rounded front profile with front diamond plate
- StrongPoint VBL™ vacuum bonded, laminated side and rear walls (including slide-out room walls)
- Azdel laminated interior and exterior walls
- MightyM™ Truss™ Roof System with one-piece, abrasion-resistant roof material with 20-year warranty
- 5/8 in. tongue-and-groove plywood decked flooring
- American-made I-Beam frame with integrated A-frame
- G20 dark tinted, frameless safety-glass windows
- 30 in. latching hinged main entry doors (select models)
- Swing-out grab handle
- Exterior TV bracket with 120V and cable outlets
- Outdoor camp kitchen with embossed metal countertop (select models)
- Stain talcres on front pass-through storage doors (select models)
- Manne grade exterior speakers with blue LED accent lighting (2)
- Galvanized steel and impact-resistant wheel wells
- 30-amp service
- Rock Solid Stabilizer System
- Mounted camera bracket for pre-wired side and rear backup prep
- Keyed A-Link™ lock system
- Detachable power cord
- A-frame mounted solar prep
- Battery quick disconnect
- Block tank flush
- ABS propane bottle cover
- Automotive-style aluminum rims
- Storage tire with cover
- Inverter pre-wire
- JayPort system with outside guide (guide optional on 26FK, 29RL & 32RL)
- Clad Solid Steps™ fold-down aluminum tread steps on main entry door

**INTERIOR**

- Arched interior ceiling up to 81" interior height
- LED lighting throughout
- Electric fireplace
- Directional and closable central A/C vents
- Physwood™ laminate bunk and bed bases (applicable models)
- Physwood vinyl flooring with cord-locked resistance
- High output auto-ignition 35,000 BTU furnace with wall thermostat
- Front windshield with roller shade with radiant barrier backing
- Solid hardwood cabinets with screwed and glued cabinet slots
- Deep, split bowl, stainless steel sink with high-rise, pull-out faucet and dry rack/sink cover combo
- Decorative backsplash
- Ball bearing drawer glides with 75 lb. capacity
- Wood panel ridge inserts
- 60 in. x 80 in. queen bed (60 in. x 75 in. in Murphy bed models)
- Murphy bed design allowing pass-through exterior storage access (241HB & 25MBH)
- Fixed bunks with 120V outlet, 12V USB and cargo net (bunk models only)
- Jayco exclusive Teddy Bear™ "soft touch" bunk mats (bunk models only)
- Powered roof vents in bathroom and main bedroom
- Decorative roller shades with reflective backing

**CUSTOMER VALUE PACKAGE (MANDATORY)**

- American-made nitro-filled Goodyear® radial tires with soft-adjusting brakes (made in the USA)
- Tankless water heater
- 55 gal. fresh water tank
- 33 lb. propane bottles (2)
- Outside shower
- Power awning with LED light
- Power tongue jack
- Slide topper prep (excludes slide rooms with a fridge)
- 39" or 50" LED Smart TV
- 15,000 BTU A.C.
- AMFM Bluetooth® stereo with speakers
- 8 cu. ft. gas electric refrigerator
- Oven with 3 burner recessed cooktop
- Microwave
- Porcelain foot flush toilet
- Showers with solid enclosures
- Bathroom skylight

**LUXURY PACKAGE (MANDATORY)**

- Climate Shield™ zero-degree tested weather protection
- Fuzzy enclosed and heated underbelly (ducted)
- 35,000 BTU output furnace
- Double layer fiberglass batt insulation in ceiling and floor
- Double sided radiant barrier insulation (roof, floor, cap, and slide room floors)
- PEX plumbing
- Front molded fiberglass cap with automotive-style windshield and blue LED accent lighting
- Frameless windows
- Fold-down aluminum lead entry steps (main entry), aluminum lead entry steps (second entry - select models)
- Roof-mount solar prep
- Kitchen skylight with shade
- MAXAIR™ power roof vent (main living area)
- JAYCOMMAND® Smart TV system with TPMS (Tire Pressure Monitoring System)

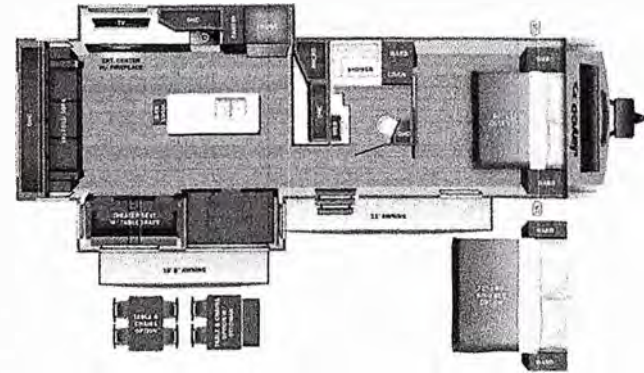
Base price	61,583.00
Modern Farmhouse	n/c
USA Standards	n/c
Customer Value Package	5,250.00
Luxury Package	3,000.00
Overlander Solar Package	743.00
2nd AC	893.00
50 AMP Service	353.00
Fireplace	443.00
10 Cu. Ft. 12v Refrigerator	293.00
Electric Stabilizer Jacks	638.00
Roof Ladder (Std)	n/c
Outside Griddle	443.00
Free Standing Table with 2 Chairs and Ottoman	473.00
Queen Bed	n/c

UNIT TOTAL **74,112.00**

DEALER INSTALLED OPTIONS

## Manufacturer's Suggested Retail Price \$74,112.00

TOTAL AMOUNT DOES NOT INCLUDE STATE AND LOCAL TAXES OR LICENSE FEES. THE PRICE SHOWN ABOVE MAY OR MAY NOT BE REPRESENTATIVE OF THE ACTUAL SELLING PRICE OF SIMILAR RECREATIONAL VEHICLES IN YOUR AREA.



**UVW**  
8111 lbs



**Sleeps**



**Length**  
36' 9.63"

#### DIMENSIONS

Exterior height: 134.50"  
Exterior width: 96.00"

#### WEIGHTS

GVWR: 9200  
GAWR (front): 4400  
GAWR (rear): 4400

Approx. Gross Cargo Carrying Capacity (GCCC): 1089

#### TIRES

Tire size (front): ST225/75R15E  
Tire size (mid): ST225/75R15E  
Tire size (rear): ST225/75R15E  
Tire size (spare): ST225/75R15E

#### CAPACITIES

Fresh water tank (gals.): 56.00  
Gray water tank (gals.): 71.00  
Black water toilet tank (gals.): 30.50  
Propane (lbs.): 60  
Propane (gals.): 14  
Water heater (gals.): 0.00

#### SEATING & SLEEPING

\*\*\*Some dimensions may be rounded and may vary from the actual dimensions\*\*\*

\*\*\*Weights may be estimated calculations and may vary from the actual weight - refer to the vehicle weight labels for actual weights\*\*\*

Floorplans, features and specifications are subject to change without notice.

**2+3**  
YEAR YEAR  
LIMITED WARRANTY

23-21670N