



# Jay Flight SLX



Serial #: 1UJBJSBP8N1780312  
 Model: 265TH JAYFLIGHT SLX TT

Model Year: 2022 Dealer Name: CAMPERLAND OF OKLAHOMA LLC  
 8347 EAST 11TH STREET  
 TULSA, OK 74112  
 USA

## Standard Equipment

## Optional Equipment

THE FOLLOWING ITEMS ARE STANDARD ON THIS MODEL AT NO EXTRA CHARGE

OPTIONAL EQUIPMENT INSTALLED ON THIS VEHICLE BY MANUFACTURER

- EXTERIOR**
- Axles with electric, self-adjusting brakes and easy lube hubs
  - Galvanized-steel, impact-resistant wheel wells
  - I-Class™ cambered structural steel I-beams
  - Fully-integrated A-frame
  - 5/8 in. tongue-and-groove plywood floor decking
  - Magnum Truss™ Roof System with plywood decking
  - Seamless roof material with 20 year warranty
  - Large exterior downspouts
  - 13,500 BTU roof-mounted A/C
  - 30 amp service
  - Rooftop solar prep
  - 20 lb. propane bottles (2) with cover
  - Spare tire with cover
  - Camp kitchen (select models)
  - Backup & side marker camera prep
  - Exterior TV mount & bracket
  - LED exterior lighting
  - Friction hinge entry door with window
  - Q20 dark tinted safety-glass privacy windows
  - Detachable power cord
  - LP quick connect (outside grill prep)

- INTERIOR**
- 81 in. ceiling height
  - Solid hardwood cabinet doors
  - LED interior lighting
  - J-Step™ jack-knife sofa with armrest
  - Vinyl flooring throughout (including slide floors)
  - Premium multimedia sound system with MP3/iPod input jacks and Bluetooth® connectivity
  - Digital TV antenna
  - Cable/satellite TV hookup
  - Smoked-glass cabinet door inserts (select models)
  - Residential-style kitchen countertops
  - Heavy duty, 75lb., full-extension, steel ball-bearing drawer guides
  - Plywood teed platforms
  - Bidirect doors in place of curtains (select models)
  - Queen bed struts
  - Queen mattress
  - Bedroom LED accent lighting
  - 300 lb. rated bunk beds (select models)
  - 600 lb. rated bunk beds (tumble bunks only)
  - Privacy curtains in bunk areas (select models)
  - 4 in. thick bunk mats (select models)
  - Marine-grade toilet with foot flush
  - Tub surround
  - Bathroom exhaust vent
  - Shower curtain with curved shower track (select models)
  - Wood-trimmed mirror in bathroom

- CUSTOMER VALUE PACKAGE (MANDATORY)**
- Goodyear® Endurance® tires (made in the USA)
  - Front diamond plate
  - 6 gal. gas/electric DSI water heater
  - Spare tire with cover
  - Outside shower
  - Power awning with LED lights
  - Marine grade exterior speakers
  - Stabilizer jacks (4)
  - Water heater bypass
  - Keyed, Akura™ entry and baggage doors
  - JaySMART™ (Safety Markers And Reverse Travel)
  - LED lighting (patent-pending)
  - Large folding entry door grab handle
  - Power tongue jack
  - Black tank flush
  - Window shades
  - 3 burner range with glass cover
  - 6 cu. ft. gas/electric refrigerator with temperature controls
  - Oven with glass door and interior light
  - Microwave oven
  - Range hood
  - Fitted bed sheet
  - Bathroom skylight

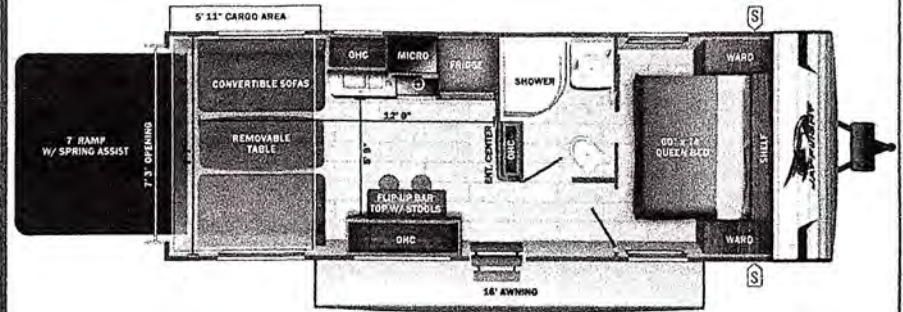
Base price	33,473.00
Classic Cottage	n/c
USA Standards	n/c
Customer Value Package	3,300.00
Solar Power Package	360.00
15,000 BTU A/C	150.00
8 Cu. Ft. 12V Refrigerator	293.00
Enclosed Underbelly	225.00
Silver Spoke Rims	n/c
Morryde Step Above Steps	143.00
20# LP Gas Bottles	n/c
Outside Griddle	338.00
Ramp Patio	1,493.00

UNIT TOTAL 39,775.00

DEALER INSTALLED OPTIONS

## Manufacturer's Suggested Retail Price \$39,775.00

TOTAL AMOUNT DOES NOT INCLUDE STATE AND LOCAL TAXES OR LICENSE FEES. THE PRICE SHOWN ABOVE MAY OR MAY NOT BE REPRESENTATIVE OF THE ACTUAL SELLING PRICE OF SIMILAR RECREATIONAL VEHICLES IN YOUR AREA.



**UVW**  
5296 lbs

**Sleeps**  
3

**Length**  
30' 5.5"

### DIMENSIONS

Exterior height:	127.00"
Exterior width:	96.00"
<b>WEIGHTS</b>	
GAWR:	7500
GAWR (front):	3500
GAWR (rear):	3500
Approx. Gross Carrying Capacity (GCCC):	2204

### CAPACITIES

Freshwater tank (gals.):	42.00
Gray water tank (gals.):	39.00
Black water toilet tank (gals.):	39.00
Propane (lbs.):	40
Propane (gals.):	9
Water heater (gals.):	6.00

### SEATING & SLEEPING

### TIRES

Tire size (front):	ST205/75R14D
Tire size (mid):	
Tire size (rear):	ST205/75R14D
Tire size (spare):	ST205/75R14D

\*\*\*Some dimensions may be rounded and may vary from the actual dimensions\*\*\*  
 \*\*\*Weights may be estimated calculations and may vary from the actual weight\*\*\*  
 - refer to the vehicle weight labels for actual weights\*\*\*  
 Floorplans, features and specifications are subject to change without notice.



22-21393 N