

Jayco | 2024 North Point Fifth Wheel

# NORTH POINT

TOP OF THE LINE LUXURY



# INTERIOR DESIGN



## MODERN FARMHOUSE



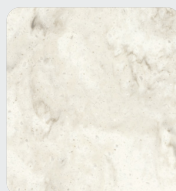
Main Wood



Accent Wood



Floor



Countertop



Main Fabric



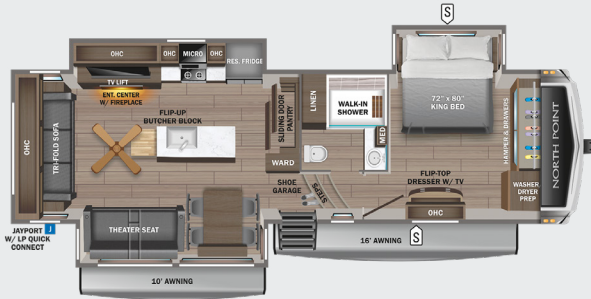
Accent Fabric



# NORTH POINT

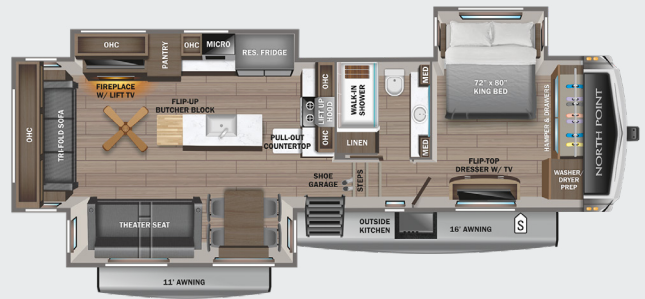
310RLTS

OPTIONS: A, B



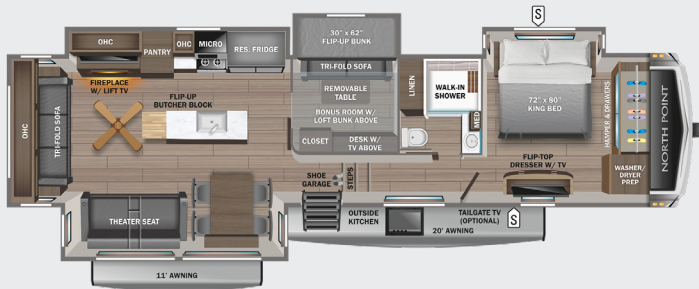
340CKTS

OPTIONS: A, B



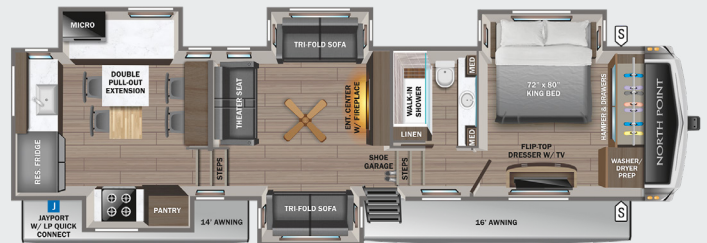
377RLBH

OPTIONS: A, B



380RKS

OPTIONS: A, B



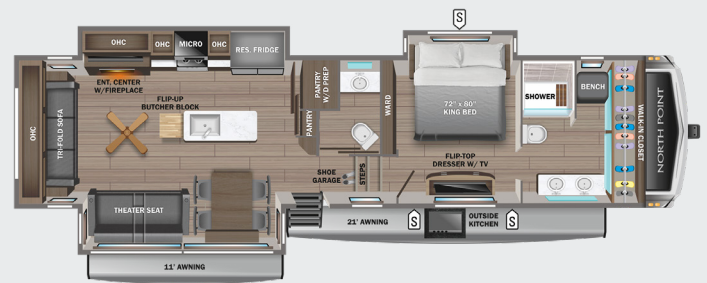
382FLRB

OPTIONS: A, B



387FBTS

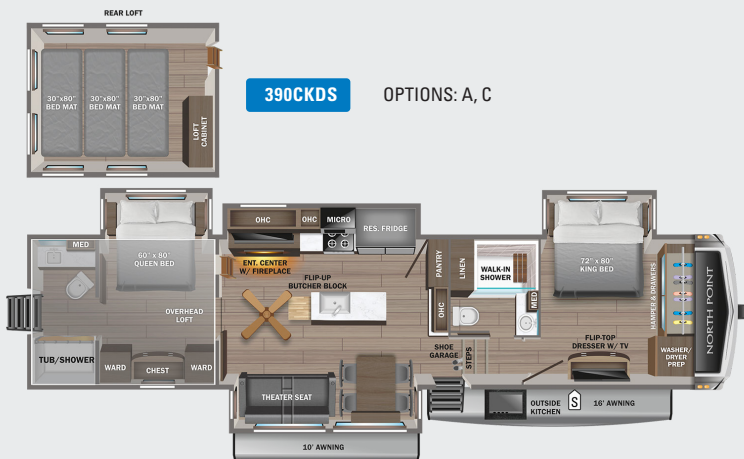
OPTIONS: A, B



## OPTIONS

390CKDS

OPTIONS: A, C



A



20 Cu. Ft. Fridge

B



Queen Bed

C



Super Sofa



STORAGE

MICRO

MICROWAVE

OHC

OVERHEAD CABINETS

FRIDGE

REFRIGERATOR

WARD

WARDROBE

# STANDARDS & OPTIONS

## EXTERIOR

(3) 40 lb. propane bottles with auto regulator (120 lb. max LP system)  
102 in. wide body construction  
12 in. structural steel I-beam with 10 in. steel drop frame  
3,000 lb. tow hitch with 4-way pin (N/A 390CKDS)  
Battery disconnect  
Built in sewer hose carrier  
Climate Shield™ zero-degree tested weather protection:  
40,000 BTU output furnace  
Double layer fiberglass batt insulation (roof and floor)  
Fully-enclosed and heated underbelly (ducted)  
PEX plumbing, 2 in. block foam and reflective foil  
Custom automotive-grade vinyl exterior graphics package  
Digital TV antenna with Wi-Fi extender  
Exterior marine-grade speakers with Bluetooth® controller  
Frameless, dark tinted, safety-glass windows  
Fully enclosed, universal docking center:  
Black tank flush  
Independent satellite wiring  
Quick-connect outside shower  
Selectable water connections  
Whole coach cable hookups  
Winterization and sanitation  
Inverter pre-wire to select outlets  
JayPort system for outside griddle (all floorplans without a standard outside kitchen)  
JaySMART™ (Safety Markers And Reverse Travel) LED lighting (patented)  
LED exterior lighting package  
Magnum Truss™ XL6™ Roof System (strongest tested roof in the industry) with one-piece, seamless roof material with a lifetime warranty  
Painted fiberglass front cap with clear coat and built-in specialty LED lighting  
Pass-through storage with Slam-latch™ baggage doors  
Skirt metal enclosed drop frame  
Stronghold VBL™ aluminum framed and vacuum bond laminated gelcoated fiberglass exterior walls (including rear wall and slide room end walls)  
Under-mounted spare tire  
Water heater bypass

## INTERIOR

5/8 in. tongue-and-groove joined plywood floor decking  
Bathroom skylight  
Built-in laundry hamper in wardrobe (select models)  
C.P.A.P. night stands on either side of the bed  
Carbon monoxide and propane detector  
Ceiling fan (select models)  
Dual USB charging ports throughout  
Extra 120V power outlets in kitchen and slide rooms  
Flip-up countertop extension with 24 in. x 24 in. butcher block bar top (select models)  
Flip-up hidden storage in bedroom chest of drawers (select models)  
Flip-up tabletop storage next to tri-fold sofa (select models)  
Gas-strutted under-bed storage  
Handcrafted hardwood glazed doors and drawers  
JayVoice voice command system-controls lighting, A/C and furnace

LED accent lighting above slideouts  
LED backlit custom framed mirror and medicine cabinet  
LED interior lighting throughout  
Porcelain toilet with foot flush  
Pull-out spice rack above microwave (select models)  
Pull-out utility drawer under kitchen sink  
Residential quilted bedspread and pillow shams  
Residential-grade, pull-out kitchen faucet  
Residential walk-in shower with teak seat  
"Shoe garage" in hallway step (select models)  
Soft close, heavy-duty, 75 lb. full-extension, steel ball-bearing drawer guides  
Solid hardwood slide fascia  
Stainless steel kitchen sink  
Toe kick nightlights in bedroom and bathroom  
Tri-fold hide-a-bed sofa with residential sleep surface (select models)  
True interior design (Modern Farmhouse)  
Vessel bowl sink with high rise faucet in main bathroom  
Vinyl flooring (made in the USA) throughout (includes slideout floors)

## CUSTOMER VALUE PACKAGE (MANDATORY)

15,000 BTU "Whisper Quiet" A/C (main)  
15,000 BTU "Whisper Quiet" A/C (bedroom)  
16 gal. gas/electric DSI water heater  
50 in. 4K Smart LED HDTV with fully digital HDMI® output and two extra HDMI cables  
Backup, main entrance door and side observation security camera prep (includes a power switch in the bedroom to use the optional 7 in. monitor for security)  
Custom machined aluminum rims  
Electric patio awning with integrated LED lights  
Hidden hinges on cabinet doors  
JBL® home entertainment system with sound bar and subwoofer  
Keyed-Alike™ lock system (single key for all doors/locks)  
Tire pressure monitoring system  
MORryde Safe-T-Rail grab handle  
Residential king (72 in. x 80 in.) mattress with under-bed storage  
Roof-top and ground solar prep  
Wireless remote control system (includes Bluetooth® wireless controls) with dimmer switches

## 5-STAR HANDLING PACKAGE (MANDATORY)

17.5 in. 16 ply 'H' rated Uniroyal tires  
Dexter® Axles with ABS and Tow Assist - includes Nev-R-Adjust® brakes and E-Z Lube® hubs  
MORryde® CRE-3000™ rubberized suspension  
MORryde® rubber pin box  
Wet bolt fasteners, bronze bushings and 4,000 lb. leaf springs

## LUXURY PACKAGE (MANDATORY)

2nd electric patio awning with integrated LED lights  
32 in. 4K Smart bedroom TV  
6-point hydraulic auto-leveling system  
Cellular prep for 4G WiFi repeater and JAYCOMMAND® "Smart RV" system  
Central vacuum system with dust port

Frameless dark tinted safety-glass windows  
Free-standing (no pedestal) table with leaf and (2) free-standing and (2) folding chairs  
Fresh Water Drinking System (patented) (connects to ice maker)  
GE 21 cu. ft. residential refrigerator with 1800W inverter  
GE Profile Series 30 in. residential convection microwave with built in air fryer  
GE Profile Series residential 24 in. range (3.7 cu. ft. with 9100 BTU high output burner)  
High gloss gelcoated sidewalls  
JAYCOMMAND® "Smart RV" system  
LED fireplace with electric space heater  
MORryde® StepAbove™ entrance steps with strut assist (main entrance)  
Oversized multi-battery compartment (industry leading room for 4-6 batteries)  
Privacy roller shades  
Residential solid-surface kitchen countertop with bamboo sink cover and strainer  
Residential walk-in shower with shampoo/soap holder and teak seat  
Washer/dryer prep

## OPTIONS

20 cu. ft. 12V refrigerator  
39 in. 4K Smart TV in cargo area  
3rd 15,000 BTU ducted A/C  
5,500W Onan® Microquiet generator  
7K hydraulic disc brake package (ABS N/A with disc brakes)  
8K hydraulic disc brake package (ABS N/A with disc brakes)  
Customer Value Package: 15,000 BTU central air with heat pump  
Extreme Weather Package: 120V heated holding tank pads and 12V wrapped and heated fresh water line  
Frameless dual pane tinted safety-glass windows  
Generator prep  
MORryde independent suspension with 8K axles and disc brakes (ABS not available)  
Outside griddle for JayPort system (includes LP quick-connect) (310RLTS, 380RKGS)  
Overlander 2 Solar Package: 30-amp controller, 1800W inverter and (2) 200W solar panels  
Overlander 4 Solar Package: (4) 200W solar panels, (2) 100-amp/hour lithium heated batteries, 60-amp controller, 3000W inverter, DC/DC power converter, soft start power save main 15K A/C, soft start power save for bedroom 15K A/C, battery monitor, energy management system, roof pre-wire for additional solar panels, generator prep capable and heavy gauge steel battery enclosure  
Overlander EXT Solar Package: 3,000W inverter/charger with internal 50-amp transfer switch, energy management system, (6) solar panels with 200W each, (6) 100-amp/hour lithium heated batteries, 12V DC A/C in bedroom, DC to DC battery charger, 100-amp MPPT controller management, generator prep capable  
Queen residential foam top mattress  
Sani-Con® Turbo waste management system  
Slideout awning(s) (quantity varies by model)  
Truma on-demand hot water system  
Wireless backup/side view/front entry door observation kit with 7 in. monitor

The 5-Star Handling Package is a Jayco exclusive, a powerful blend of high-end American-made components that make pulling a luxury fifth wheel a breeze.



**DEXTER® AXLES WITH ABS & TOW ASSIST - INCLUDES NEV-R-ADJUST® BRAKES & E-Z LUBE® HUBS**

The Benchmark of the trailer industry!



**MORryde® PIN BOX**

Allows pin box to travel forward and backward as well as side-to-side, creating a smoother tow.



**DEXTER® HEAVY-DUTY 1/2" SHACKLES WITH WET BOLT FASTENERS AND BRONZE BUSHINGS**

Resists the wear-and-tear of towing.



**MORryde® RUBBERIZED SUSPENSION SYSTEM**

Better absorbs and isolates road shock.



**UNIROYAL® TIRES**

17.5 in. 'H' Rated

\*Indicates split tanks \*\* 2023 Specs Shown

FLOORPLAN	TOTAL EXTERIOR LENGTH	EXTERIOR WIDTH	EXTERIOR HEIGHT (WITH A/C)	INTERIOR HEIGHT (MAIN)	INTERIOR HEIGHT (UPPER DECK)	UNLOADED VEHICLE WEIGHT	DRY HITCH WEIGHT	GVWR	CARGO CARRYING CAPACITY	FRESH WATER CAPACITY (INCLUDING WATER HEATER)	GRAY WASTE WATER CAPACITY	BLACK WASTE WATER CAPACITY	SLEEPING CAPACITY
310RLTS	36' 0"	8' 6"	13' 3"	8' 6"	6' 7"	12,885	2,610	16,000	3,115	75	87*	50	4-6
340CKTS	37' 11"	8' 6"	13' 4"	8' 6"	6' 7"	13,645	2,490	16,225	2,580	75	87*	50	4-6
377RLBH	42' 11"	8' 6"	13' 5"	8' 6"	6' 8"	14,985	2,905	17,500	2,515	75	87*	50	7-9
**380RKGS	42' 3"	8' 6"	13' 5"	8' 5"	6' 6"	13,940	2,785	16,995	3,055	75	87*	50	4-6
382FLRB	43' 10"	8' 6"	13' 4"	8' 6"	6' 7"	15,135	2,975	17,600	2,465	75	82.5*	74*	4-6
387FBTS	42' 11"	8' 6"	13' 4"	8' 6"	6' 7"	14,525	2,785	17,350	2,825	75	87*	87*	2-4
390CKTS	43' 9"	8' 6"	13' 5"	8' 6"	6' 8"	15,835	2,950	19,350	2,525	75	137*	100*	5-7

Meet your Jayco Dealer



Scan QR code for specification definitions

Some specs at the time of print may include estimates. For the most updated information, please visit [Jayco.com](http://Jayco.com)

Jayco, Inc. | P.O. Box 460 | Middlebury, IN 46540

See dealer for further information and prices. All information in this brochure and on [www.jayco.com](http://www.jayco.com) is the latest available at the time of publication approval. Jayco reserves the right to make changes and to discontinue models without notice or obligation. Photography may show optional equipment or props used for decoration purposes only. RVs built for sale in Canada may differ to conform to Canadian codes. JAYCO and the JAYCO BIRD IN FLIGHT are registered trademarks of Jayco, Inc. Printed in USA 10/23 ©2023 Jayco, Inc.



Jayco - Part of Jayco Family of Companies