

# JAY FLIGHT SLX 8

## TRAVEL TRAILERS (INDIANA)



**212QB**

Ext. Lgth: **25' 8"** Weight: **4,240 lbs.** Hitch: **470 lbs.**



**224BH**

Ext. Lgth: **27' 1"** Weight: **4,480 lbs.** Hitch: **460 lbs.**



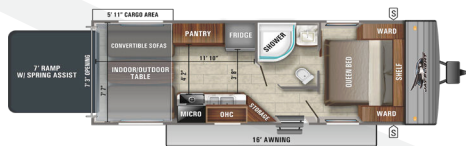
**237RBS**

Ext. Lgth: **26' 10"** Weight: **5,420 lbs.** Hitch: **615 lbs.**



**235RKS**

Ext. Lgth: **28' 1"** Weight: **5,510 lbs.** Hitch: **555 lbs.**



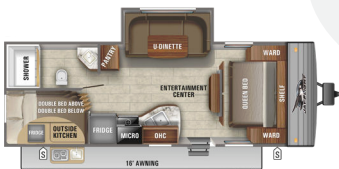
**236TH**

Ext. Lgth: **28' 4"** Weight: **4,890 lbs.** Hitch: **830 lbs.**



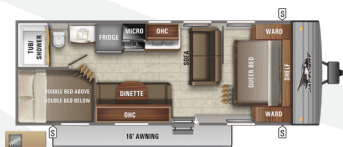
**245RLS**

Ext. Lgth: **28' 4"** Weight: **5,335 lbs.** Hitch: **595 lbs.**



**242BHS**

Ext. Lgth: **29' 4"** Weight: **5,555 lbs.** Hitch: **720 lbs.**



**264BH**

Ext. Lgth: **29' 5"** Weight: **4,690 lbs.** Hitch: **475 lbs.**



**265TH**

Ext. Lgth: **30' 4"** Weight: **5,060 lbs.** Hitch: **860 lbs.**



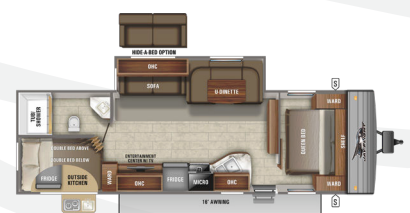
**267BHS**

Ext. Lgth: **30' 4"** Weight: **5,840 lbs.** Hitch: **695 lbs.**



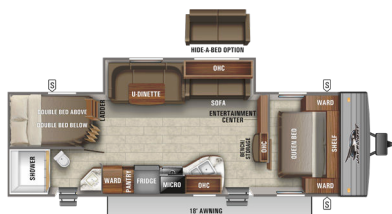
**265RLS**

Ext. Lgth: **31' 1"** Weight: **6,110 lbs.** Hitch: **710 lbs.**



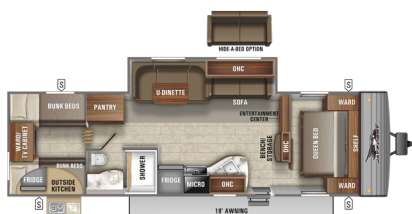
**284BHS**

Ext. Lgth: **33' 7"** Weight: **6,275 lbs.** Hitch: **750 lbs.**



**287BHS**

Ext. Lgth: **33' 7"** Weight: **6,210 lbs.** Hitch: **705 lbs.**



**294QBS**

Ext. Lgth: **35' 7"** Weight: **6,715 lbs.** Hitch: **830 lbs.**



**324BDS**

Ext. Lgth: **36' 2"** Weight: **7,760 lbs.** Hitch: **970 lbs.**

# STANDARDS & OPTIONS

## STANDARD EXTERIOR EQUIPMENT

Axles with electric, self-adjusting brakes and E-Z Lube® hubs  
Galvanized-steel, impact-resistant wheel wells  
I-Class™ cambered structural steel I-beams  
Fully-integrated A-frame  
5/8 in. tongue-and-groove plywood floor decking  
Magnum Truss™ Roof System with plywood decking and seamless DiFlex II material  
Large exterior downspouts  
2-sided reflective foil insulation in flush-floor slideout floors  
13,500-BTU roof-mounted A/C  
30-amp service  
Rooftop solar prep  
20 lb. propane bottles (2) with cover  
Spare tire with cover  
Pull-out camp kitchen (select models)  
Backup camera prep  
Exterior TV bracket  
LED exterior lighting  
G20 dark tinted safety-glass privacy windows

## STANDARD INTERIOR EQUIPMENT

81 in. ceiling height  
Solid hardwood cabinet doors  
LED interior lighting  
Wardrobe/pantry storage  
J-Steel™ jackknife sofa  
Vinyl flooring  
Residential-grade carpet (select models)  
Premium multimedia sound system with MP3/iPod input jacks and Bluetooth® connectivity  
Digital TV antenna

Cable/satellite TV hookup  
Smoked-glass cabinet door inserts (select models)  
Seamless solid-surface look kitchen countertops  
Large 50/50 acrylic kitchen sink  
Brushed nickel faucets  
Heavy-duty, 75lb., full-extension, steel ball-bearing drawer guides  
Residential-height plywood bed platforms  
Bedroom doors in place of curtains (select models)  
Queen bed struts  
Queen Serta® mattress  
Bedroom LED accent lighting  
300 lb. rated bunk beds (select models)  
600 lb. rated bunk beds (double bunks only)  
Privacy curtains in bunk areas (select models)  
4 in. thick bunk mats (select models)  
Marine-grade toilet with foot flush  
Tub surround  
Bathroom exhaust vent  
Shower curtain with curved shower track (select models)  
Wood-trimmed mirror in bathroom

JaySMART™ (Safety Markers And Reverse Travel)  
LED lighting (patent-pending)  
Large folding entry door grab handle  
Power tongue jack  
Black tank flush  
Pleated window shades  
3-burner range with glass cover  
6 cu. ft. stainless steel refrigerator with temperature controls  
Oven with glass door and interior light  
Stainless steel microwave oven  
Range hood  
Bedspread  
Bathroom skylight

## OPTIONS

15,000-BTU, roof-mounted A/C  
50-amp service with second A/C prep (284BHS, 287BHS, 294QBS, & 324BDS)  
Chil N' Stor (245RLS & 264BH)  
Enclosed underbelly  
MORryde® StepAbove™ entry steps  
Roof ladder  
Solar Power Package (100W roof solar panel & 30-amp digital controller)  
Ramp patio (236TH & 265TH)  
LED TV  
8 cu. ft. 12V stainless steel refrigerator

## CUSTOMER VALUE PACKAGE (MANDATORY)

Goodyear® Endurance® tires (made in the USA)  
Front diamond plate  
6 gal. gas/electric DSI water heater  
Spare tire with cover  
Outside shower  
Power awning with LED lights & speakers  
Stabilizer jacks (4)  
Water heater bypass  
Keyed-Alike™ entry and baggage doors

FLOORPLAN	EXTERIOR TRAVEL LENGTH	EXTERIOR WIDTH	EXTERIOR HEIGHT (WITH A/C)	INTERIOR HEIGHT	UNLOADED VEHICLE WEIGHT	DRY HITCH WEIGHT	GVWR	CARGO CARRYING CAPACITY	FRESH WATER CAPACITY (INCLUDING WATER HEATER)	GRAY WASTE WATER CAPACITY	BLACK WASTE WATER CAPACITY	SLEEPING CAPACITY
212QB	25' 8"	8' 0"	10' 5"	6' 8"	4,240	470	5,550	1,260	48	39	39	4-5
237RBS	26' 10"	8' 0"	11' 0"	6' 8"	5,420	615	6,500	1,080	46	39	39	2
224BH	27' 1"	8' 0"	10' 6"	6' 8"	4,480	460	5,600	1,120	48	39	39	7-8
235RKS	28' 1"	8' 0"	10' 11"	6' 8"	5,510	555	7,000	1,490	44	39	39	2
236TH	28' 4"	8' 0"	10' 5"	6' 8"	4,890	830	7,500	2,610	48	39	39	4
245RLS	28' 4"	8' 0"	11' 1"	6' 8"	5,335	595	7,000	1,662	46	39	39	4-5
242BHS	29' 4"	8' 0"	10' 10"	6' 8"	5,555	720	7,000	1,445	44	39	39	7-8
264BH	29' 5"	8' 0"	10' 6"	6' 8"	4,690	475	6,000	1,310	48	39	39	8-9
265TH	30' 4"	8' 0"	10' 6"	6' 8"	5,060	860	7,500	2,440	48	39	39	3-4
267BHS	30' 4"	8' 0"	11' 0"	6' 8"	5,840	695	7,000	1,160	44	39	39	8-10
265RLS	31' 1"	8' 0"	11' 0"	6' 8"	6,110	710	7,150	1,040	44	39	39	4-6
284BHS	33' 7"	8' 0"	11' 0"	6' 8"	6,275	750	7,500	1,225	44	39	39	8-10
287BHS	33' 7"	8' 0"	11' 0"	6' 8"	6,210	705	7,500	1,290	44	39	39	8-10
294QBS	35' 7"	8' 0"	11' 1"	6' 8"	6,715	830	8,250	1,535	44	39	39	8-10
324BDS	36' 2"	8' 0"	11' 2"	6' 8"	7,760	970	9,000	1,240	46	41	39	9-10

Some specs at the time of print may include estimates, for the most updated information, please visit [Jayco.com](http://Jayco.com)

\*\*Indicates split tanks



### TRAVEL WITH CONFIDENCE • NO ONE OFFERS A BETTER WARRANTY

At Jayco, we build our RVs to handle every adventure, then back them with our industry-leading 2+3 limited warranty. Our 2-year limited warranty has you covered for 2 camping seasons. That's 730 days. In addition, our 3-year structural limited warranty has you covered for 3 camping seasons or 1,095 days. You won't find a better limited warranty in the business, because the only strings that we attach are those that deliver the ultimate in reliability. That's the Jayco difference. So go explore. For a copy of our 2-year limited + 3-year limited structural warranty with complete terms and conditions, please contact your local Jayco dealer.



Scan QR code for specification definitions

