

TRAVEL TRAILER

JAY FEATHER



Jayco

Generations of family fun.

JAY FEATHER



2+3
YEAR YEAR
LIMITED STRUCTURAL
WARRANTY

JAY FEATHER HYBRID X23B



Goodyear® Tires (Made in USA)



Enclosed Underbelly



JAY FEATHER HYBRID FLOORPLANS

X17Z



X19H



LEGEND

- STORAGE
- MICROWAVE
- OHC OVERHEAD CABINETS
- FRIDGE REFRIGERATOR
- WARD WARDROBE

X23B



X23E



SPECS

FLOORPLAN	EXTERIOR TRAVEL LENGTH	EXTERIOR WIDTH	EXTERIOR HEIGHT (WITH A/C)	INTERIOR HEIGHT	UNLOADED VEHICLE WEIGHT	DRY HITCH WEIGHT	GVWR	CARGO CARRYING CAPACITY	FRESH WATER CAPACITY (INCLUDES WATER HEATER)	GRAY WASTE WATER CAPACITY	BLACK WASTE WATER CAPACITY	SLEEP CAPACITY
X17Z	18' 7"	8' 0"	10' 1"	6' 6"	3,285	375	3,950	665	22.5	30.5	22.5	6-7
X19H	20' 8"	8' 0"	10' 4"	6' 6"	3,800	340	4,950	1,150	42	30.5	22.5	6-7
X23B	24' 5"	8' 0"	10' 4"	6' 6"	4,380	485	5,500	1,120	42	30.5	22.5	6-7
X23E	26' 8"	8' 0"	10' 10"	6' 6"	5,120	600	6,150	1,030	42	30.5	22.5	8-9

Some specs at the time of print may include estimates. For the most accurate information, please visit Jayco.com.

Unloaded Vehicle Weight (UVW): Sometimes referred to as "Dry Weight," UVW means the typical weight of the trailer as built at the factory. The UVW, as used in product literature and other promotional materials, does not include cargo, fresh water, propane, options or dealer-installed accessories.

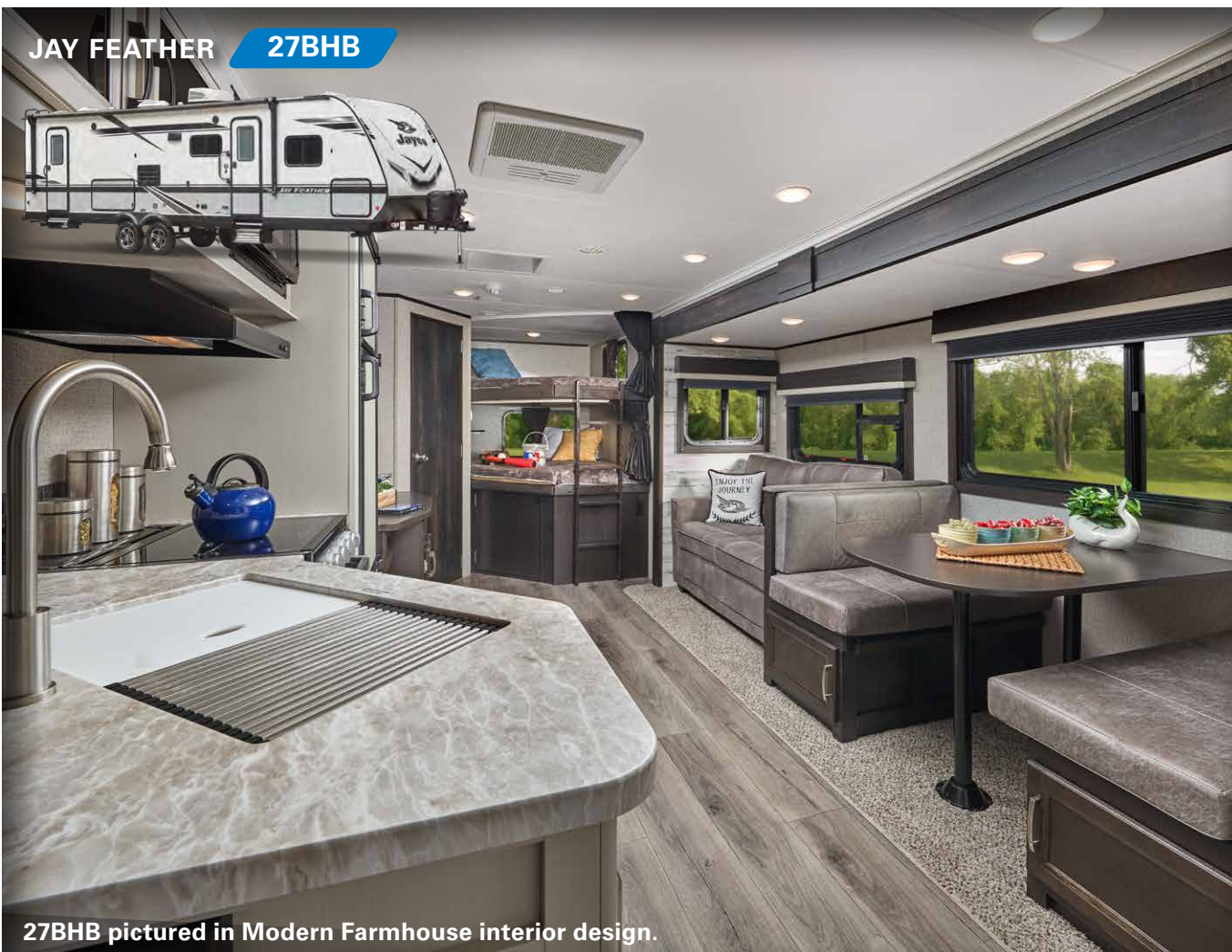
Gross Vehicle Weight Rating (GVWR): GVWR means the maximum permissible weight of the trailer, including the UVW plus personal items, all cargo, fluids, options and dealer-installed accessories. The GVWR is equal to or greater than the sum of the UVW and the CCC.

Cargo Carrying Capacity (CCC): CCC means the maximum weight of personal items, food, fresh water, propane, tools, other cargo and dealer-installed accessories that can be carried by the trailer. CCC is equal to or less than GVWR minus UVW. The addition of options will decrease the CCC.

Hitch Weight (HW): The hitch weight, as used in product literature and other promotional materials, does not include cargo, fresh water, propane gas, options or dealer-installed accessories. The addition of these types of items will either add to or subtract from the stated hitch weight.

It is important for your safety and enjoyment that your tow vehicle be adequately sized and equipped to tow and handle the GVWR of the RV you select. Review weights and rating of your tow vehicle and consult a competent advisor for questions or advice. Whether you are new to RVing or a veteran, get a feel for the performance of your tow vehicle before heading out on the roadways. When you tow an RV, you must drive differently than when you drive a single vehicle. Practice hooking up, driving, backing up and braking in a safe environment or seek out professional instruction. Jayco affixes a weight label to each RV which lists estimated weight information for that vehicle. See specifications chart above.

JAY FEATHER 27BHB

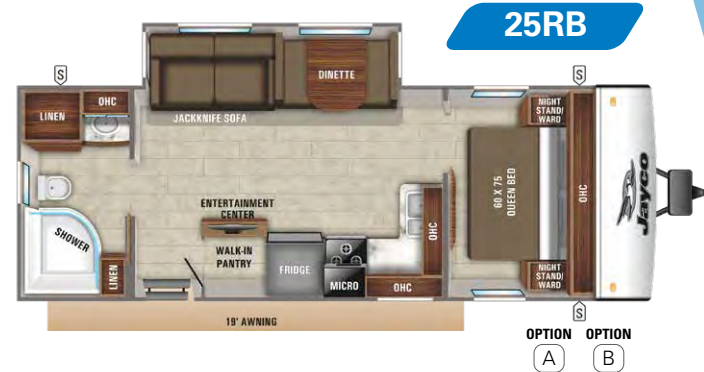
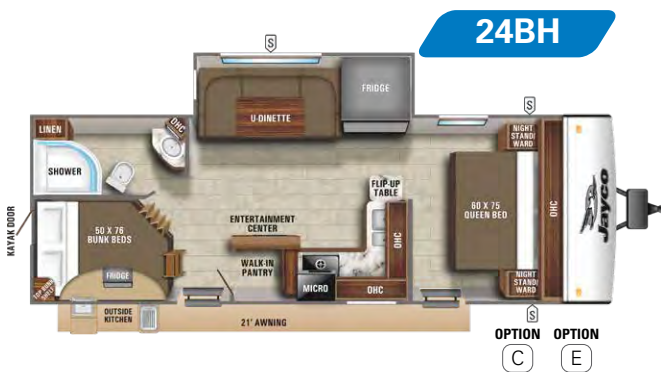
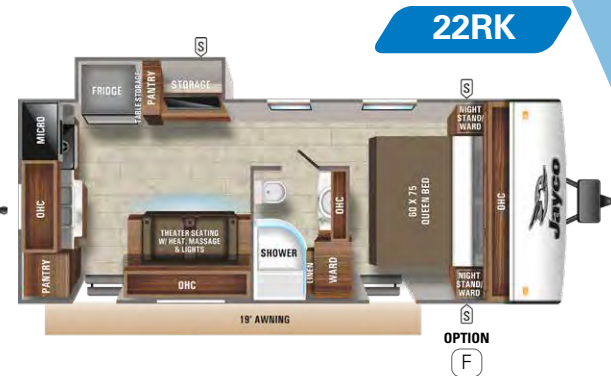
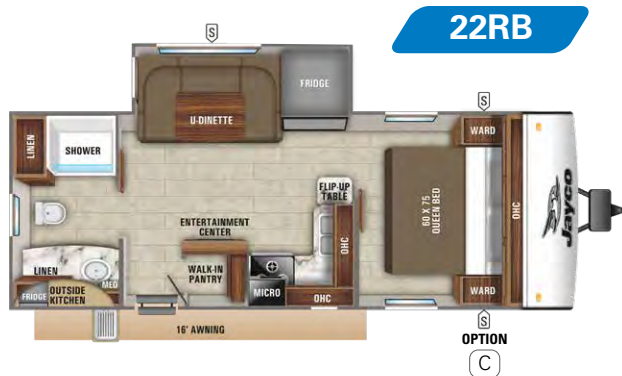
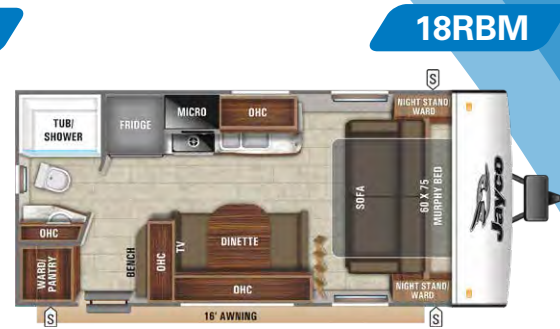
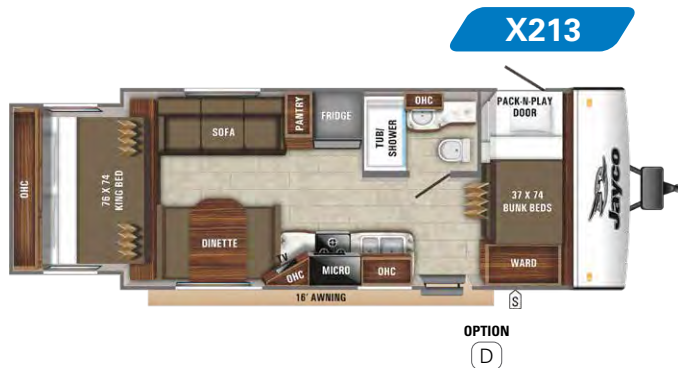


27BHB pictured in Modern Farmhouse interior design.



27RL pictured in Cashmere Cottage





OPTIONS



A



B



C



D



E

LEGEND

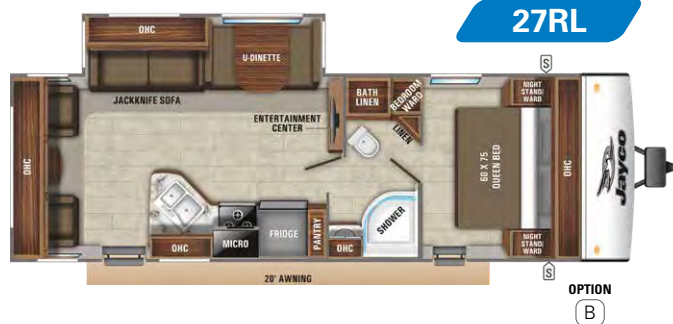
- STORAGE
- MICRO MICROWAVE
- OHC OVERHEAD CABINETS
- FRIDGE REFRIGERATOR
- WARD WARDROBE



27BHB



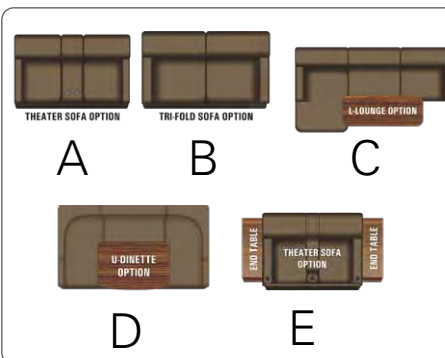
27RL



29QB



OPTIONS



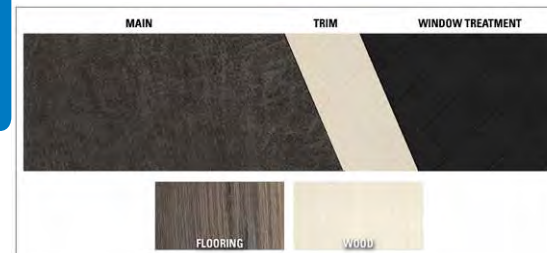
LEGEND

- STORAGE
- MICRO MICROWAVE
- OHC OVERHEAD CABINETS
- FRIDGE REFRIGERATOR
- WARD WARDROBE

INTERIOR OPTIONS



MODERN FARMHOUSE (HYBRID MODELS ONLY)



SPECS

FLOORPLAN	EXTERIOR TRAVEL LENGTH	EXTERIOR WIDTH	EXTERIOR HEIGHT (WITH A/C)	INTERIOR HEIGHT	UNLOADED VEHICLE WEIGHT	DRY HITCH WEIGHT	GVWR	CARGO CARRYING CAPACITY	FRESH WATER CAPACITY (INCLUDES WATER HEATER)	GRAY WASTE WATER CAPACITY	BLACK WASTE WATER CAPACITY	SLEEP CAPACITY
X213	24' 1"	8' 0"	9' 8"	6' 6"	4,545	450	5,500	955	42	30.5	22.5	6-9
16RK	22' 2"	8' 0"	10' 8"	6' 6"	4,753	341	5,500	747	42	30.5	30.5	2-3
18RBM	23' 8"	8' 0"	10' 3"	6' 6"	4,305	450	5,100	795	42	30.5	30.5	2-3
20BH	23' 9"	8' 0"	10' 5"	6' 6"	4,300	545	5,500	1,200	42	30.5	30.5	5-8
22RB	27' 7"	8' 0"	10' 8"	6' 6"	5,565	565	6,500	935	42	61*	30.5	2-3
22RK	27' 8"	8' 0"	TBD	6' 6"	TBD	TBD	TBD	TBD	42	61*	30.5	2-3
24BH	TBD	TBD	TBD	TBD	TBD	TBD	TBD	TBD	TBD	TBD	TBD	TBD
24RL	28' 5"	8' 0"	10' 9"	6' 6"	5,340	625	6,500	1,160	42	30.5	30.5	3-4
25RB	30' 5"	8' 0"	10' 9"	6' 6"	5,785	660	7,000	1,215	42	61*	30.5	4-6
27BHB	32' 11"	8' 0"	10' 8"	6' 6"	6,400	735	7,600	1,200	42	61*	30.5	8-9
27RL	31' 6"	8' 0"	10' 9"	6' 6"	5,870	745	7,000	1,130	42	30.5	30.5	4-6
29QB	34' 11"	8' 0"	10' 11"	6' 6"	6,765	745	7,950	1,185	42	61*	30.5	7-12

Some specs at the time of print may include estimates. For the most accurate information, please visit Jayco.com

*Split tanks

Unloaded Vehicle Weight (UVW): Sometimes referred to as "Dry Weight," UVW means the typical weight of the trailer as built at the factory. The UVW, as used in product literature and other promotional materials, does not include cargo, fresh water, propane, options or dealer-installed accessories.

Gross Vehicle Weight Rating (GVWR): GVWR means the maximum permissible weight of the trailer, including the UVW plus personal items, all cargo, fluids, options and dealer-installed accessories. The GVWR is equal to or greater than the sum of the UVW and the CCC.

Cargo Carrying Capacity (CCC): CCC means the maximum weight of personal items, food, fresh water, propane, tools, other cargo and dealer-installed accessories that can be carried by the trailer. CCC is equal to or less than GVWR minus UVW. The addition of options will decrease the CCC.

Hitch Weight (HW): The hitch weight, as used in product literature and other promotional materials, does not include cargo, fresh water, propane gas, options or dealer-installed accessories. The addition of these types of items will either add to or subtract from the stated hitch weight.

It is important for your safety and enjoyment that your tow vehicle be adequately sized and equipped to tow and handle the GVWR of the RV you select. Review weights and rating of your tow vehicle and consult a competent advisor for questions or advice. Whether you are new to RVing or a veteran, get a feel for the performance of your tow vehicle before heading out on the roadways. When you tow an RV, you must drive differently than when you drive a single vehicle. Practice hooking up, driving, backing up and braking in a safe environment or seek out professional instruction. Jayco affixes a weight label to each RV which lists estimated weight information for that vehicle. See specifications chart above.

JAY FEATHER / HYBRID STANDARDS & OPTIONS

STANDARD EXTERIOR EQUIPMENT

	Jay Feather Hybrid	Jay Feather TT
Aerodynamic, rounded front profile with diamond plate	S	S
Modern retro graphics package with two-colored sidewall	S	S
Stronghold VBL™ vacuum-bonded, laminated floor, side, rear and slide room walls		S
Stronghold VBL™ vacuum-bonded, laminated floor, side, rear and front walls	S	
Vacuum-bonded, laminated bed platforms with reverse-cambered support (1,100 lb. capacity) (all hybrids)	S	
Keyed Alike™ lock system on tent latches (all hybrids)	S	S
Magnum Truss™ Roof System with one-piece seamless DiFlex II material	S	S
American-made Norco® frame with integrated A-frame	S	S
Single axle (X17Z only)	S	
Dual axles (N/A X17Z)	S	S
G20 tinted safety glass windows	S	S
Marine-grade exterior speakers (2)	S	S
American-made Dexter® EZ Lube® axles	S	S
Galvanized steel and impact-resistant wheel wells	S	S
Slideouts with double seals, barrier sponges and U-channel drip spout (select models)	S	S
30 amp service	S	S
Outside grill propane quick-connect port	S	S
Water-repellent, scratch resistant Jayco DuraTek™ vinyl tent material with zipper windows (all hybrids)	S	
Permanently attached tent-to-bed base design (all hybrids)	S	
Rear camera backup prep (select models)	S	S
Folding assist handle on main entry doors		S
Aluminum tread entry steps	S	S
Manual tongue jack	S	
Outside camp kitchen (STD on select models)		S
Battery quick disconnect		S

STANDARD INTERIOR EQUIPMENT

Screwed and glued cabinetry	S	S
Smoked glass decorative inserts (select overhead cabinets)	S	S
Ball-bearing drawer glides with 75 lb. capacity	S	S
LED lighting throughout	S	S
6 cu. ft. refrigerator (5 cu. ft. in X17Z)	S	S
Residential oven with 3 burner recessed cooktop	S	
Residential-style kitchen countertops	S	S
Residential-style vinyl flooring	S	S
Microwave	S	S
Plywood dinette, bunk and bed bases (applicable models)	S	S
Murphy bed design allowing pass-through exterior storage access (18MRB, 23BHM)		S

	Jay Feather Hybrid	Jay Feather TT
4 in. high-density dinette cushions with vinyl backing	S	S
Jayco exclusive mattress with bedspread (select models)		S
Jayco exclusive teddy bear "soft-touch" residential-style bed mats	S	S
110V outlet and corner shelf in fixed bunks		S
Plastic foot flush toilet in all models	S	S
Bath skylight and roof vent	S	S

CUSTOMER VALUE PACKAGE (MANDATORY)

American-made nitro-filled Goodyear® radial tires with self-adjusting brakes	CVP	CVP
Aluminum rims	CVP	CVP
20 lb. propane bottles with auto regulator (2)	CVP	CVP
13,500 BTU A/C	CVP	CVP
Spare tire with cover	CVP	CVP
Detachable power cord	CVP	CVP
Power awning with LED lights	CVP	CVP
Black tank flush	CVP	CVP
Outside shower	CVP	CVP
Exterior TV bracket with 110V electric and cable outlets		CVP
Power tongue with manual stabilizer jacks (4)		CVP
Manual stabilizer jacks (4)	CVP	
6 gal. gas/electric DSI water heater	CVP	CVP
AM/FM/CD/DVD/Bluetooth® stereo		CVP
AM/FM/Bluetooth® stereo	CVP	
Enclosed underbelly	CVP	CVP
Residential-style oven with 3-burner recessed cooktop		CVP
Rear camera backup prep		CVP

SPORT PACKAGE (MANDATORY)

24", 32" or 40" LED TV		SP
Aluminum tread entry steps		SP
Drying rack/ sink cover		SP
Enhanced graphics package		SP
Front molded fiberglass cap		SP
JaySMART™ backup lighting		SP
Roof ladder		SP

OPTIONS

Drying rack/ sink cover	0	
24 in. LED TV (select models)	0	
32 in. LED TV (select models)	0	
15,000 BTU roof-mounted A/C	0	0
Exterior grill	0	0

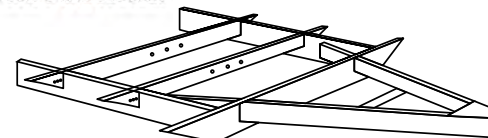
	Jay Feather Hybrid	Jay Feather TT
New JAYCOMMAND™ "Smart RV" system		0
Fan-Tastic Vent power roof vent (placement specific per model)	0	0
2-bike carrier rack (A-frame mounted)	0	0
Tri-fold sofa (24RL, 25RB, 27BHB, 27RL, 29QB)		0
Tri-fold sofa (X23E only)	0	
50 amp service (22RB, 24RL, 25RB, 27BHB, 27RL, 29QB)		0
2nd A/C (22RB, 24RL, 25RB, 27BHB, 27RL, 29QB)		0
Solar prep (roof mounted)	0	0
30 lb. propane bottles with auto regulator (2) (select models)		0
Power tongue jack	0	
Heated bunk mats (2 for X17Z, X19H, X23B; 3 for X23E)	0	
Fold-down aluminum entry step (STD 16RK, 22RB)		0
Theater seating with heat and massage (22RB, 24RL, 25RB, 27BHB, 29QB. STD- 16RK, 22RK)		0
U-dinette IPO theater seating (16RK)		0
L-lounger sofa IPO U-dinette (22RB)		0
Booth dinette IPO theater seating (22RK)		

S - Standard 0 - Optional

CVP - Customer Value Package SP - Sport Package



American-made Dexter Axles with Self-Adjusting Brakes and Galvanized Wheel Wells



American-made Norco Frame with Integrated A-Frame



50 percent Stronger

4,500 lbs. on a Jayco roof vs. other roofs



Jayco's roof **vs.** other roofs

2+3

YEAR | YEAR
LIMITED | STRUCTURAL
WARRANTY

Travel with Confidence

NO ONE OFFERS A BETTER WARRANTY

At Jayco, we build our RVs to handle every adventure, then back them with our **industry-leading 2+3 warranty**. Our 2-year limited warranty has you covered for 2 camping seasons. That's **730 days**. In addition, our 3-year structural warranty has you covered for **3 camping seasons or 1,095 days**. You won't find a better warranty in the business, because the only strings we attach are those that deliver the ultimate in reliability. That's the Jayco difference. So go explore. For a copy of our 2-year limited + 3-year structural warranty with complete terms and conditions, please contact your local Jayco dealer.

GOODYEAR



MADE IN USA

Featuring Durawall®
Technology - ENGINEERED
to help you tow with confidence



JAYCOMMAND™

The JAYCOMMAND™ system puts RVers in full control of their unit. The system was custom-built by our product development teams along with OneControl®, so that **owners can monitor and control key RV operations from a phone or a tablet**. (JAYCOMMAND™ is optional on the Jay Feather lineup).



Generations of family fun.

Jayco, Inc. | P.O. Box 460 | Middlebury, IN 46540 © **RVIA**

See dealer for further information and prices. All information in this brochure and on www.jayco.com is the latest available at the time of publication approval. Jayco reserves the right to make changes and to discontinue models without notice or obligation. Photography may show optional equipment or props used for decoration purposes only. RVs built for sale in Canada may differ to conform to Canadian codes. JAYCO and the JAYCO BIRD IN FLIGHT are registered trademarks of Jayco, Inc. Printed in USA 88K 10/19 ©2019 Jayco, Inc.

Meet your Jayco Dealer _____

Follow Jayco
#LetsJayco

