

1 9 9 5  
EAGLE  
TRAVEL  
TRAILERS  
& FIFTH  
WHEELS



WELCOME HOME



Eagle Series 260 FS Travel Trailer

## THE 1995 EAGLES: PRICED AND BUILT TO GO!

Eagle Series. Eagle SL. Both come equipped with everything you need for fabulous vacation getaways. They're ready to go when you are, too. Yet, for all they offer, both have remarkably friendly prices!

And wait till you see the choices! Eagle Series comes in more than twenty spacious models, starting at 25-feet in length. Eagle SL,

with its *under-25-foot* lengths and its strong but lightweight aluminum frame, is perfect for towing behind today's lighter, more fuel-efficient vehicles.

It's all part of the Jayco commitment; our family helping your family to a lifetime of good times. Features like these, standard in both the Eagle Series and the Eagle SL, make it possible:



Clockwise, from top: Blue, Teal, Earthtone, Rose

Eagle Series 260 FS Travel Trailer, Teal Decor





Eagle 207 SL Fifth Wheel

- A big selection of spacious, 8-foot-wide floor plans — there's an Eagle made just for you
- Optional Slide-out sections for many models — providing even more living space
- Jayco's huge SuperSlides — optional in some models; standard in others
- Custom-designed interiors, including color-coordinated window treatments with elegant boxed valances, pull-down shades, and draperies
- Elegant radius-cornered windows
- A Jayco-made J-steel convertible sofa that has comfy layered-foam cushioning and a hinged front for access to a storage area underneath
- A residential-grade carpet and pad in the living room and bedroom areas
- Abundant storage space, inside and out
- Cabinet doors with oak-grain panels and stylish hardware
- Drawer sides of real wood, not particle board
- A large-capacity, flush-mounted double-door

refrigerator (single-door in Eagle SL models)

- A high-output three-burner range with a 9000 BTU front burner and oversized built-in oven
- A systems monitor panel for checking the holding tanks, the fresh water tank, and the battery levels
- In-floor ducted heating — and since there are no ducts in cabinets, you've got more space freed up for storage
- An oak cutting board
- A porcelain double sink
- A power vent in the bathroom
- An easy-to-clean tub surround
- A large medicine cabinet with a mirrored door in most models
- A walk-around queen bed in most models; bed lifts up easily on piston supports to expose a large storage area underneath
- Large, accommodating wardrobe space
- An innerspring mattress and a quilted designer bedspread
- A convenient flip-up TV shelf in most bedrooms
- A crank-up TV antenna

(Continued on back cover)



Eagle Series 263 RK Fifth Wheel, Earthtone Decor, with Optional Solid-oak Cabinets and SuperSlide



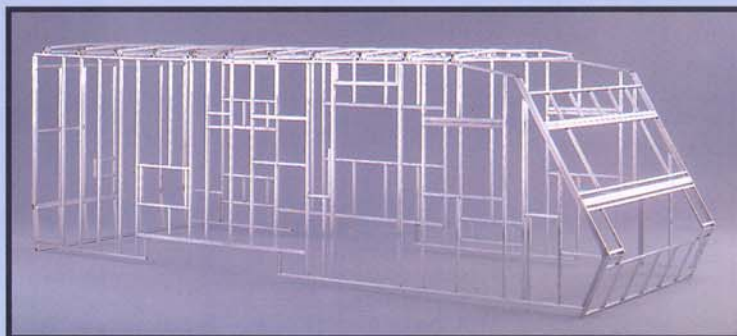
Bedroom, Eagle Series 260 FS Travel Trailer, Teal Decor, includes designer bedspread.



Full-width, 25-cubic-foot Front Storage Compartment on Eagle SL Travel Trailers (Dual LP Bottles Stowed in Side Compartment)

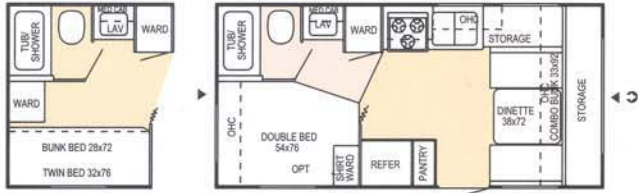
## EAGLE SL'S STATE-OF-THE-ART ALUMINUM FRAME CONSTRUCTION

If you own one of today's light pickups, mini vans, sport utility trucks, or new multi-purpose vehicles, take heart: Now you can enjoy the best of RV living — without having to invest in a bigger, heavier-duty tow vehicle. Eagle SL's aluminum frame helps make it possible. (1) Tubular aluminum framing throughout provides exceptional strength and lighter weight. (2) All frame joints are solidly welded. (3) The all-aluminum roof has a three-inch arch and aluminum trusses for added strength where it counts. (4) Sturdy aluminum framing completely surrounds doors and windows for greater structural integrity. Note that all Eagle Series models have Jayco's strong, dependable wood frame.

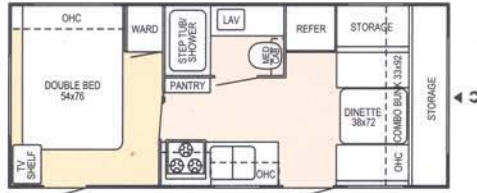


# EAGLE SL™ TRAVEL TRAILERS

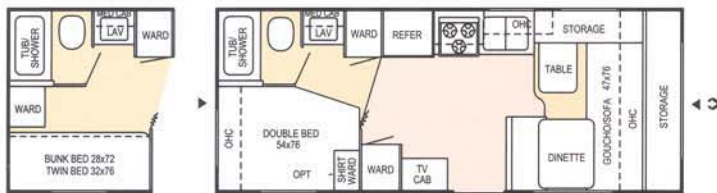
# EAGLE SERIES™ TRAVEL TRAILERS



**210 SL**

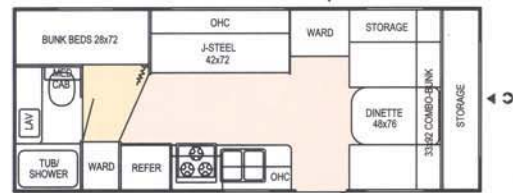


**230 SL**

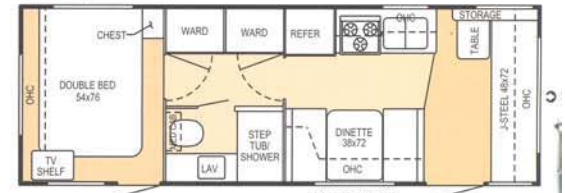


**240 SL**

Option A

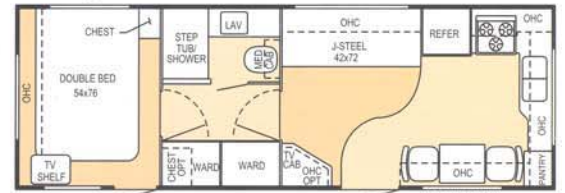


**244 SL**



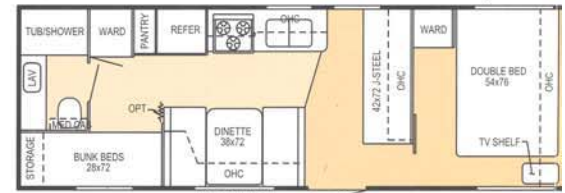
**260 FS**

Options A, B, H, J



**262 FK**

Options A, B, K



**264 BH**

Option H



**302 FK**

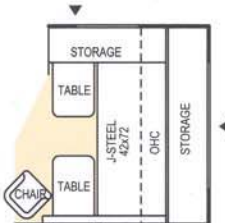
Options C, F



**304 BH**

Options E

## EAGLE SL OPTIONAL ARRANGEMENTS SEE CODES UNDER FLOOR PLANS



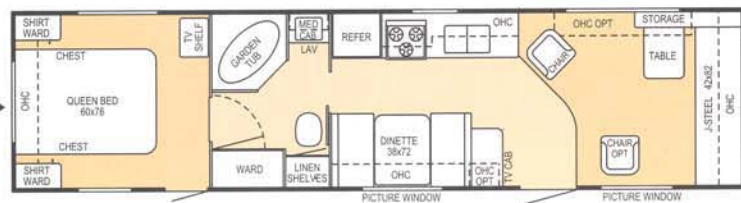
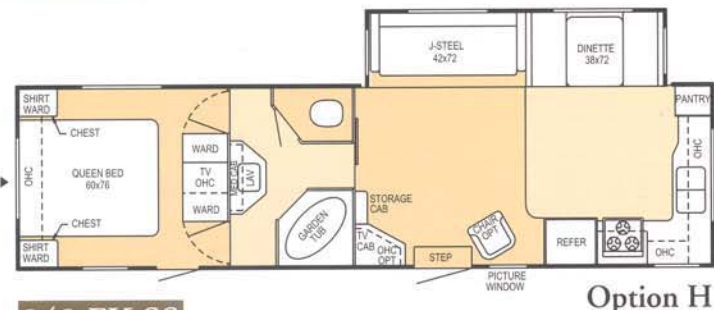
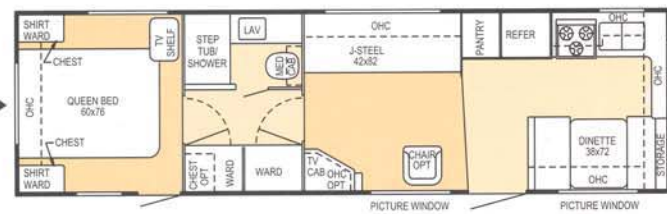
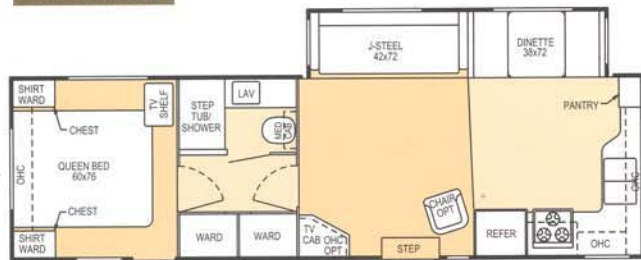
Option A

## KEY TO FLOOR PLAN CODES:

BH = Bunk House  
RB = Rear Bedroom  
FK = Front Kitchen  
FS = Front Sofa

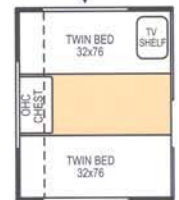
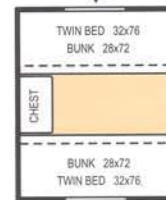
SS = SuperSlide  
▶ = Outside Storage Compartment  
↻ = Front

# AVEL TRAILERS

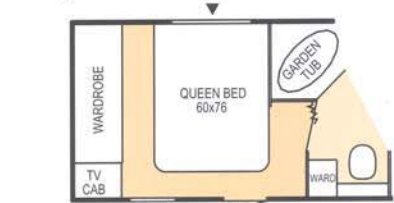
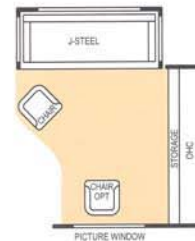
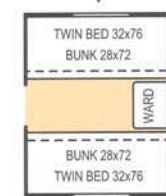


## EAGLE SERIES OPTIONAL ARRANGEMENTS

SEE CODES UNDER FLOOR PLANS



(LOCATION VARIES)



# EAGLE SL™ FIFTH WHEELS

# EAGLE SERIES™ FIFTH WHEELS



**207 SL**

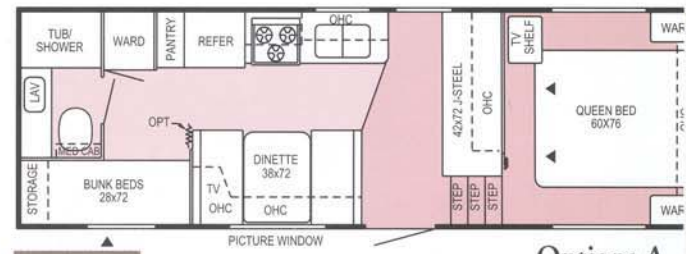


**253 RK**

Options B, C

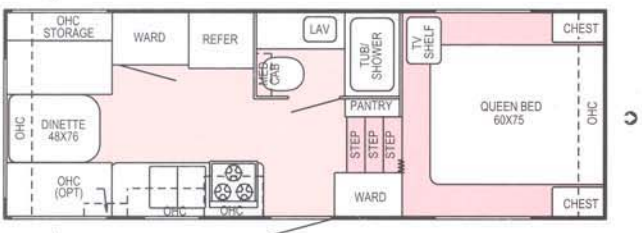


**211 SL**



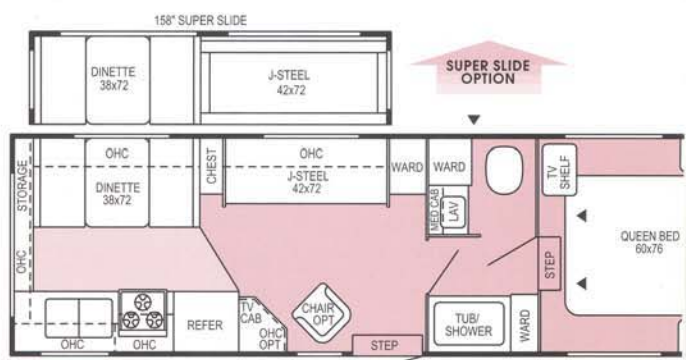
**255 BH**

Options A,



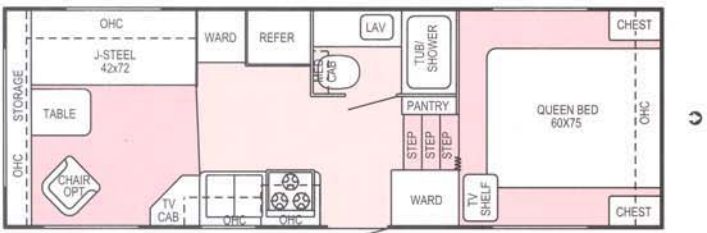
**219 SL**

Option A



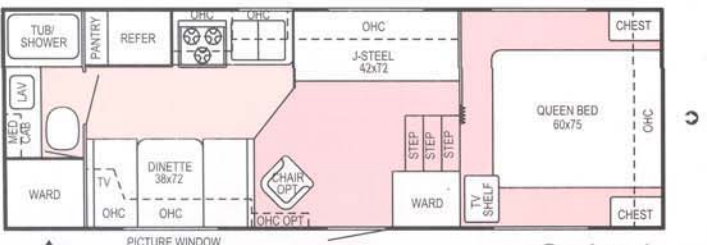
**263 RK**

Options



**241 SL**

Option A



**247 SL**

Option A

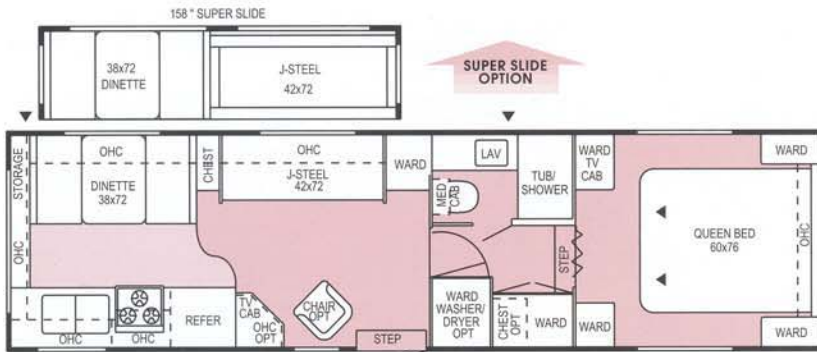
### EAGLE SL OPTIONAL ARRANGEMENTS

SEE CODES UNDER FLOOR PLANS

**Option A**



Options A, B



Options A, B, D



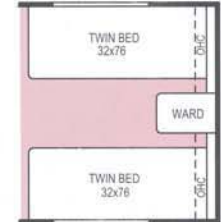
Options A, B



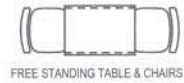
Options A, B

## EAGLE SERIES OPTIONAL ARRANGEMENTS

SEE CODES UNDER  
FLOOR PLANS



Option A



FREE STANDING TABLE & CHAIRS

Option B



Option C



Option D

### KEY TO FLOOR PLAN CODES:

BH = Bunk House  
 RB = Rear Bathroom  
 RK = Rear Kitchen  
 RLR = Rear Living Room

SS = SuperSlide

= SuperSlide Option

= Outside Storage Compartment

= Front

(Continued from Page 3 ...)

- A 30-inch-wide entrance door in most models — with an attractive white frame and a dead-bolt lock
- A double entrance step (triple step on models with SuperSlides)
- A 12-volt hitch light (not available on Eagle SL models)
- A 12-volt patio light
- A convenient 110-volt exterior outlet
- Radial tires
- A water-heater bypass that extends the life of the water heater
- A water-system winterization kit
- Jayco's superb construction throughout — famous for ensuring an RV that lasts longer, retains its good looks, and commands a high resale value
- A dependable 5/8-inch plywood floor with tongue-and-groove seams
- Expert finishing throughout — so everything fits tight, looks refined, and holds up longer

**OPTIONS**

These are but a few of the many fine options we offer in our Eagle Series™ and Eagle SL™ RVs. Ask your dealer about the others, too.

- Solid-oak cabinet doors and drawer fronts
- Central air conditioning with wall-thermostat control and ceiling ducts that resist condensation — available in models of 25 feet and larger
- A free-standing oak table with two chairs
- An 800-watt carousel microwave oven — powerful enough to pop popcorn
- A garden tub in some models
- A rubber roof (instead of the standard seamless aluminum roof) for a quieter interior

		<b>MODELS</b>											
		Exterior length	Exterior height	Interior headroom	Approx. dry axle weight with std. equip. (lbs.)	Approx. dry hitch weight (lbs.)	Gross Vehicle Weight Rating (lbs.)	Approx. weight opt. slide	Fresh water tank (gals.)	Gray water holding tank (gals.)	Toilet w/waste holding tank (gals.)	Sleeping capacity	
<b>TRAVEL TRAILERS</b>	<b>EAGLE SL</b>	210 SL	21'5"	108"	77"	3055	425	5700	N/A	36	25	25	6
		230 SL	23'8"	108"	77"	3215	550	5800	N/A	36	25	25	6
		240 SL	24'10"	108"	77"	3315	505	6200	N/A	36	25	25	6
		244 SL	24'11"	108"	77"	3455	515	6200	N/A	30	25	25	6
	<b>EAGLE SERIES</b>	260 FS	26'10"	109"	77"	4140	640	7500	N/A	36	29	36	4-6
		262 FK	27'11"	109"	77"	4190	665	7500	N/A	36	29	36	3-6
		264 BH	28'4"	109"	77"	4085	800	7500	N/A	36	31	31	4-6
		302 FK	30'6"	109"	77"	4235	845	7800	N/A	36	29	36	4-6
		304 BH	30'6"	109"	77"	4300	950	7800	N/A	36	31	31	4-6
		310 FSSS	30'11"	119"	77"	5770	925	9500	STD.	36	43	36	4-7
		312 FKSS	31'11"	119"	77"	5810	900	9500	STD.	36	58	36	4-6
		322 FK	32'10"	109"	77"	4425	860	9000	N/A	36	29	36	4-6
		342 FKSS	34'10"	119"	77"	6000	1150	9700	STD.	36	64	42	4-6
		350 FS	36'5"	110"	77"	4965	850	9400	450	46	29	36	4-6
376 FBSS	37'10"	119"	77"	6425	1040	10200	STD.	36	29	36	6-8		
<b>FIFTH WHEELS</b>	<b>EAGLE SL</b>	207 SL	22'1"	122"	44"	3115	730	6100	N/A	36	25	25	6
		211 SL	22'11"	122"	44"	3400	650	6400	N/A	36	25	25	6
		219 SL	22'9"	122"	44"	3405	865	6400	N/A	36	25	25	4
		241 SL	24'10"	122"	44"	3595	790	7000	N/A	36	25	25	4
		247 SL	24'11"	122"	44"	3695	730	7000	N/A	36	25	25	6
	<b>EAGLE SERIES</b>	253 RK	25'11"	122"	44"	3770	1040	7500	N/A	30	33	33	6
		255 BH	25'11"	122"	44"	3765	1050	7500	N/A	38	30	30	8
		263 RK	28'1"	132"	63"	4665	1115	9700	845	50	63	33	6
		277 RBSS	28'11"	131"	62"	5315	1520	10200	STD.	50	43	43	6
		303 RK	30'6"	134"	72"	5065	1425	10700	845	50	70	37	6
321 RLR	32'11"	134"	72"	5175	1565	10700	845	50	37	37	6		
343 RKSS	36'2"	134"	72"	6485	1485	11800	STD.	50	70	37	6		

N/A = Not Available

STD = Standard Feature

For Further Information and Prices, See:

On the cover: Eagle Series 263 RK Fifth Wheel, left, and Eagle 244 SL Travel Travel

**LIMITED WARRANTY**

Jayco recreation vehicles are warranted to the original owner for twelve (12) months from the date of purchase against defects in materials and workmanship. There are certain exclusions to this limited warranty, details of which are available at your Jayco dealership.

**PLEASE NOTE**

All information in this brochure is the latest available at the time of publication approval. Jayco reserves the right to make changes and to discontinue models without notice or obligation. Pictures in this brochure may show optional equipment. RVs built for sale in Canada may differ to conform to Canadian codes.

**Welcome Home**



**Jayco®**

Jayco, Inc.  
P.O. Box 460  
Middlebury, IN 46540



Printed Entirely on Recycled Paper