

1994 EAGLE SERIES™ TRAVEL TRAILERS & 5TH WHEELS

W E L C O M E H O M E

JAYCO.





WELCOME HOME ... to the plushest, most comfortable travel living you're ever likely to experience at a price this amazingly low!

After all, Jayco Eagle Series™ RVs truly *are* homes: thoughtfully appointed, tastefully styled living accommodations designed to take you and your family wherever you find the good life. On weekend getaways. Family vacations. Cross-country caravans. Or good old-fashioned fun times. You name it, the Eagle Series lets you enjoy it — with the kind of comforts you expect of home.

You don't have to add a lot of options to make it comfortable, either. The Eagle Series comes ready to go on a moment's notice. Sure, you can add options, if you like. But most everything you need for great vacation living is already included in its low base price.



Bedroom, Blue Decor, 265 RK Fifth Wheel

What makes it so affordable?

After more than a quarter-century in business, we think we've learned a few things about controlling costs. But we're just as determined to maintain traditional Jayco high quality. Just how high can be seen in the following features, many of which you'd be hard-pressed to find in RVs costing thousands of dollars more:



Oak Cabinet Doors & Drawer Fronts are Optional



Bathroom, 345 FK SS Travel Trailer



265 RK Fifth Wheel with SuperSlide, Blue Decor

- A big selection of spacious floor plans (models are a full eight feet wide!) — you're sure to find one that perfectly matches your budget; your way of life
- For even more living space, slideout sections — including Jayco's huge SuperSlides available in certain models
- Custom-designed interiors, including color-coordinated window treatments with elegant fabric valances and pull-down shades
- Radius-cornered windows
- A J-steel sofa that converts into a bed (in most models)
- A residential-grade carpet and pad in the living room and bedroom areas
- Abundant storage space, inside and out
- Deep, large-capacity overhead cabinets with oak-framed doors and stylish hardware
- Optional solid-oak cabinet doors and drawer fronts
- Drawer sides of real wood — poplar, not particle board
- Big, accommodating wardrobes with divided hanger bars
- A large-capacity, flush-mounted double-door refrigerator — standard in all models



- A high-output three-burner range with an oversized built-in oven
- A systems monitor panel for checking the holding tanks, the fresh water tank, and the battery levels
- In-floor ducted heating (in most models) for superior heat distribution — and since there are no ducts in cabinets, you've got more space freed up for storage

- Optional central air conditioning with wall-thermostat control and ceiling ducts that resist condensation (available in models of 25 feet and up)
- An oak cutting board
- A porcelain double sink
- A bathroom power vent
- An easy-to-clean tub surround (in most models)
- A large medicine cabinet with a mirrored door (in most models)
- Walk-around queen beds (in most models) that lift up easily on piston supports to expose a large storage area underneath
- Innerspring mattresses and quilted designer bedspreads
- A convenient TV shelf in the bedroom
- A crank-up TV antenna
- Dual 30-pound LP-gas tanks with an auto regulator (in all models except the 215 SD fifth wheel)
- A dead-bolt lock on the entrance door
- A 12-volt hitch light for fast, easy hookups or unhooking at night
- A 12-volt patio light
- A convenient 110-volt exterior outlet
- Radial tires
- A water heater bypass that extends the life of the water heater
- A dependable 5/8-inch plywood floor with tongue-and-groove seams



Kitchen, 345 FK SS Travel Trailer

EAGLE SERIES™ TRAVEL TRAILERS

220 CB



Options G, H

220 BH



Option D

250 FS



Options A, F

265 FK



Options A, B, L

300 FS



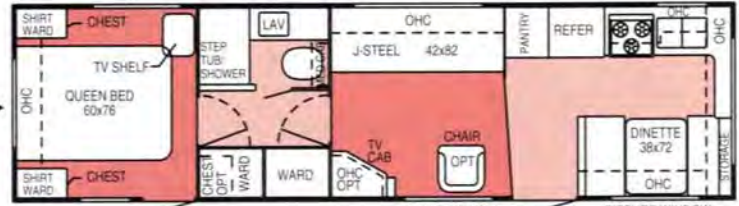
Options C, D, L

305 FK SS



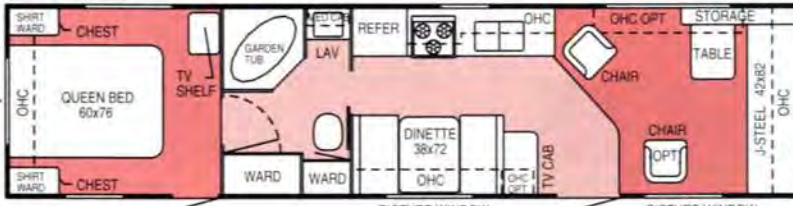
Options C, D, L

325 FK



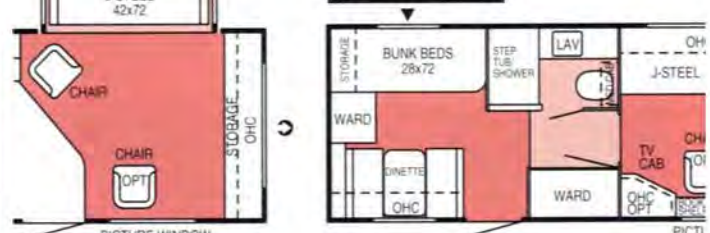
Options C, D, L

350 FS



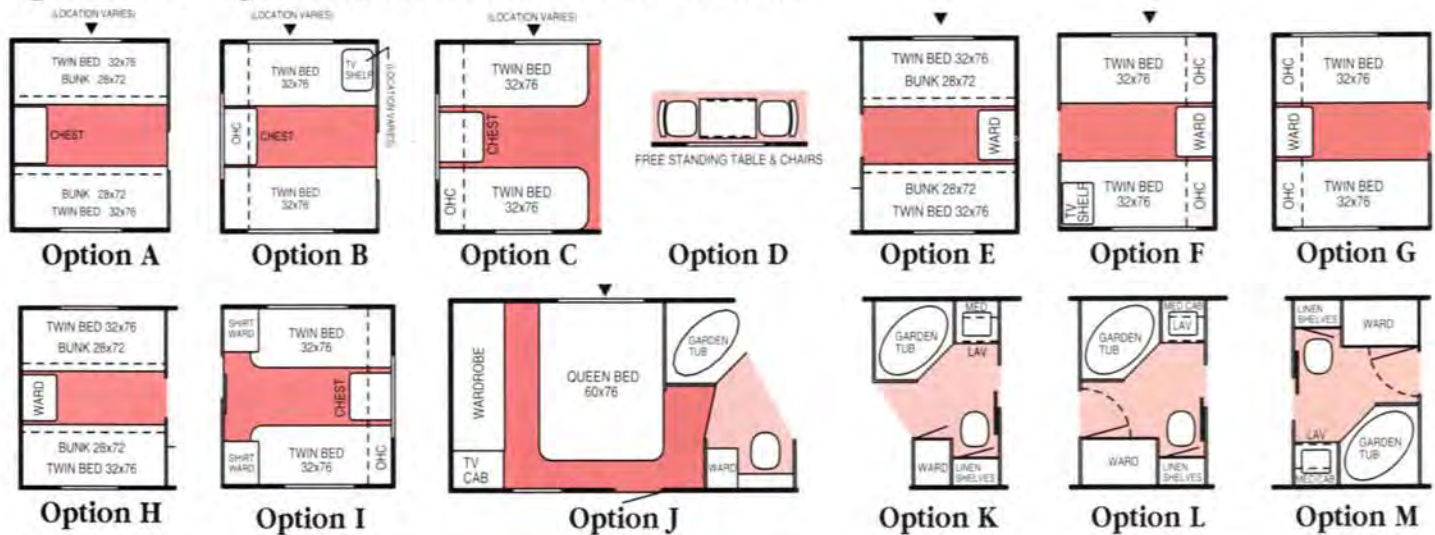
Options C, D, J

360 FB RD



PICL WIND

Optional Arrangements, See Codes Under Floor Plans

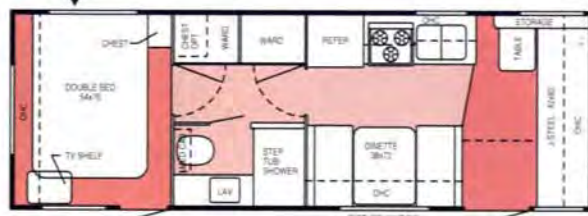


265 DB BH



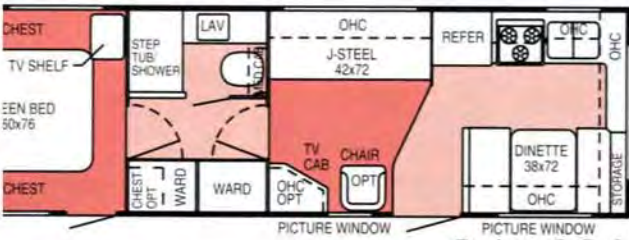
Option D

265 FS



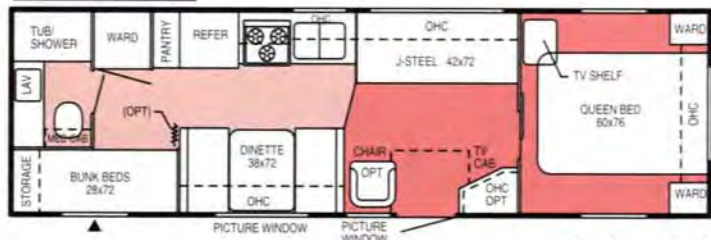
Options A, B, D, M

FK



Options C, D, L

300 DB BH



Options D, I

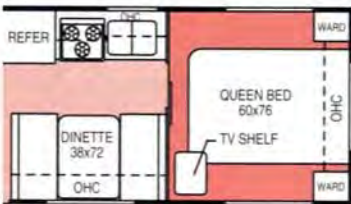
345 FK SS



Option D

KEY TO FLOOR PLAN CODES:

- ↻ = Front of Unit
- ▶ = Outside Storage Compartment
- BH = Bunk House
- CB = Center Bathroom
- DB = Double Bed
- FB = Front Bedroom
- FK = Front Kitchen
- FS = Front Sofa
- RD = Rear Dinette
- SS = SuperSlide



Options D, I, K

370 SS



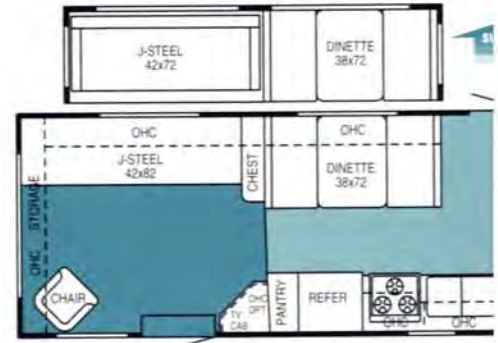
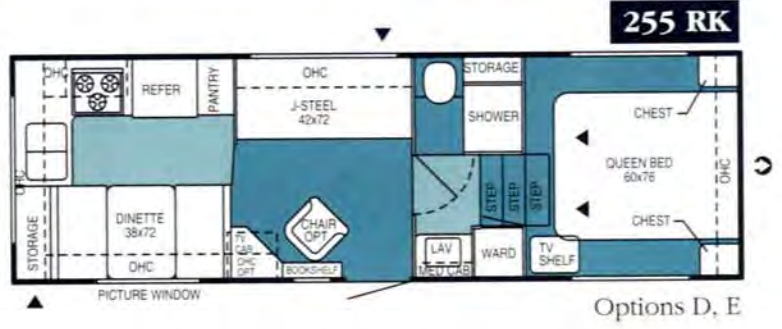
Options D, E, F

SPECIFICATIONS

Models	220 CB	220 BH	250 FS	265 DB BH	265 FS	265 FK	300 FS	300 FK	300 DB BH	305 FK SS	325 FK	345 FK SS	350 FS	360 FB RD	370 SS
Exterior length	21'8-1/2"	22'	25'3-1/2"	28'3-1/2"	26'10"	27'10-3/4"	30'5-1/2"	30'5-1/2"	30'5-1/2"	31'10-1/2"	32'9-1/2"	34'11"	36'4-1/2"	35'10-1/2"	37'8-3/4"
Exterior height	106"	106"	108"	108"	108"	108"	109"	109"	109"	117"	109"	117"	109"	110"	117"
Exterior width	98"	98"	98"	98"	98"	98"	98"	98"	98"	98"	98"	98"	98"	98"	98"
Interior headroom (living room)	77"	77"	77"	77"	77"	77"	77"	77"	77"	77"	77"	77"	77"	77"	77"
Approx. dry axle weight with std. equip. (lbs.)	3255	3200	3570	3895	4090	3865	3935	4055	4000	N/A*	4415	5895*	N/A*	5150	N/A*
Approx. dry hitch weight (lbs.)	550	455	460	750	500	655	795	740	800	N/A*	695	970*	N/A*	910	N/A*
Approx. gross vehicle weight rating (lbs.)	6055	5960	6060	7030	6865	6935	7075	7020	7040	N/A*	7275	9570*	N/A*	8510	N/A*
Ducted furnace with thermostat & auto. ignition (BTU output)	20M	20M	20M	25M	25M	25M	25M	25M	25M	31M	31M	31M	31M	31M	35M
Fresh water tank (approx. gals.)	36	36	36	36	36	36	36	36	36	36	36	36	46	36	36
Hot water heater (approx. gals.)	6	6	6	6	6	6	6	6	6	6	6	10	10	10	10
Gray water holding tank (approx. gals.)	22	30-1/2	29	30-1/2	29	29	29	29	30-1/2	58	29	64	29	29	29
Toilet with waste holding tank (approx. gals.)	30-1/2	30-1/2	36	30-1/2	36	36	36	36	30-1/2	36	36	42	36	36	36
Sleeping capacity	4-6	5-6	4-8	4-6	4-8	3-6	4-7	4-6	4-6	4-6	4-6	4-6	4-6	7-9	6-8

* These are new models. Some specifications were not available at time of printing. Please see your dealer for details.

EAGLE SERIES™ FIFTH WHEELS



KEY TO FLOOR PLAN CODES:

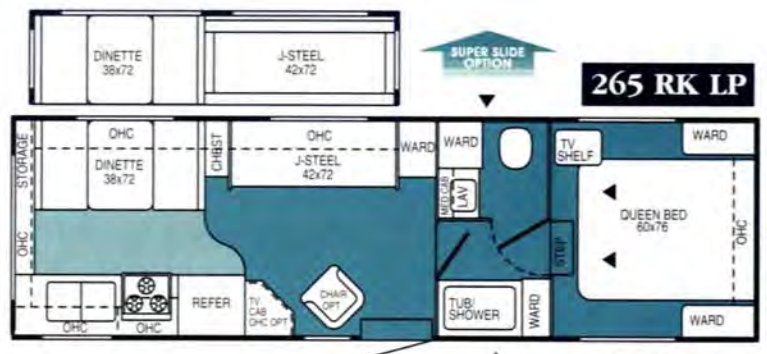
- ↻ = Front of Unit
- ▶ = Outside Storage Compartment

- = SuperSlide Option
- BH** = Bunk House

- FLR** = Front Living Room
- LP** = Low Profile
- RK** = Rear Kitchen
- RLR** = Rear Living Room
- SD** = Side Dinette
- SO** = Slideout



Options D, E



Options A, E



Options A, C, E

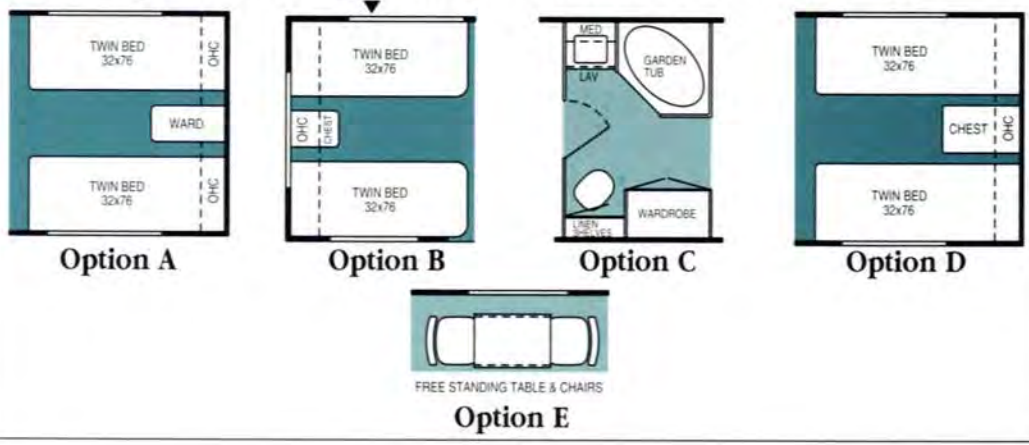


Options A, C, E



Options A, E

Optional Arrangements, See Codes Under Floor Plans



SPECIFICATIONS

Models	215 SD	255 RK	255 RK SO	265 RK LP	265 RLR LP	305 RK	305 RLR	325 FLR	325 RLR	345 RK
Exterior length	21'11"	25'11"	25'11"	27'11"	27'11"	30'11"	30'11"	32'11"	32'11"	35'11"
Exterior height	109"	109"	109"	132"	132"	134"	134"	134"	134"	134"
Exterior width	98"	98"	98"	98"	98"	98"	98"	98"	98"	98"
Interior headroom	77"	77"	77"	77"	77"	77"	77"	77"	77"	77"
Headroom/Bedroom	44"	44"	44"	63"	63"	72"	72"	72"	72"	72"
Approx. dry axle weight with std. equip. (lbs.)	3270	3780	4855	4595	4740	5245	4965	4660	5435	N/A*
Approx. dry hitch weight (lbs.)	945	1095	1130	1115	1115	1460	1580	1780	1560	N/A*
Approx. gross vehicle weight rating (lbs.)	5945	7095	8130	8715	8715	10060	10180	9580	10320	N/A*
Ducted furnace with thermostat & auto. ignition (BTU output)	20M	25M	25M	25M	25M	31M	31M	31M	31M	40M
Fresh water tank (approx. gals.)	30	30	30	50-1/2	50-1/2	50-1/2	50-1/2	46	50-1/2	50-1/2
Hot water heater (approx. gals.)	6	6	6	6	6	6	6	6	6	10
Gray water holding tank (approx. gals.)	37	33	66	63	30	70	37	37	37	70
Toilet with waste holding tank (approx. gals.)	37	33	33	33	33	37	37	37	37	37
Sleeping capacity	6	6	6	6	6	6	6	6	6	6

* These are new models. Some specifications were not available at time of printing. Please see your dealer for details.

THE JAYCO STORY

For over 25 years, Jayco recreation vehicles have been favorites of people who love to travel.

And for good reason. Our products are designed to be true homes.

They're built by a largely Amish work force, justifiably famous for its careful, meticulous detailing and fine craftsmanship.

They're solidly constructed for the long haul, too, combining traditional "one-unit-at-a-time" care with modern engineering and manufacturing processes, including computer-aided design.

A professional interior designer ensures that every Jayco RV home is appealingly styled and appointed to provide years of exceptional comfort; years of pleasure.

And a comprehensive Quality Assurance Program sees to it that Jayco's high standards are met at every stage of production.

Why do we go to such great lengths? Because we're a people-oriented company; a company that considers its employees, its dealers, and its customers alike as "family." And in that spirit, Jayco is committed to building products that not only bring our family, but yours closer together.

From Jayco's family to yours: "Welcome Home!"



Welcome Home



We cordially invite you, as we do all Jayco owners, to join the Jayco Jafari International Travel Club. Ask your dealer about the Jafari chapter, or "flight," as it's called, in your area. Or write Jayco directly.

LIMITED WARRANTY
Jayco recreational vehicles are warranted for twelve (12) months from the date of purchase against defects in materials and workmanship. Such warranty applies only to the original owner. A copy of this limited warranty is available for inspection upon request from your Jayco dealer. Separate manufacturers' warranties cover various components used in Jayco products.

PLEASE NOTE:
All illustrations and specifications contained in this brochure are based on the latest product information available at the time of publication approval. Because Jayco continually seeks to improve its products, and also because of changes in the availability of various components, Jayco reserves the right to make changes at any time in prices, colors, materials, equipment, specifications, and models, and to

discontinue models without notice or obligation. Components or parts may have been manufactured at times other than the model year indicated. Also, pictures in this brochure may show optional equipment available at extra cost. Recreation vehicles built for sale in Canada may differ somewhat to conform to Canadian codes. See your dealer for details.

For Further Information and Prices, See:

