

1994 DESIGNER SERIES™ FIFTH WHEELS

W E L C O M E H O M E

# JAYCO





35 Crane RLR with SuperSlide and DesignLine Interior in Blue



High-output Three-burner Range —  
Recessed to free up counter space.



30 Crane RK

WELCOME HOME ... to the most luxurious interpretation of residential-style living ever realized in a recreation vehicle.

It's the Jayco Designer Series™. Created for people like you; people who are serious about travel; serious about comfort; serious about living life to the fullest — and having a lot of *fun!*

Whether you're snowbirds, full-timers, long-term vacationers, or weekend wayfarers, you'll find the Designer Series a perfect haven wherever — and whenever — you choose to go. It's a welcome refuge from the hustle and bustle of daytime travel activities ...

continued on page 3



*Optional Oak-plank Flooring for Kitchen*

*Solid Oak Free-standing Table with four Chairs, two of which are Folding Chairs*



*Kitchen and Breakfast Nook, 35 Crane RLR*



*Elegant China Hutch in All 15' SuperSlides*

*Optional Coffee Table*



a pleasant setting for entertaining friends and family ... a relaxing base from which to enjoy the beauty and bounty of the great outdoors. In short, it's whatever you want it to be.

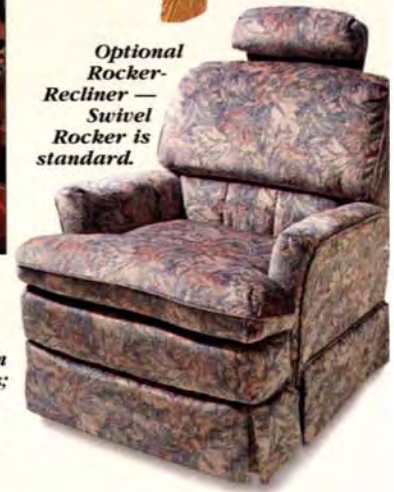
You can use it any time of the year, in virtually any climate, too. That's possible because of its superior insulation and features like a high-BTU furnace with a wall thermostat and floor-ducted heat, ceiling-ducted central air conditioning, and a fully enclosed underbelly. There's even a Full-timer's Option Package available for those whose sense of adventure knows no bounds!

In every respect, the Designer Series is built to endure. Case in point: its fiberglass, laminated sidewalls. They're the strongest of

*Optional Ceiling Fan*



*Optional Rocker-Recliner — Swivel Rocker is standard.*



*NEW! Extremely Quiet 110-volt to 12-volt Deluxe Electric Converter. Makes lights shine 25% brighter; improves smooth operation of electric slideout sections; operates all 12-volt motors (such as those controlling vent fans) more efficiently.*



*35 Crane RLR with SuperSlide and DesignLine Interior in Blue*

*Deluxe Window Treatment, featured throughout interior*





*Bedroom, 30 Crane RK, DesignLine™ Interior in Hunter Green*



*Optional Combination Washer-Dryer*

any RV's; vacuum-bonded in a unique process that creates an adhesion so powerful, it's actually stronger than the materials being laminated! And that's just the beginning of the Designer Series' construction story. For all of it, see page 6.

*Inside* the Designer Series is where its residential appeal really comes to the fore. Thoughtfully planned living areas, elegant fabrics from renowned mills, brand-name appliances and electronic components, rich custom-built oak cabinetry and trimwork, superb detailing and craftsmanship — all of this is indicative of the finest residential homes.



*Full-width Outside Storage Compartments with Sliding Bin*



*30 Crane RK Showing Jayco's Uniquely "Automotive" Rear End Cap*



Large Outside-accessed Storage Compartment contained behind sofa in SuperSlides



Cristal Blue

Woodland Brown

Hunter Green

Silverstone

And wait till you see the decor choices! Jayco's unique DesignLine™ interiors come in Cristal Blue, Silverstone, Woodland Brown, and Hunter Green. Each has its own distinctive fabric pattern, its own window treatment, and its own "designer" accessories. One of them is sure to fulfill *your* notions of what a beautiful, gracious interior should be.



Larger Brakes on all wheels provide extra peace of mind



Central Air Conditioning, standard

With this most people would concur: Gracious living is *spacious* living. And with the Designer Series, you've got it. Every model is eight feet wide and has ceilings 80 inches high at their lowest point. Better still, all models,

except the Front Living Room model, offer Jayco's huge SuperSlide slideouts. They add more space, more beauty, and more comfort to your total living experience —



Residential-style Side-by-side Refrigerator available in 37 Crane RK

without increasing trailer length.

Another point needs making. Just as the finest homes are given a lot of "curb appeal," so is Jayco's Designer Series. Everything about it says "class": from its smooth, white exterior sidewalls and end caps of molded fiberglass, to its gleaming, protective gel-coat finish, to its slim-line moldings and white, radius-cornered storage and utility compartments. One look, and you know the Designer Series is something quite extraordinary.

Take a look at the specifications chart on page 8. It will show you even more of the amenities that make a Designer Series the only travel home worthy of the serious traveler's serious consideration.



Queen Beds lift up on Piston Supports for easy access to storage space underneath

# CONSTRUCTION

Features like these help make the Designer Series an ideal year-round home for those who are serious about travel:

- 1) A standard, seamless rubber roof that helps keep the interior quiet.
- 2) A 3/8"-thick plywood roof deck, to which the rubber is bonded. This deck is strong enough to walk on. (At the very front of the unit only, the roof deck is 1/4"-thick luan.)
- 3) A 2x4 tapered rafter system that allows room for the ducting in Jayco's central air conditioning (standard).
- 4) A/C ducts of vinyl-covered wood, which, unlike metal, won't collect condensation that can rot the roof.
- 5) Fiberglass and Fome-Cor® insulation, with a total R-8 insulation factor in the roof.
- 6) A uniquely designed rear cap of fiberglass, molded in one piece.
- 7) A stylish front end cap of molded fiberglass that resists dents and scratches; provides exceptional strength (shown on page 1.)
- 8) Laminated sidewalls — the industry's strongest — vacuum-bonded to make each entire wall

more structurally sound. Vacuum-bonding is far superior to pinch-roller lamination, because, a) it uses a urethane adhesive that actually creates a bond stronger than the



*Jayco's unique vacuum-bond lamination process uses state-of-the-art equipment to ensure that the urethane adhesive is evenly and thoroughly applied. This results in a bond stronger than any other.*

materials being bonded, and b) the laminated materials are kept under pressure for about 45 minutes, as opposed to the mere seconds other lamination processes use.

- 9) A smooth fiberglass outer skin — actually molded in one large sheet to a luan backer. It has a thick gel-coat finish, too, which

gives the surface a bright, lustrous, high-gloss sheen. This assembly is then laminated to ...

- 10) 1-1/2" polystyrene substrate insulation and ...
- 11) A sidewall frame that includes aluminum reinforcement for additional strength. Thanks to Jayco's lamination process, no ugly rivets hold the skin to the frame.
- 12) A completely enclosed underbelly that provides extra

insulation, fully protects all systems, has removable holding tank covers for easy maintenance access, and provides better towing aerodynamics.

- 13) A 2x3 floor system, with members running front to back. This allows the heating ducts to run straight, the full length of the unit, enabling them to retain air velocity for better heat distribution. Heat registers are conveniently located out of high-traffic areas.

- 14) A strong, durable 5/8"-thick plywood floor decking with tongue-and-groove joints that hold fast and prevent problems at seams.

- 15) Floor insulation of R-7 fiberglass and R-1 Fome-Cor, the latter of which also insulates the heat ducts to reduce heat loss and acts as a barrier to sound and wind.

- 16) Enclosed holding tanks and plumbing with heat ducted to them to prevent freezing. This, among other notable features, makes the Designer Series ideal for year-round travel in virtually any weather.

- 17) Large storage compartments with protective "automotive" liners.



*The Designer Series floor is exceptionally strong, thanks to its 5/8"-thick plywood deck with tongue-and-groove joints.*



Roof and Rear End Cap



Sidewalls and Floor

# SPECIFICATIONS

Models	30 RK	32 FLR	32 RK	32 RLR	35 RLR	37 RK
Exterior length	31' 8 <sup>3</sup> / <sub>4</sub> "	34' 4 <sup>1</sup> / <sub>4</sub> "	34' 4 <sup>1</sup> / <sub>4</sub> "	34' 4 <sup>1</sup> / <sub>4</sub> "	37' 3 <sup>3</sup> / <sub>4</sub> "	39' 4 <sup>7</sup> / <sub>8</sub> "
Exterior height	12'1"	11'10"	11'10"	11'10"	11'10"	12'2"
Exterior width	96"	96"	96"	96"	96"	96"
Interior headroom	80"	80"	80"	80"	80"	80"
Sleeping capacity	4	4-6	4	4	4	4
Approx. dry axle weight with std. equip. (lbs.)	7130	6250	7655	7760	8965	9825
Approx. dry hitch weight (lbs.)	2040	2125	2105	1905	2205	1900
Approx. gross vehicle weight (lbs.)	12040	12125	12105	11905	13705	14065
Fresh water tank capacity (approx. gals.)	50 <sup>1</sup> / <sub>2</sub>	50 <sup>1</sup> / <sub>2</sub>	50 <sup>1</sup> / <sub>2</sub>	50 <sup>1</sup> / <sub>2</sub>	50 <sup>1</sup> / <sub>2</sub>	83
Gray water holding tank (approx. gals.)	43	39	43	43	43	43/30 <sup>1</sup> / <sub>2</sub>
Toilet holding tank (approx. gals.)	43	42	43	43	43	43
Hot water heater gas/electric auto. ignition (approx. gals.)	10	10	10	10	10	10
2-door LP/110V refrigerator (cu. ft.)	8	8	8	8	8	8
Furnace with thermostat and auto. ignition (BTU input)	31M	31M	31M	31M	40M	40M
Twin LP gas bottles with auto. change-over regulator (lbs.)	30	30	30	30	30	30
Awning size	19'	22'	20'	22'	25'	25'
Electric brakes/all wheels	12 <sup>1</sup> / <sub>4</sub> X2 <sup>1</sup> / <sub>2</sub>	12 <sup>1</sup> / <sub>4</sub> X2 <sup>1</sup> / <sub>2</sub>	12 <sup>1</sup> / <sub>4</sub> X2 <sup>1</sup> / <sub>2</sub>	12 <sup>1</sup> / <sub>4</sub> X2 <sup>1</sup> / <sub>2</sub>	12 <sup>1</sup> / <sub>4</sub> X2 <sup>1</sup> / <sub>2</sub>	12 <sup>1</sup> / <sub>4</sub> X2 <sup>1</sup> / <sub>2</sub>
Tire size	HT235/ R16E	HT235/ R16E	HT235/ R16E	HT235/ R16E	HT235/ R16E	HT235/ R16E

HEAT, POWER & WATER
Power cords (USA, 50 amps)
Exterior receptacle (110V)
Electrical system (12V) with 40 amp convertor
Dual batteries
Demand water pump (12V)
Monitor panel in range hood
Combination city/gravity water fill

EXTERIOR/CONSTRUCTION FEATURES
Smooth fiberglass laminated walls
Rubber roof
Reinforced roof for luggage rack and ladder
Ceiling ducted A/C (13.5 BTU) Low Profile
Fome-Cor® board insulation (1/4") (front wall and roof)
Outside trunk storage
Gas struts, rear storage door and stone guards
Radius metal skirt
Completely enclosed underbelly and frame
Entrance door with screen, assist handle and dead bolt lock
Radius-cornered awning windows with screens
Safety glass
Shock absorbers
Stabilizer jacks, 2 rear
Electric jacks (12V)
Hitch light (12V)
Patio light (12V) (door side and off door side)
Wrap around automotive tail lights
TV antenna

LIVING ROOM FEATURES
Super SlideOut (all models except 32 FLR)
Radius cornered cabinets
Solid oak cabinet doors (uppers cathedral)
Solid oak cabinet fronts
Oak assist handle
Magazine rack
Carpet and pad (living room, bedroom and bathroom)

LIVING ROOM FEATURES (continued)
J-steel sofa (32 FLR only)
Swivel rocker
Ottoman
Pleated shades or blinds (living and bedroom areas)
Mini-blinds (bathroom/kitchen)
Framed picture (some models)
AM/FM/cassette stereo with four speakers
Cable TV hook-up
Telephone jack
Decorator clock
Doorbell
Two or three night lights

BEDROOM FEATURES
Bed struts (with queen bed)
Inner-spring mattress
Bedsread
Bed skirt
Throw pillows

KITCHEN FEATURES
Free standing table with four chairs, two folding (all models except 32 FLR)
High output three-burner recessed range
Piezo lighter for range
Stove cover (flush mount)
Range hood with power vent and light
Microwave oven (in OHC)
Double porcelain sink
Sink sprayer
Sink cover cutting board/hot plate
Pull-out pantry (not in all models)
Oak valance

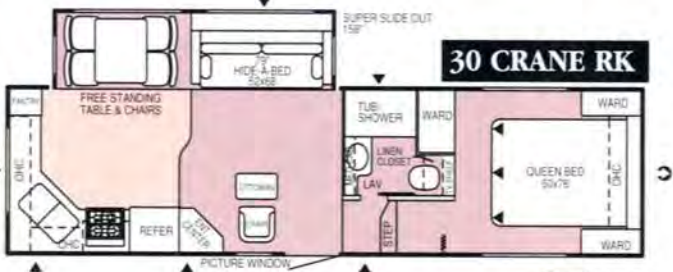
BATHROOM FEATURES
One piece tub/shower
Sliding or swinging tub enclosure
Power roof vent (12V)
Medicine cabinet with mirror
Oak valance

OPTIONAL FEATURES
MOR/ryde® rubber suspension system
SlideOut in bedroom (35 RLR, 37 RK only)
Full-timer package
Extra roof insulation
Generator prep
Generator
Awning
Rear window awning (stone guard) (30 RK, 32 RK, 32 FLR, 37 RK only)
Roof rack and ladder
Outside shower
Fifth wheel hitch
Non-ducted A/C (13.5M BTU) (bedroom, 35 RLR)
Washer/dryer (35 RLR, 37 RK only)
Ceiling fan
Dometic® refrigerator with ice maker
Two door side by side refrigerator 10 cu. ft. (available in 37 RK only)
Convection microwave
Garbage disposal
Water purifier
AM/FM/cassette CD with four speakers and antenna (12V)
TV (19" in living room)
VCR
Day/night pleated shades*
Skylight over tub (14x22) (with pleated shade)
Skylight in living area (14x30) — with pleated shade (32 FLR only)
Planked oak floor (kitchen area)
Rocker/recliner (in lieu of swivel rocker)
Free-standing table with two chairs (32 FLR only)
Extra free-standing chairs — two folding (32 FLR only)
Coffee table

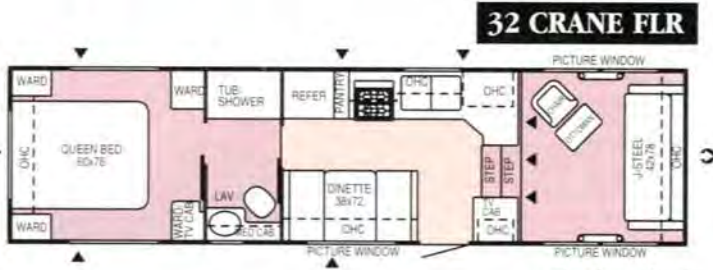
\* Not available with Hunter Green.



# FLOOR PLANS



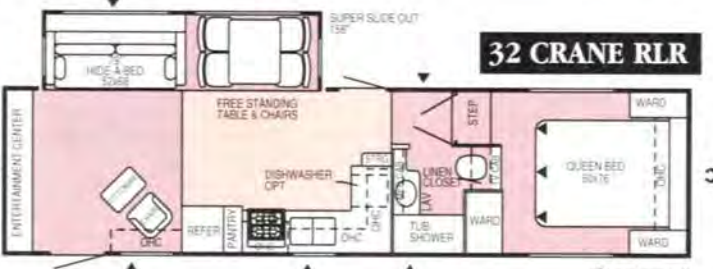
Option A



Options B, C



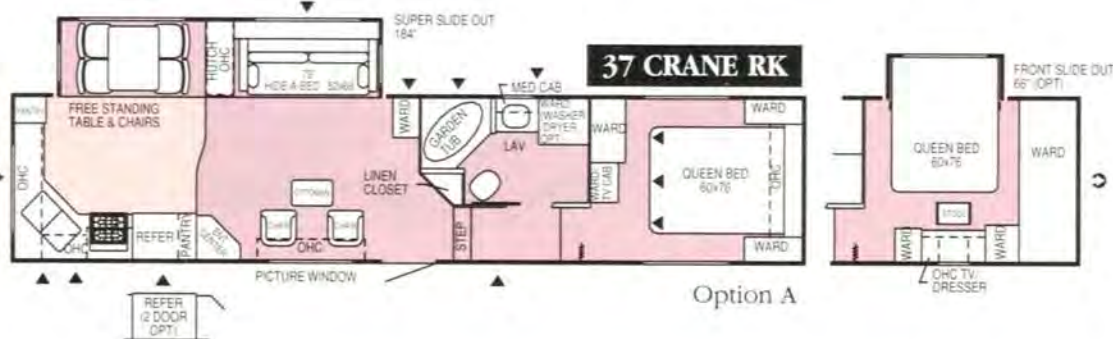
Option A



Option A



Option A



Option A

## Optional Arrangements, See Codes Under Floor Plans



Option A

Option B



Option C

## KEY TO FLOOR PLAN CODES:

- ⤵ = Front of Unit
- ▶ = Outside Storage Compartment

**FLR** = Front Living Room

**RK** = Rear Kitchen

**RLR** = Rear Living Room

# THE JAYCO STORY

For over 25 years, Jayco recreation vehicles have been favorites of people who love to travel.

And for good reason. Our products are designed to be true homes.

They're built by a largely Amish work force, justifiably famous for its careful, meticulous detailing and fine craftsmanship.

They're solidly constructed for the long haul, too, combining traditional "one-unit-at-a-time" care with modern engineering and manufacturing processes, including computer-aided design.

A professional interior designer ensures that every Jayco RV home is appealingly styled and appointed to provide years of exceptional comfort; years of pleasure.

And a comprehensive Quality Assurance Program sees to it that Jayco's high standards are met at every stage of production.

Why do we go to such great lengths? Because we're a people-oriented company; a company that considers its employees, its dealers, and its customers alike as "family." And in that spirit, Jayco is committed to building products that not only bring our family, but yours closer together.

From Jayco's family to yours: "Welcome Home!"



Welcome Home



We cordially invite you, as we do all Jayco owners, to join the Jayco Jafari International Travel Club. Ask your dealer about the Jafari chapter, or "flight," as it's called, in your area. Or write Jayco directly:

**LIMITED WARRANTY**  
Jayco recreational vehicles are warranted for twelve (12) months from the date of purchase against defects in materials and workmanship. Such warranty applies only to the original owner. A copy of this limited warranty is available for inspection upon request from your Jayco dealer. Separate manufacturers' warranties cover various components used in Jayco products.

**PLEASE NOTE:**  
All illustrations and specifications contained in this brochure are based on the latest product information available at the time of publication approval. Because Jayco continually seeks to improve its products, and also because of changes in the availability of various components, Jayco reserves the right to make changes at any time in prices, colors, materials, equipment, specifications, and models, and to

discontinue models without notice or obligation. Components or parts may have been manufactured at times other than the model year indicated. Also, pictures in this brochure may show optional equipment available at extra cost. Recreation vehicles built for sale in Canada may differ somewhat to conform to Canadian codes. See your dealer for details.

For Further Information and Prices, See:

