

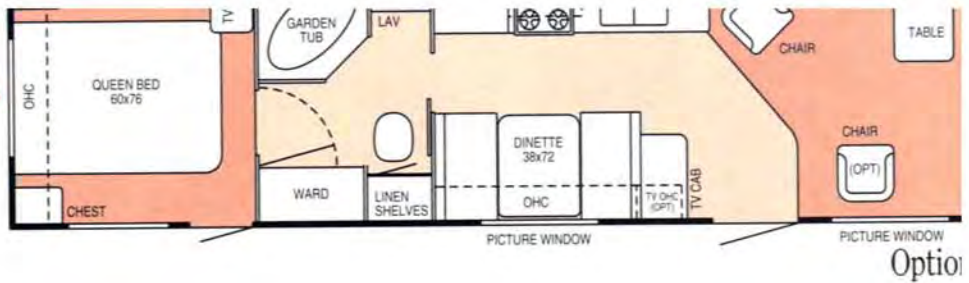
JAYCO
**Eagle
Series**



1993 TRAVEL TRAILERS & FIFTH WHEELS



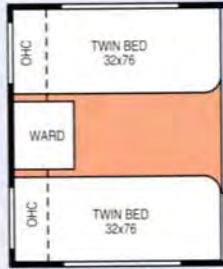
Jayco



Option

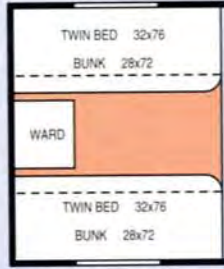
Optional arrangements, see codes under floorplans

Option A



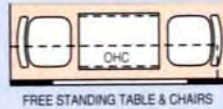
TWIN BEDS

Option B



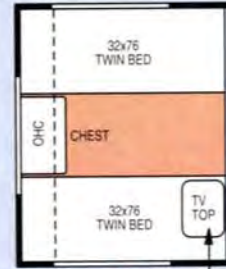
BUNK BEDS

Option C



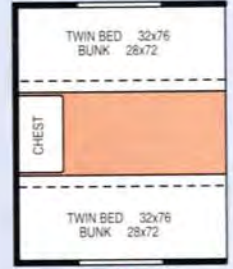
FREE STANDING TABLE & CHAIRS

Option D

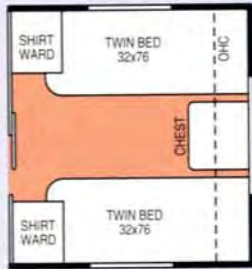


(LOCATION VARIES)
TWIN BEDS

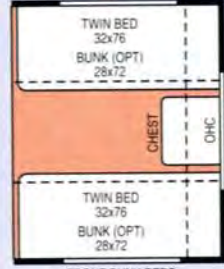
Option E



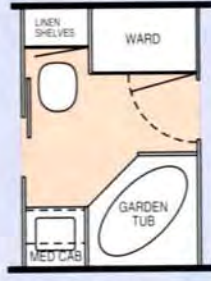
(LOCATION VARIES)
BUNK BEDS



FRONT TWIN BEDS



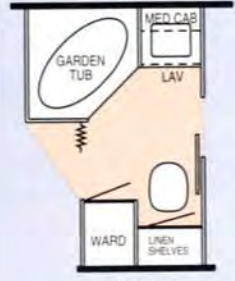
FRONT BUNK BEDS



GARDEN TUB



GARDEN TUB



GARDEN TUB

Option G

Option H

Option I

Option J

Option K

EAGLE SERIES FIFTH WHEEL SPECIFICATIONS

| SPECIFICATIONS | 185 RD SL | 215 SD SL | 245 CB SL | 255 RK SL | 255 RK SL SO | 265 RK LP | 265 RLR SL | 265 RLR SL SO | 285 RK LP | 285 RK LP SO | 305 RK SU | 305 RLR SU | 305 RLR LP | 305 RLR LP SO | 325 RK SU SO | 325 FLR SU | 325 RLR SU |
|--|-----------------|-----------------|-----------------|-----------------|-----------------|-----------------|-----------------|-----------------|-----------------|-----------------|-------------|-------------|-------------|---------------|-----------------|-----------------|-----------------|
| Exterior length | 18'11" | 21'11" | 24'10" | 25'11" | 25'11" | 27'11" | 26'11" | 26'11" | 28'11" | 28'11" | 30'11" | 30'11" | 30'11" | 30'11" | 32'11" | 32'11" | 32'11" |
| Exterior height | 109" | 109" | 109" | 109" | 109" | 130" | 109" | 109" | 123" | 123" | 134" | 134" | 123" | 123" | 134" | 134" | 134" |
| Exterior width | 87" | 98" | 98" | 98" | 98" | 98" | 98" | 98" | 98" | 98" | 98" | 98" | 98" | 98" | 98" | 98" | 98" |
| Interior head room | 77" | 77" | 77" | 77" | 77" | 77" | 77" | 77" | 77" | 77" | 77" | 77" | 77" | 77" | 77" | 77" | 77" |
| Approx. dry axle weight with std. equipment (lbs.) | 2685 | 3115 | 3690 | 3705 | 4455 | 5110 | 4015 | 4655 | 4095 | 4875 | 4795 | N/A | 4100 | 5165 | 4660 | 5010 | N/A |
| Approx. dry hitch weight (lbs.) | 795 | 945 | 1185 | 1020 | 1100 | 995 | 1010 | 1005 | 1205 | 1060 | 1300 | N/A | 1340 | 1195 | 1780 | 1870 | N/A |
| Approx. gross vehicle weight rating (lbs.) | 5635 | 6265 | 6685 | 7020 | 8100 | 6935 | 7410 | 8005 | 7705 | 8060 | 9900 | N/A | 8340 | 8595 | 9180 | 11070 | N/A |
| Awning size | 10' | 13' | 16' | 16' | 16' | 18' | 18' | 18' | 18' | 18' | 20' | 20' | 20' | 20' | 20' | 20' | 20' |
| Ducted furnace with thermostat & auto. ignition (BTU output) | 20M | 20M | 25M | 25M | 25M | 25M | 25M | 25M | 25M | 25M | 31M | 31M | 31M | 31M | 31M | 31M | 31M |
| Fresh water tank (approx. gallons) | 30 | 30 | 35 | 30 | 30 | 50-1/2 | 30 | 40 | 30 | 30 | 50-1/2 | 50-1/2 | 50-1/2 | 40 | 46 | 38 | 50-1/2 |
| Hot water heater (approx. gallons) | 6 | 6 | 6 | 6 | 6 | 6 | 6 | 6 | 6 | 6 | 6 | 6 | 6 | 6 | 6 | 6 | 6 |
| Gray water holding tank (approx. gallons) | 35 | 35 | 35 | 35 | 60 | 71 | 35 | 36 | 35 | 71 | 71 | 36 | 70 | 36 | 35 | 70 | 36 |
| Toilet with waste holding tank (approx. gallons) | 35 | 35 | 35 | 35 | 35 | 36 | 35 | 36 | 35 | 36 | 36 | 36 | 35 | 36 | 35 | 35 | 36 |
| Electric brakes/all wheels | 10" | 10" | 10" | 10" | 10" | 10" | 10" | 10" | 10" | 10" | 12" | 12" | 12" | 12" | 12" | 12" | 12" |
| Tire size | P185/80R13 | ST205/75R15 | ST205/75R15 | ST205/75R15 | ST205/75R15 | ST205/75R15 | ST205/75R15 | ST205/75R15 | ST205/75R15 | ST205/75R15 | ST225/75R15 | ST225/75R15 | ST225/75R15 | ST225/75R15 | ST225/75R15 | ST225/75R15 | ST225/75R15 |
| Twin LP gas bottles (lbs.) | Single 30 | Single 30 | 30 | 30 | 30 | 30 | 30 | 30 | 30 | 30 | 30 | 30 | 30 | 30 | 30 | 30 | 30 |
| Sleeping capacity | 4 | 6 | 6 | 6 | 6 | 6 | 6 | 6 | 6 | 6 | 6 | 6 | 6 | 6 | 6 | 6 | 6 |
| Refrigerator Power Source Cubic Feet | LP/110V 5/6 OPT | LP/110V 5/6 OPT | LP/110V 5/6 OPT | LP/110V 5/6 OPT | LP/110V 5/6 OPT | LP/110V 5/6 OPT | LP/110V 5/6 OPT | LP/110V 5/6 OPT | LP/110V 5/6 OPT | LP/110V 5/6 OPT | LP/110V 6 | LP/110V 6 | LP/110V 6 | LP/110V 6 | LP/110V 6/8 OPT | LP/110V 6/8 OPT | LP/110V 6/8 OPT |
| Headroom/Living Room | 44" | 44" | 44" | 44" | 47" | 63" | 44" | 47" | 58" | 60" | 72" | 72" | 58" | 60" | 72" | *72" | 72" |

* Headroom/Living Room

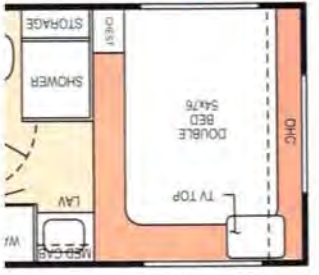
EAGLE SERIES™ TRAVEL TRAILERS AND FIFTH WHEELS

- Experience shows. And Jayco's 25 years of design and engineering excellence have really left their mark on the 1993 Eagle Series!
- Choose an Eagle Series travel trailer or an Eagle Series fifth wheel. Either way, you get more comfort, craftsmanship, style, and durability than you'd ever thought possible in an RV priced so low!
- Here's just a sample of what Jayco's Eagle Series provides for you:
 - Clean, contemporary exterior graphics
 - A spacious 8-foot width
 - Custom-designed interiors
 - Color-coordinated window treatments
 - Radius-cornered windows
 - A I-steel sofa that converts into a bed (in most models)
 - Abundant storage space
 - Overhead cabinets with oak-framed doors and attractive hardware
 - Optional raised oak panels on cabinet doors
 - Deep, large-capacity overhead cabinets in kitchen and dinette areas
 - Big, accommodating wardrobes with divided hanger bars
 - A TV shelf in the bedroom
 - Name-brand appliances
 - A flush-mounted refrigerator with a framed door
 - A four-burner range with an oversized built-in oven
- Wood battens on the ceiling
- Optional washer-dryer combos in some models
- Easy-operating electric slideouts in some models
- Super-big SuperSlides in some 5th wheels
- Walk-around queen beds (in most models) that lift up easily on piston supports to expose large storage areas underneath
- Innerspring mattresses and quilted bedspreads
- Sturdy 2x4 roof rafters
- Optional ceiling-ducted air-conditioning (available in models of 27' and up)
- A dependable 5/8" plywood floor with tongue-and-groove seams
- In-floor ducted heating (in most models)
- A crank-up TV antenna
- A large outside storage compartment
- Dual 30-pound LP-gas tanks (in most models)
- A flush-mounted refrigerator with a framed door with an auto regulator
- A dead-bolt lock on the entrance door
- A black range hood and stove top
- A systems monitor panel for checking the dual holding tanks, the fresh water tank, and battery levels
- A bathroom power vent
- An easy-to-clean tub surround (in most models)
- Fashionable, practical mirrors in some living areas

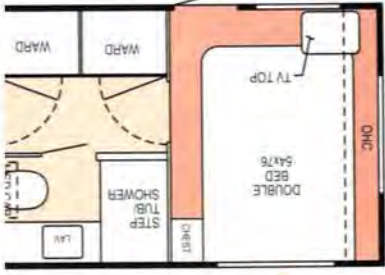
EAGLE SERIES™



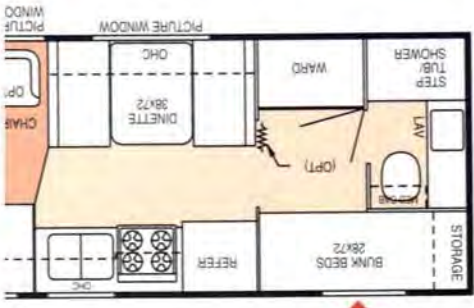
180 RB



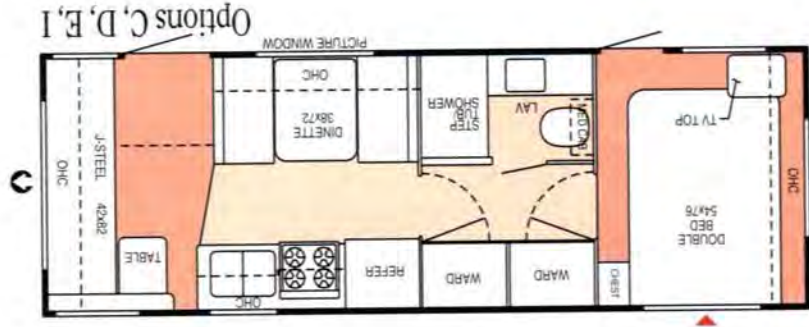
250 FS



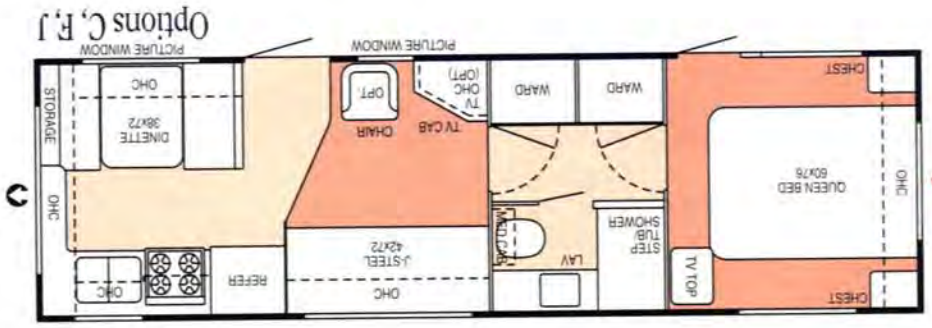
265 FK



300 FB BH



265 FS



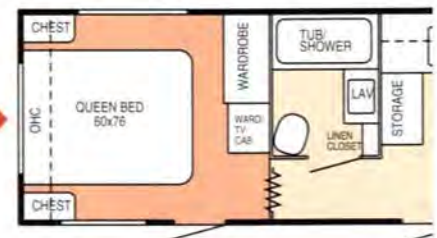
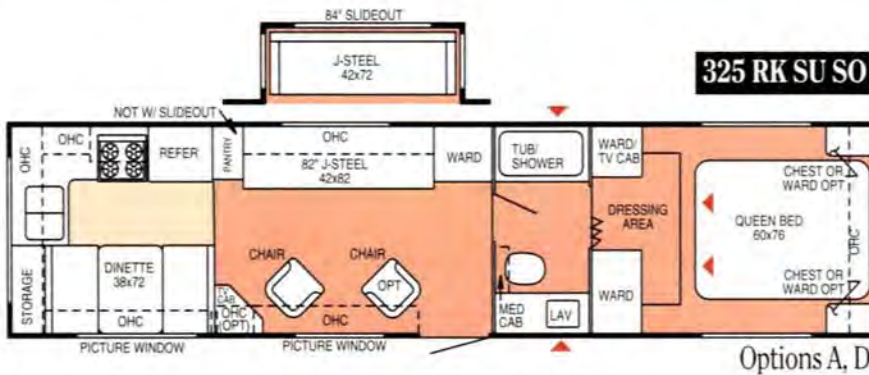
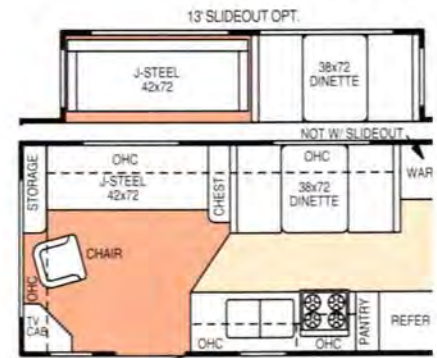
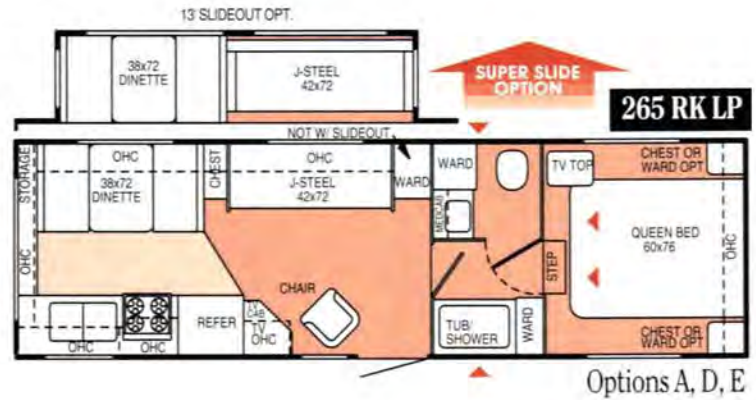
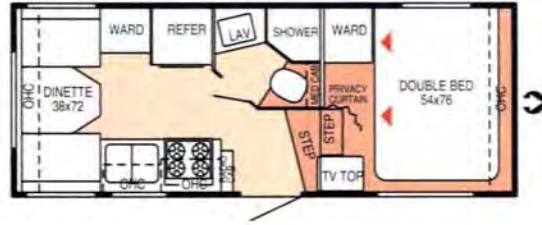
300 FK

250 FS

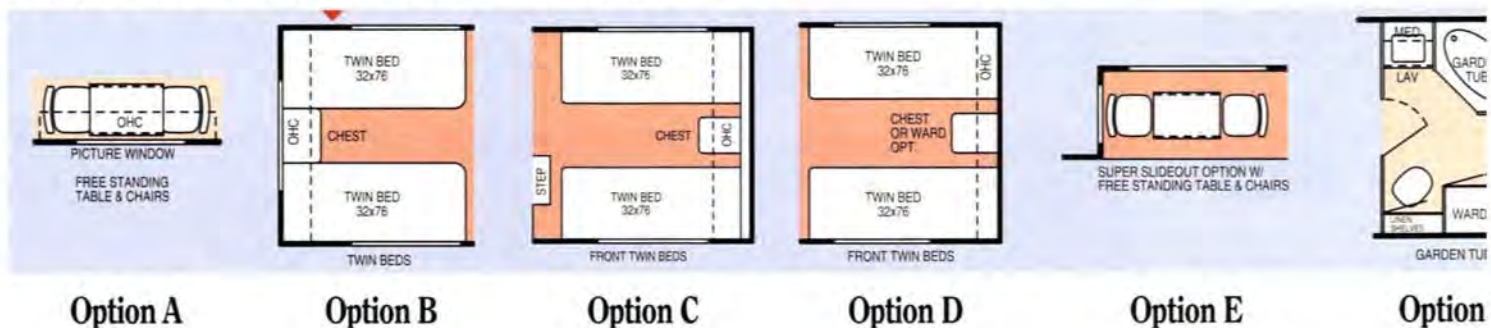
EAGLE SERIES™ FIFTH WHEEL FLOORPLANS

Here's your chance to take off and *soar!* Jayco's Eagle Series™ RVs let you travel first-class — at a "coach" rate! We're talking real luxury here, too. Inside and out, the Eagle Series is exquisitely styled and thoughtfully appointed for today's tastes; today's needs. And it's especially well-suited to today's budgets!

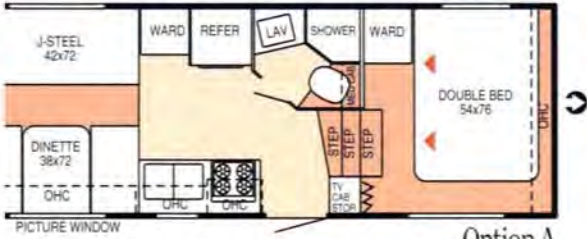
185 RD SL



Optional arrangements, see codes under floorplans

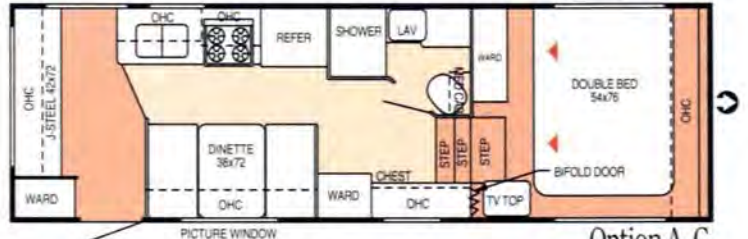


215 SD SL



Option A

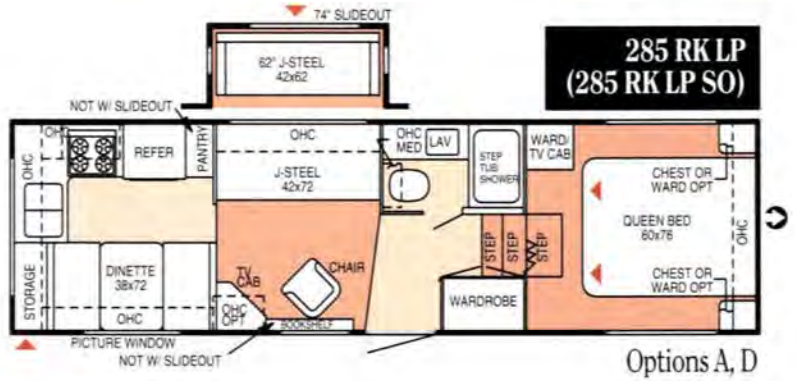
245 CB SL



Option A, C



Options A, C, F



Options A, D



Options A, D, E, F



Options A, D



Options A, B



Options A, D, E

KEY TO FLOORPLAN CODES:

- ↻ = Front of Unit
- ▲ = Outside Storage Compartment
- 🏠 = SuperSlide Option
- CB = Center Bathroom
- FLR = Front Living Room
- RD = Rear Dinette
- RK = Rear Kitchen
- RLR = Rear Living Room
- SD = Side Dinette
- SO = Slideout Section

ROOF PROFILES:

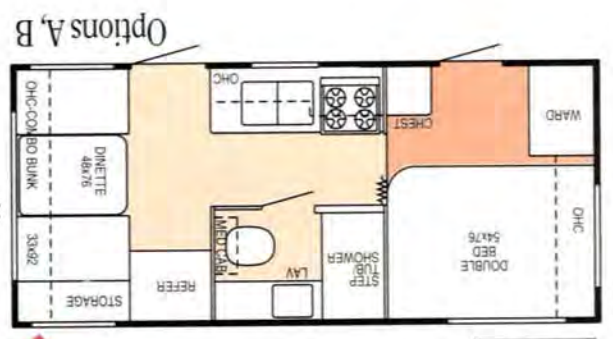
SL = Straight Line

LP = Low Profile

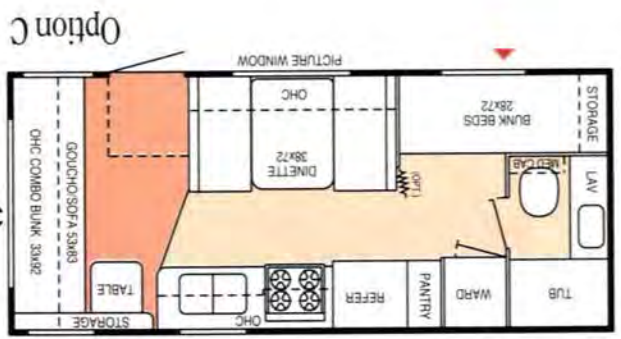
SU = Stand Up

VEL TRAILER FLOORPLANS

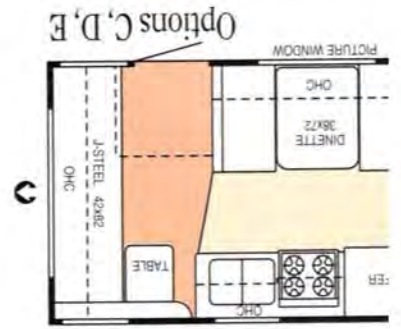
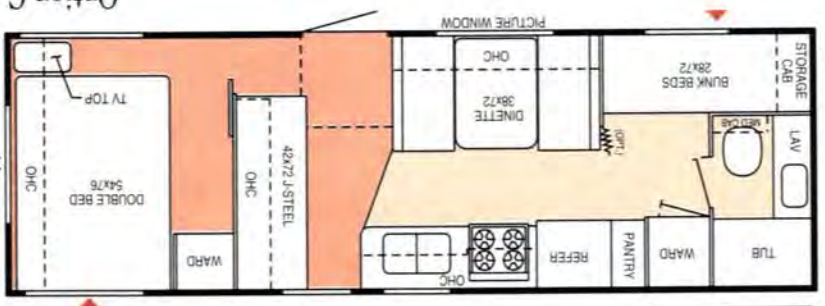
220 CB



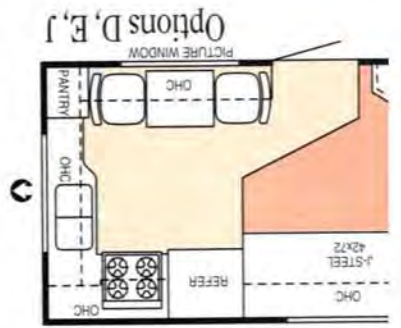
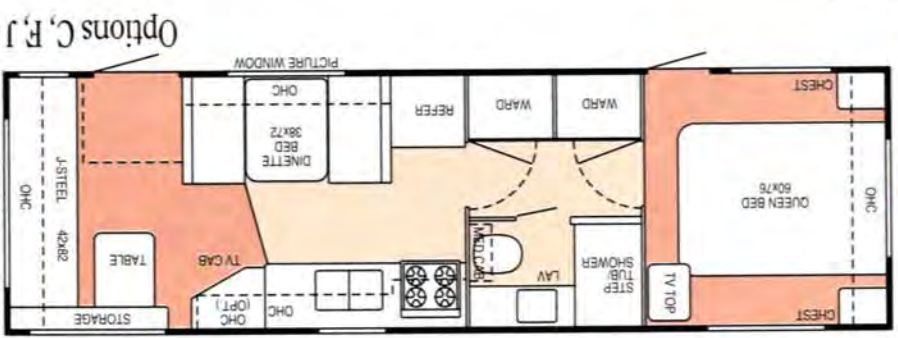
220 BH



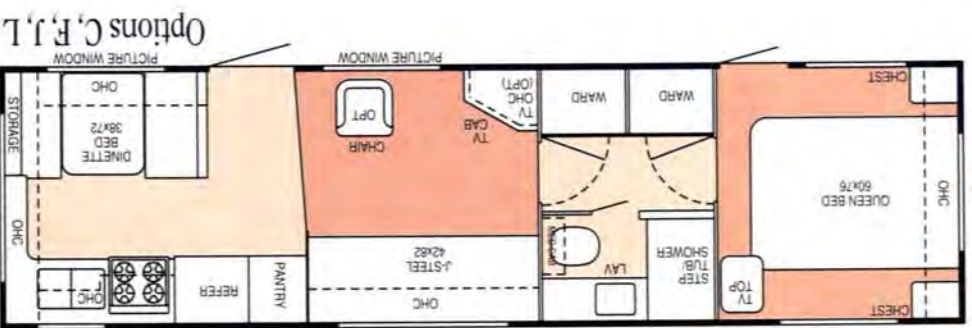
265 FB BH



300 FS



325 FK



360 FR BD



EAGLE SERIES INTERIORS

The 1993 Eagle Series™ truly has it all! Crisp, clean exterior lines. Fresh, fashionable decors in Blue, Brown, Jade, and Plum. Roomy floor plans. Space-adding slideouts. A host of practical, comfort-enhancing features. Built-in longevity. Solid warranty coverage. And service backed by Jayco's long-standing reputation for honesty and integrity.

Okay, so maybe there is one thing it *doesn't* have: the price you'd expect to pay for all this! Because the Eagle Series, brand new, costs less than many *used* RVs!

With 25 years behind it, Jayco knows what it takes to give you the home-like comforts you want at a price that's comfortable, too! There's a word for that. It's *value*. And the Eagle Series is its best expression yet!



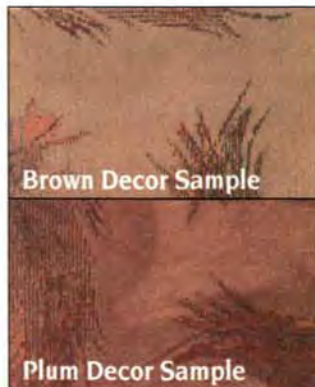
305 RK Fifth Wheel, Blue Decor



265 FS Travel Trailer, Jade Decor



305 RK Fifth Wheel, Blue Decor



Brown Decor Sample

Plum Decor Sample



We cordially invite you, as we do all Jayco owners, to join the Jayco Jafari International Travel Club. Ask your dealer about the Jafari chapter, or "flight," as it's called, in your area. Or write Jayco directly.

LIMITED WARRANTY
Jayco recreational vehicles are warranted for 12 months from the date of purchase against defects in materials and workmanship. Such warranty applies only to the original owner. A copy of this limited warranty is available for inspection upon request from your Jayco dealer. Separate manufacturers' warranties cover various components used in Jayco products.

PLEASE NOTE:
All illustrations and specifications contained in this brochure are based on the latest product information available at the time of publication.

approval. Because Jayco continually seeks to improve its products, and also because of changes in the availability of various components, Jayco reserves the right to make changes at any time in prices, colors, materials, equipment, specifications, and models, and to discontinue models without notice or obligation. Components or parts may have been manufactured at times other than the model year indicated. Also, pictures in this brochure may show optional equipment available at extra cost. Recreational vehicles built for sale in Canada may differ somewhat to conform to Canadian codes. See your dealer for details.



Jayco, Inc. • P.O. Box 460 • Middlebury, IN 46540

For Further Information and Prices, See:

© 1992 Jayco, Inc. 12-15224 0892 Litho in U.S.A.

