

JAYCO[®]

**1989
JAY SERIES[™]
&
DESIGNER SERIES[™]
FOLD-DOWNS**

**Specifications
and Floorplans**

Standard Features

Whichever model you choose — the lovely, economical Jay Series or the luxurious, high-line Designer Series — you can trust your Jayco fold-down camping trailer to provide you with everything that makes the RV life worth living!

Jay Series

Exterior Features

25' power cord
Flush spare tire mount
Heavy-duty welded safety bumper
1" thick self-storing full screen door with storm window
Designer wheels (except Jay 705 and Jay 806)
2" hitch ball coupler with safety chain
20# LP gas tank with regulator (except Jay 705 and Jay 806)
Self-storing stabilizing jacks

Construction Features

Galvanized wheel wells
Treated plywood flooring
Torsion axle suspension
Double sidewall construction
Metal track slide-in bed rails
Domed insulated roof
Patented Jayco lift system
Bed roller system
Nylon bearings in lifter system
Permanently attached zippered duck canvas
Water-repellent canvas (10.10 oz.)
Tinted side windows/screens
3" C-channel steel frame (4" on Jay 1206 and Jay 1208)

Interior Features

Fire extinguisher
14" x 14" roof vent
Emergency exit
Inside 110-volt receptacles
Top-grade vinyl flooring
Oak-grain interior paneling
Wood drawers with nylon center guides
Positive drawer & door catches
Window curtains
3" foam cushions with zippers

Galley Features

35 lb. ice chest (75 lbs. in Jay 1206 and Jay 1208)
City water hook-up*
12-volt electric system with convertor - 6 amp.*
Galley and porcelain sink*

* Included in optional kitchen console on 705 and 806 models.

Designer Series

Exterior Features

Two lockable trunk compartments in rear
Designer wheel with chrome center hub cap
12-volt patio light
25' power cord
Outside storage trunk
Recessed spare tire mount
Heavy-duty welded safety bumper
1" thick self-storing full-screen door with storm window
Outside receptacle
20# LP gas tank with regulator
Recessed taillights with backup light
Outside table bracket
Gas bottle cover
2" hitch ball coupler with safety chain
4 self-storing stabilizer jacks

Construction Features

Galvanized wheel wells
Treated plywood flooring
Torsion axle suspension system
Double sidewall construction
Metal track slide-in bed rails
Domed insulated roof
Patented Jayco lift system (Pat. No. 3,495,866)
Bed roller system
Nylon bearings in lifter system
Permanently attached zippered duck canvas
Water-repellent canvas (10.10 oz.)
Tinted side windows/screens
Fiberglass exterior
One-piece front and rear end caps
4" C-channel steel frame

Galley Features

City water hook-up
Overhead cabinet
Light under overhead cabinet
Galley & porcelain sink
75-lb. ice chest (except King Deluxe and Cardinal SD)
2-way galley pump (hand pump and city water) (except King Deluxe and Cardinal SD)

Interior Features

Fire extinguisher
14" x 14" roof vent
Emergency exit
Inside 110-volt receptacle
Top-grade vinyl flooring
Oak-grain interior paneling
Convenient adjustable mirror on entrance door
Enclosed portable toilet compartment (except Cardinal SD)
Wood drawers with Delta nylon guide system and rollers
Positive drawer and door catches
Window curtains
Bunk end privacy curtains
4" foam cushions and backs with zippers
Additional 1" Dacron padding in cushions

Items in italics are exclusive standard features of the Designer Series.

Optional Features

Even with all the great standard features you get in a Jay Series or Designer Series fold-down, Jayco recognizes that *your* style may differ from someone else's. So Jayco gives you plenty of options to choose from too. Any of these options will help make a Jayco fold-down *truly* your own!

Jay Series and Designer Series models

- 12-volt patio light (Standard on Designer Series)
- Bunk end privacy curtains (Standard on Designer Series)
- Water-repellent 7-oz. Evolution 3 tent fabric



- LP gas/110V electric refrigerator - Dometic RM2301 (in Kings, Cardinals, Jay 1206)
- LP gas/12V electric refrigerator - Dometic RM2190 (except Jay 705, King Deluxe and Cardinal SD)
- LP gas/110V electric refrigerator - Dometic RM2201 (except Jay 705, King Deluxe and Cardinal SD)
- Spare tire cover
- Automatic gas regulator
- Furnace (12,000 or 16,000 BTU input, Piezo Ign.)
- Furnace (12,000 or 16,000 BTU input, Electronic Ign.)
- Canopy/screen enclosure
- Jayco add-a-room enclosure
- Boat rack
- Luggage rack

- Hydraulic surge brakes with break-away chain (Standard in Kings, Cardinals, Jay 1206 and Jay 1208)
- Porta Potti portable toilet



"Safety Step" (removable)



"Step-N-Stor" (self-storing)



Mark II Step (self-storing)

- Deluxe package (includes privacy drapes, 4" cushions, patio light, outside table bracket & adjustable table leg, door holder, outside receptacle, valances) (Jay Series only)



20# double gas bottle hookup



- Gas bottle cover (Standard on Designer Series)
- Battery pack (battery box and charger)
- Spare tire and wheel
- 8" baby moon hubcaps (Jay Series)

The Strength of Experience

For over twenty years, now, people have learned to rely on Jayco RVs. And it stands to reason. We build our products to last; to keep on providing families the perfect home base for their travel and recreation activities. However long you keep your Jayco RV; however many miles you travel with it, you can trust it to remain solid, to withstand almost anything — from the typical day-to-day punishment any family can dish out, to the roughest campground roads. A look at the following construction features will give you a good idea of why so many experienced RVers count on Jayco.

The roof is insulated, and fully laminated with aluminum, inside and out, for greater strength. You have our **5-Year Limited Warranty*** on it!

Our vinyl-clad interior paneling not only looks good, but lasts. And it cleans exceptionally well.

Nylon rollers in the endwalls make it easy to pull the end bunks out.

Attractive, easy-to-clean vinyl flooring is standard in both series.

The single, easy-to-use crank makes operating Jayco's patented lifter system a breeze — even for one person (Pat. No. 3,495,866).

The steel gas bottle mount accepts two 20-lb. gas bottles.

A leveling crank is permanently attached to raise or lower the front end.

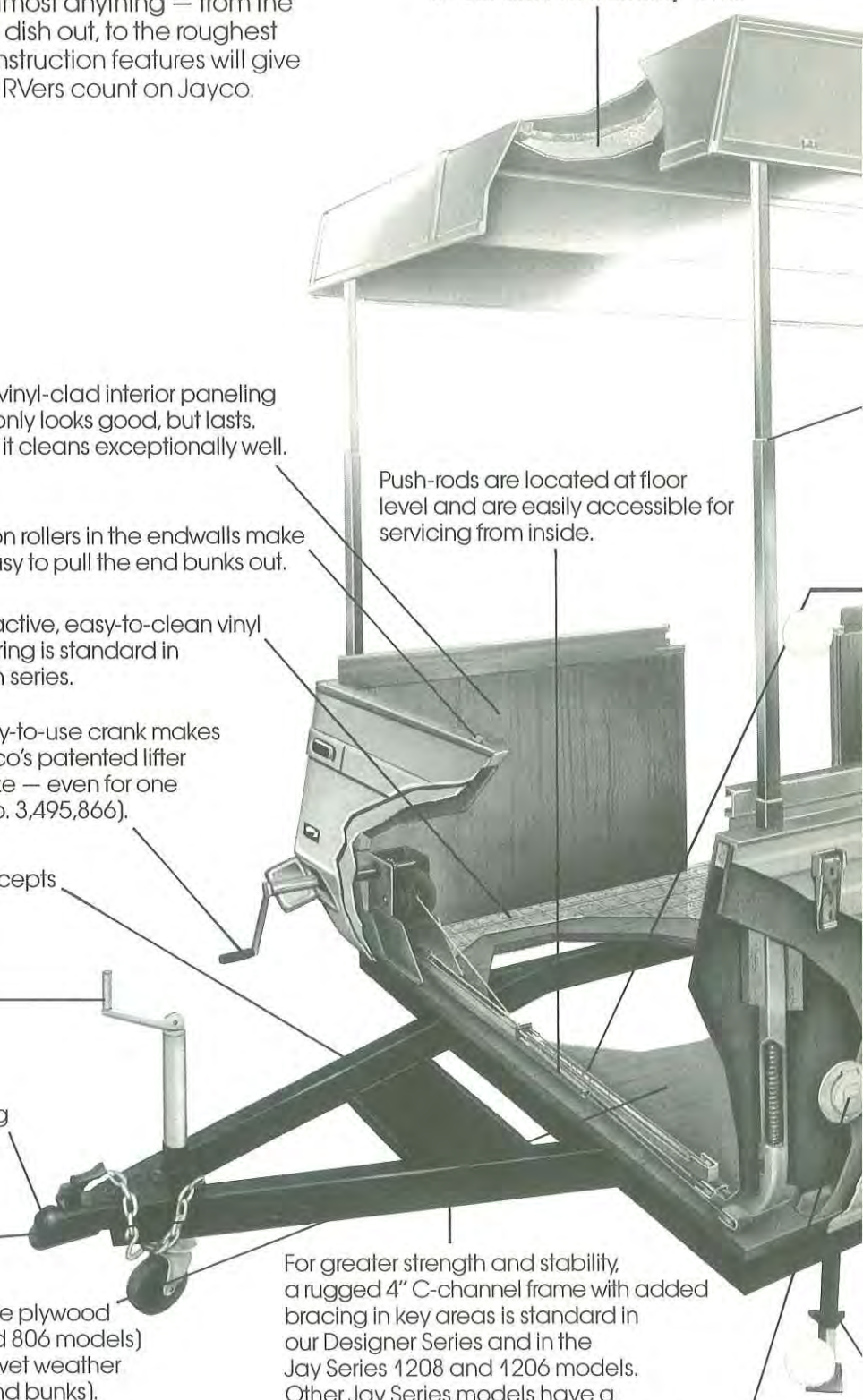
A 2" hitch ball coupler and safety chains are provided for your towing convenience.

This cap protects the electric inlet that receives the wiring harness from the tow vehicle.

The 5/8"-thick exterior-grade plywood floor (1/2" on J Series 705 and 806 models) is fully treated to withstand wet weather conditions (as are the 1/2" end bunks). The floor is protected with a **5-Year Limited Warranty***.

For greater strength and stability, a rugged 4" C-channel frame with added bracing in key areas is standard in our Designer Series and in the Jay Series 1208 and 1206 models. Other Jay Series models have a tough 3" C-channel. This frame is protected by a **5-Year Limited Warranty***.

All models are wired for 110V electric hookup and come with a 25-foot power cord.



Jayco's domed roof allows proper water runoff. And because the curvature runs multi-directionally, the roof is strong — able to withstand the weight of an air conditioner.

Nylon bushings in the lifter posts permit smooth operation and reduce wear.

The lifter system cables and the winch are fully enclosed above the floor to protect against salt, road tar, and dirt.

Interlocking aluminum slider tracks brace the end bunks and allow for smooth setup.

The city water fill outlet provides running water without pumping at campsites offering water hookup.

An outside water fill makes it easy for you to fill the water tank in areas where city water hookup isn't available.

Permanently attached and self-storing stabilizing jacks are standard.

Jayco's own designed and constructed heavy-duty duck canvas (not shown) is weatherproof, reinforced with double-stitching, and comes in one piece, which allows for fewer troublesome zippers . . . and fewer openings for bugs to enter. Vinyl end bunk roofs resist water seepage.

The grey-water outlet drains water from the sink. The cap is attached so it can't be misplaced.

The heavy-duty welded safety bumper — which runs the width of the unit — is actually an extension of the frame itself, providing greater protection than a bolt-on or a split bumper.

Double sidewall construction lends extra durability and insulation.

Galvanized steel wheel wells resist the corrosion effects of road salts, water, and chemicals.

Open wheel wells allow for easy tire changing and better axle/bearing ventilation.

The Designer Series exterior is attractive, dent- and scratch-resistant fiberglass. The Jay Series is rugged aluminum.

Easy Setup Lifter System



1. Before you begin, be sure to position the fold-down's permanently attached stabilizing jacks. They swing down into place easily. And, because they're permanently attached, there's no risk of leaving them behind. Note: Do not level the unit until it is completely set up.



2. Unlatch the roof. Then open the hatch at the front of the unit, insert the crank handle, and turn it. As you do, the roof will rise almost effortlessly. Unlike some fold-downs, there are no awkward outside arms to contend with. And a built-in brake mechanism practically eliminates the danger of free-fall.



3. Once the roof is up, pull out the end bunks and position the canvas. Special tracks with rollers make the end bunks virtually glide into place.



4. Insert the support bars under the end bunks to give them extra strength and stability.



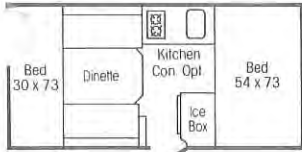
5. Now go inside the unit, unfold the upper screen door and frame from the ceiling, attach the door to the frame with Jayco's simple, ingenious double hinge, and insert the upperwall canvas into the groove around the door frame. This interlocking groove system holds the canvas in place much more securely than the Velcro fasteners used on some other fold-downs. Then insert the bunk end canvas support bars.



Once the unit is completely set up in this manner, you can then level it by means of the stabilizing jacks. And that's all there is to setup! You're ready to enjoy the living in a Jayco fold-down camping trailer. And remember: Your Jayco lifter system is protected by a Lifetime Limited Warranty. See your Jayco dealer for details!



Jay Series Floorplans



Jay Series 705

Specifications

Travel length	11'4"
Campsite length	14'10"
Approximate travel height	49½"
Approximate campsite height	97½"
Exterior width	79"
Approximate dry weight with standard equipment	895 lbs.
Axle weight	800 lbs.
Cargo capacity	605 lbs.
Approximate dry hitch weight	95 lbs.
Hitch ball height	15"
Tire size	5.70 x 8

Special Features

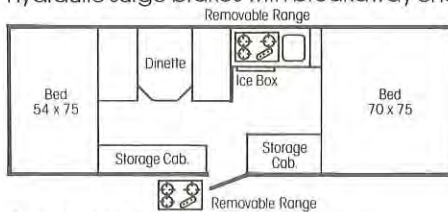
12-volt interior lights (#)	1
Self-storing stabilizing jacks (#)	2 (4 opt.)

Optional Features

Kitchen option includes:

- Galley
- Stainless steel sink
- 5-gallon fresh water tank with galley hand pump
- 2-burner LP gas stove
- City water hook-up
- 12-volt electric system with 6-amp. convertor
- 20# LP gas tank with regulator

Awning size	7'
Electric brakes	
Hydraulic surge brakes with breakaway chain	



Jay Series 1006

Specifications

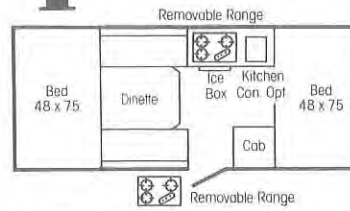
Travel length	14'8"
Campsite length	21'6"
Approximate travel height	51½"
Approximate campsite height	99½"
Exterior width	81"
Approximate dry weight with standard equipment	1305 lbs.
Axle weight	1150 lbs.
Cargo capacity	835 lbs.
Approximate dry hitch weight	155 lbs.
Hitch ball height	16½"
Tire size	5.30 x 12
Fresh water tank with galley hand pump	5 gal.

Special Features

LP gas stove (# burners)	3
Removable range	
12-volt interior lights (#)	2
Self-storing stabilizer jacks (#)	4
Enclosed portable toilet compartment	

Optional Features

Awning size	10'
Electric brakes	
10-gal. water system	
Hydraulic surge brakes with breakaway chain	



Jay Series 806

Specifications

Travel length	12'8"
Campsite length	17'4"
Approximate travel height	49½"
Approximate campsite height	97½"
Exterior width	81"
Approximate dry weight with standard equipment	995 lbs.
Axle weight	885 lbs.
Cargo capacity	775 lbs.
Approximate dry hitch weight	110 lbs.
Hitch ball height	15"
Tire size	5.70 x 8

Special Features

12-volt interior lights (#)	1
Self-storing stabilizing jacks (#)	2 (4 opt.)

Optional Features

Kitchen option includes:

- Galley
- Stainless steel sink
- 5-gallon fresh water tank with galley hand pump
- 2-burner LP gas stove
- City water hook-up
- 12-volt electric system with 6-amp. convertor
- 20# LP gas tank with regulator

Awning size	8'
Electric brakes	
10-gal. water system	
Hydraulic surge brakes with breakaway chain	



Jay Series 1008 SG

Specifications

Travel length	14'8"
Campsite length	21'6"
Approximate travel height	51½"
Approximate campsite height	99½"
Exterior width	81"
Approximate dry weight with standard equipment	1270 lbs.
Axle weight	1115 lbs.
Cargo capacity	865 lbs.
Approximate dry hitch weight	155 lbs.
Hitch ball height	16½"
Tire size	5.30 x 12
Fresh water tank with galley hand pump	5 gal.

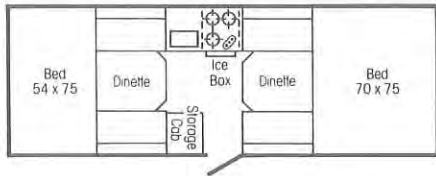
Special Features

LP gas stove (# burners)	3
12-volt interior lights (#)	2
Self-storing stabilizer jacks (#)	4
Enclosed portable toilet compartment	

Optional Features

Awning size	10'
Electric brakes	
10-gal. water system	
Wardrobe	
Extra table & bracket	
Hydraulic surge brakes with breakaway chain	

Jay Series Floorplans



Jay Series 1008 DD

Specifications

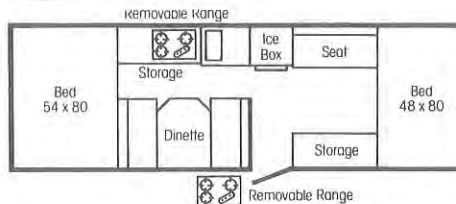
Travel length	14'8"
Campsite length	21'6"
Approximate travel height	51½"
Approximate campsite height	99½"
Exterior width	81"
Approximate dry weight with standard equipment	1280 lbs.
Axle weight	1125 lbs.
Cargo capacity	860 lbs.
Approximate dry hitch weight	155 lbs.
Hitch ball height	16½"
Tire size	5.30 x 12
Fresh water tank with galley hand pump	5 gal.

Special Features

LP gas stove (# burners)	3
12-volt interior lights (#)	2
Self-storing stabilizer jacks (#)	4

Optional Features

Awning size	10'
Electric brakes	
10-gal. water system	
Hydraulic surge brakes with breakaway chain	



Jay Series 1206

Specifications

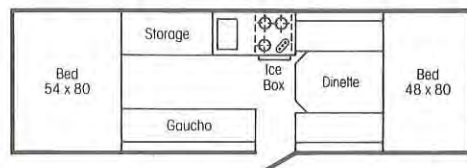
Travel length	16'10"
Campsite length	21'8"
Approximate travel height	55¾"
Approximate campsite height	96¾"
Exterior width	85"
Approximate dry weight with standard equipment	1600 lbs.
Axle weight	1425 lbs.
Cargo capacity	780 lbs.
Approximate dry hitch weight	175 lbs.
Hitch ball height	14"
Tire size	20 x 8:00 x 10
Fresh water tank with galley hand pump	11 gal.

Special Features

LP gas stove (# burners)	3
Removable range	
12-volt interior lights (#)	2
Self-storing stabilizer jacks (#)	4
Enclosed portable toilet compartment	
Hydraulic surge brakes with breakaway chain	

Optional Features

Awning size	12'
Overhead kitchen cabinet	
Wardrobe	
Extra table & bracket	



Jay Series 1208

Specifications

Travel length	16'10"
Campsite length	21'8"
Approximate travel height	55¾"
Approximate campsite height	96¾"
Exterior width	85"
Approximate dry weight with standard equipment	1575 lbs.
Axle weight	1400 lbs.
Cargo capacity	805 lbs.
Approximate dry hitch weight	175 lbs.
Hitch ball height	14"
Tire size	20 x 8:00 x 10
Fresh water tank with galley hand pump	11 gal.

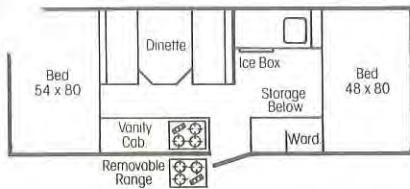
Special Features

LP gas stove (# burners)	3
12-volt interior lights (#)	2
Self-storing stabilizer jacks (#)	4
Enclosed portable toilet compartment	
Hydraulic surge brakes with breakaway chain	

Optional Features

Awning size	12'
Overhead kitchen cabinet	
Wardrobe	
Extra table & bracket	

Designer Series Floorplans



Thrush

Specifications

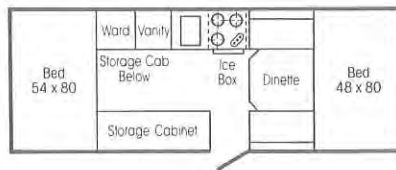
Travel length	14'9"
Campsite length	19'8"
Approximate travel height	55"
Approximate campsite height	96"
Exterior width	85"
Approximate dry weight with standard equipment	1550 lbs.
Axle weight	1390 lbs.
Cargo capacity	810 lbs.
Approximate dry hitch weight	160 lbs.
Hitch ball height	14¾"
Fresh water tank capacity	11 gal.

Special Features

LP gas stove (# burners)	3
Removable range	
12-volt electric system with convertor	10 amp.
12-volt interior lights (#)	3

Optional Features

Awning size	10'
Hydraulic surge brakes with breakaway chain	



Dove 6

Specifications

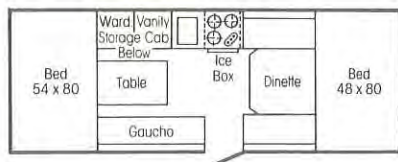
Travel length	14'9"
Campsite length	19'8"
Approximate travel height	55"
Approximate campsite height	96"
Exterior width	85"
Approximate dry weight with standard equipment	1555 lbs.
Axle weight	1395 lbs.
Cargo capacity	805 lbs.
Approximate dry hitch weight	160 lbs.
Hitch ball height	14¾"
Fresh water tank capacity	11 gal.

Special Features

LP gas stove (# burners)	3
12-volt electric system with convertor	10 amp.
12-volt interior lights (#)	3

Optional Features

Awning size	10'
Hydraulic surge brakes with breakaway chain	



Dove 8

Specifications

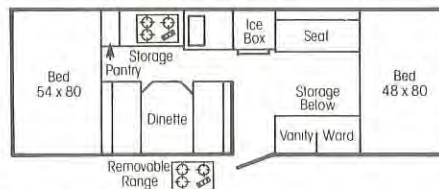
Travel length	14'9"
Campsite length	19'8"
Approximate travel height	55"
Approximate campsite height	96"
Exterior width	85"
Approximate dry weight with standard equipment	1545 lbs.
Axle weight	1385 lbs.
Cargo capacity	815 lbs.
Approximate dry hitch weight	160 lbs.
Hitch ball height	14¾"
Fresh water tank capacity	11 gal.

Special Features

LP gas stove (# burners)	3
12-volt electric system with convertor	10 amp.
12-volt interior lights (#)	3
Comfort wedge gauchio	

Optional Features

Awning size	10'
Hydraulic surge brakes with breakaway chain	



King 6 SD

Specifications

Travel length	16'10"
Campsite length	21'8"
Approximate travel height	55¾"
Approximate campsite height	96¾"
Exterior width	85"
Approximate dry weight with standard equipment	1795 lbs.
Axle weight	1620 lbs.
Cargo capacity	780 lbs.
Approximate dry hitch weight	175 lbs.
Hitch ball height	14"
Fresh water tank capacity	16 gal.

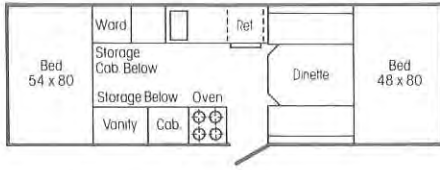
Special Features

LP gas stove (# burners)	3
Removable range	
12-volt electric system with convertor	10 amp.
12-volt interior lights (#)	4
Hydraulic surge brakes with breakaway chain	

Optional Features

Awning size	12'
Extra table & bracket	

Designer Series Floorplans



King Deluxe

Specifications

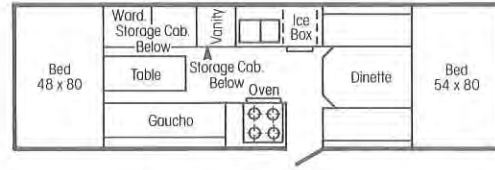
Travel length	16'10"
Campsite length	21'8"
Approximate travel height	55¾"
Approximate campsite height	96¾"
Exterior width	85"
Approximate dry weight with standard equipment	1890 lbs.
Axle weight	1715 lbs.
Cargo capacity	690 lbs.
Approximate dry hitch weight	175 lbs.
Hitch ball height	14"
Fresh water tank capacity	20 gal.

Special Features

LP gas stove (# burners)	4 w/oven
12-volt electric system	20 amp.
Demand water pump, 12-volt	
Hot and cold mixing faucet	
12-volt interior lights (#)	4
Hydraulic surge brakes with breakaway chain	
3-gallon water heater	
LP gas/electric refrigerator	2 cu. ft.

Optional Features

Awning size	12'
Recirculating toilet	



Cardinal

Specifications

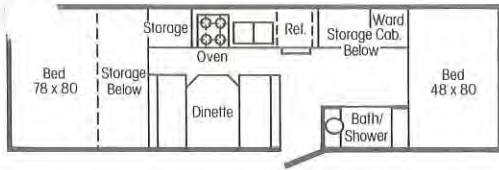
Travel length	18'10"
Campsite length	23'8"
Approximate travel height	55¾"
Approximate campsite height	96¾"
Exterior width	85"
Approximate dry weight with standard equipment	2155 lbs.
Axle weight	1970 lbs.
Cargo capacity	1175 lbs.
Approximate dry hitch weight	185 lbs.
Hitch ball height	14"
Fresh water tank capacity	20 gal.

Special Features

LP gas stove (# burners)	4 w/oven
12-volt electric system with convertor	10 amp.
12-volt interior lights (#)	4
Hydraulic surge brakes with breakaway chain	
Comfort wedge gaucho	

Optional Features

Awning size	14'
Recirculating toilet	
Deluxe Option Package (includes water heater, demand water pump, hot & cold mixing faucet)	



Cardinal SD

Specifications

Travel length	18'10"
Campsite length	23'8"
Approximate travel height	55¾"
Approximate campsite height	96¾"
Exterior width	85"
Approximate dry weight with standard equipment	2260 lbs.
Axle weight	2075 lbs.
Cargo capacity	1070 lbs.
Approximate dry hitch weight	185 lbs.
Hitch ball height	14"
Fresh water tank capacity	20 gal.

Special Features

LP gas stove (# burners)	4 w/oven
12-volt electric system with convertor	20 amp.
12-volt interior lights (#)	4
Demand water pump, 12-volt	
Hot and cold mixing faucet	
Hydraulic surge brakes with breakaway chain	
Shower	
3-gallon water heater	
12-volt/electric refrigerator	2 cu. ft.
Electric Dinette Porta Potti	

Optional Features

Awning size	14'
-------------------	-----

Jafari

International
Travel Club



A lifetime of good times starts with your new Jayco RV. And the good times get even better when you share them with other camping families.

That's why we encourage you, as we do all Jayco owners, to join your local chapter of the Jayco Jafari International Travel Club. As soon as you do, you'll be eligible to participate in the fun and adventure of many specially planned local and regional outings. You'll also be able to join the numerous Jafari excursions that are scheduled each year — excursions that take you to fascinating places all around the country.

Ask your dealer about the Jafari chapter, or "flight," as it's called, in your area. Or write Jayco at its corporate address shown below.

LIMITED WARRANTY. Jayco, Inc., warrants to the original purchaser of every Jayco fold-down camping trailer that the roof, floor, and frame are free from substantial defects in materials and workmanship for three (3) years on labor and five (5) years on parts, from the date of purchase under normal use and service. Other components are warranted for twelve (12) months for parts and labor from the date of purchase. This warranty does not apply to any defect in the aesthetics or physical appearance of the unit, nor to normal deterioration of the soft trim and appearance items due to wear and exposure. A copy of this limited warranty is available for inspection upon request from your Jayco dealer. Separate manufacturers warranties cover various components used in Jayco products.

LIFTER SYSTEM LIFETIME LIMITED WARRANTY.

Jayco, Inc., warrants to the original purchaser of every Jayco fold-down camping trailer that the lifter system is free from substantial defects in materials and workmanship for the lifetime of the fold-down camping trailer. A copy of this limited warranty is available for inspection upon request from your Jayco dealer.

PLEASE NOTE: All illustrations and specifications contained in this brochure are based on the latest product information available at the time of publication approval. Because Jayco continually seeks to improve its products, and also because of changes in the availability of various components, Jayco reserves the right to make changes at any time in prices, colors, materials, equipment, specifications, and models, and to discontinue models without notice or obligation. Components or parts may have been manufactured at times other than the model year indicated. Also, pictures in this brochure may show optional equipment available at extra cost. Recreation vehicles built for sale in Canada may differ somewhat to conform to Canadian codes; see your dealer for details.



This is the site where Jayco manufactures its world-renowned RVs. The company today ranks fourth in retail registrations of towable recreation vehicles in the United States.

This dealer can give you further information and prices:



Jayco[®]
SHARE THE PRIDE!

Jayco, Inc.
P.O. Box 460
Middlebury, IN 46540

