



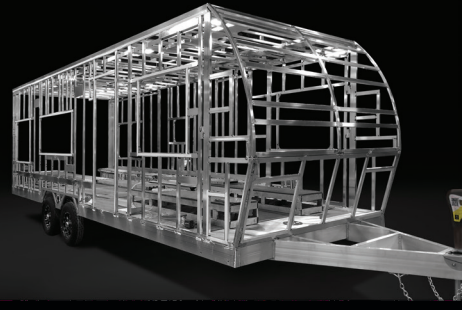
PLA

2024 TRAVEL TRAILER TOY HAULERS 700 SERIES



ATCtrailers.com

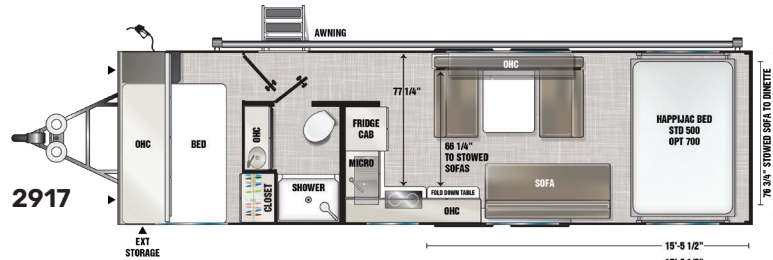
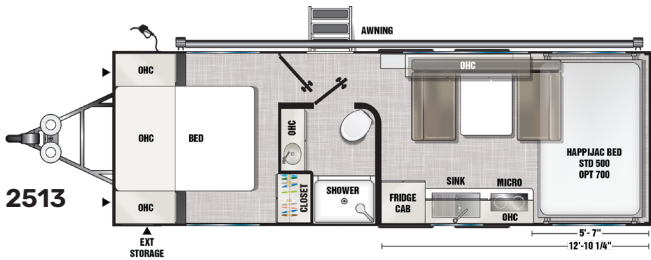
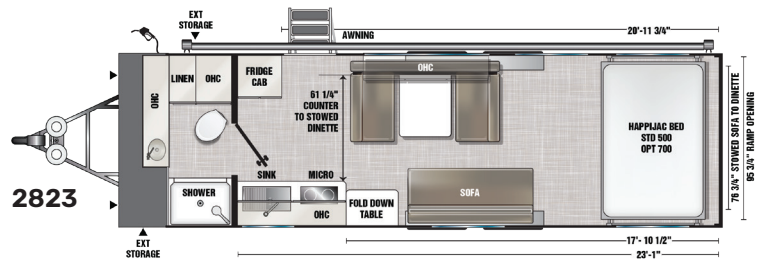
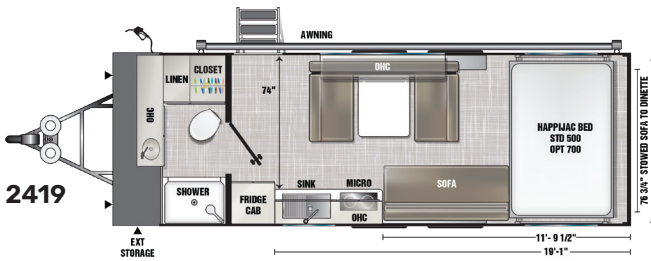
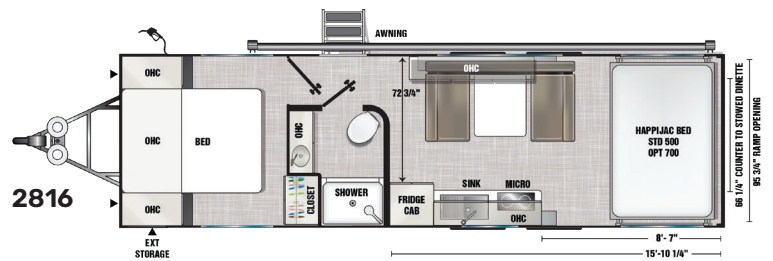
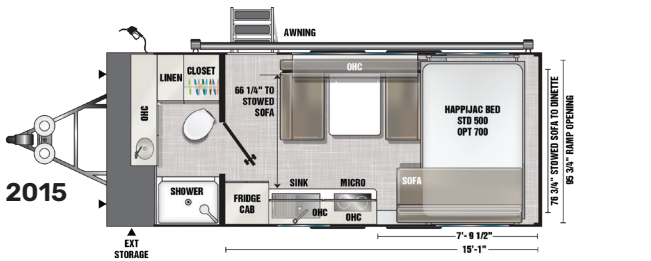
PLA[®] Designed And Built For Life



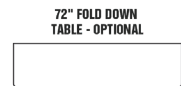
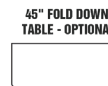
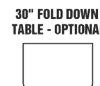
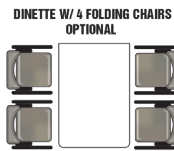
PLÅ[®] toy haulers are built to last with a fully integrated aluminum frame. The six-sided "welded box" has no fasteners to loosen over time and features a one-piece aluminum roof. Unlike most other toy haulers, there is no wood in our construction to rot and deteriorate over time. PLÅ toy

haulers are lighter and stronger than other conventionally built models and designed to carry your heavy toys. Our sleek, modern interiors are easy to clean – spray the flooring with a garden hose without worry about rot or rust. Our 700 Series includes configurable furniture on a track system, along with electric stabilizer jacks for easy leveling. There's plenty of room in the garage area to accommodate your ATVs, motorcycles and even a full size vehicle. Enjoy your next adventure, wherever the road leads, with versatile PLÅ toy haulers.

Details at ATCtrailers.com



These items can be moved anywhere in the 700 Series garage area





MODEL	2015	2419	2513	2816	2823	2917
Exterior Length (Includes hitch)	26' 0"	30' 0"	31' 0"	34' 0"	34' 0"	35' 6"
Exterior Height (Includes A/C)	11' 3"	11' 3"	11' 3"	11' 6"	11' 6"	11' 6"
Exterior Width	8' 6"	8' 6"	8' 6"	8' 6"	8' 6"	8' 6"
Rear Opening Width	96"	96"	96"	96"	96"	96"
Rear Opening Height	90"	90"	90"	90"	90"	90"
GVWR	11,440 lbs	11,440 lbs	11,440 lbs	13,200 lbs	13,200 lbs	13,200 lbs
Estimated Base Model Weight	5000 lbs	6000 lbs	6400 lbs	7400 lbs	7000 lbs	7600 lbs
Estimated Hitch Weight w/o Generator	650 lbs	700 lbs	900 lbs	950 lbs	750 lbs	975 lbs
Estimated Hitch Weight w/Generator	950 lbs	1000 lbs	1200 lbs	1250 lbs	1050 lbs	1275 lbs
Estimated Carry Capacity	6440 lbs	5440 lbs	5040 lbs	5800 lbs	6200 lbs	5600 lbs
Axle Size	2 x 5200 lbs	2 x 5200 lbs	2 x 5200 lbs	2 x 6000 lbs	2 x 6000 lbs	2 x 6000 lb
Tire Size	225/75R15E	225/75R15E	225/75R15E	235/80R16E	235/80R16E	235/80R16E
Fresh Water Capacity	100 gal	100 gal	100 gal	100 gal	100 gal	100 gal
Gray Water Capacity	45 gal	45 gal	45 gal	45 gal	45 gal	45 gal
Waste Water Capacity	45 gal	45 gal	45 gal	45 gal	45 gal	45 gal
Water Heater LP Gas/Electric	6 gal	6 gal	6 gal	6 gal	6 gal	6 gal
Gasoline Capacity	36 gal	36 gal	36 gal	36 gal	36 gal	36 gal
LP Capacity	40 lbs	40 lbs	40 lbs	40 lbs	40 lbs	40 lbs
Refrigerator	10 cu ft	10 cu ft	10 cu ft	10 cu ft	10 cu ft	10 cu ft
Cooktop/Stove	2 Burner Gas	2 Burner Gas	2 Burner Gas	2 Burner Gas	2 Burner Gas	2 Burner Gas
Furnace	25,000 BTU	25,000 BTU	25,000 BTU	25,000 BTU	25,000 BTU	25,000 BTU
Awning	16 ft	20 ft	22 ft	25 ft	25ft	25 ft



STANDARD FEATURES
EXTERIOR

- Electric Tongue Jack
- Power Awning w/ Light Strip
- Entry Door w/ Tinted Window & Friction Hinge
- Large Stainless Steel Fold-out Grab Handle
- Fold-out Adjustable Step
- Cableless Rear Ramp Door w/ Non-slip Tread
- Large Exterior Storage w/ 3 Access Doors
- Fuel Filling Station
- Tongue Storage Cover
- Loading Lights at Ramp Door
- RVIA Seal

TIRES/WHEELS

- Spare Tire on Steel Wheel
- Hide-A-Spare - EZ Access

INTERIOR

- 7' 6" Interior Height
- Fiberglass Batten Insulation in Attic (R-11)
- Blackout Roller Shades
- (1) Dinette w/ Benches (Sleeper)
- (1) Sofa (Sleeper) (N/A 2513 & 2816)
- All-Aluminum Cabinets & Drawers Throughout (No Wood)

ELECTRICAL

- Energy Package 1000 (200 Watt Solar Panel, 1000 Watt Inverter, 30 Amp MPPT Charge Controller, 100 Amp Hours of Battery, Second Battery Prep)
- Generator Prep
- High Definition 120v Smart TV
- TV Prep in Bedroom (2513, 2816 & 2917)
- TV Prep Exterior
- HD Digital TV Antenna w/ WiFi Prep
- Stereo AM/FM/Bluetooth w/ Interior & Exterior Speakers
- Touchscreen User Control Panel
- Back-up Camera Prep
- 120v USB Power Outlets Throughout

PLUMBING

- DSI LP Gas/Electric Water Heater
- Ducted LP Furnace
- 12v Water Pump w/ Winterizing Tap
- City Water Hook-up w/ Fill
- 20' Sewer Hose w/ Storage Tube
- Waste (Black) Tank Flush
- Exterior Water Spigot

KITCHEN

- Convection Microwave
- Farmhouse Single Bowl Stainless Steel Sink
- Sink Insert 1/2 Solid Surface, 1/2 Stainless Steel Grate
- Matte Black Faucet w/ Pull-Out Sprayer
- 12v Refrigerator
- Flush Mount LP Cooktop
- Decorative Backsplash

BATHROOM

- Porcelain Toilet
- 1-Piece Fiberglass Shower w/ Extend-A-Shower Curtain
- Single Lever Shower Sprayer w/ Shutoff
- Residential Size Medicine Cabinet w/ Mirror Doors
- Stainless Steel Sink
- Matte Black Metal Faucet
- Decorative Backsplash
- Full Length Mirror on Door
- **BEDROOM (2513, 2816 & 2917)**
- 60" x 80" Residential Queen Bed w/ Storage
- Decorative Reading Lamps

ABOVE & BEYOND PACKAGE (Included)

- Full Perimeter Welded Aluminum Frame (6 Sides Welded Together, No Wood)
- Axles - Torsion, EZ Lube, w/ Self-Adjusting Brakes
- 1-Piece Aluminum Roof
- 4,000 lb Rated Ramp Door
- Low Angle Ramp for Easier Loading
- Extruded Aluminum Floor - Garage & Kitchen w/ Removable Woven Vinyl Fitted Floor Covering
- Composite Flooring in Bed, Bath, Hall w/ Woven Vinyl Floor Covering (No Wood)
- Dimmable Ceiling Lights Throughout
- Composite Wall Panels (No Wood)
- Residential Solid Surface Countertops
- 50 Amp Distribution Panel - 120v Output w/ 12v Converter
- 50 Amp Shore Cord & Motorbase Plug
- Heated Lithium Battery

ALL WEATHER PROTECTION PACKAGE

- (Included)
- Enclosed Underbelly with Radiant Barrier
- 12V Heat Pads on Water and Waste Tanks
- 12V Heat Pads on Water Lines Under Floor
- Ducted Air Conditioning
- Ducted Furnace

700 SERIES PACKAGE

- (Included)
- Happijac Bed- Residential Queen, w/ Ladder
- Aluminum Exterior - Choice of: Silver, White, Charcoal, Pewter, or Black
- 12v Roof Vents w/ Remote and Built-in Low Profile Rain Guard
- Black Exterior Trim
- Frameless Dual Pane Tinted Windows
- (2) Scene Lights (Curb Side)
- Interior Wall Color - Choice of: Beige or Gray

- Cabinets - Choice of: Silver, White, Charcoal, Pewter, or Black
- Countertops - Venato Sparkle
- Upgraded E.P.S. Wall Insulation (R-7)
- Airline Track Tie Down System - Recessed in Floor
- Configurable Furniture Track System for Dinettes, Sofas, Tables (Ability to Change Floorplan)
- Adjustable Shelving in Cabinets (Where Applicable)
- Goodyear Tires on Premium Aluminum Wheels
- Skirting (Ground Effects)
- Skid Plates

700 SERIES OPTIONAL UPGRADES

- Dinette w/ 4 Folding Chairs (IPO Sleeper Benches)
- King Bed (IPO Queen) (2513 & 2816 Only)
- Instant Water Heater - LP (IPO 6 Gallon Gas/Electric)
- **Energy Package 2000** (400 Watts Solar, 2000 Watt Inverter, 30 Amp MPPT Charge Controller, 200 Amp Hours Heated Lithium Battery - IPO 1000)
- **Energy Package 3000** (800 Watts Solar, 3000 Watt Inverter, 60 Amp Charge Controller, 540 Amp Hours Heated Lithium Battery - IPO 1000)

700 SERIES OPTIONAL ADDS

- Deck Package (Railing w/ Steps, Vinyl Roll-Up Screen Wall at Rear) (N/A w/ 3-Season Room)
- Enclosed 3-Season Patio Room w/ Steps (N/A w/ Deck Package)
- Vinyl Roll-Up w/ Windows & Screens at Rear
- Roof Storage Platform w/ Ladder
- Ladder (To Roof)
- Power Awning w/ Scene Lights Road Side

- Exterior Shower
- Happijac Sofa Beds (Under Queen Bed)
- 30", 45", or 72" Fold Down Table (Fits in Furniture Track System)
- Additional 6' Sleeper Sofa(s)
- Pedestal Chair(s) Recline & Swivel
- Overhead Cabinet(s) in Garage
- Single Or Triple Stud Tie Downs for Airline Track
- TV in Bedroom
- 5.5kw Generator
- Battery(s) - Heated Lithium 100 Amp Hour
- Back-Up Camera
- Cell Signal Booster
- Winterization (Mandatory Oct. 1- Apr. 1)

Go Your Own Way™

ATCtrailers.com

The depictions of trailers in this brochure are for general information purposes only as to the trailers manufactured by ATC during the current model year. Since we continually strive to improve our products, actual products may differ and prices and specifications are subject to change without notice. Product information, specifications, photography, and promotions in this brochure may contain some features that are optional on your trailer. All capacities are approximate and dimensions are nominal. Trailer availability may be limited.
©2023 ATC | Part Number 0025331 | 2023-07-27