

2018 FLEETWOOD FLAIR LXE/FLAIR

FLAIR LXE/FLAIR

2018 CLASS A GAS



 **FLEETWOOD RV**
REV GROUP

FLAIR

The 2018 Fleetwood Flair is all about the open road. Offering three floorplans to choose from, each configuration boasts unique standards and options to fit your trip. Full basement storage means you'll leave nothing behind, while the high-gloss cabinetry throughout the coach is perfect for storing all of your residential needs. And, if you're planning to spend more time outdoors, then the power awning with LED light strip and exterior entertainment center are campground ready.

TOP FEATURES

- High Gloss Cabinetry and Doors w/Hidden Hinges
- Bedroom LED TV
- High Gloss Gel Vetrolite® Ultra-Thick Fiberglass Skin (No Wood Substrate)
- Intense Halogen Projector Headlamps
- Side Swing Diesel Style Aluminum Luggage Doors
- Power Awning w/LED Light Strip
- Back-Up & Side-View Camera Package
- Exterior Entertainment Center
- Tinted Frameless Windows
- Soft-Touch Vinyl Ceiling w/Ducted Air
- Full Basement Storage

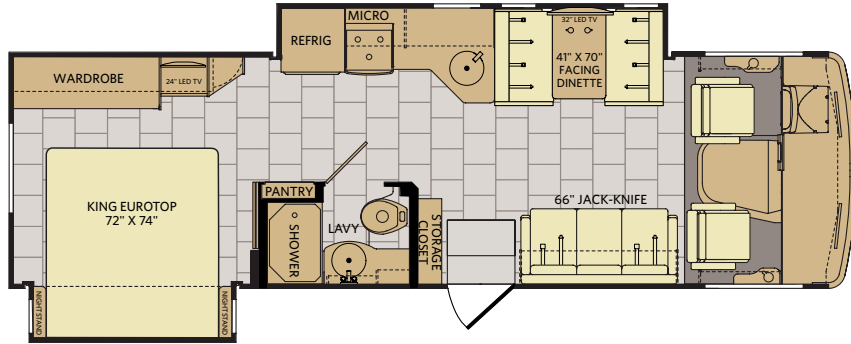


Flair 30E is shown in Infinity Sterling décor and High-Gloss Nottingham Cherry cabinetry.

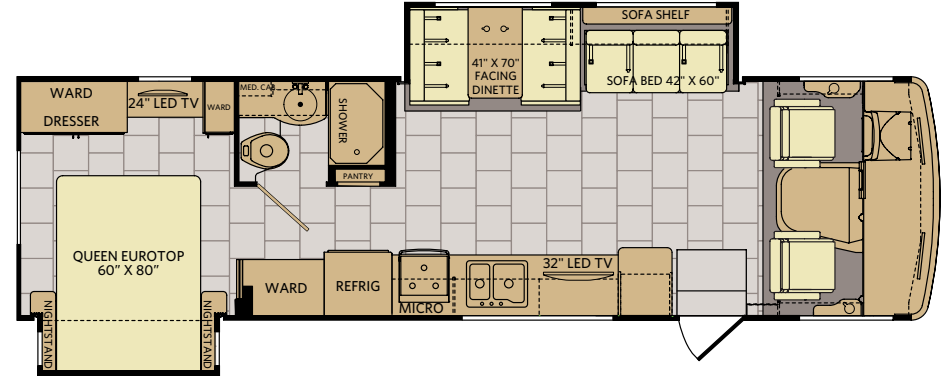


FLAIR FLOORPLANS

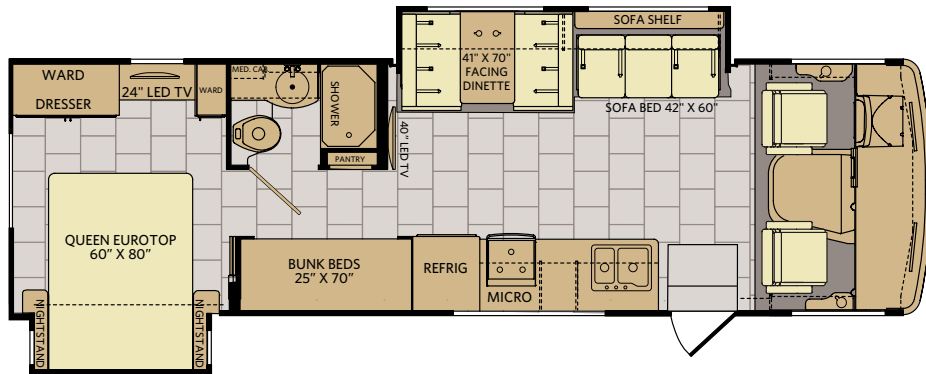
30P Options: 113, 186



31A Options: 186



31E Options: 097, 157, 186



Available Options



OPT. 097
BUNK AREA
19" LED TV



OPT. 113
3-BURNER
COOKTOP
W/OVEN



OPT. 157
DUAL
MONITORS

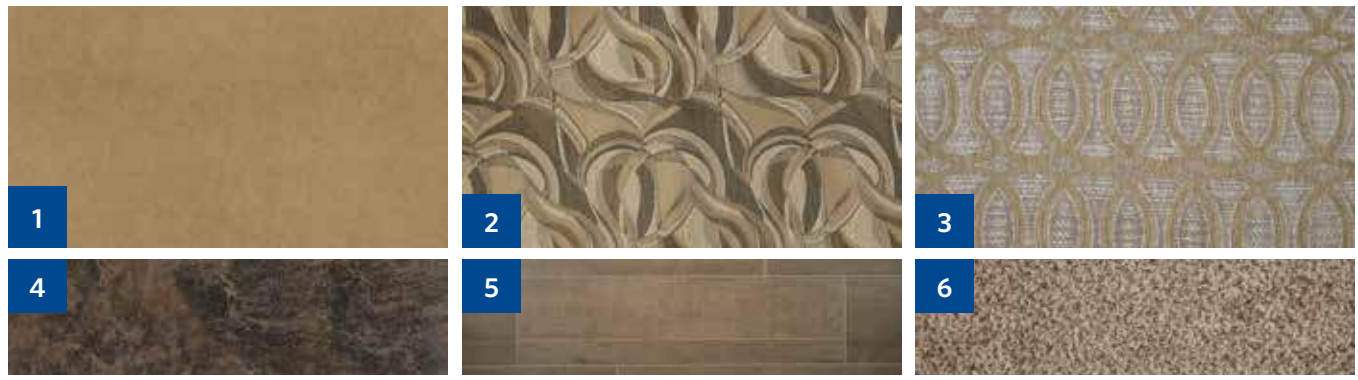


OPT. 186
DRIVER/PASSENGER
PEDESTAL TABLE

Autumn Wheat
High Gloss



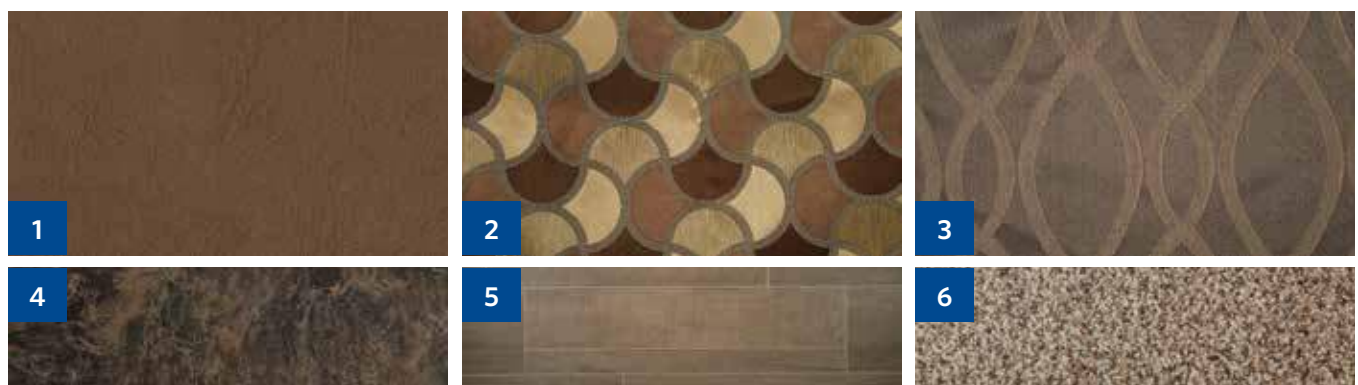
Infinity Sterling



Nottingham Cherry
High Gloss



Rum Raisin

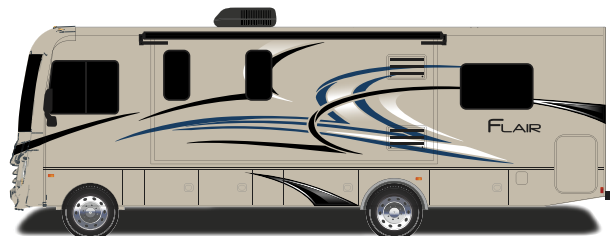


1 Sofa 2 Accent 3 Bedspread 4 Countertop 5 Flooring 6 Carpet

BRUSH



OXFORD



FLAIR LXE

Let's be honest, Fleetwood owners have a knack for drawing attention as they take our motorhomes down the road. The 2018 Flair LXE keeps up that status quo with its high-gloss gel Vetrolite® ultra-thick fiberglass skin (with no wood substrate) and premium full body paint optional upgrade. With access to an exterior entertainment center, a legless power awning with LED light strip and our ample full basement storage area, thanks to Fleetwood's raised space frame foundation, no journey is too long or too far.

TOP FEATURES

- High Gloss Cabinetry and Doors w/Hidden Hinges
- Bedroom LED TV
- High Gloss Gel Vetrolite® Ultra-Thick Fiberglass Skin (No Wood Substrate)
- Intense Halogen Projector Headlamps
- Side Swing Diesel Style Aluminum Luggage Doors
- Full Basement Storage
- Power Awning w/LED Light Strip
- Back-Up & Side-View Camera Package
- Exterior Entertainment Center
- Tinted Frameless Windows
- Soft-Touch Vinyl Ceiling w/Ducted Air
- Full Body Paint (Optional)
- Residential Refrigerator (Optional)

LXE PACKAGE

- Living Area Solid Surface Tops
- Tile Backsplashes
- Legless Awning w/LED Light Strip
- Upgraded REV Control Ryde™ and Handling System
- Auto Gen Start
- 1200W Inverter
- High Gloss Hardwood Ceiling Feature



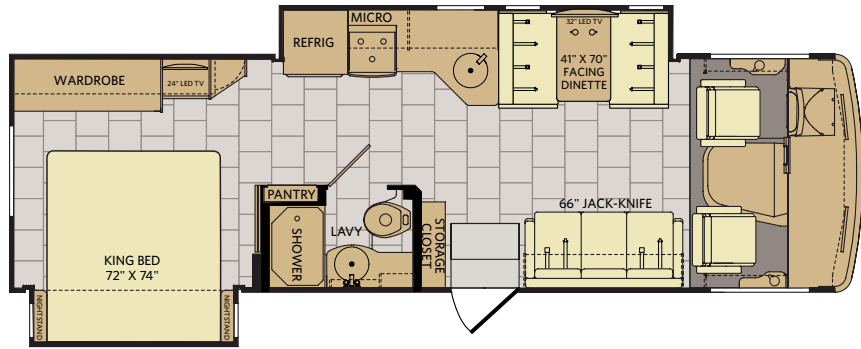
Flair LXE 31W is shown in Run Raisin décor and High-Gloss Autumn Wheat cabinetry.



FLAIR LXE FLOORPLANS & EXTERIOR OPTIONS

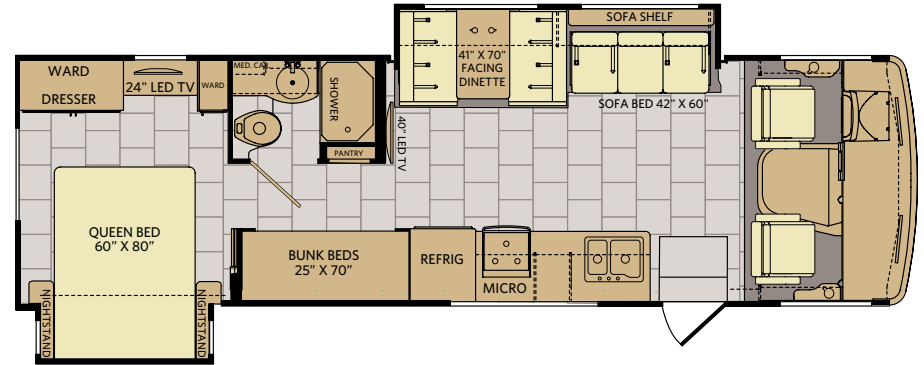
30U

Options: 113, 144, 186



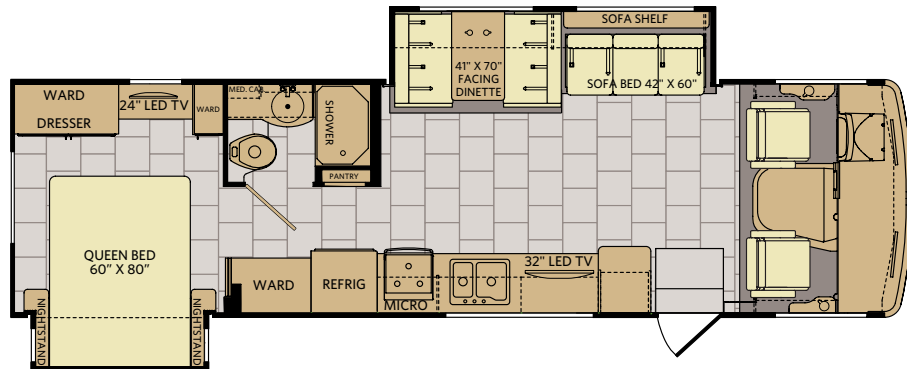
31B

Options: 097, 144, 157, 186



31W

Options: 144, 186



Available Options



OPT. 097
BUNK AREA
19" LED TV



OPT. 113
3-BURNER
COOKTOP
W/OVEN



OPT. 144
RESIDENTIAL
REFRIGERATOR



OPT. 157
DUAL
MONITORS



OPT. 186
DRIVER/PASSENGER
PEDESTAL TABLE

CRIMSON



INFINITY



SADDLE



FLAIR LXE DECOR & EXTERIOR OPTIONS

Autumn Wheat
High Gloss



Infinity Sterling



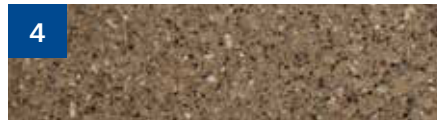
1



2



3



4



5



6

Nottingham Cherry
High Gloss



Rum Raisin



1



2



3



4



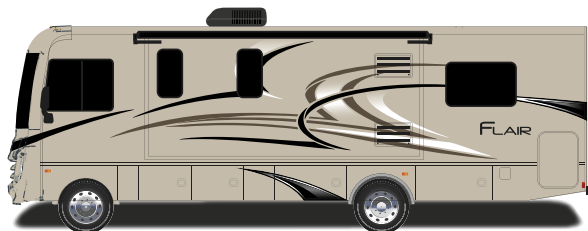
5



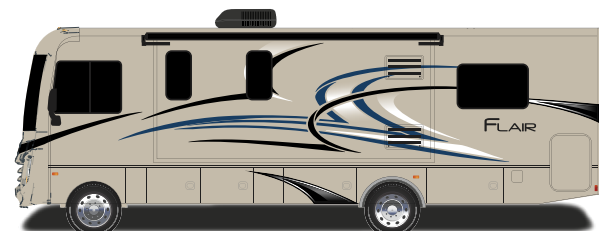
6

1 Sofa 2 Accent 3 Bedspread 4 Countertop 5 Flooring 6 Carpet

BRUSH



OXFORD



FLAIR/FLAIR LXE STANDARD & OPTIONS

FLAIR STANDARD & OPTIONS

INTERIOR THROUGHOUT

- 12V Water Pump, Demand Operation
- 15,000 Btu/h Ducted Air Conditioner w/Chill Grille
- 6 Gallon Propane Water Heater w/ Electronic Ignition
- AC/DC Load Center w/12V Converter/Battery Charger
- Auxiliary Batteries w/Disconnect Switch
- Central Monitor Panel
- Dedicated Full-Length, Metallic A/C Ducting
- Deluxe Roller Bearing, Full Extension Drawer Guides & Transit-Ship Locks
- Flat Interior Ceiling
- GFI Circuit Protection
- Hardwood Flat Panel Cabinet Doors w/ Euro Hinges
- Hide-A-Loft™ Drop Down Bed
- LED Interior Task Lighting
- Manual Night Shades in Living Room & Bedroom
- Ozite Lined Shelves in Overhead Cabinets
- Premium Constructed Furniture
- Soft-Touch Vinyl Ceiling w/Ducted Air
- Tuff-Pex™ Plumbing System
- Water Heater Bypass Valve
- Water Pump w/On/Off Switches at Lavy
- Whole-Coach Water Filtration System

OPTIONS

- CSA Package (Canadian Specs)**
- Satellite Radio (Subscription Required)
- King Stationary Satellite System
- 19" Bunk Area TV (31E)
- Dual Flat Panel Bunk Monitors (31E)

DRIVER CONVENIENCE

- (2) 12V Power Jack
- 3 Point Seat Belts at Driver & Front Passenger Seats
- Auxiliary Emergency Start Assist Switch on Dash
- Blind-Spot "Doggy" Window
- Cruise Control
- Driver/Passenger Reading Lights & Magazine Rack
- Driver/Front Passenger Soft-Touch Captain's Chairs w/Reclining Back/Slide Controls
- In-Dash AM/FM/Radio w/CD/DVD Player
- Power Windshield Privacy/Night Shade
- Radio Switch Main/Auxiliary Power
- Remote Heated Power Exterior Mirrors w/Turn Signals
- Side View Cameras

OPTIONS

- Driver/Passenger Center Table

SAFETY/CONVENIENCE

- 10 lb. ABC Fire Extinguisher
- Carbon Monoxide, Propane, & Smoke Detectors/Alarms
- Egress Window
- Exterior & Interior Entry Assist Handle
- Multiple Seatbelt Locations

LIVING ROOM

- 32" LED Wide-Screen TV w/Remote & DVD Player
- 40" LED Wide-Screen TV w/Remote & DVD Player (31E Only)
- Dream Dinette Table w/2 Cup Holders - Convertible for Sleeping

GALLEY

- 3 Burner Range w/High Output/Piezo Igniter w/Cooktop Cover
- Ceiling - Power Vent Fan
- Dometic® 6 cu. ft. Refrigerator/Freezer
- Laminate Countertops w/Bull Nose T-Molding Edge
- Convection Microwave Oven w/ Electronic Touch Pad
- Residential Size Double Bowl Sink (N/A 30P)
- Residential Size Single Bowl Sink (30P)

OPTIONS

- 3 Burner Range w/High Output/Piezo Igniter & Oven w/Cooktop Cover (30P)

BEDROOM

- 24" LED TV
- Bedspread w/Decorative Pillows, & Headboard
- Queen Bed w/Mattress
- Reading Lights in Bed Overhead Cabinet
- King Bed (30P)

BATHROOM

- Bath Door w/Residential Passage Lock
- Dometic China Bowl Toilet w/Hand Sprayer
- Glass Shower Door
- Hand Towel Rack
- Large Sink w/Residential Style Faucet
- Medicine Cabinet w/Wood
- Molded ABS Shower w/Surround
- Shower Head w/Flexible Hose Extension
- Skylight/Roof Vent w/12V Fan

EXTERIOR THROUGHOUT

- Aluminum Bus-Style Side Swing Luggage Doors
- Aluminum Extruded Slide Ramps
- Gel coat w/Vinyl Graphics
- Dryseal™ Edge Coating (Water-Wicking Wall Edge Coating)

EXTERIOR THROUGHOUT

- Dual 6V Deep Cycle Auxiliary Batteries
- Exterior Entertainment Center
- Flexible Shower Hose & Faucet in Utility Compartment
- High Gloss Smooth Fiberglass Exterior
- Intense Halogen Projector Headlamps w/LED Accents
- Interlocking Aluminum Luggage Doors
- Large 1" (Inner Diameter) Water Tank Drain
- Onan® 4.0kW MicroQuiet Generator
- Power Awning w/LED Lighting
- Power Electric Step
- Rear Ladder
- Seamless Beltline Trim
- Sewer Hose Storage in Bumper
- Pre-wired for Solar Panel Connection
- Stainless Steel Wheel Simulators
- Tapered Slideout Box Tops & Debris Awnings
- Tinted Frameless Flush-Mounted Windows
- Toilet Tank San-T-Flush™ System
- Trailer Hitch w/7 Pin Electrical Hook-Up
- Tuff-Roof™ Low-Maintenance Roof System
- Valve Stem Extenders
- 4-Point Hydraulic Leveling System

OPTIONS

- Onan® 5.5kW MicroQuiet Generator w/2 A/C's & 50A service
- Roof Vent Rain Covers
- Dual Glazed Tinted Frameless Flush-Mounted Windows

BODY STRUCTURE

- Corrosion Resistant Aluminum Tube Hull Framing
- Powerframes™ Precision, Welded Aluminum Interlocking Frames
- Powerlock System™
- Radiused & Cambered Entry Door
- Radius Roof w/Ducted A/C
- Raised Space Frame Foundation
- Solid Bead-Foam Engineered Fit Insulation™
- Vacu-Bond™ Integrated Walls

SAFETY/CONVENIENCE

- 30 Amp, 30' Power Cord, Compartment Storage
- AC Duplex GFI Receptacle on Patio Side
- Amber Porch Light w/Interior Switch
- Automotive Safety Glass Windshield
- Entry Door w/Screen Door & Deadbolt Lock
- Compartment Storage
- Power Electric Step
- Rear Ladder

STORAGE

- Molded Cross Link Polyethylene Battery Compartment w/Lid
- Slam Latch Luggage Doors & Bus-Class Aluminum Luggage Doors

FLAIR LXE STANDARD & OPTIONS

INTERIOR THROUGHOUT

- 12V Water Pump, Demand Operation
- 15,000 Btu/h Ducted Air Conditioner w/Chill Grille
- 6 Gallon Propane Water Heater w/Electronic Ignition
- AC/DC Load Center w/12V Converter/Battery Charger
- Auxiliary Batteries w/Disconnect Switch
- Central Monitor Panel
- Dedicated Full-Length, Metallic A/C Ducting
- Deluxe Roller Bearing, Full Extension Drawer Guides & Transit-Ship Locks
- Flat Interior Ceiling
- GFI Circuit Protection
- Hardwood Flat Panel Cabinet Doors w/Euro Hinges
- Hide-A-Loft™ Drop Down Bed
- LED Interior Task Lighting
- Manual Night Shades in Living Room & Bedroom
- Ozite Lined Shelves in Overhead Cabinets
- Premium Constructed Furniture
- Soft-Touch Vinyl Ceiling w/Ducted Air
- Tuff-Pex™ Plumbing System
- Water Heater Bypass Valve
- Water Pump w/On/Off Switches at Lavy
- Whole-Coach Water Filtration System
- 1,200 Watt Inverter

OPTIONS

- CSA Package (Canadian Specs)**
- Satellite Radio (Subscription Required)
- King Stationary Satellite System
- 19" Bunk Area TV (31B)
- Dual Flat Panel Bunk Monitors (31B)

DRIVER CONVENIENCE

- (2) 12V Power Jack
- 3 Point Seat Belts at Driver & Front Passenger Seats
- Auxiliary Emergency Start Assist Switch on Dash
- Blind-Spot "Doggy" Window
- Cruise Control
- Driver/Passenger Reading Lights & Magazine Rack
- Driver/Front Passenger Soft-Touch Captain's Chairs w/Reclining Back/Slide Controls
- In-Dash AM/FM/Radio w/CD/DVD Player
- Power Windshield Privacy/Night Shade
- Radio Switch Main/Auxiliary Power
- Remote Heated Power Exterior Mirrors w/Turn Signals
- Side View Cameras
- Upgraded Rear Suspension & Sway Bar

OPTIONS

- Driver/Passenger Center Table

LIVING ROOM

- 32" LED Wide-Screen TV w/Remote & DVD Player
- 40" LED Wide-Screen TV w/Remote & DVD Player (31B Only)
- Dream Dinette Table w/2 Cup Holders - Convertible for Sleeping

GALLEY

- 3 Burner Range w/High Output/Piezo Igniter w/Cooktop Cover
- Ceiling - Power Vent Fan
- Dometic® 6 cu. ft. Refrigerator/Freezer
- Solid Surface Counter Top
- Convection Microwave Oven w/Electronic Touch Pad
- Residential Size Double Bowl Sink (N/A 30U)
- Single Bowl Sink (30U)
- Tile Backsplash

OPTIONS

- 3 Burner Range w/High Output/Piezo Igniter & Oven w/Cooktop Cover (30U)
- 11cf Residential Refrigerator

BEDROOM

- 24" LED TV
- Bedspread w/Decorative Pillows, & Headboard
- Queen Bed w/Mattress (31B, 31W)
- King Bed w/Mattress (30U)
- Reading Lights in Bed Overhead Cabinet

BATHROOM

- Bath Door w/Residential Passage Lock
- Dometic China Bowl Toilet w/Hand Sprayer
- Glass Shower Door
- Hand Towel Rack
- Large Sink w/Residential Style Faucet
- Medicine Cabinet w/Wood
- Molded ABS Shower w/Surround
- Shower Head w/Flexible Hose Extension
- Skylight/Roof Vent w/12V Fan
- Vacuum-formed Laminate Counter Tops

SAFETY/CONVENIENCE

- 10 lb. ABC Fire Extinguisher
- Auto-Gen Start
- Carbon Monoxide, Propane, Smoke Detector/Alarm
- Egress Window
- Exterior & Interior Entry Assist Handle
- Multiple Seatbelt Locations

EXTERIOR THROUGHOUT

- Aluminum Bus-Style Side Swing Luggage Doors
- Gelcoat w/Vinyl Graphics
- Dryseal™ Edge Coating (Water-Wicking Wall Edge Coating)
- Dual 6V Deep Cycle Auxiliary Batteries
- Exterior Entertainment Center
- Flexible Shower Hose & Faucet in Utility Compartment
- High Gloss Smooth Fiberglass Exterior
- Intense Halogen Projector Headlamps w/LED Accents
- Large 1" (Inside Diameter) Water Tank Drain
- Onan® 4.0kW MicroQuiet Generator
- Legless Power Awning w/LED Lighting
- Power Electric Step
- Rear Ladder
- Seamless Beltline Trim
- Radius Roof w/Ducted A/C
- Raised Space Frame Foundation
- Solid Bead-Foam Engineered Fit Insulation™
- Vacu-Bond™ Integrated Walls

BODY STRUCTURE

- Corrosion Resistant Aluminum Tube Hull Framing
- Powerframes™ Precision, Welded Aluminum Interlocking Frames
- Powerlock System™
- Radiused & Cambered Entry Door
- Radius Roof w/Ducted A/C
- Raised Space Frame Foundation
- Solid Bead-Foam Engineered Fit Insulation™
- Vacu-Bond™ Integrated Walls

SAFETY/CONVENIENCE

- 30 Amp, 30' Power Cord, Compartment Storage
- AC Duplex GFI Receptacle on Patio Side
- Amber Porch Light w/Interior Switch
- Automotive Safety Glass Windshield
- Entry Door w/Screen Door & Deadbolt Lock
- High Mounted LED Taillights
- Power Electric Step
- Rear Ladder

STORAGE

- Molded Cross Link Polyethylene Battery Compartment w/Lid
- Slam Latch Luggage Doors & Bus-Class Aluminum Luggage Doors

WEIGHTS & MEASUREMENTS

CHASSIS	FLAIR			FLAIR LXE		
	MODEL	30P	31A	31E	30U	31B
Wheelbase (inches)	190"	208"	208"	190"	208"	208"
GVWR (lbs) ¹	18,000	18,000	18,000	18,000	18,000	18,000
Front GAWR (lbs) ²	7,000	7,000	7,000	7,000	7,000	7,000
Rear GAWR (lbs) ²	12,000	12,000	12,000	12,000	12,000	12,000
GCWR (lbs) ³	23,000	23,000	23,000	23,000	23,000	23,000
Hitch Rating Weight (lbs) [†]	5,000	5,000	5,000	5,000	5,000	5,000
Tongue Weight (lbs) [†]	500	500	500	500	500	500
Fuel Capacity (gal)	80	80	80	80	80	80

FORD® CHASSIS

Model: Ford

Engine: 6.8L Triton V10

Transmission: Ford 6-Speed, Automatic w/Overdrive

Alternator: 175 Amp

Torque: 460 lb.-ft. @ 3,000 RPM

Horsepower: 320 HP @ 3,900 RPM

DIMENSIONS & CAPACITIES	FLAIR			FLAIR LXE		
	MODEL	30P	31A	31E	30U	31B
Overall Length (inches) ⁴	30' 11"	32' 9"	32' 9"	30' 11"	32' 9"	32' 9"
Overall Height (suspension inflated)	12'	12'	12'	12'	12'	12'
Overall Width (maximum) ^{5, 6}	102"	102"	102"	102"	102"	102"
Interior Height (maximum)	82"	82"	82"	82"	82"	82"
Interior Width (maximum)	96"	96"	96"	96"	96"	96"
Patio Awning Width	14'	16'	16'	14'	18'	18'
Interior Storage (cu. ft.)	140	134	108	140	108	134
Exterior Storage (cu. ft.)	104	156	156	104	156	156
Fresh Water Holding Tank (gal)	50	60	60	50	60	60
Grey Water Holding Tank (gal)	35	37	37	35	37	37
Black Water Holding Tank (gal)	35	37	37	35	37	37
Appliance Propane Tank (gal) (WC) ⁷	14	14	14	14	14	14
Water Heater Tank (gal)	6	6	6	6	6	6

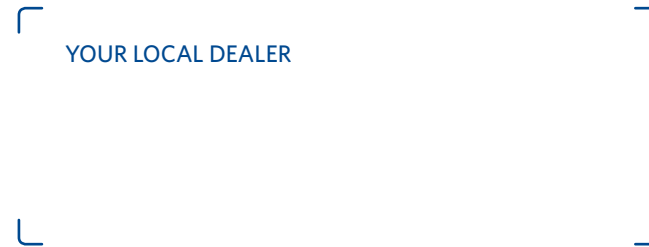
21 REASONS WHY FLEETWOOD IS AMERICA'S FAVORITE

Mile after mile, decade after decade, more families trust Fleetwood. The open road is our proof. With more Fleetwood motorhomes on the road today than any other manufacturer*, our brand prides itself on building dependable products that help families reconnect one journey at a time — over and over again. At Fleetwood, we constantly redefine value because understanding your every need is just the start to delivering peace-of-mind at every turn.

F-21 Advantage: Fleetwood 21st century engineering, manufacturing, and materials

Fleetwood RV offers a 21st century, industry-leading advantage—a quality construction approach to motorhome engineering, manufacturing and materials. The “F” stands for Fleetwood RV. The “21” stands for 21st century materials and construction techniques. F-21 is demonstrated by 21 key proof points that deliver unique advantages to Fleetwood owners and illustrate the quality for which Fleetwood RV is known industry-wide.

*Based on IHS Automotive, Polk Recreational Vehicles in Operation (RVIO) as of 7/1/13.



Fleetwood RV is part of REV Recreation Group, a division of REV Group, Inc., a family of 29 industry-leading motor vehicle brands. At REV Group, we innovate, design and build products that connect and protect thousands of people every day—our trusted vehicles are engineered with the utmost rigor and precision to deliver the highest levels of performance, reliability, durability and safety.

DISCLAIMERS

1. GVWR (Gross Vehicle Weight Rating) is the maximum permissible weight of this fully loaded motor home. The GVWR is equal to or greater than the sum of the (UVW) unloaded vehicle weight plus the (OCCC) occupant cargo-carrying capacity.
 2. GAWR (Gross Axle Weight Rating) is the maximum permissible loaded weight a specific axle is designed to carry.
 3. GCWR (Gross Combined Weight Rating) is the value specified by the motor home manufacturer as the maximum allowable loaded weight of this motor home with its towed vehicle. Towing and braking capacities may be different. Refer to Fleetwood and chassis manufacturer's manuals for complete information.
 4. Length measured from front bumper to rear bumper (excludes accessories).
 5. Excludes safety equipment and awnings.
 6. Motor homes feature a body width over 96" which will restrict your access to certain roads. Before purchasing, you should research any state and/or province road laws which may affect your usage.
 7. Tank manufacturer's listed water capacity (WC). Actual propane capacity is 80% of water listing as required by the safety code.
- † The chassis manufacturer recommends the installation of a supplemental brake control system to activate the brakes on the vehicle or trailer you are towing. Hitch receiver ratings expressed are maximum for the hitch receiver installed and may require the purchase of additional equipment that is dependent on the weight of the towed load. Consult with hitch receiver manufacturer for further information.
- * UVW and OCCC are found on the label containing the federal certification tag in each RV.
- ** Seatbelts and locations are shown in the brochure for display purposes only. Actual numbers and locations will vary by model.
- *** All 2018 REV Recreation Group motorhomes include a limited one year/15,000-mile coach warranty and three-year/45,000-mile structural warranty, whichever occurs first, and is fully transferable for the first 12 months.

FLEETWOOD MOTORHOME ASSOCIATION

As a Fleetwood RV owner, you're invited to become a member of the Fleetwood Motorhome Association (FMA). Becoming a member is the perfect way to meet other Fleetwood owners who love to travel across America and share in the RV lifestyle. Visit the FMA website at www.fma4fun.org to learn more and join the fun.

CONTACT US

To locate a dealer near you, visit our website at www.fleetwoodrv.com or call 1-800-322-8216. We can also be contacted at Fleetwood RV Customer Relations, P.O. Box 1007, Decatur, IN 46733.

IMPORTANT—PLEASE READ: Product information, photography and illustrations included in this publication were as accurate as possible at the time of printing. For further product information and changes, please visit our website at www.fleetwoodrv.com or contact your local Fleetwood RV dealer. Prices, materials, design and specifications are subject to change without notice. All weights, fuel, liquid capacities and dimensions are approximate. Fleetwood RV has designed its recreational vehicles to provide a variety of uses for its customers. Each vehicle features optimal seating, sleeping, storage and fluid capacities. The user is responsible for selecting the proper combination of loads (i.e., occupants, equipment, fluids, cargo, etc.) to ensure that the vehicle's capacities are not exceeded.

www.fleetwoodrv.com

©2017 REV Group, Inc. Printed in the USA. Inventory Control Number FLRFLRLXE18B1, 07/17. Model Year 2018, First Edition.